

## MAIDSTONE BOROUGH COUNCIL

### RECORD OF DECISION OF THE HEAD OF PLANNING

Decision Made: 27<sup>th</sup> November 2012

#### Neighbourhood Plan Area Application

##### **Issue for Decision**

To consider Lenham parish as a Neighbourhood Plan Area.

##### **Decision Made**

The neighbourhood area submitted by Lenham Parish Council to Maidstone Borough Council on 15<sup>th</sup> June 2012 is **approved**.

##### **Reasons for Decision**

##### Consultation

Consultation commenced on Monday 8<sup>th</sup> October 2012 and ended at 5pm on Tuesday 20<sup>th</sup> November 2012. The consultation was advertised as follows:

1. Leaflet distributed to all households in the parish at start of consultation
2. Neighbourhood Plan Area application (including a map) posted on Maidstone Borough Council's website and on Lenham Parish Council's website
3. Poster advertising the consultation on notice boards in the parish
4. News release to local papers
5. Parish meetings inviting comments on key issues in the parish and advertising the neighbourhood area application
6. Ward members and adjoining ward members were made aware of the consultation via email

##### Representations Received During Consultation

None

##### Considerations

1. Does the proposed plan area follow existing, established administrative or planning boundaries?

YES – the proposed plan area follows the existing parish boundary

2. Does it exclude areas which in planning terms it would be more appropriate to include (for example where planning designation or development location straddles a parish boundary)

NO

3. Does it overlap with another approved neighbourhood area (this is not permitted)

NO

#### Conclusion

Lenham Parish Council will be preparing the neighbourhood plan and are considered a relevant body<sup>1</sup> under the Localism Act 2011. The parish council intends the plan to cover the entire area it represents and as such has nominated the existing parish boundary to form the neighbourhood plan area.

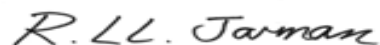
No representations were received during consultation and the proposed plan area (see map below) meets the criteria set out above. The plan area is considered acceptable in planning terms and the parish council has followed due process in line with the Neighbourhood Planning (General) Regulations, Part 2, S. 5(1).

#### **Alternatives considered and why rejected**

The decision to approve the neighbourhood plan area has been made for the reasons stated above. The alternative is to reject the application but the council is satisfied that due process has been followed and no representations were made during the consultation to suggest the geographic area of the parish should not form the Neighbourhood Plan Area.

#### **Background Papers**

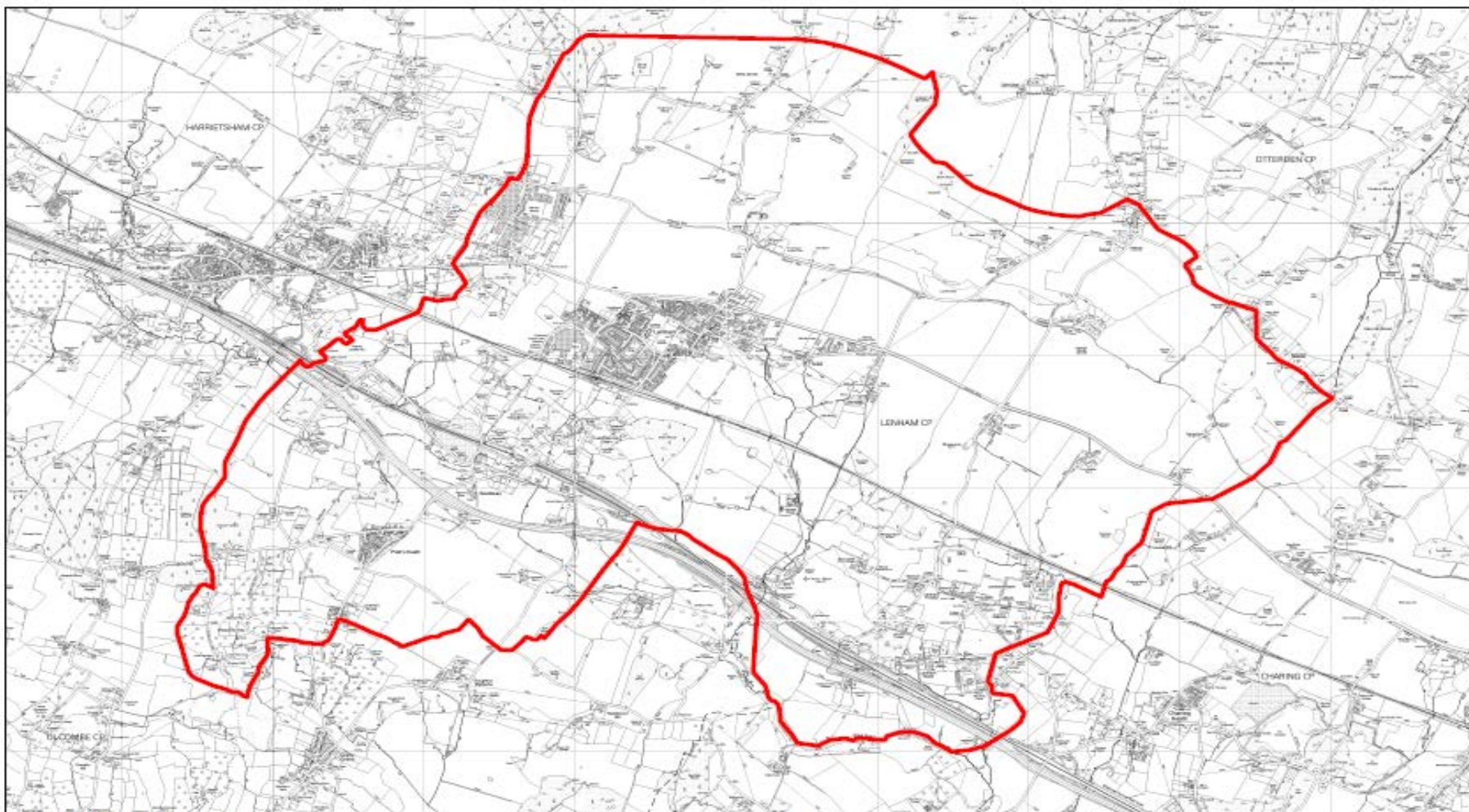
None



Signature: \_\_\_\_\_  
Rob Jarman, Head of Planning

---

<sup>1</sup> For the definition of “relevant body” see section 61G (2) of the 1990 Act (inserted by paragraph 2 of Schedule 9 to the Localism Act 2011 (c.20).



## LENHAM PARISH



Reproduced from the Ordnance Survey mapping with the permission of the Controller of Her Majesty's Stationary Office © Crown copyright  
Unauthorized reproduction infringes Crown copyright and may lead to prosecution or civil proceedings.  
The Maidstone Borough Council Licence No. 10019676, 2011. NOT TO SCALE