



## SPONSORING Our Events

Events include:	
Maidstone Mela	Annual multi-cultural event
Maidstone Museum	Special temporary exhibitions and events Education Programmes
Mote Park events	Corporate volunteering; family kite days; teddy bears picnic etc
Proms in the Park	
Christmas Lights	



Mela parade

01622 602608  
[advertising@maidstone.gov.uk](mailto:advertising@maidstone.gov.uk)



**LEGO® model of the Gallagher Stadium,  
home to Maidstone United FC, officially opened in 2012.**

The Stadium is one of over 60 models on display for 'Brick City', 4 July - 6 September.  
Tickets from reception.

Brick City is kindly sponsored by the Gallagher Group



## EXCLUSIVE headline sponsorship

### Exclusive headline sponsorship

**This is the highest level of sponsorship we offer, providing you maximum exposure. It involves a close association of your company at every stage of the event (before, during and after).**

#### What's included:

- Your logo on all event promotional material
- Inclusion in all press releases and social media messages
- Advert and web link to our website event page
- Park & Ride bus advert
- Prime location exhibition space
- Acknowledgement in the Council's newsletter
- Messages on the town's electronic information boards
- Opportunity to be at the heart of the event

- Signage and/or banners clearly identifying you as the main sponsor
- Acknowledgements at the event
- Photographs of the event
- Complementary refreshments
- Advice on how to maximise your opportunities



### Partner sponsorship

If you wish to be a partner sponsor, options include exhibition space, banners and/or signage

### Prices

Prices vary depending on your package. We can design your sponsorship artwork for a small additional cost. Please ask for details.

**01622 602608**  
**advertising@maidstone.gov.uk**

in 1395 by Archbishop...  
 Street to the river's edge.  
 Millennium River Park  
 occupies the site of a...  
 the main crossing point  
 on the opposite bank is  
 Maidstone Market (held  
 on) and The Stag. The 21st  
 century was erected in London  
 as part of the River Art  
 under the Dove of Peace  
 and alongside Maidstone's  
 path. Beyond the stone

**18 - Maidstone Bridge**  
 The first bridge to occupy this site was probably built in the 14th century to provide a more direct route to the commercial heart of the town than the ford located further upriver. One of a number of similar crossings constructed of local ragstone during medieval times at Aylesford, East Farleigh and Teston, the original bridge was finally declared unsafe in the 1870s. The current bridge was built in 1879 by Sir Joseph Bazalgette, the engineer responsible for the Thames Embankment and the London sewage system. *Walk under the bridge.*

**19 - Riverside**  
 The riverside was once a hive of industry. Local ragstone was shipped down the River Medway to build the Roman wall of the City of London, and later the Tower of London. After 1729 upriver navigation was enhanced to enable Maidstone to trade with the whole of the Weald. River traffic was still considerable in 1900, but as roads improved river transport went into terminal decline. Today, the River Medway is used for recreation and visitors can enjoy the beautiful scenery on board a river boat. *These turn right to cross through the underpass.*

**20 - Fairmeadow**  
 Fairmeadow became notorious during the persecution of Protestants by Queen Mary, when seven Protestant martyrs were burned at the stake here in June 1557. These executions may have accounted for the Puritan backlash in the town in succeeding decades. A tree-lined embankment was laid along the Medway in 1699 making Fairmeadow a fashionable place to stroll and providing one of the first public walks outside of London. *Turn left and walk forwards.*

**21 - Corpus Christi Hall**  
 This 14th century building was originally owned by the Corpus Christi Fraternity, a society of local tradesmen who regulated business, observed certain religious services and provided for elderly and infirm members. The Fraternity lasted until 1547 when it was seized by the crown during the suppression of religious guilds. The town then bought the hall and it served as Maidstone Grammar School from 1549-1871. The medieval hall is now leased to a private business. *Turn right up Earl Street.*

**22 - Earl Street**  
 The street (below) takes its name from Earl's Place, a major medieval town house with grounds that once occupied the whole area. A double-fronted town house (no. 31/33) was owned by Andrew Broughton, Mayor of Maidstone. Broughton was Clerk to the High Court and signed the death warrant of King Charles I in 1659. When the monarchy was restored in 1660, Broughton was charged with regicide. He fled and spent the rest of his life in exile in Geneva. *Turn left into Fremlin Walk.*

**23 - Fremlin Walk**  
 Fremlin Walk shopping centre (below) is built on the site of Fremlin brewery, owned by Ralph Fremlin, who by 1861 was Kent's largest brewer. Fremlin's connections in East India were symbolised by his trademark elephants and weathervane, examples of which will be on permanent display in the shopping centre.

Climb the steps under the arch and cross through the shopping centre and return to Maidstone Museum and Visitor Information.

**Maidstone Visitor Information  
 Maidstone Museum & Benthif Art Gallery**  
 St. Faith's Street  
 Maidstone  
 Kent  
 ME14 1LH  
 Tel: 01622 602169/ 602048  
 Web: www.visitmaidstone.com  
 Facebook: facebook.com/VisitMaidstone



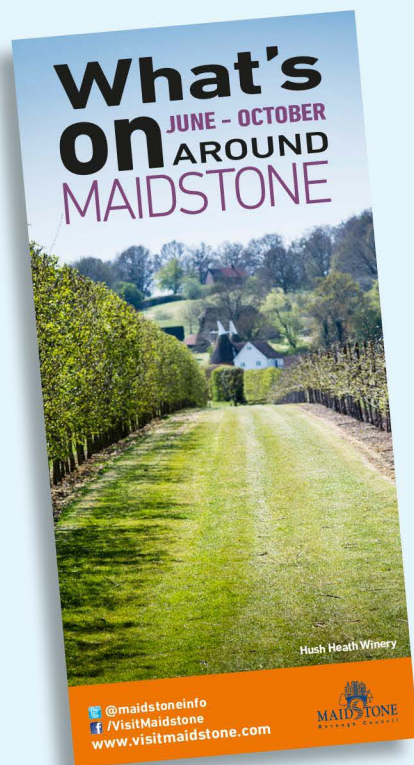
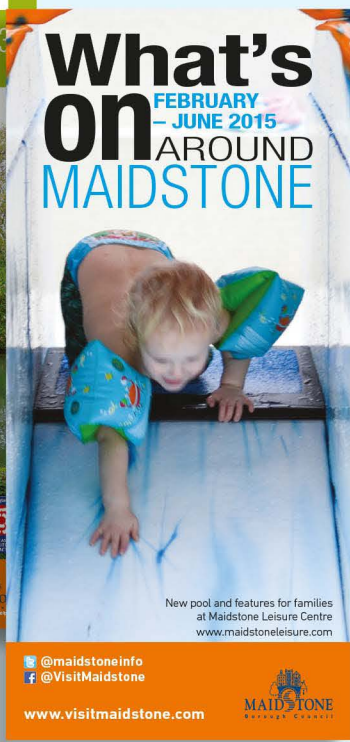
# ADVERTISE in our Publications

**Publications**

- Visit Maidstone pocket guide (annual)
- What's On, Maidstone (3 x per annum)
- What's On, Maidstone Museum (3 x per annum)

**Prices (excluding VAT)**

Covers	From £350
Full page advert	From £250
Half page advert	From £125
Sponsorship	From £400



We can also design your advert for a small additional cost. Please ask for details

**01622 602608**  
**advertising@maidstone.gov.uk**





## ADVERTISE on our Park & Ride Buses

### Inside the bus

12 wide internal panels positioned between the windows and roof.

Prices	
3 internal panels (1 for each bus)	Cost (exc. VAT)
1 month	£270
3 months	£480
6 months	£820
12 months	£1370

### Technical Specification

Each panel measures 1460mm wide x 200mm high

### On the back of the bus

Each bus has a large external panel on the back

Prices	
Number of exclusive bus panels	Cost per month (exc. VAT)
2 panels	£495
3 panels	£650



All prices include printing, installation and removal of your advert.

Time sensitive campaigns can be accommodated for 3, 6 and 12 month packages.

We can design your advert for a small additional cost. Please ask for details.



## In Our Parks and Open Spaces

Parks		
Arundel Street	Albert Reed Gardens	Barming Heath
Braunstone Drive	Bridge Mill Way	Brookbank
Clare Park	Corben Close	Cornwallis Park
Dickens Road	Foley Park	Giddyhorn Lane
Groewood Drive North	Mallards Way	Mangravet
Midley Close	Mote Park Adventure Zone	Mote Park Natural
Park Wood	Penenden Heath	Penshurst Close
Peverel Drive	Senacre Square	Shaw Close
South Park	Stevenswood	Upper Fulling Pits
Weaving Heath	Whatman Park Infant	Whatman Park Junior

Sports Parks		
South Park Skate Park	Mangravet Skate Park	Whatman Park Skate Park
Weaving Heath Trim Trail		





## In Our Parks and Open Spaces

Prices	
4 sites	Cost (exc. VAT)
3 months	£850 (£16 per unit / week)
6 months	£1,500 (£14 per unit / week)
12 months	£2,500 (£12 per unit / week)

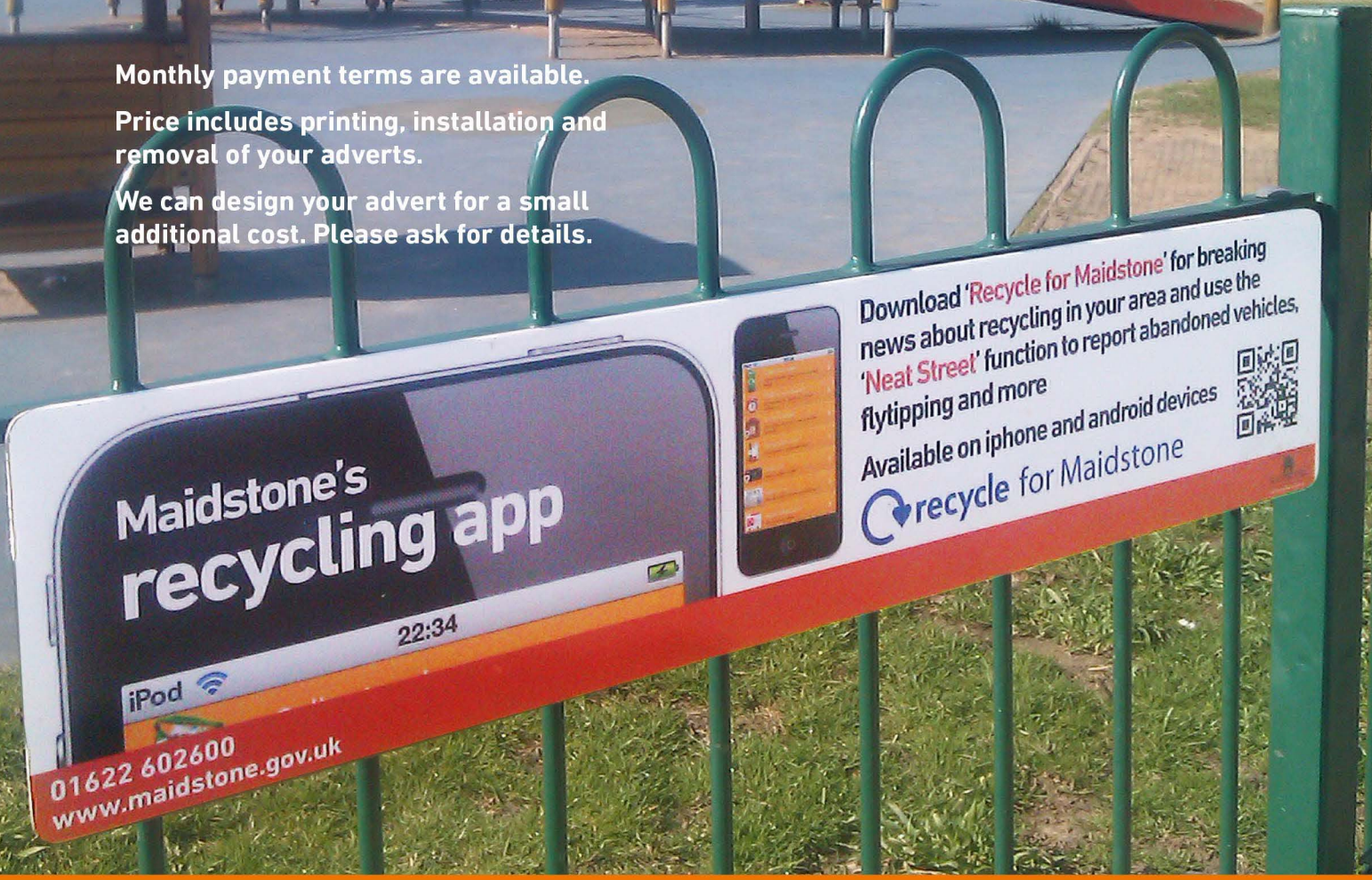
### Technical Specification

Each sign measures 900mm wide x 200mm high

Monthly payment terms are available.

Price includes printing, installation and removal of your adverts.

We can design your advert for a small additional cost. Please ask for details.



**Maidstone's recycling app**

22:34

iPod

01622 602600  
www.maidstone.gov.uk

Download 'Recycle for Maidstone' for breaking news about recycling in your area and use the 'Neat Street' function to report abandoned vehicles, flytipping and more

Available on iPhone and Android devices

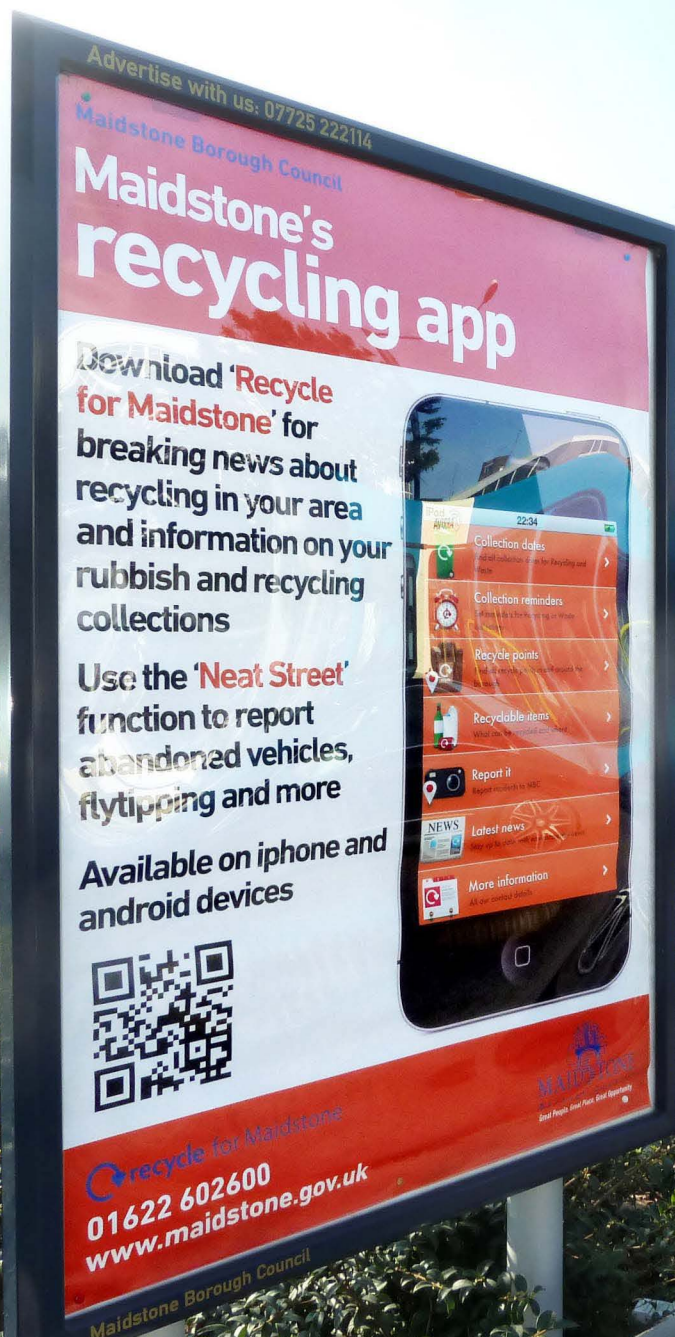
**recycle for Maidstone**



**01622 602608**  
**advertising@maidstone.gov.uk**



# ADVERTISE on our Poster Sites



## Available Packages

1	Sittingbourne Road	Medway Street
	Wheeler Street	Ashford Road
	Clare Park	Whatman Park

2	Mote Road	Barker Road
	Brewer Street East	Union Street
	Mote Park Pavilion	Mid Kent Shopping Centre

3	Mill Street	Lockmeadow Market Office
	Lucerne Street	Union Street East
	Mote Park Pavilion	Penenden Heath

4	Palace Avenue	Lock Meadow Market Hall
	Well Road	Brooks Place
	Brunswick Street	South Park



## ADVERTISE on our Poster Sites

Prices	
Per package (6 sites)	Cost (exc. VAT)
One month	£500
Two months	£700
Three months	£850
Monthly payment terms are available.	
Price includes printing, installation and removal of your adverts.	
Time sensitive campaigns can be accommodated for 3, 6 and 12 month packages.	
We can design your advert for a small additional cost. Please ask for details.	

### Technical Specification

Each poster site measures A0  
(1189mm high x 841mm wide)

