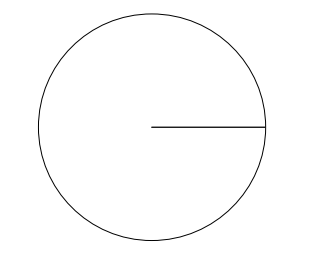




North Point



Notes

Scale

1 : 250@A0



Status

Planning  
Drawing Title

Proposed Development Plan

Client

Maidstone Borough Council

Date

December 2021

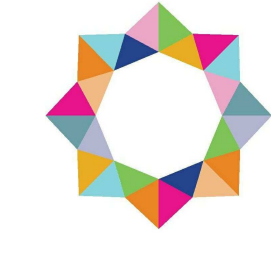
Project No

K190434

Drawing No- Revision

PL-04 Rev.1

Heather House, Maidstone ME15 9ZS



**calfordseaden**

calfordseaden.com

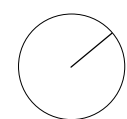




Community Hub - Area Schedule	
Name	Area
New Community Hub	580 m <sup>2</sup>
Extent of Canopy	60 m <sup>2</sup>

Community Hub - Room Schedule	
Name	Area
Extent of Canopy	60 m <sup>2</sup>
Changing Facilities 1	33 m <sup>2</sup>
Changing Facilities 2	33 m <sup>2</sup>
Changing Facilities 3	33 m <sup>2</sup>
Changing Facilities 4	33 m <sup>2</sup>
Ref Changing	17 m <sup>2</sup>
Circulation	33 m <sup>2</sup>
Communal Lounge	49 m <sup>2</sup>
Entrance Area	21 m <sup>2</sup>
Bar	9 m <sup>2</sup>
Kitchen	14 m <sup>2</sup>
Managers Office	11 m <sup>2</sup>
Changing Places	12 m <sup>2</sup>
WC-F	12 m <sup>2</sup>
WC-M	12 m <sup>2</sup>
Plant Room	8 m <sup>2</sup>
One Court Sports Hall	180 m <sup>2</sup>
Hall Storage 1	25 m <sup>2</sup>
Hall Storage 2	14 m <sup>2</sup>
Rugby Storage	9 m <sup>2</sup>
St.	1 m <sup>2</sup>
St.	2 m <sup>2</sup>
St.	1 m <sup>2</sup>
<b>Total</b>	<b>622 m<sup>2</sup></b>

**Ground Layout**  
1 : 100







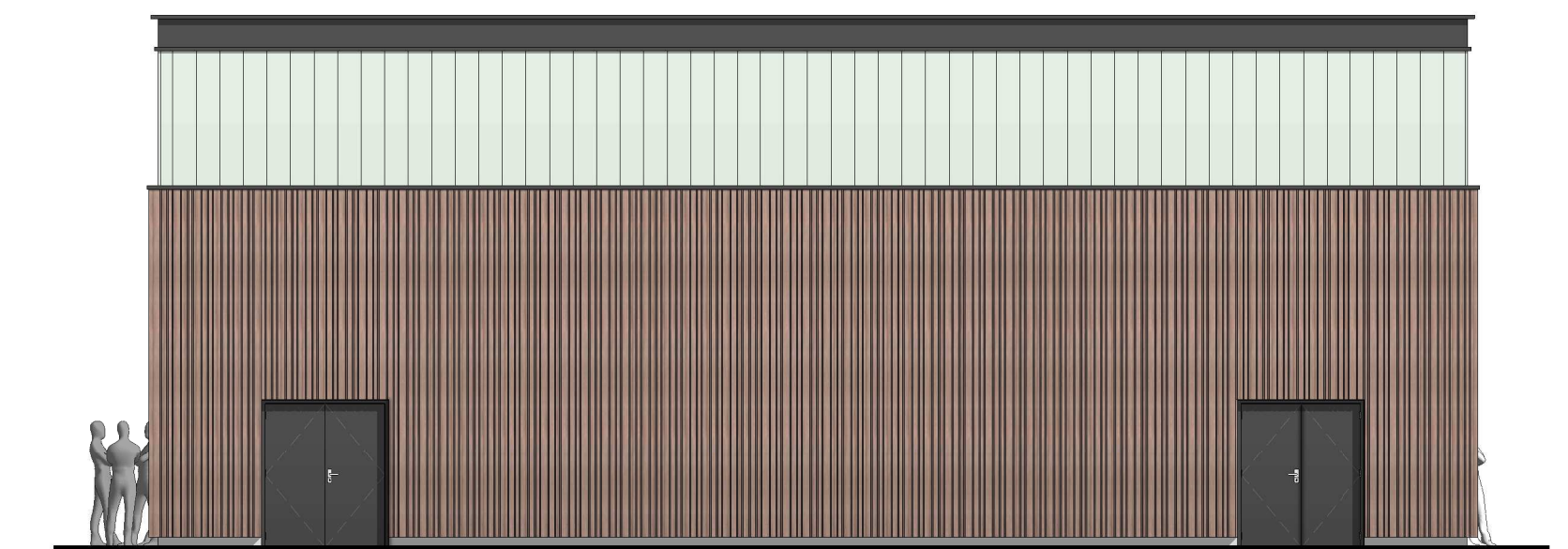
**Front Elevation**  
1 : 100



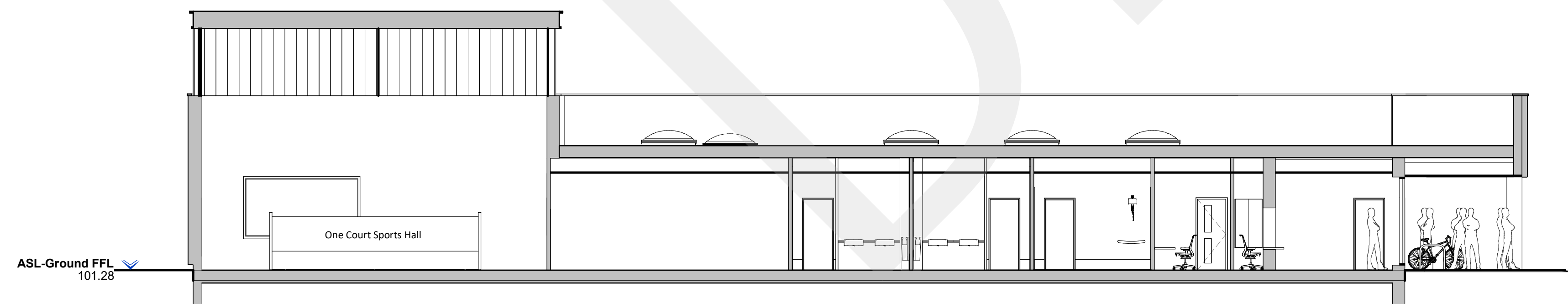
**Right Elevation**  
1 : 100



**Rear Elevation**  
1 : 100

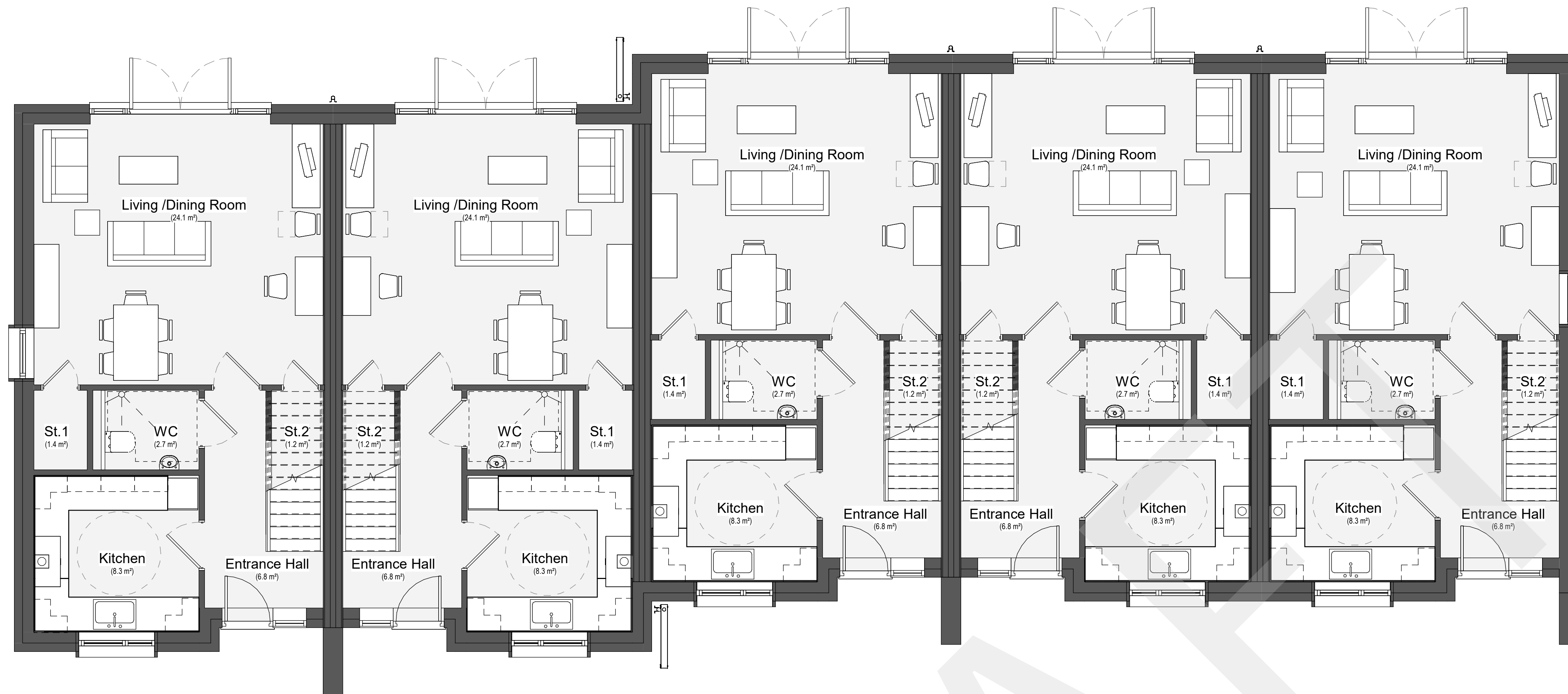


**Left Elevation**  
1 : 100



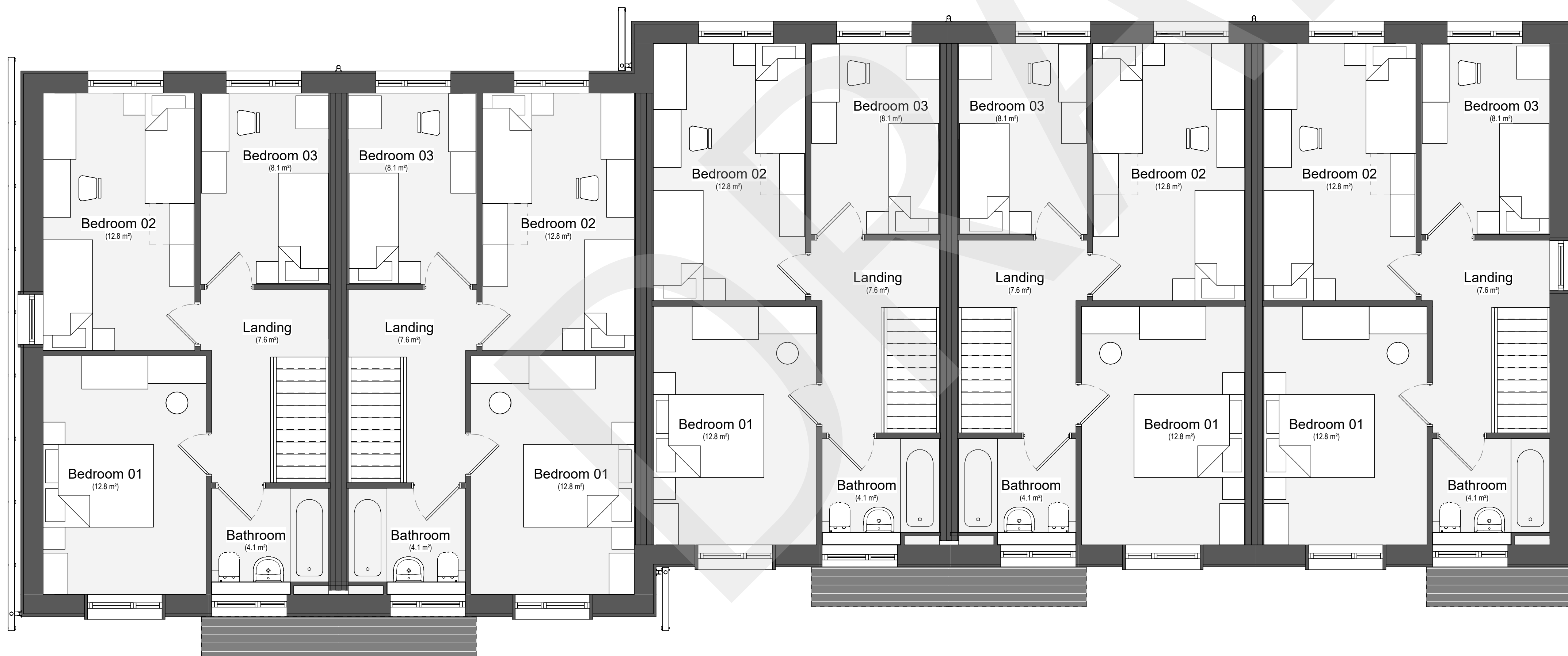
**Section 1-1**  
1 : 100





**GROUND FLOOR**

1 : 50



**FIRST FLOOR**

1 : 50

House Type 01 - Area Schedule	
Name	Area

Ground Floor	46 m <sup>2</sup>
First Floor	47 m <sup>2</sup>
	93 m <sup>2</sup>

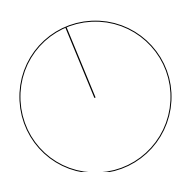
House Type 01 - Room Schedule	
Name	Area

Entrance Hall	7 m <sup>2</sup>
Kitchen	8 m <sup>2</sup>
Living /Dining Room	24 m <sup>2</sup>
St.1	1 m <sup>2</sup>
St.2	1 m <sup>2</sup>
WC	3 m <sup>2</sup>
0	44 m <sup>2</sup>

Bathroom	4 m <sup>2</sup>
Bedroom 01	13 m <sup>2</sup>
Bedroom 02	13 m <sup>2</sup>
Bedroom 03	8 m <sup>2</sup>
Landing	8 m <sup>2</sup>
1	45 m <sup>2</sup>
	90 m <sup>2</sup>



North Point



Notes

Scale

1 : 50@A1



Status

Planning

Drawing Title

Proposed Plots 1-5 Plans

Client

Maidstone Borough Council

Date

December 2021

Project No

K190434

Drawing No - Revision

PL-07 Rev.1

Heather House, Maidstone ME15 9ZS





**Front Elevation**  
1 : 100



**Left**  
1 : 100



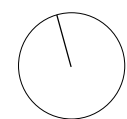
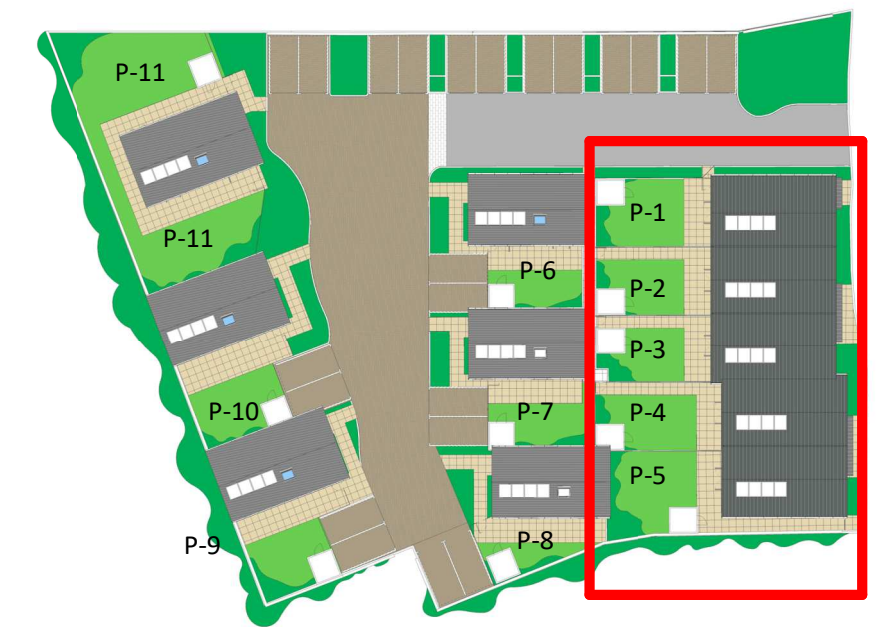
**Rear Elevation**  
1 : 100



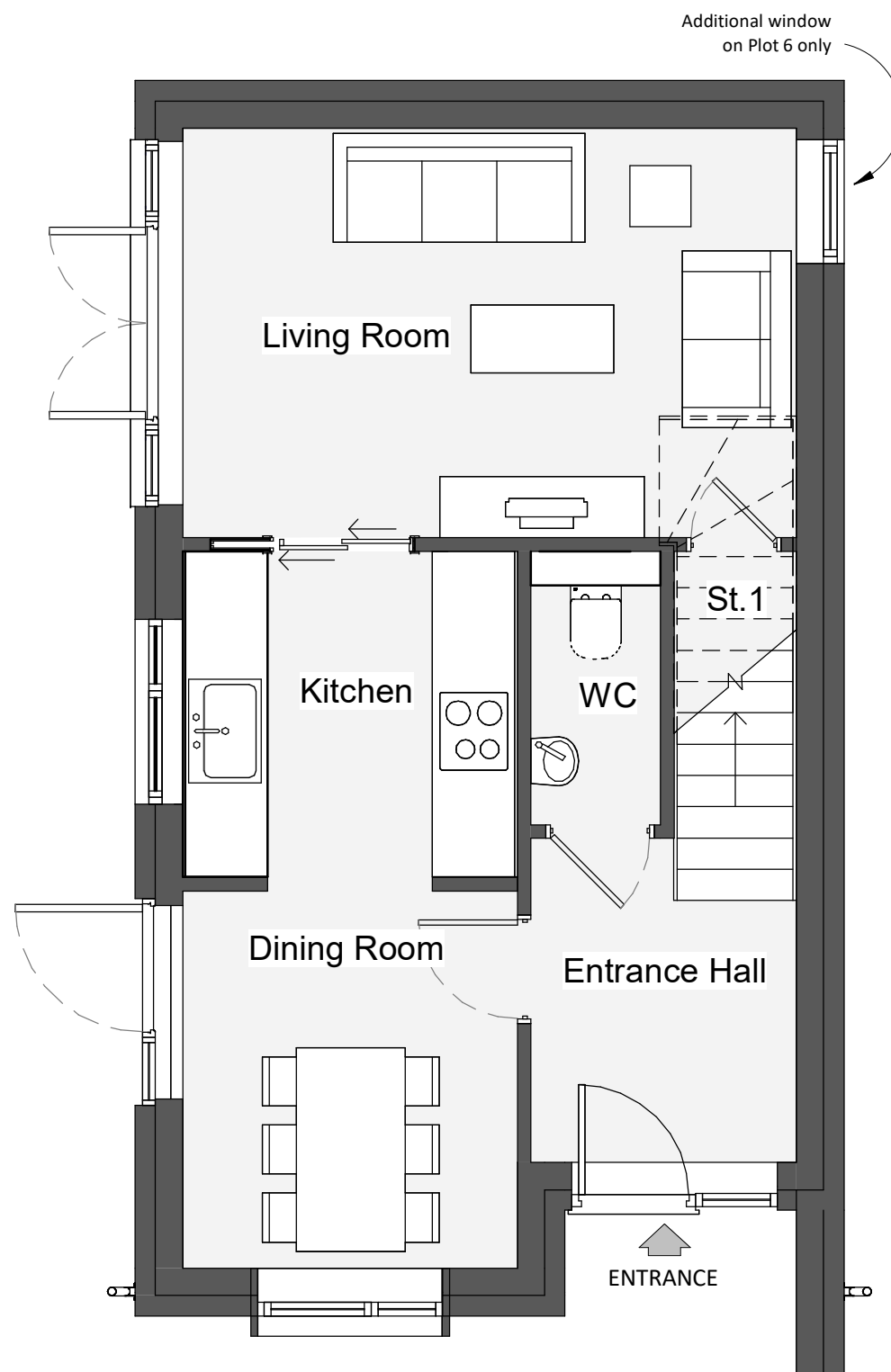
**Right**  
1 : 100



**Section 1**  
1 : 100

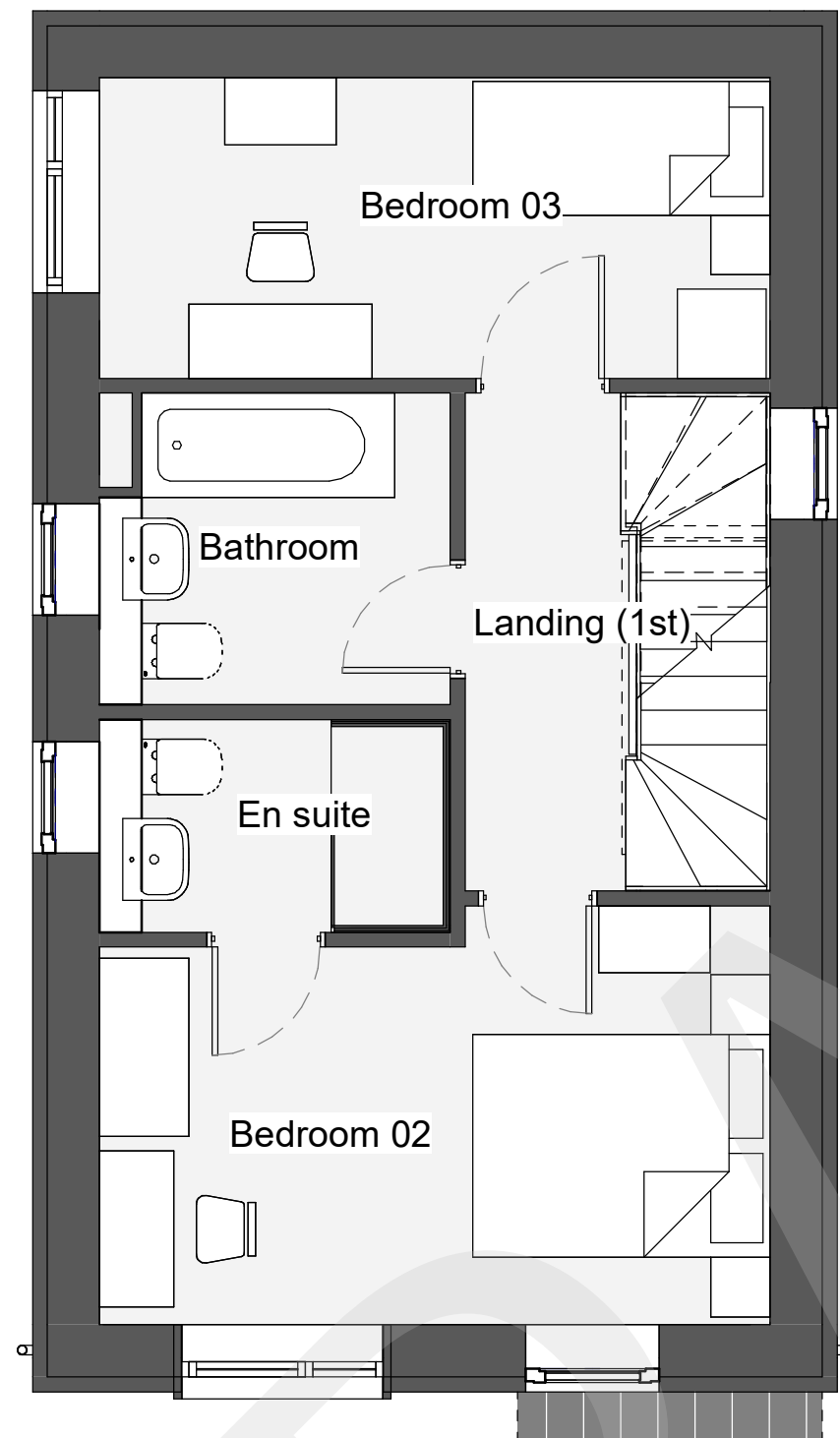






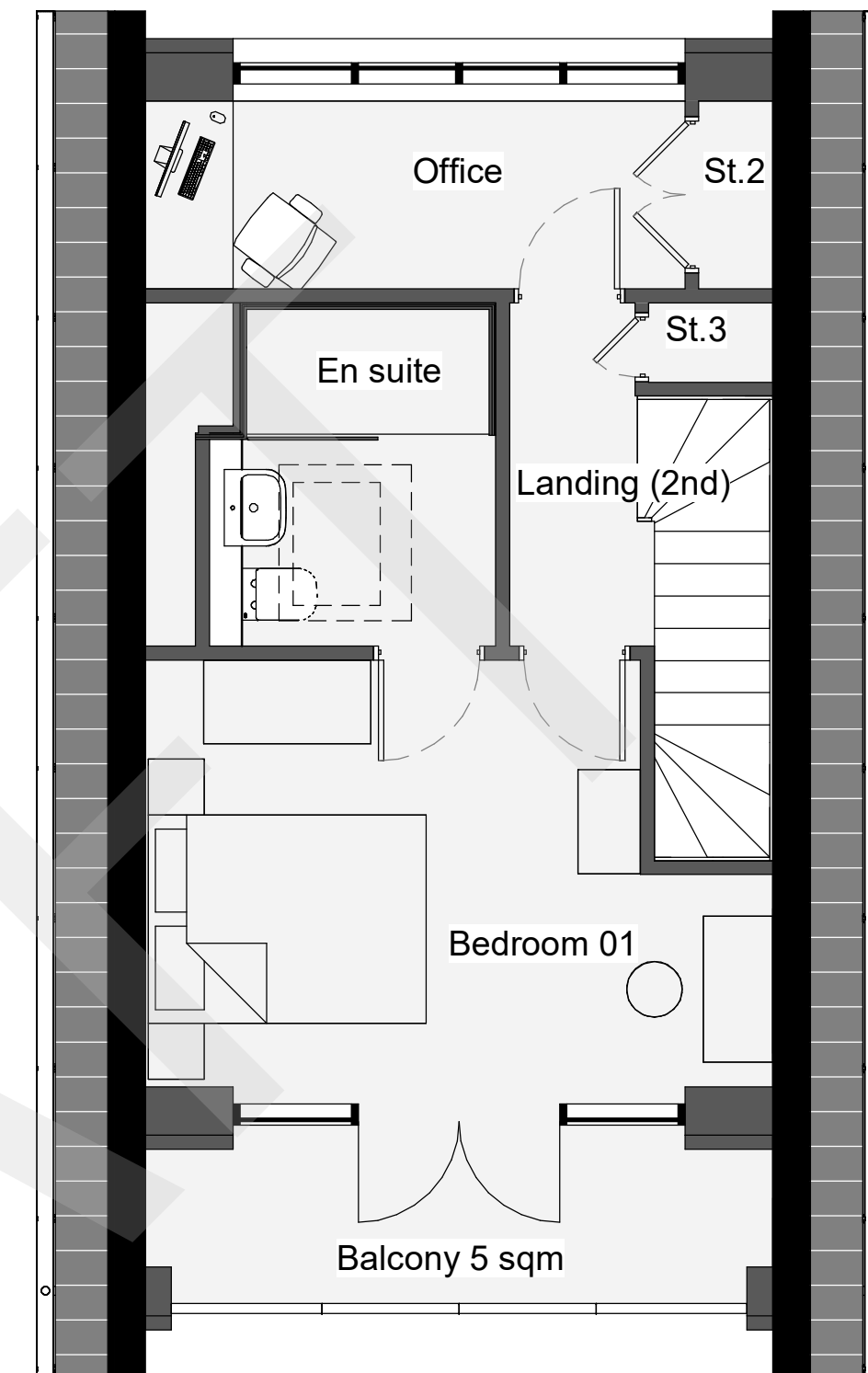
**GROUND FLOOR**

1 : 50



**FIRST FLOOR**

1 : 50



**SECOND FLOOR**

1 : 50

House Type 02 - Area Schedule GIA	
Name	Area

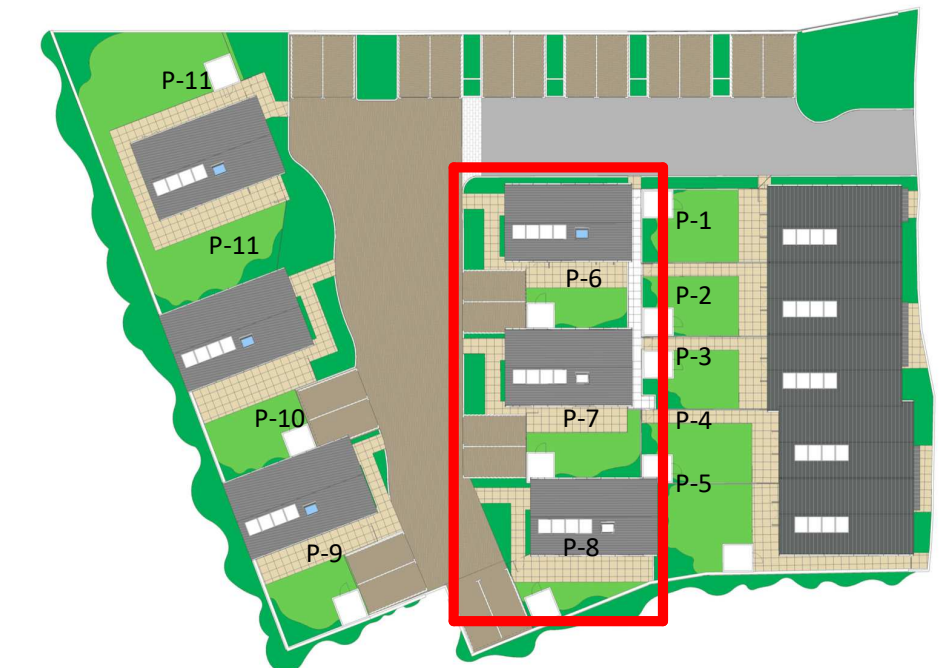
Ground Floor	36 m <sup>2</sup>
First Floor	38 m <sup>2</sup>
Second Floor	28 m <sup>2</sup>
	102 m <sup>2</sup>

House Type 02 - Room Schedule	
Name	Area

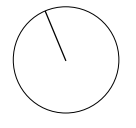
Dining Room	7 m <sup>2</sup>
Entrance Hall	6 m <sup>2</sup>
Kitchen	6 m <sup>2</sup>
Living Room	14 m <sup>2</sup>
St.1	1 m <sup>2</sup>
WC	2 m <sup>2</sup>
0	35 m <sup>2</sup>

Bathroom	5 m <sup>2</sup>
Bedroom 02	12 m <sup>2</sup>
Bedroom 03	9 m <sup>2</sup>
En suite	3 m <sup>2</sup>
Landing (1st)	7 m <sup>2</sup>
1	36 m <sup>2</sup>

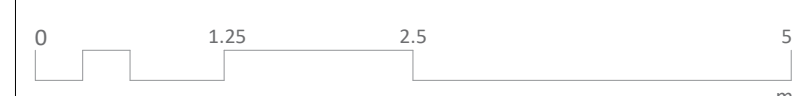
Bedroom 01	13 m <sup>2</sup>
En suite	5 m <sup>2</sup>
Landing (2nd)	2 m <sup>2</sup>
Office	5 m <sup>2</sup>
St.2	1 m <sup>2</sup>
St.3	1 m <sup>2</sup>
2	27 m <sup>2</sup>
	98 m <sup>2</sup>



North Point



Notes



Scale

1 : 50@A2

Status

Planning  
Drawing Title

Proposed Plots 6-8 Plans

Client

Maidstone Borough Council

Date

December 2021

Project No

K190434

Drawing No - Revision

PL-09 Rev.1

Heather House, Maidstone ME15 9ZS







**Front Elevation**

1 : 100



**Left Elevation**

1 : 100

PV Panels

Rooflight

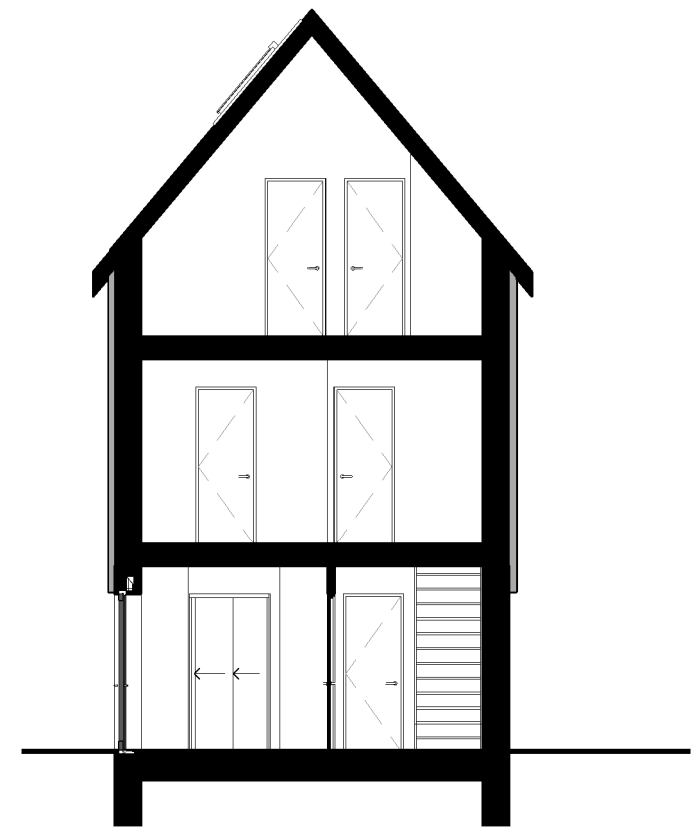
Standing Seam roof

Horizontal man made Weatherboarding (timber grain)

Composite Aluminium Double glazed Window & Doors (Anthracite grey)

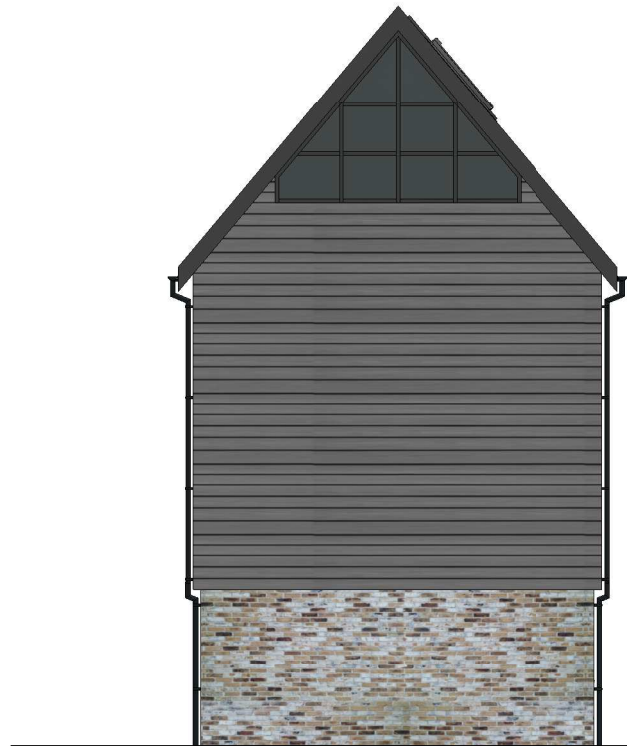
Standing Seam canopy

Contemporary Brickwork (Grey/White)



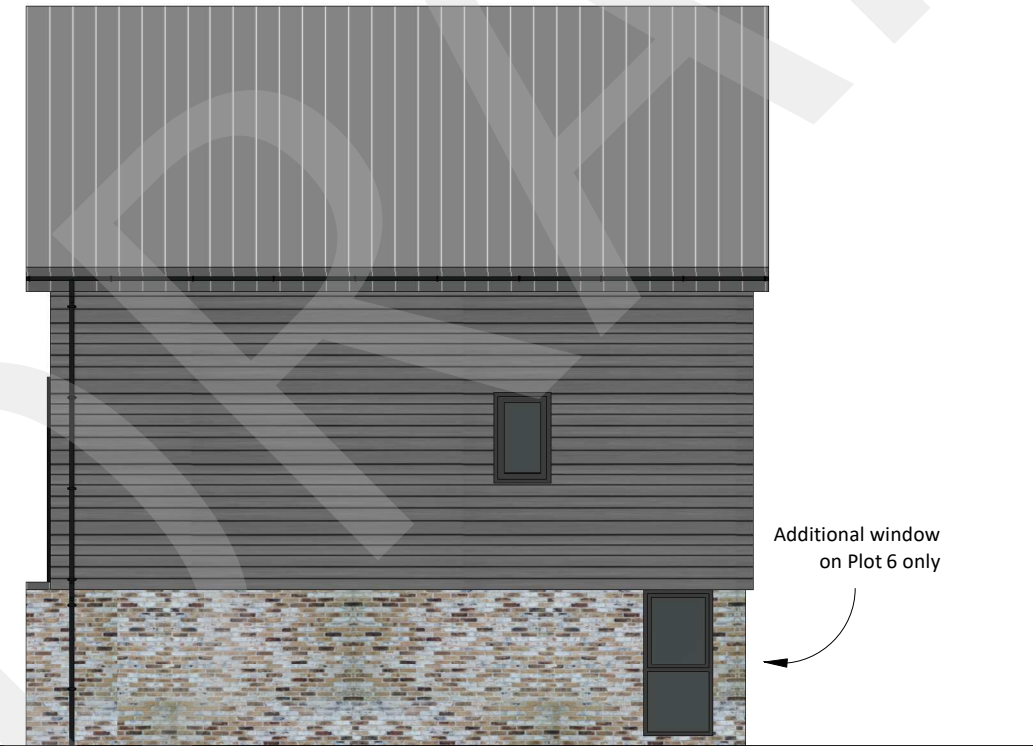
**Section A-A**

1 : 100



**Rear Elevation**

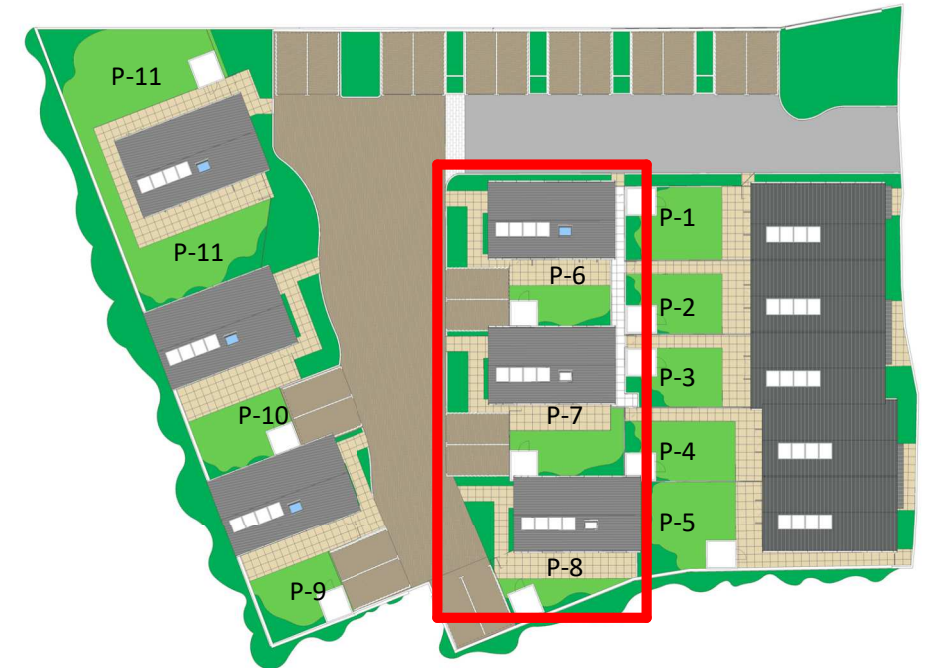
1 : 100



**Right Elevation**

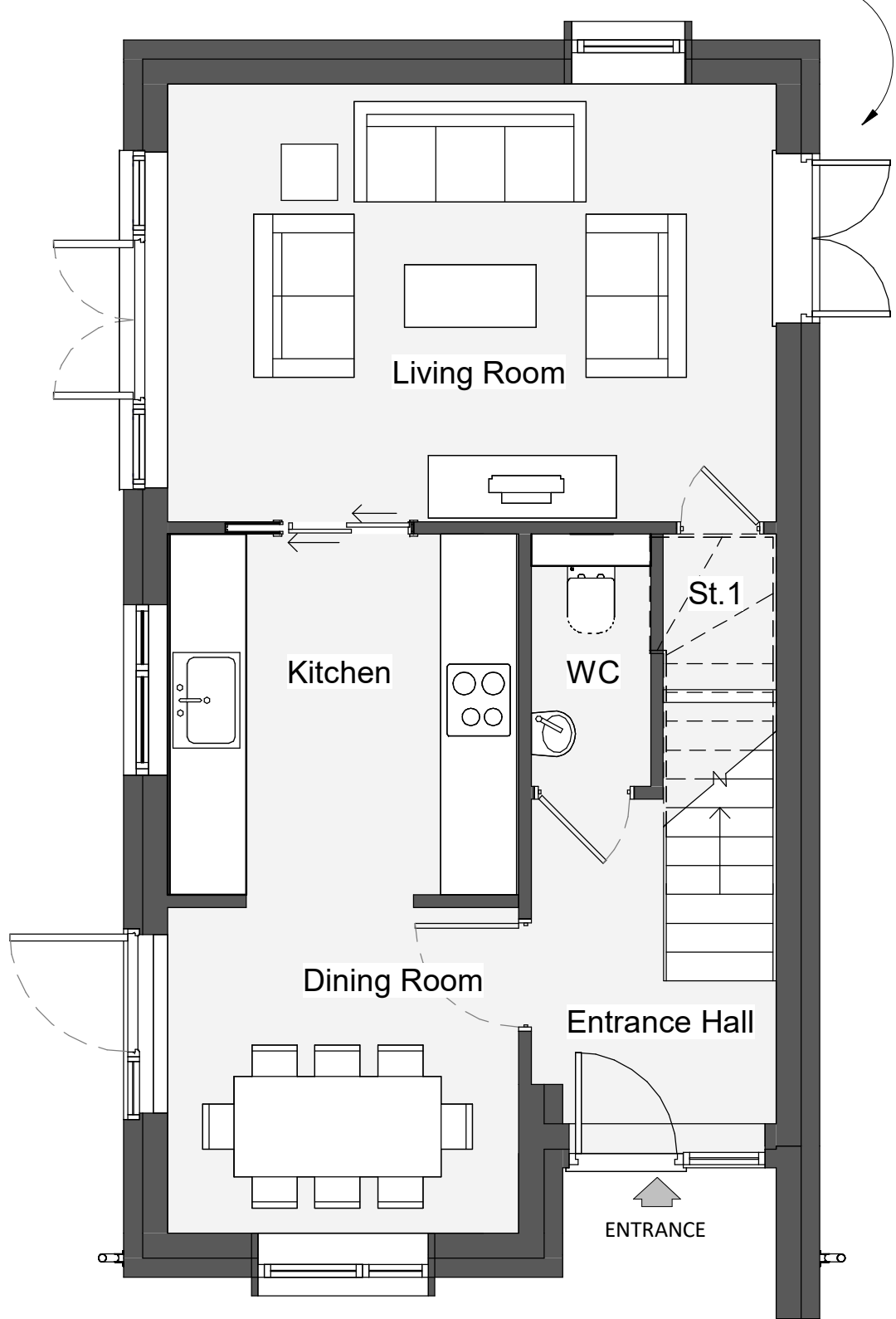
1 : 100

Additional window on Plot 6 only

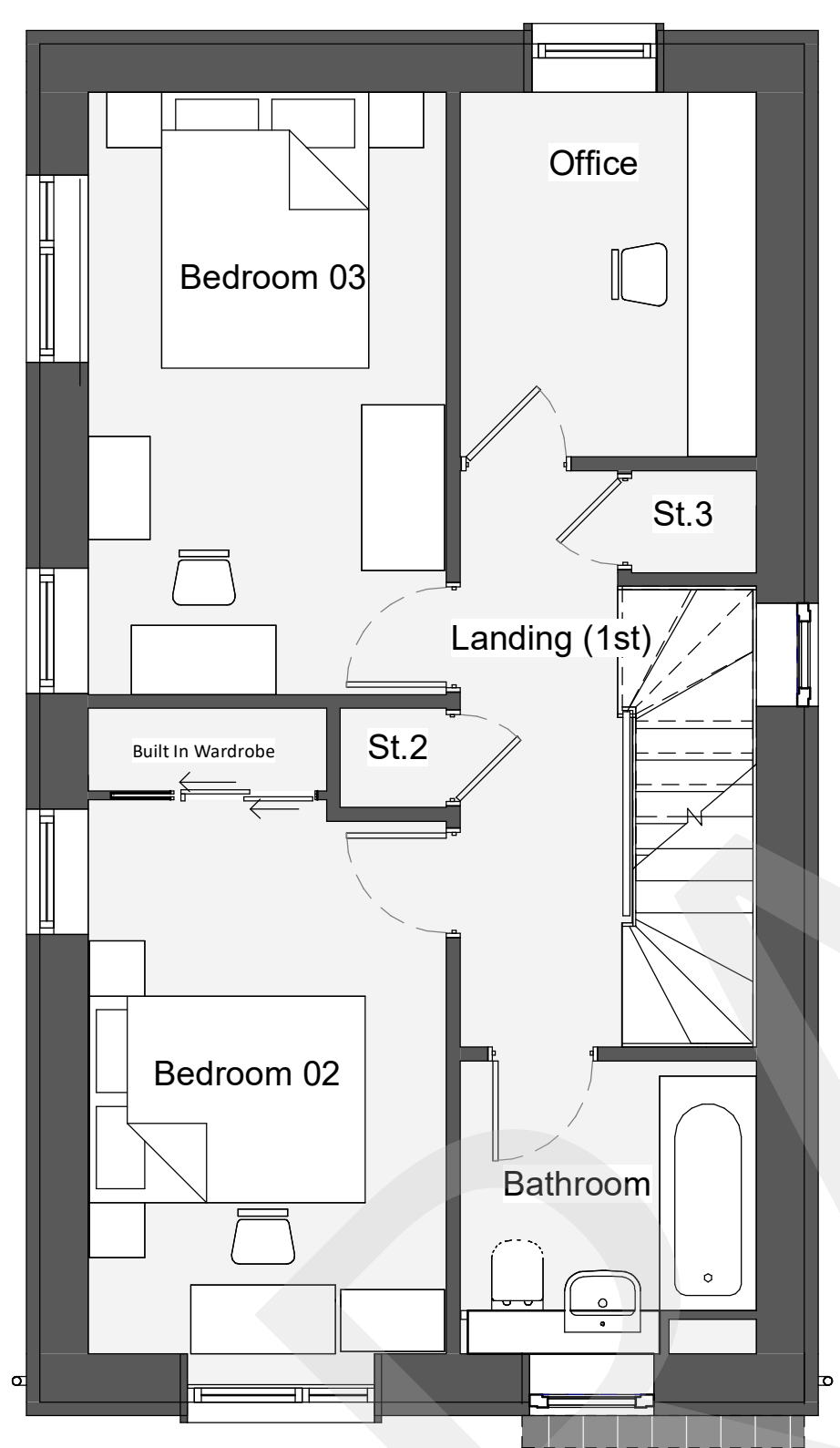




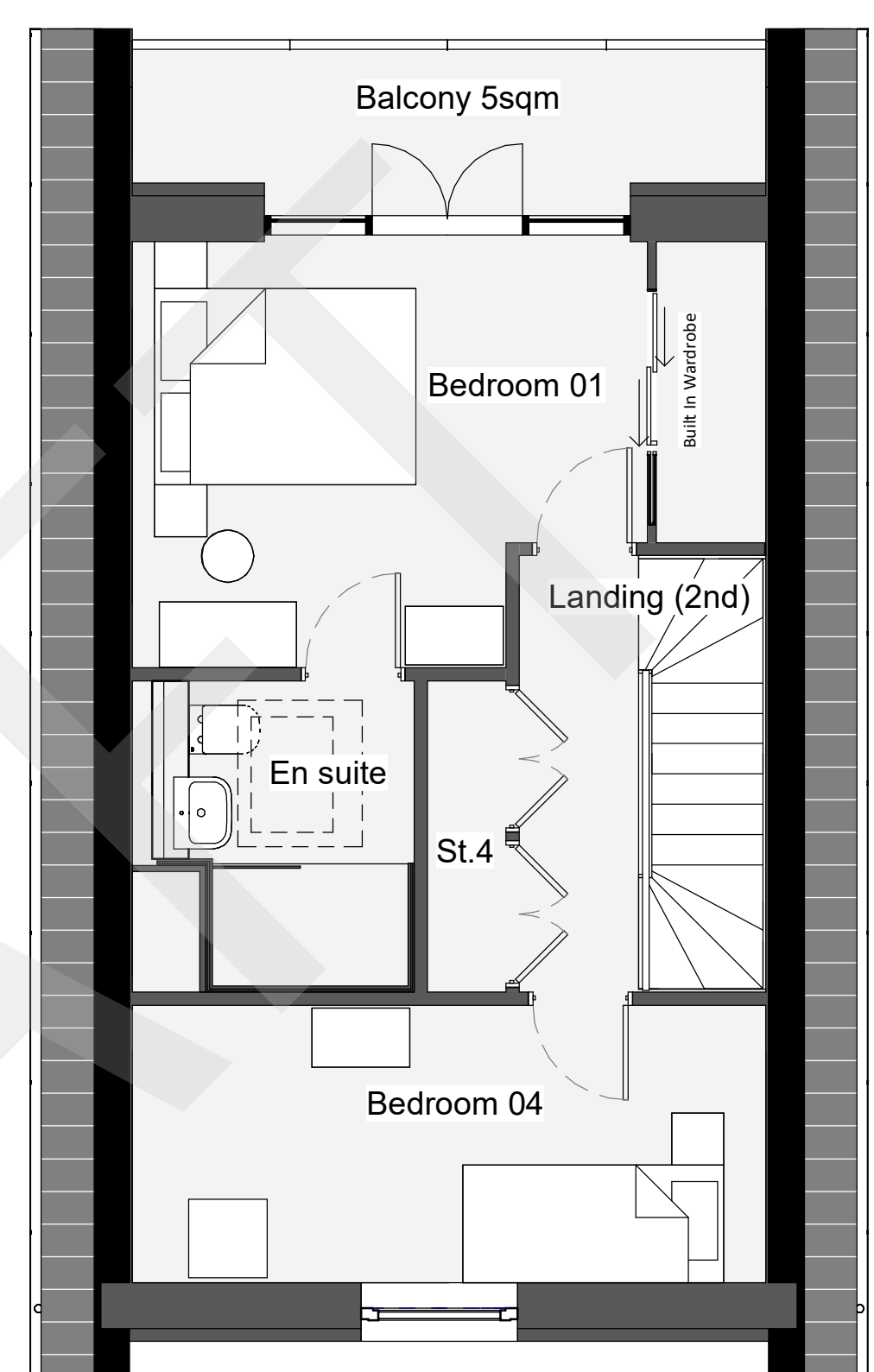
Additional doors  
on Plot 11 only  
(Dual aspect garden)



**GROUND FLOOR**  
1 : 50



**FIRST FLOOR**  
1 : 50



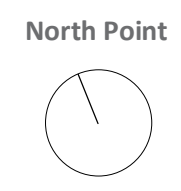
**SECOND FLOOR**  
1 : 50

House Type 04 - Area Schedule	
Name	Area
Ground Floor	43 m <sup>2</sup>
First Floor	44 m <sup>2</sup>
Second Floor	34 m <sup>2</sup>
	121 m <sup>2</sup>

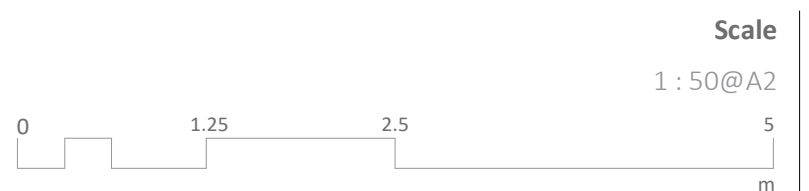
House Type 04 - Room Schedule	
Name	Area
Dining Room	7 m <sup>2</sup>
Entrance Hall	6 m <sup>2</sup>
Kitchen	8 m <sup>2</sup>
Living Room	17 m <sup>2</sup>
St.1	1 m <sup>2</sup>
WC	2 m <sup>2</sup>
0	41 m <sup>2</sup>

Bathroom	4 m <sup>2</sup>
Bedroom 02	11 m <sup>2</sup>
Bedroom 03	11 m <sup>2</sup>
Landing (1st)	8 m <sup>2</sup>
Office	6 m <sup>2</sup>
St.2	1 m <sup>2</sup>
St.3	1 m <sup>2</sup>
1	42 m <sup>2</sup>

Bedroom 01	13 m <sup>2</sup>
Bedroom 04	9 m <sup>2</sup>
En suite	4 m <sup>2</sup>
Landing (2nd)	5 m <sup>2</sup>
St.4	1 m <sup>2</sup>
2	33 m <sup>2</sup>
	116 m <sup>2</sup>



Notes



Status  
Planning  
Drawing Title  
Proposed Plots 9-11 Plans

Client  
Maidstone Borough Council  
Date  
December 2021

Project No  
K190434  
Drawing No - Revision  
PL-11 Rev.1

Heather House, Maidstone ME15 9ZS







**Front Elevation**

1 : 100



**Left Elevation**

1 : 100

PV Panels

Rooflight

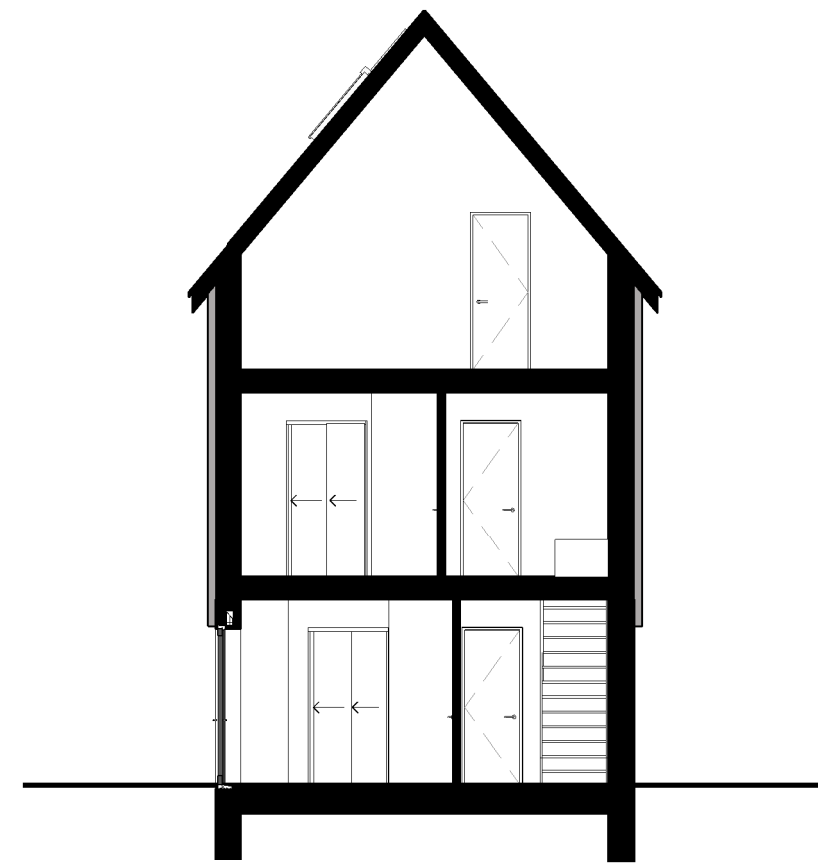
Standing Seam Roof

Horizontal man made  
Weatherboarding (timber grain)

Composite Double glazed  
Window & Doors (Anthracite grey)

Standing Seam canopy

Contemporary Brickwork  
(Grey/White)



**Section A-A**

1 : 100



**Rear Elevation**

1 : 100



**Right Elevation**

1 : 100

Additional doors  
on Plot 11 only  
(Dual aspect garden)



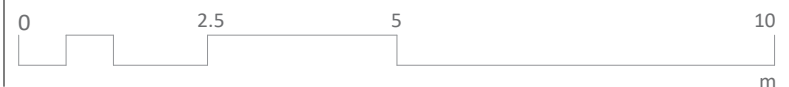
North Point



Notes

Scale

1 : 100@A3



Status

Planning

Drawing Title

Proposed Elevations

Client

Maidstone Borough Council

Date

December 2021

Project No

K190434

Drawing No - Revision

PL-12 Rev.1

Heather House, Maidstone  
ME15 9ZS

 calfordseaden  
calfordseaden.com





**NEW COMMUNITY CENTRE**  
580sqm

EXISTING  
HEATHER HOUSE  
FOOTPRINT

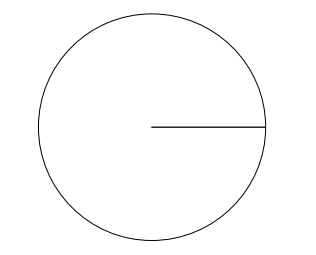
SKATE PARK

To be read in conjunction with  
Landscape Masterplan Drawing - TD955\_02  
+ Arboricultural Report - BS-5837

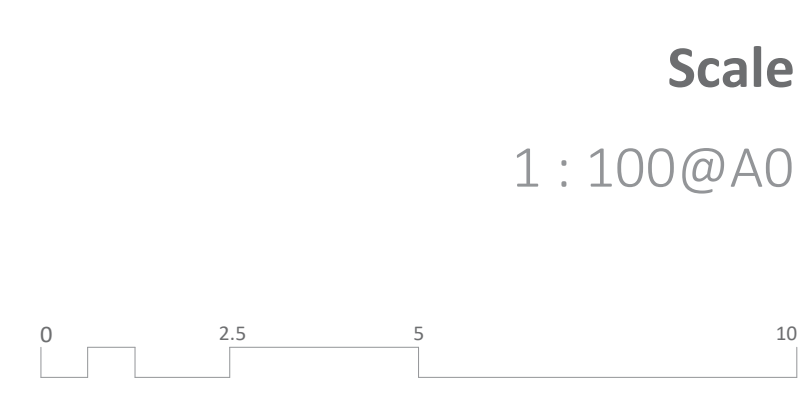
SENIOR PLAY AREA

Turning Circle - Coach / Minibus / Refuse / Emergency Vehicles

North Point



Notes



Status

Planning  
Drawing Title

Proposed Community Centre Site

Client

Maidstone Borough Council

Date

December 2021

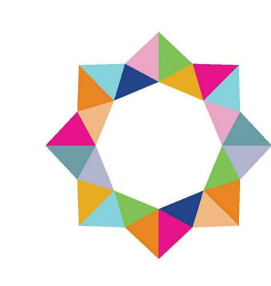
Project No

K190434

Drawing No- Revision

PL-13 Rev.1

Heather House, Maidstone ME15 9ZS



**calfordseaden**

calfordseaden.com

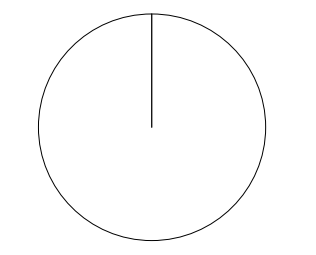


To be read in conjunction with  
Landscape Masterplan  
Drawing - TD955\_01



**NEW RESIDENTIAL DEVELOPMENT**

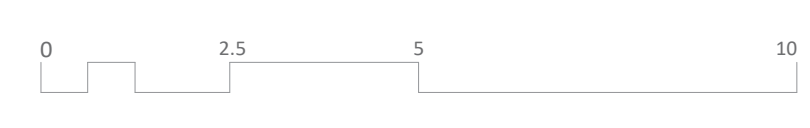
North Point



Notes

Scale

1 : 100@A0



Status

Planning

Drawing Title

Proposed Residential Site

Client

Maidstone Borough Council

Date

December 2021

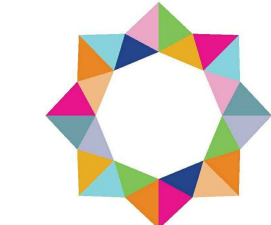
Project No

K190434

Drawing No- Revision

PL-14 Rev.1

Heather House, Maidstone ME15 9ZS



**calfordseaden**

calfordseaden.com