

PROJECT

Maidstone Local Cycling and Walking Infrastructure Plan

CLIENT

Maidstone Borough Council

CONSULTANT

AECOM Limited
Marlborough Court
10 Bricket Road
St Albans, AL1 3JX, UK
T +44-1727-53-5000
www.aecom.com

LEGEND

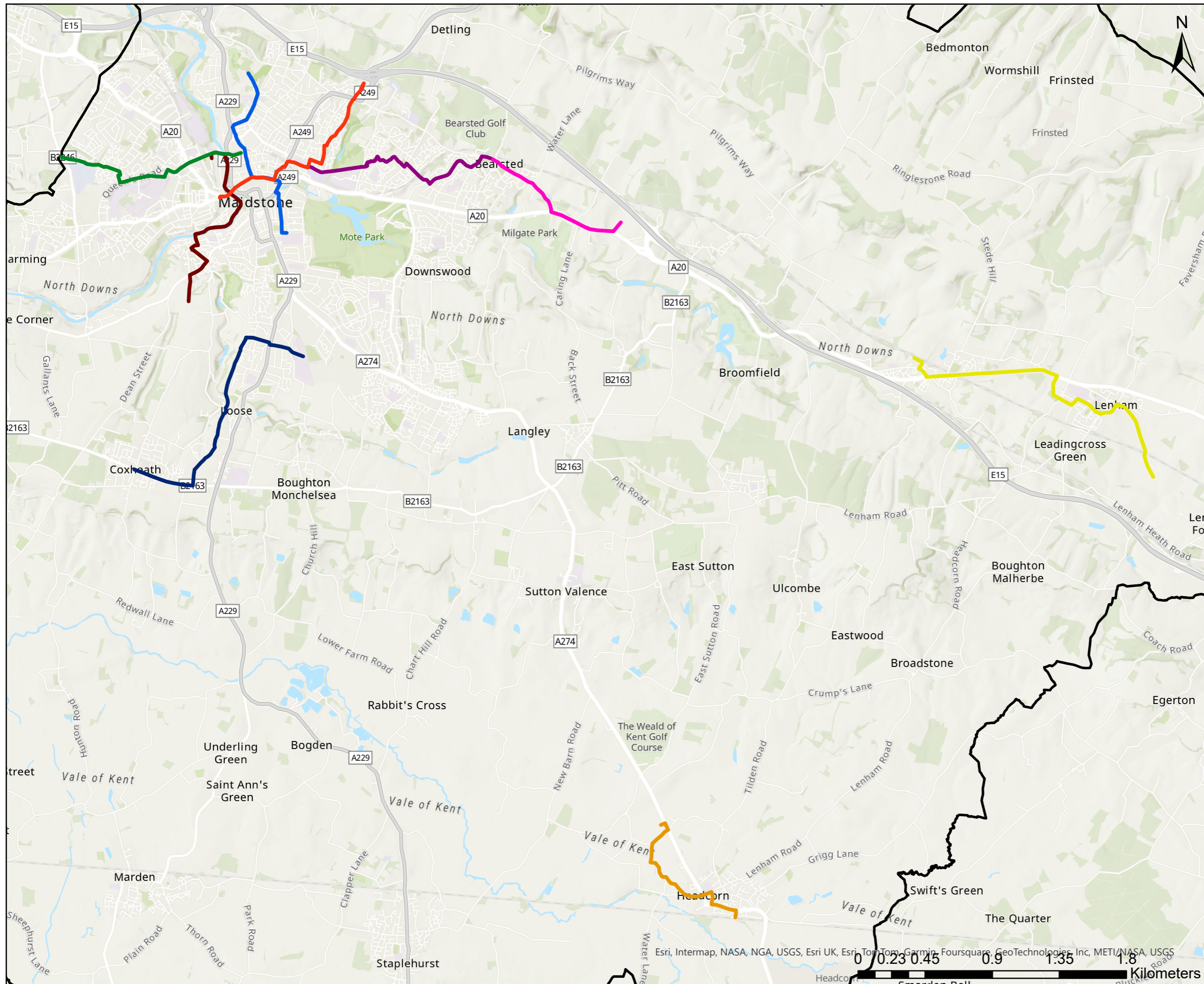
-  Route 1 - Barming to Maidstone East
-  Route 2 - Bearsted to Maidstone West
-  Route 3 - Invicta Park to Maidstone Grammar School
-  Route 4 - Weaving to Bearsted
-  Route 5 - Bearsted Employment Site to Station
-  Route 6 - Harrietsham to Lenham
-  Route 7 - Headcorn Town Centre
-  Route 8 - Coxheath to Shepway
-  Route 9 - Tovil to Maidstone Barracks
-  Maidstone Boundary

NOTES

1: [Contains OS data © Crown copyright and database right 2022]

ISSUE PURPOSE

FINAL



This drawing has been prepared for the use of AECOM's client. It may not be used, modified, reproduced or relied upon by third parties, except as agreed by AECOM or as required by law. AECOM accepts no responsibility, and denies any liability whatsoever, to any party that uses or relies on this drawing without AECOM's express written consent. All measurements must be obtained from the stated dimensions.