

PROJECT

Maidstone Local Cycling and Walking Infrastructure Plan

CLIENT

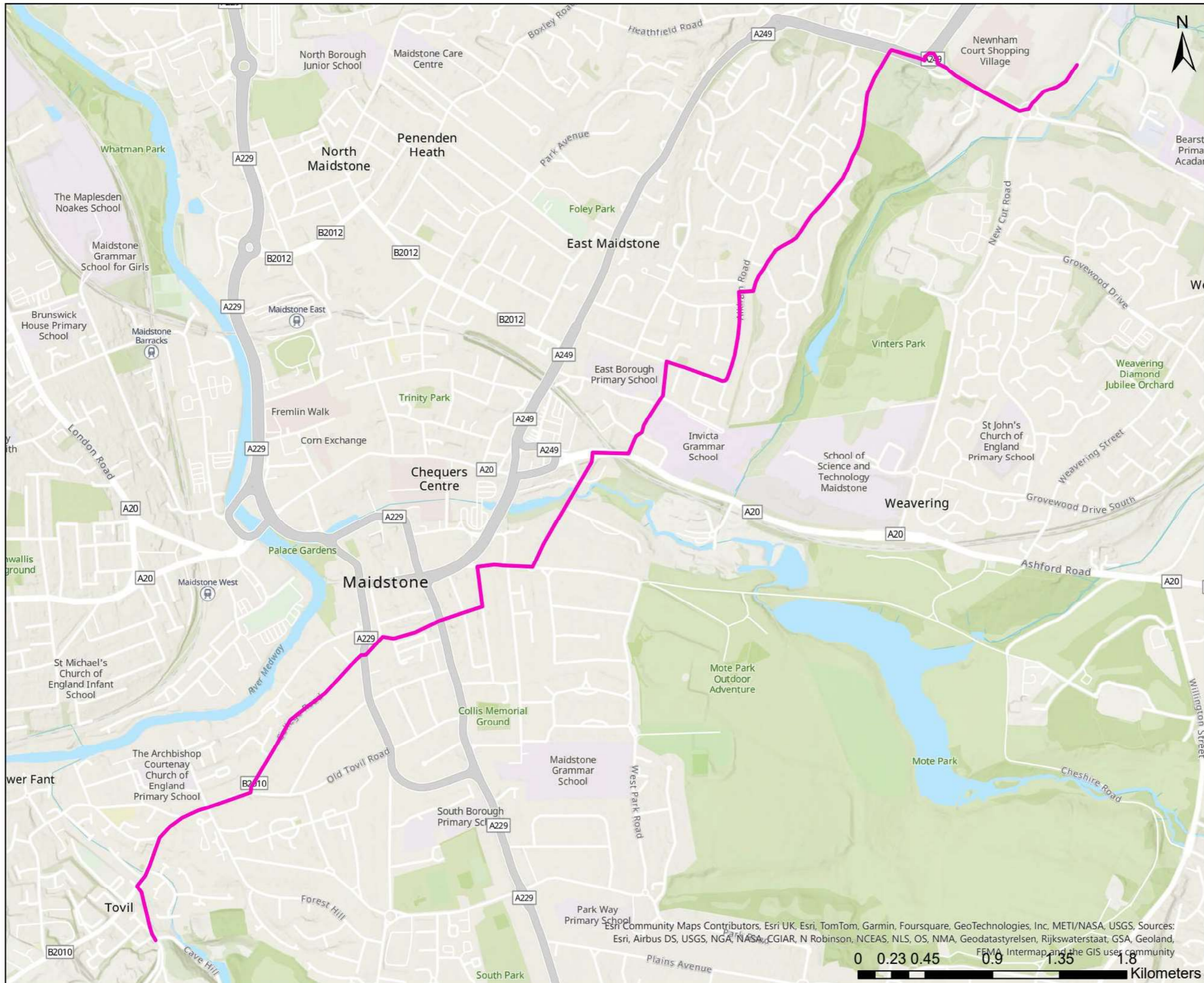
Maidstone Borough Council

CONSULTANT

AECOM Limited
Marlborough Court
10 Bricket Road
St Albans, AL1 3JX, UK
T +44-1727-53-5000
www.aecom.com

LEGEND

Route 8 - Tovil to
Maidstone Medical
Campus



NOTES

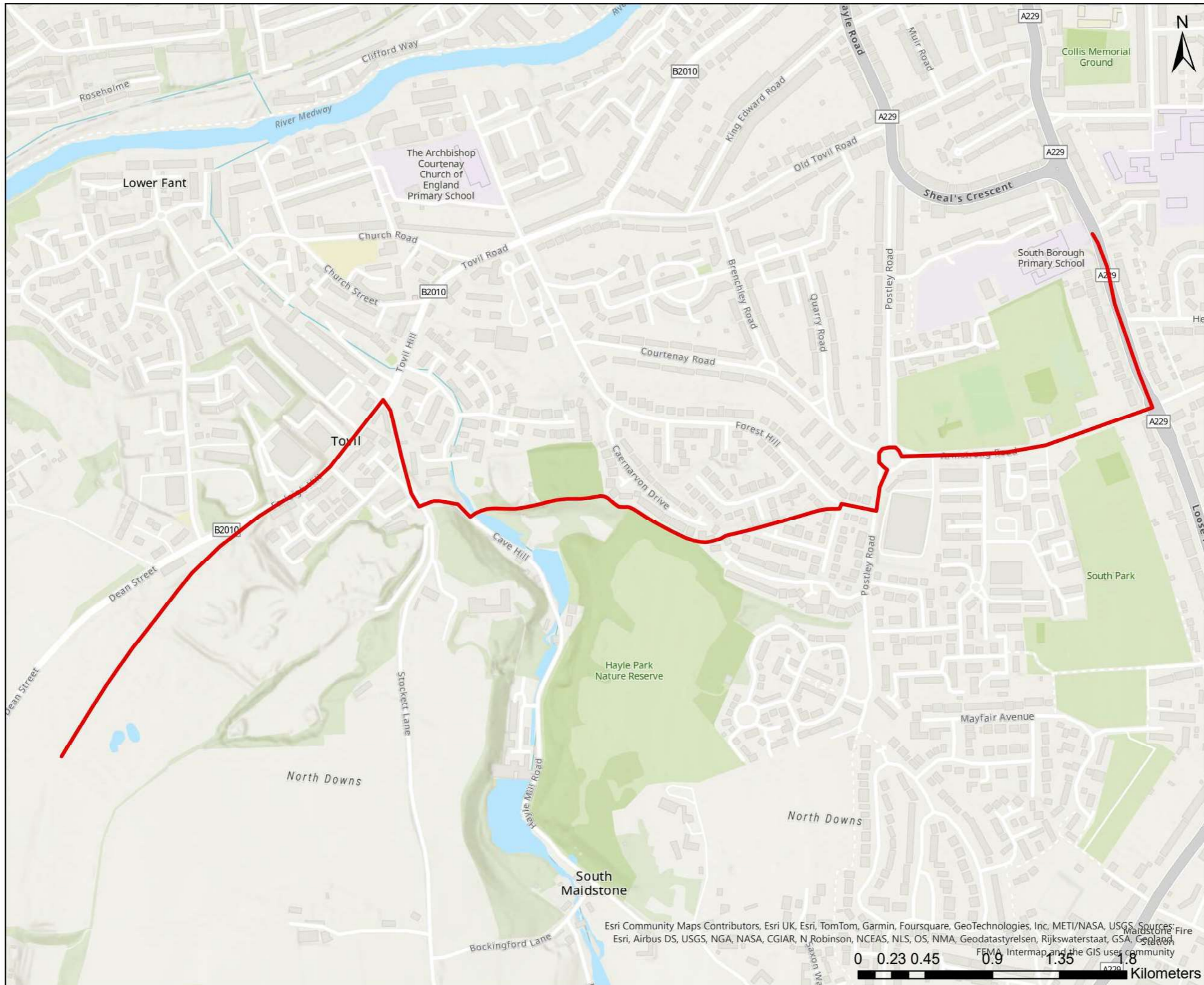
1: [Contains OS data © Crown copyright and database right 2022]

ISSUE PURPOSE

FINAL

Esri Community Maps Contributors, Esri UK, Esri, TomTom, Garmin, Foursquare, GeoTechnologies, Inc, METI/NASA, USGS, Sources: Esri, Airbus DS, USGS, NGA, NASA, CGIAR, N Robinson, NCEAS, NLS, OS, NMA, Geodatastyrelsen, Rijkswaterstaat, GSA, Geoland, FEMA, Intermap and the GIS user community

This drawing has been prepared for the use of AECOM's client. It may not be used, modified, reproduced or relied upon by third parties, except as agreed by AECOM or as required by law. AECOM accepts no responsibility, and denies any liability whatsoever to any party that uses or relies on this drawing without AECOM's express written consent. Do not scale this document. All measurements must be obtained from the stated dimensions.



PROJECT

Maidstone Local Cycling and Walking Infrastructure Plan

CLIENT

Maidstone Borough Council

CONSULTANT

AECOM Limited
 Marlborough Court
 10 Bricket Road
 St Albans, AL1 3JX, UK
 T +44-1727-53-5000
 www.aecom.com

LEGEND

— Route 9 - Tovil to North Shepway

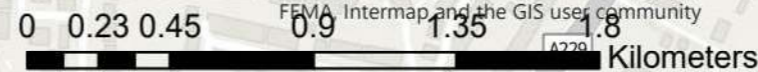
NOTES

1: [Contains OS data © Crown copyright and database right 2022]

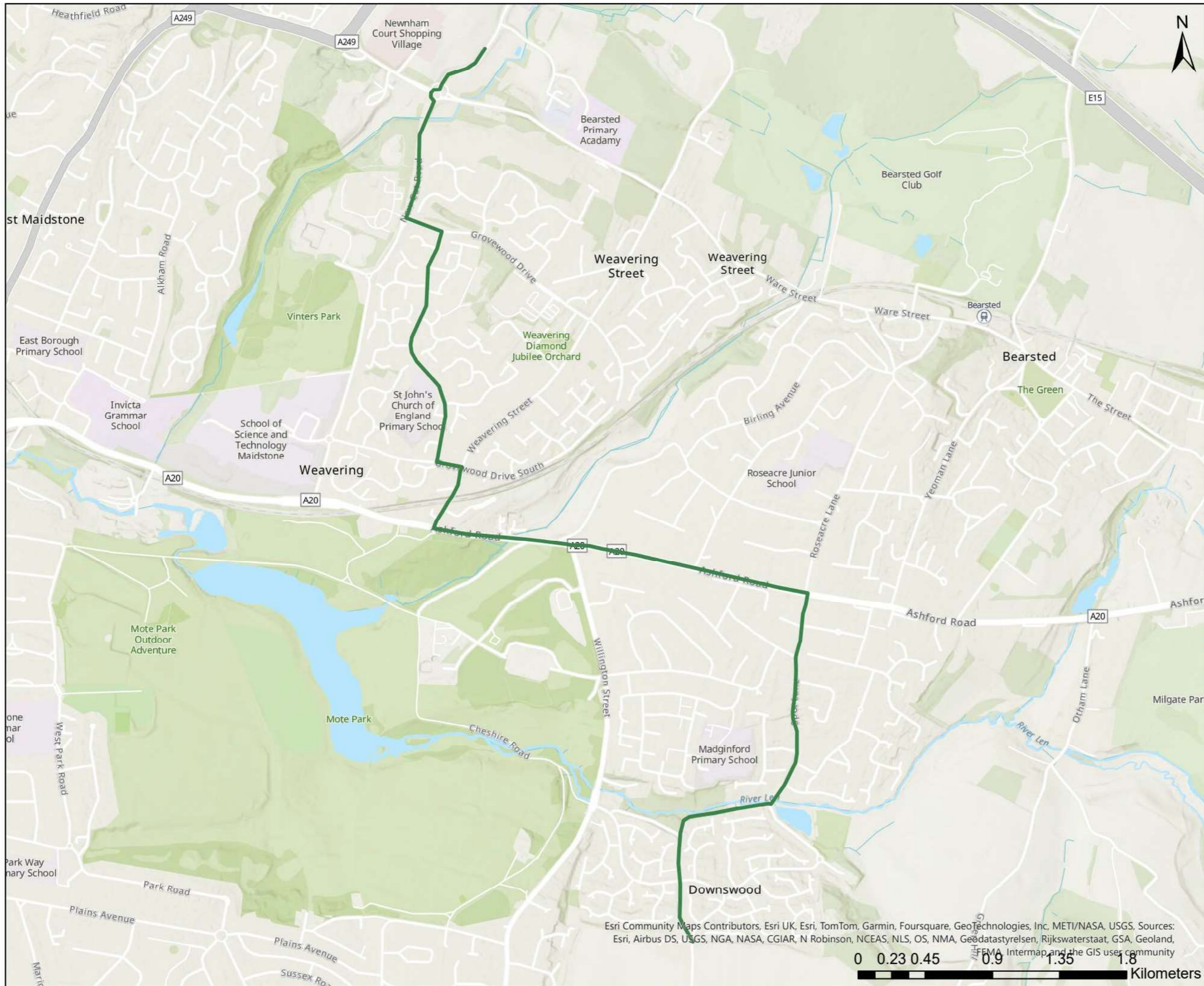
ISSUE PURPOSE

FINAL

Esri Community Maps Contributors, Esri UK, Esri, TomTom, Garmin, Foursquare, GeoTechnologies, Inc, METI/NASA, USGS, Sources: Esri, Airbus DS, USGS, NGA, NASA, CGIAR, N Robinson, NCEAS, NLS, OS, NMA, Geodatastyrelsen, Rijkswaterstaat, GSA, Geoland, FEMA, Intermap and the GIS user community



This drawing has been prepared for the use of AECOM's client. It may not be used, modified, reproduced or relied upon by third parties, except as agreed by AECOM, or as required by law. AECOM accepts no responsibility, and denies any liability whatsoever to any party that uses or relies on this drawing without AECOM's express written consent. Do not scale this document. All measurements shall be obtained from the stated dimensions.



PROJECT

Maidstone Local Cycling and Walking Infrastructure Plan

CLIENT

Maidstone Borough Council

CONSULTANT

AECOM Limited
 Marlborough Court
 10 Bricket Road
 St Albans, AL1 3JX, UK
 T +44-1727-53-5000
 www.aecom.com

LEGEND

- Route 10 - Downswood to
- Maidstone Medical Campus

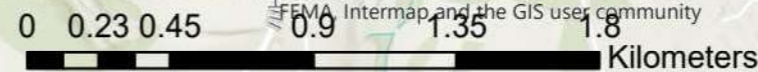
NOTES

1: [Contains OS data © Crown copyright and database right 2022]

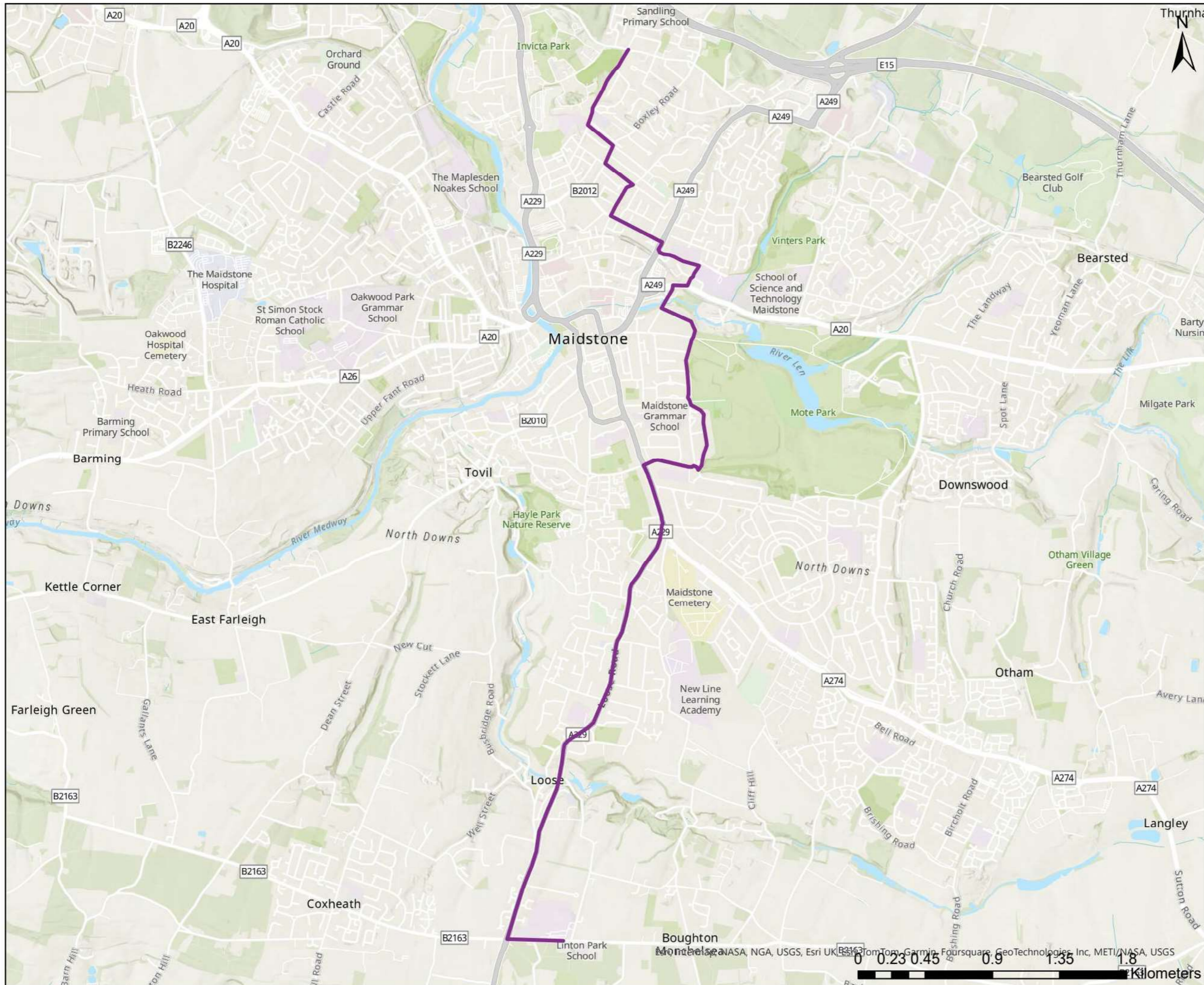
ISSUE PURPOSE

FINAL

Esri Community Maps Contributors, Esri UK, Esri, TomTom, Garmin, Foursquare, GeoTechnologies, Inc, METI/NASA, USGS, Sources: Esri, Airbus DS, USGS, NGA, NASA, CGIAR, N Robinson, NCEAS, NLS, OS, NMA, Geodatastyrelsen, Rijkswaterstaat, GSA, Geoland, FEMA, Intermap and the GIS user community



This drawing has been prepared for the use of AECOM's client. It may not be used, modified, reproduced or relied upon by third parties, except as agreed by AECOM or as required by law. AECOM accepts no responsibility, and denies any liability whatsoever to any party that uses or relies on this drawing without AECOM's express written consent. Do not scale this document. All measurements must be obtained from the stated dimensions.



PROJECT

Maidstone Local Cycling and Walking Infrastructure Plan


CLIENT

Maidstone Borough Council

CONSULTANT

AECOM Limited
 Marlborough Court
 10 Bricket Road
 St Albans, AL1 3JX, UK
 T +44-1727-53-5000
 www.aecom.com

LEGEND

 Route 11- Peneden Heath to Cornwallis Academy

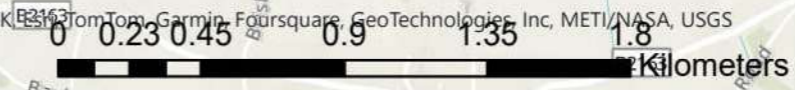
NOTES

1: [Contains OS data © Crown copyright and database right 2022]

ISSUE PURPOSE

FINAL

This drawing has been prepared for the use of AECOM's client. It may not be used, modified, reproduced or relied upon by third parties, except as agreed by AECOM, or as required by law. AECOM accepts no responsibility, and denies any liability whatsoever to any party that uses or relies on this drawing without AECOM's express written consent. Do not scale this document. All measurements shall be obtained from the stated dimensions.



PROJECT

Maidstone Local Cycling and Walking Infrastructure Plan

CLIENT

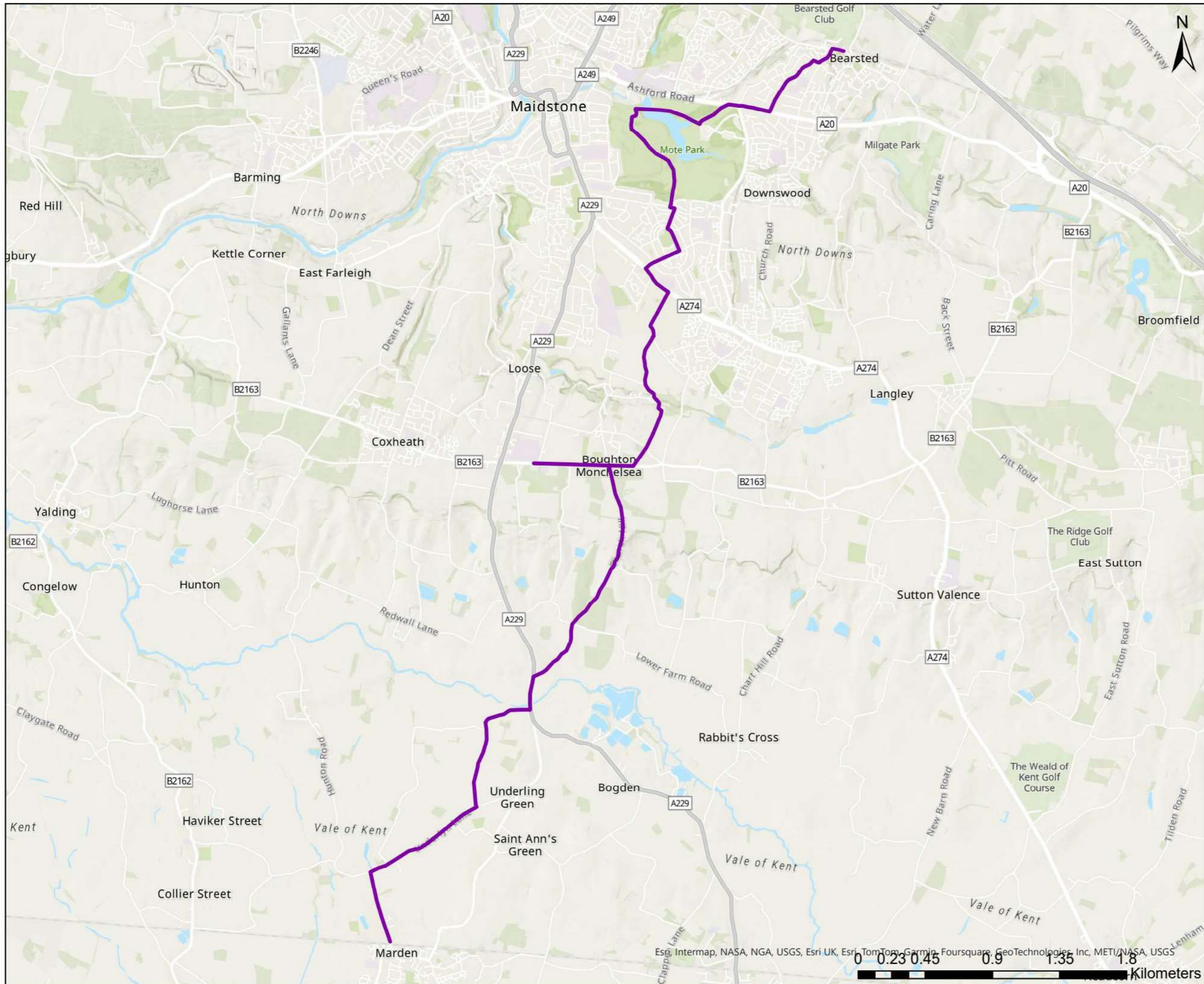
Maidstone Borough Council

CONSULTANT

AECOM Limited
Marlborough Court
10 Bricket Road
St Albans, AL1 3JX, UK
T +44-1727-53-5000
www.aecom.com

LEGEND

Route 14 - Bearsted to Marden via Loose



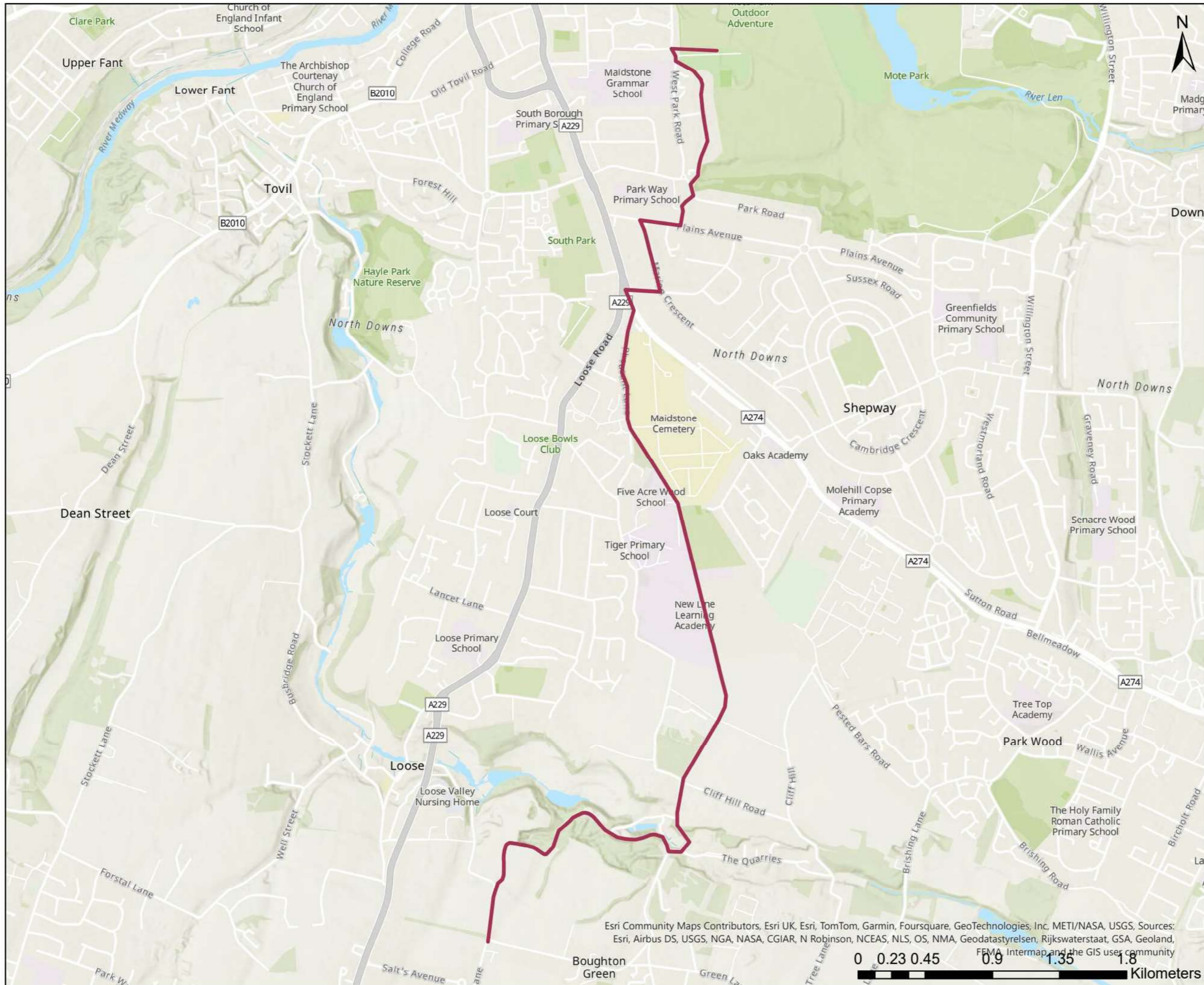
NOTES

1: [Contains OS data © Crown copyright and database right 2022]

ISSUE PURPOSE

FINAL

This drawing has been prepared for the use of AECOM's client. It may not be used, modified, reproduced or relied upon by third parties, except as agreed by AECOM or as required by law. AECOM accepts no responsibility, and denies any liability whatsoever to any party that uses or relies on this drawing without AECOM's express written consent. All measurements shall be obtained from the stated dimensions.



AECOM

PROJECT

Maidstone Local Cycling and Walking Infrastructure Plan

CLIENT

Maidstone Borough Council

CONSULTANT

AECOM Limited
 Marlborough Court
 10 Bricket Road
 St Albans, AL1 3JX, UK
 T +44-1727-53-5000
 www.aecom.com

LEGEND

Route 15 - Boughton Monchelsea to Shepway

NOTES

1: [Contains OS data © Crown copyright and database right 2022]

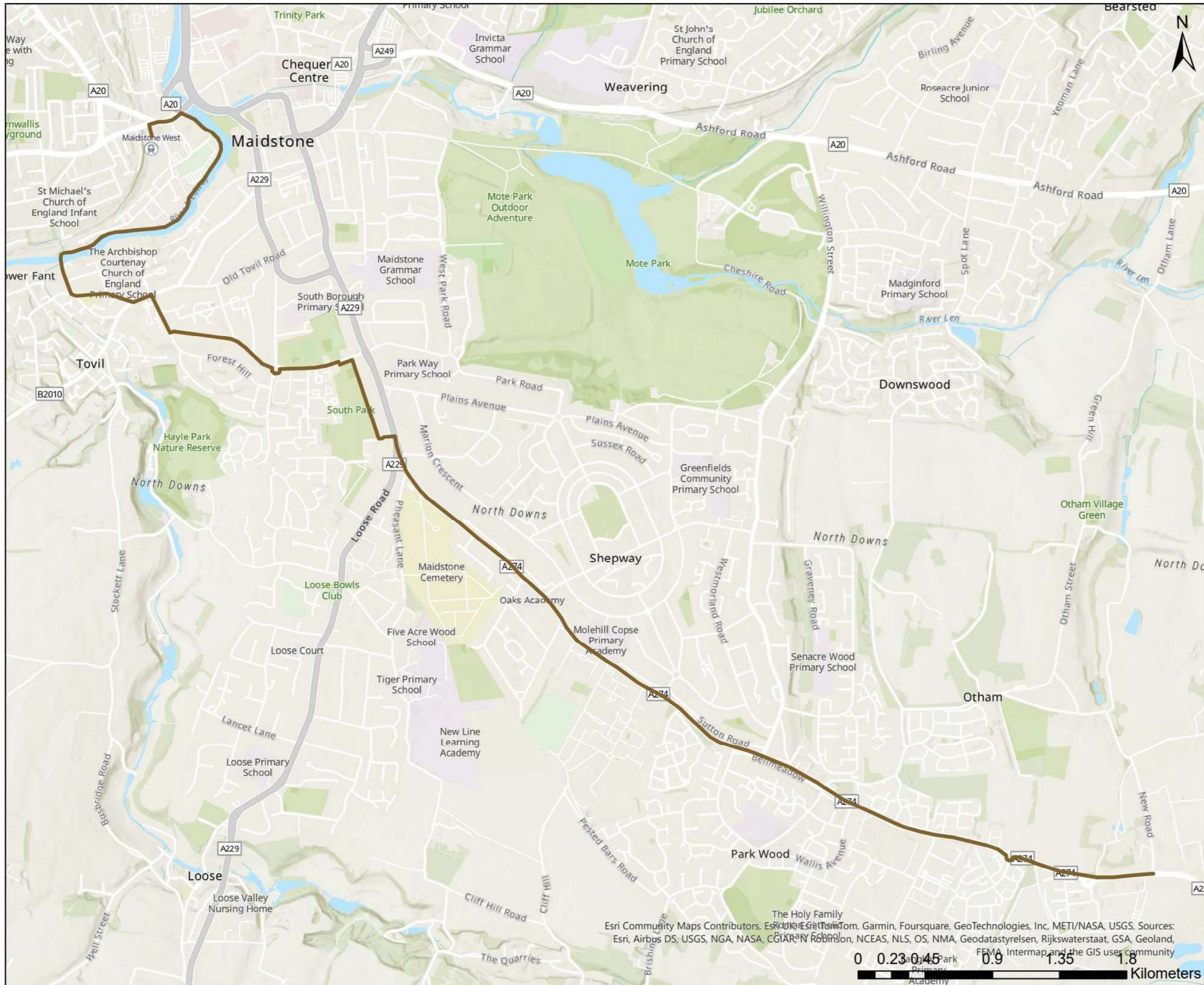
ISSUE PURPOSE

FINAL

Esri Community Maps Contributors, Esri UK, Esri, TomTom, Garmin, Foursquare, GeoTechnologies, Inc, METI/NASA, USGS, Sources: Esri, Airbus DS, USGS, NGA, NASA, CGIAR, N Robinson, NCEAS, NLS, OS, NMA, Geodatastyrelsen, Rijkswaterstaat, GSA, Geoland, FEMA, Intermap and the GIS user community



This drawing has been prepared for the use of AECOM's client. It may not be used, modified, reproduced or relied upon by third parties, except as agreed by AECOM or as required by law. AECOM accepts no responsibility, and denies any liability whatsoever to any party that uses or relies on this drawing without AECOM's express written consent. Do not scale this document. All measurements must be obtained from the stated dimensions.



AECOM

PROJECT

Maidstone Local Cycling and Walking Infrastructure Plan


CLIENT

Maidstone Borough Council

CONSULTANT

AECOM Limited
 Marlborough Court
 10 Bricket Road
 St Albans, AL1 3JX, UK
 T +44-1727-53-5000
 www.aecom.com

LEGEND

 Route 16 - Langley to Maidstone Town Centre

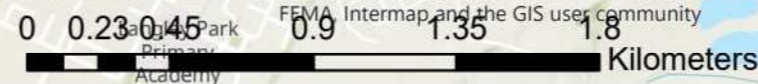
NOTES

1: [Contains OS data © Crown copyright and database right 2022]

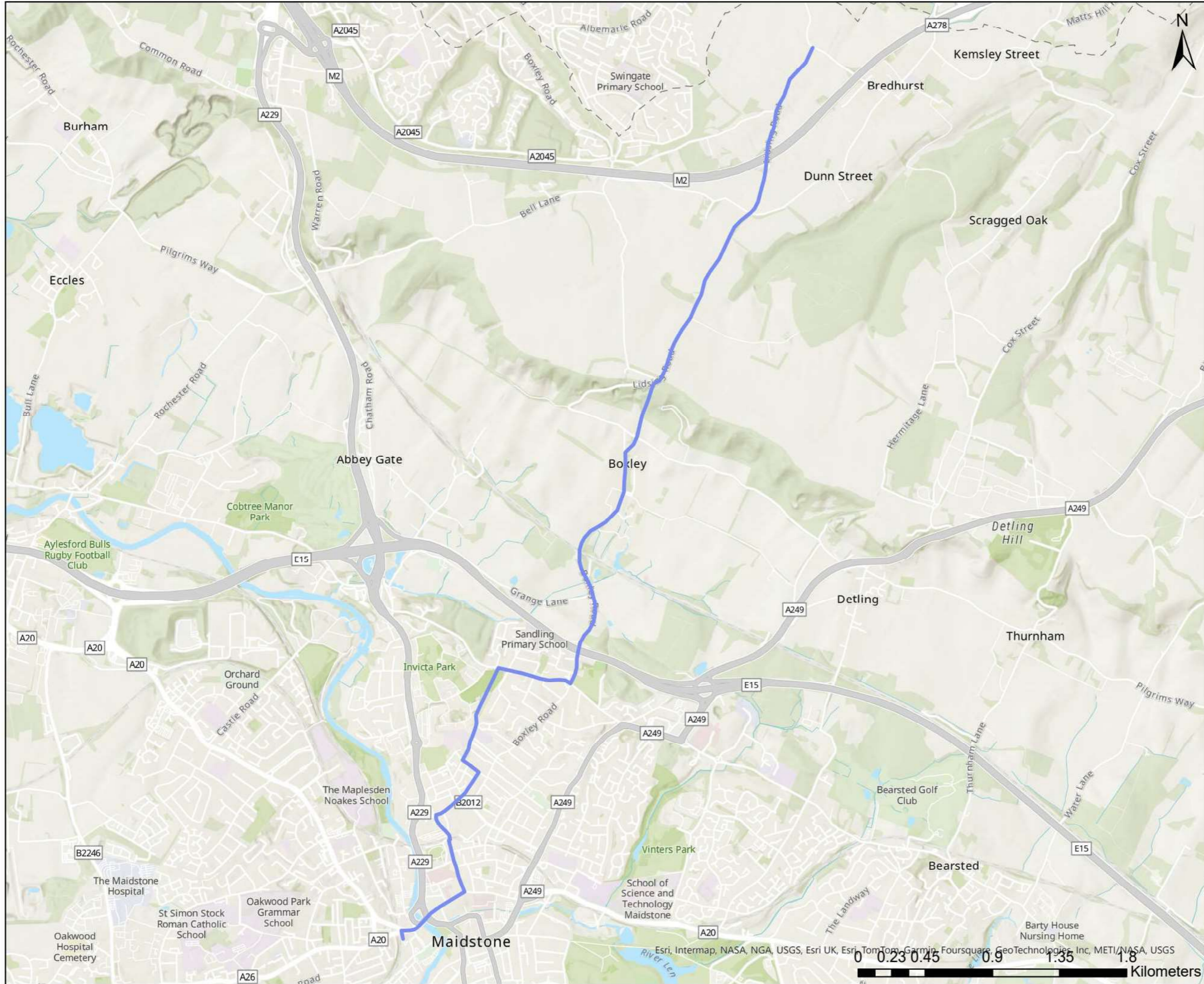
ISSUE PURPOSE

FINAL

Esri Community Maps Contributors, Esri, Garmin, Foursquare, GeoTechnologies, Inc, METI/NASA, USGS, Sources: Esri, Airbus DS, USGS, NGA, NASA, CIA, NGA, Robinson, NCEAS, NLS, OS, NMA, Geodatastyrelsen, Rijkswaterstaat, GSA, Geoland, FEMA, Intermap and the GIS user community



This drawing has been prepared for the use of AECOM's client. It may not be used, modified, reproduced or relied upon by third parties, except as agreed by AECOM or as required by law. AECOM accepts no responsibility, and denies any liability whatsoever to any party that uses or relies on this drawing without AECOM's express written consent. Do not scale this document. All measurements must be obtained from the stated dimensions.



PROJECT

Maidstone Local Cycling and Walking Infrastructure Plan

CLIENT

Maidstone Borough Council

CONSULTANT

AECOM Limited
 Marlborough Court
 10 Bricket Road
 St Albans, AL1 3JX, UK
 T +44-1727-53-5000
 www.aecom.com

LEGEND

— Route 18 - Lidsing to Maidstone Town Centre

NOTES

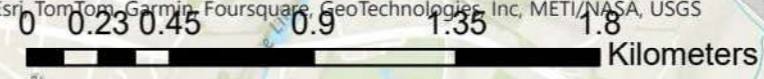
1: [Contains OS data © Crown copyright and database right 2022]

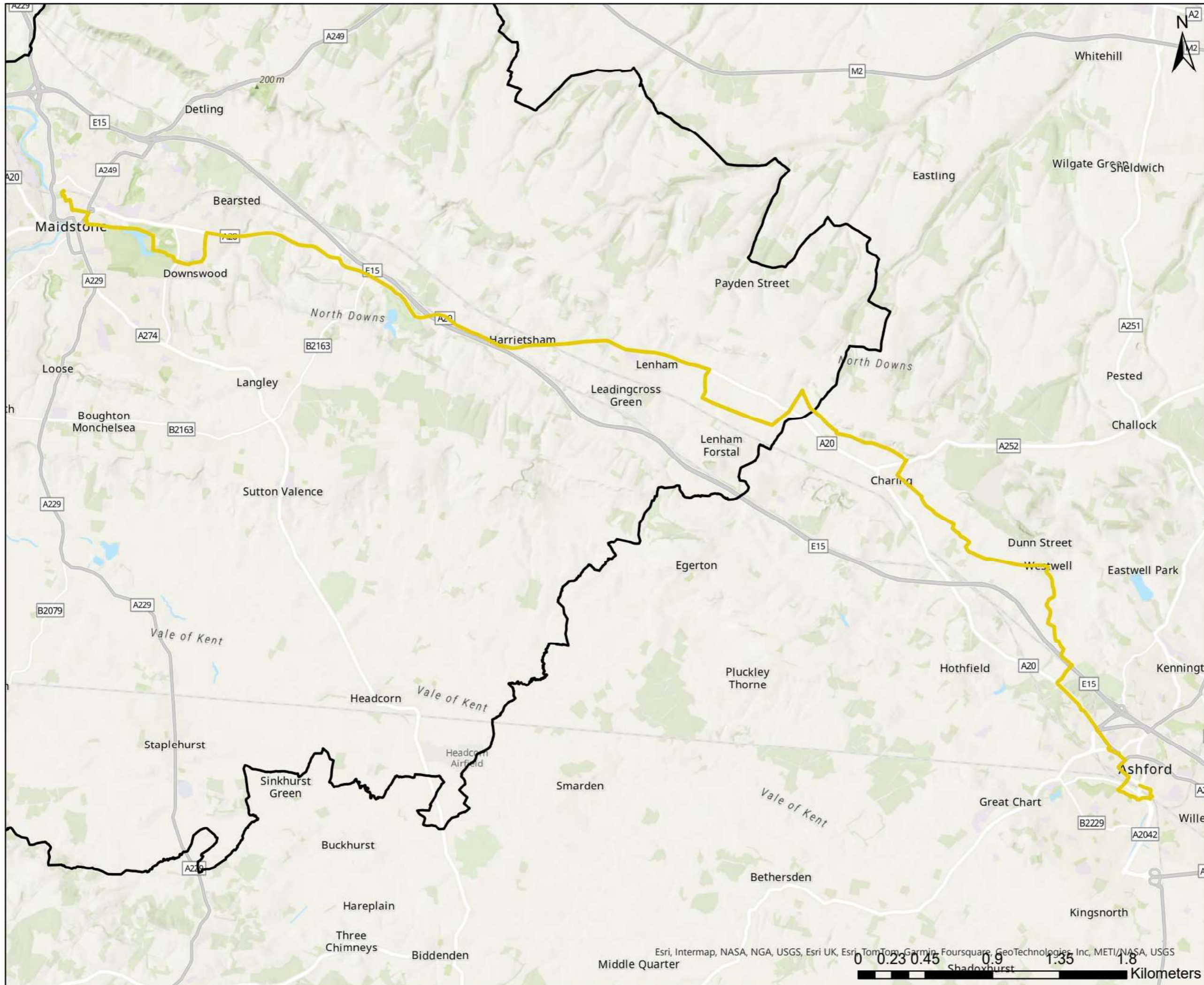
ISSUE PURPOSE

FINAL

This drawing has been prepared for the use of AECOM's client. It may not be used, modified, reproduced or relied upon by third parties, except as agreed by AECOM, or as required by law. AECOM accepts no responsibility, and denies any liability whatsoever to any party that uses or relies on this drawing without AECOM's express written consent. Do not scale this document. All measurements shall be obtained from the stated dimensions.

Esri, Intermap, NASA, NGA, USGS, Esri UK, Esri, TomTom, Garmin, Foursquare, GeoTechnologies, Inc, METI/NASA, USGS





PROJECT

Maidstone Local Cycling and Walking Infrastructure Plan

CLIENT

Maidstone Borough Council

CONSULTANT

AECOM Limited
 Marlborough Court
 10 Bricket Road
 St Albans, AL1 3JX, UK
 T +44-1727-53-5000
 www.aecom.com

LEGEND

- Route 19 - Ashford to Maidstone
- Maidstone Boundary

NOTES

1: [Contains OS data © Crown copyright and database right 2022]

ISSUE PURPOSE

FINAL

This drawing has been prepared for the use of AECOM's client. It may not be used, modified, reproduced or relied upon by third parties, except as agreed by AECOM or as required by law. AECOM accepts no responsibility, and denies any liability whatsoever to any party that uses or relies on this drawing without AECOM's express written consent. Do not scale this document. All measurements must be obtained from the stated dimensions.