

Concept

- The 'Cobtree Manor Park' public art project is an exciting series of contemporary site-specific stone sculptures.
- The concept for the design explores the pathways around the parks natural habitat while sympathetically referencing its history.
- There will be four sculptures in total each with visual elements relating to the physical geography of the site such as, the view from the pond, the arboretum and the woodland walk.
- The sculpture trail will encourage visitors to explore the full extent of the park, establishing places of interest while also being an informative and educational experience for all ages.
- The sculptural markers located across the park will reference the main sculpture at the entrance to the park, which will also signify the start and end of the trail. The main entrance sculpture will draw on the accessibility created by the weaving pathways in its design while also acting as a visual metaphor for what can be discovered further into the parks habitat.

Area 1

Title: Trails with Tales

Site: Main Entrance

Dimensions: 3.3 m x 2.1 m x 1.1m

Materials: Irish Blue Limestone, Kentish Ragstone and Bronze

- The sculpture is made up of three curved and twisting pathways carved from a single slab of Irish Blue Limestone.
- The curved and elegant sculpture symbolises three pathways. The stones interlocking paths are pierced, allowing for views through the sculpture. Each pathway is carved to create an illusion of perspective.
- The sculpture is fixed to a base stone. The plinth is dressed with local Kentish Rag stone. There is potential for a plaque with 'Cobtree Manor Park' or

alternative information that could be carved onto its surface and recessed into the plinth.

- The widest curved pathway on the sculpture will have the bands and text markings of a topographical map of the park, referencing the undulating landscape. This may even include some of the organic 'bunker' shapes from the neighboring golf course.
- The second curved pathway will represent water and will relate to the small pond situated in the park and the view down to the River Medway. The surface of the stone will be carved and polished to mimic the flow and the reflection of the water.
- The third pathway will represent the arboretum and the variety of species of trees in the park. It will have a series of leaf shapes and seeds carved onto its surface.
- Located at the very top of the main pathway stands a small bronze elephant, subtly reminding us of the history of the park and Sir Garrard's 'Zoo'.

The use of imagery carved into the main sculpture in Area 1, referencing nature (water, tree species, and woodland) along with reference to Maidstone Zoo will be reflected in some way on the three sculptures located in Area 2, along the new footpaths. The sculptures will indicate and mark these locations within the park, the intention is that it will encourage visitors to explore and learn more about their immediate environment.

Area 2

Title: 'Zebra Rock'

Site 1: Small pond in line with the red granite gateposts

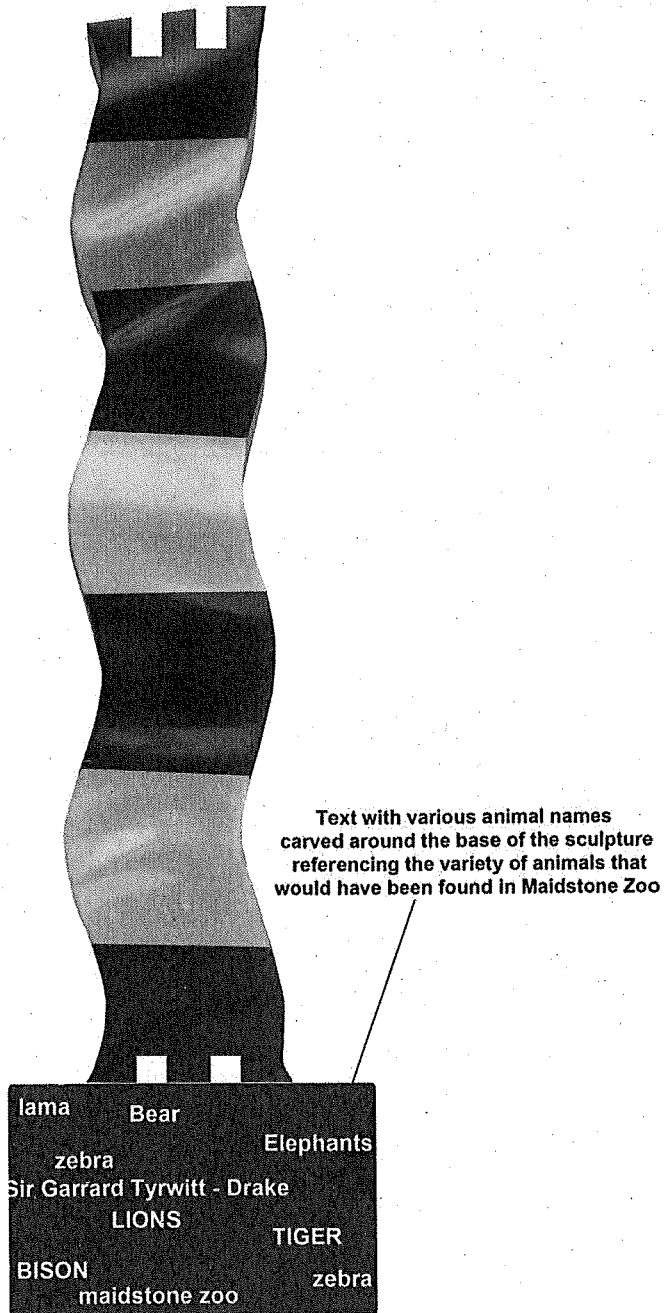
Dimensions: 3 m x 50 cm x 50 cm

Materials: Irish Blue Limestone

'Sir Garrard Tyrwhitt-Drake, a well-travelled and colourful character was an eccentric man and it is believed that he had a fascination for the Zebra'
http://www.elephant.se/location2.php?location_id=1031

- 'Zebra Rock' will have a tall, strong single rippling wave as its form.
- Its distinctive black and white striped colouring will stand like a marker, visible from the bottom of the hill.
- It's positioning will be in line with and echo the monolithic granite gateposts at the bottom of the hill.
- The sculpture is constructed using a combination of polished 'Kilkenny Limestone', which is black in colour and polished white 'Portland limestone'.
- The top and bottom sections of the sculpture suggest an architectural feature. This may be interpreted as castle turrets or they may be seen as structural links used for the construction of the work.
- The treatment of the front surface of the stone will be carved to reference water. The stone will have a highly polished ripple effect, mimicking the movement and reflective qualities of water and the River Medway.
- On the plinth base stone there will be a series of carved names of animals that made up the collection at Maidstone Zoo.
- The text would be punctuated by small 20mm bronze discs.
- Through engagement and dialogue with the Cobtree Estate Committee I would confirm, explore and collect other official, rumoured and mythical versions of the history of the park, which may also be considered for inclusion.
- The intention is that the sculptures text and surface textures could provide

'rubblings' for children and school groups to collect and gather along the sculpture trail.



Area 2

Title: 'Corylus avellana'

Site 2: The Arboretum

Dimensions: 2m x 1.7m x 3 m

Materials: Irish Blue Limestone

- The sculpture position is chosen to signify to the visitor that they are within the Arboretum area of the park.
- The concept for this sculpture comes from using the Cobtree leaf. (Another possibility could be to use another variety of leaf found within the arboretum at Cobtree, called the 'Paulownia tree').
- The distinctive shape of the leaf is CNC machine cut from a slab of Irish Blue Limestone by Feeleystone Quarry.
- The name and Latin name of the tree and leaf will be carved onto the surface of the slab.
- The stone with its hollow leaf outline will create an ever-changing window of colour as the trees change with the seasons.
- The stone cut from the slab with its distinctive leaf shape pattern is securely fixed to the ground. It rests on the ground like a metaphor for a leaf that has fallen from a tree.
- The cut out leaf shape will be the correct height to be used as a sculptural seat.
- It will be extremely interactive to the younger visitor with its playful concept and potential for wax rubbings from its surface. It will also add 'technological intrigue' around its fabrication by visitors who come across it along the pathway.

Area 2

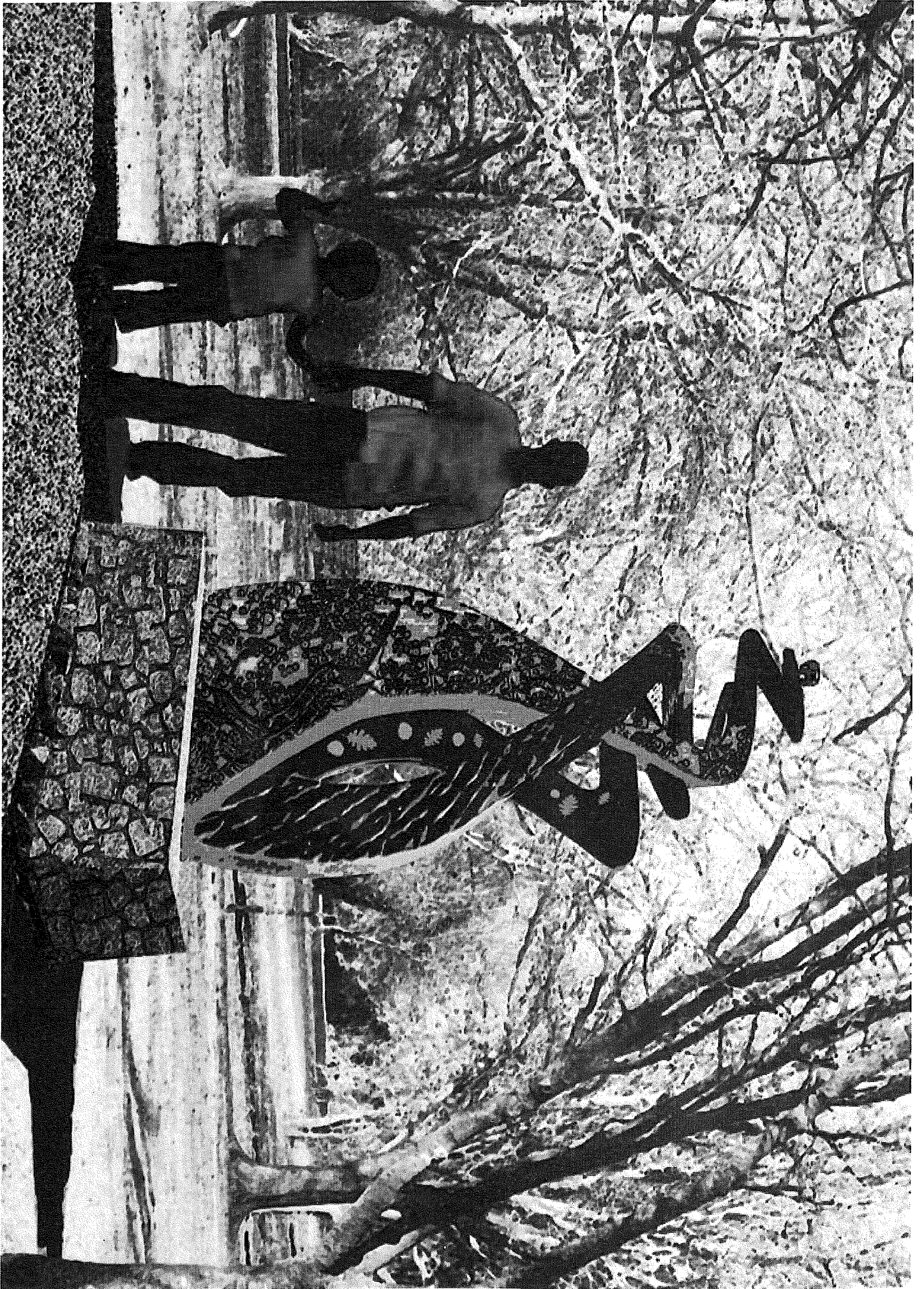
Title: 'Seed Stack'

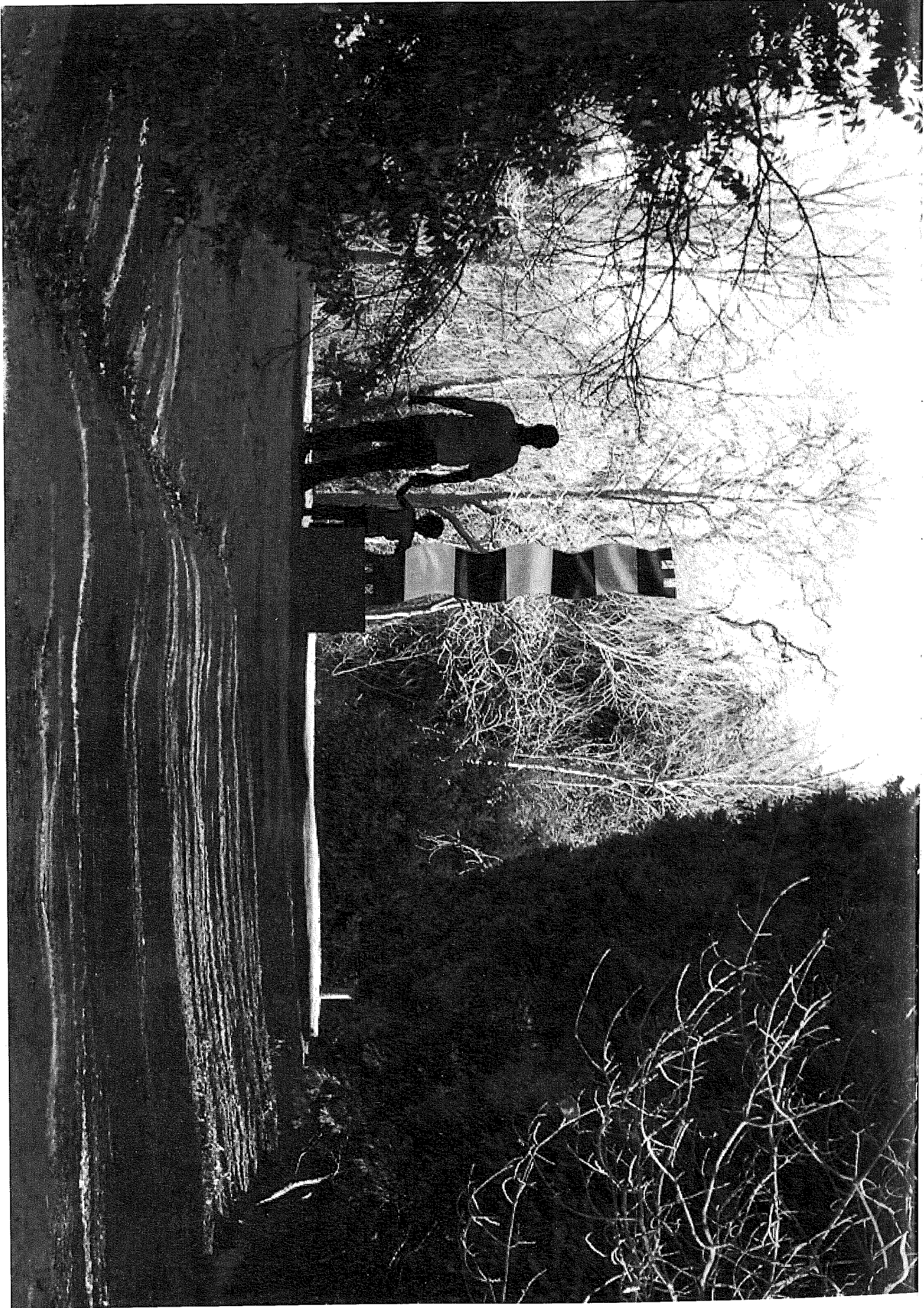
Site 3: At the clearing at the top of the avenue of trees, signifying the start of the Woodland Walk pathway

Dimensions: 2m 1.5m x 1.5m

Materials: Irish Blue Limestone and Resin Bonded gravel.

- The concept for this sculpture comes from the variety of seeds and nuts produced and found within Cobtree Park.
- This is a fun and playful sculpture, which also references the wildlife one might encounter within the woodland setting as they forage and harvest for food.
- The seeds also represent growth and new life cycles, which supports the history of the park from its original beginnings and owners through to its current users, the people of Maidstone.
- The sculpture comprises of three spherical stones pinned and fixed together.
- Two stones have been cut revealing a polished seed interior.
- The spheres are heavily textured on their outer surface, creating an interesting tactile quality for the visitor.
- The sculptures are fixed onto a Resin Bonded surface and two 'Husk' crescent shaped stones are also fixed to the foundations.
- The 'seed husks' signify the missing sections of the seeds outer shell and could also be raised to act as sculptural seating.





SCULPTURE 2 – ADJACENT TO POND



SCULPTURE 3 – ARBORETUM

