

## AGENDA

### COMMUNITY, ENVIRONMENT AND HOUSING OVERVIEW AND SCRUTINY COMMITTEE MEETING (ACTING AS THE CRIME AND DISORDER OVERVIEW AND SCRUTINY COMMITTEE)



Date: Tuesday 10 March 2015  
Time: 6.30 pm  
Venue: Town Hall, High Street, Maidstone



Overview and Scrutiny

Membership:

Councillors: Mrs Joy, D Mortimer (Vice-Chairman), Munford,  
Mrs Parvin, Round, Sargeant, Mrs Stockell, Vizzard  
and J.A. Wilson (Chairman)

---

Page No.

- 1. The Committee to consider whether all items on the agenda should be web-cast**
- 2. Apologies**
- 3. Notification of Substitute Members**
- 4. Notification of Visiting Members**
- 5. Disclosures by Members and Officers**
- 6. To consider whether any items should be taken in private because of the possible disclosure of exempt information**
- 7. Minutes of the Crime and Disorder Committee meeting held on 14 October 2014. 1 - 7**

The minutes of the meeting held on 14 October 2014 have already been approved and are attached for information only.
- 8. Maidstone Community Safety Partnership Plan 2013 - 2018 8 - 83**

Interviews with:

  - Alison Broom, Chairman, Safer Maidstone Partnership;
  - Inspector Mick Gardner, Vice-Chairman, Safer Maidstone Partnership;
  - John Littlemore, Head of Housing and Community Services;
  - Sarah Robson, Community Partnerships Manager;
  - Sam Scales, Community Safety Officer, Maidstone Borough Council

**Continued Over/:**

---

**Issued on 26 February 2015**

*Alison Broom*

**Alison Broom, Chief Executive, Maidstone Borough Council,  
Maidstone House, King Street, Maidstone Kent ME15 6JQ**

- Inspector Jody Gagan-Cook, Kent Police; and
- A representative from Maidstone Mediation.

**9. INFORMATION ONLY: MAIDSTONE PROTOCOLS FOR CRIME  
AND DISORDER REDUCTION PARTNERSHIP OVERVIEW AND  
SCRUTINY**

**84 - 88**

The reports included in Part I of this agenda can be made available in **alternative formats**. For further information about this service, or to arrange for special facilities to be provided at the meeting, **please contact Orla Sweeney on 01622 602524**. To find out more about the work of the Overview and Scrutiny Committees, please visit [www.maidstone.gov.uk/osc](http://www.maidstone.gov.uk/osc)

## MAIDSTONE BOROUGH COUNCIL

### Community, Environment and Housing Overview and Scrutiny Committee acting as the Crime and Disorder Overview and Scrutiny Committee

#### MINUTES OF THE MEETING HELD ON TUESDAY 14 OCTOBER 2014

**Present:** Councillor J.A. Wilson (Chairman), and  
Councillors Mrs Joy, D Mortimer, Newton, Mrs Parvin,  
Round, Sargeant, Mrs Stockell and Vizzard

24. THE COMMITTEE TO CONSIDER WHETHER ALL ITEMS ON THE AGENDA SHOULD BE WEB-CAST

**RESOLVED:** That all items on the agenda be webcast.

25. APOLOGIES

It was noted that apologies for absence had been received from Councillors Munford and Watson.

26. NOTIFICATION OF SUBSTITUTE MEMBERS

The following substitute members were noted:

Councillor Newton for Councillor Munford, and;  
Councillor Vizzard for Councillor Watson.

27. NOTIFICATION OF VISITING MEMBERS

There were no visiting members.

28. DISCLOSURES BY MEMBERS AND OFFICERS

There were no disclosures by members or officers.

29. TO CONSIDER WHETHER ANY ITEMS SHOULD BE TAKEN IN PRIVATE BECAUSE OF THE POSSIBLE DISCLOSURE OF EXEMPT INFORMATION

**RESOLVED:** that the items on the agenda be taken in public as proposed.

30. MINUTES OF THE CRIME AND DISORDER OVERVIEW AND SCRUTINY COMMITTEE MEETING HELD ON 11 FEBRUARY 2014

It was noted that the minutes of the meeting held on 11 February 2014 had been approved at the Community, Leisure Services and Environment Overview and Scrutiny meeting of 11 March 2014.

31. SAFER MAIDSTONE PARTNERSHIP (SMP) UPDATE

The Chair welcomed Alison Broom, Chair of the Safer Maidstone Partnership (SMP) and Chief Executive of Maidstone Borough Council and Chief Inspector Simon Wilson, Vice Chair of the Safer Maidstone Partnership, to the meeting.

Alison Broom explained that she was new as Chair of SMP and as yet was to chair a meeting. The SMP had an excellent record of good practice and partnership working and would be focusing on:

- Anti-social behaviour;
- Substance misuse;
- Violent crime.

Specific issues brought to the attention of SMP by officers included legal highs and hoarding.

Ms Broom informed the committee she was involved in other partnerships including West Kent Health and Wellbeing Board, Maidstone Health Partnership, the Kent Action Drug and Alcohol Team and was the district representative on the Kent Child Safeguarding Board. Her membership of these partnerships brought an insight into emerging issues to the committee.

CI Wilson advised the committee that focus on domestic violence and engagement with the victims had resulted in an increase in the reports of violent crime. It was felt that this demonstrated increased confidence in victims of domestic violence to report the crime.

CI Wilson informed the committee of the focus on the day time economy, in particular the street population and creating a safe environment for people to enjoy the night time economy.

The committee was informed that since the last meeting the SMP had received training from a solicitor on the new anti-social behaviour legislation, which had proved very useful.

**RESOLVED:** That the update on the Safer Maidstone Partnership be noted.

32. ANNUAL STRATEGIC ASSESSMENT AND COMMUNITY SAFETY PARTNERSHIP PLAN

John Littlemore, Head of Housing and Community Services updated the committee on the Annual Strategic Assessment and Community Safety Partnership Plan.

He informed the committee that the SMP were required to produce a five year strategic plan outlining the direction of the partnership. In order to do that an annual assessment was carried out to ensure the strategy met

the demands of the borough and mirrored the Police and Crime Commissioners (PCC) plan.

The annual refresh was tested against how the community feels. Local forums, parish councils and the Overview and Scrutiny Committee were consulted during October and December 2014.

Concern was raised over the Kent County Council review of Community Wardens. It was agreed they were a valuable community resource particularly in rural areas where they dealt with rising anti-social behaviour. It was agreed that it was important Maidstone Borough Council fed into the review consultation.

CI Wilson explained the crime statistics had changed to show five year trends as opposed to year on year, month on month figures. This allowed easier analysis of trends and themes in threats and risks of crime. This in turn facilitated a more considered approach to dealing with crime.

CI Wilson responded to a question on the reduced figures of victim based recorded crimes in some wards. CI Wilson explained that a lot of work had been done focusing on the wards shown in the report but the committee should note the figures represented small numbers of crimes.

It was agreed that a chart showing crime figures compared with other councils would be available at the next committee meeting.

**RESOLVED:** that:

1. The process and timetable by which the Safer Maidstone partnership produces its annual Strategic Assessment and rolling plan be noted.
2. The date of the next Crime and Disorder Overview and Scrutiny Committee meeting to be moved (from 14 April to 10 March 2015) to enable consideration of the Safer Maidstone Partnerships annual Strategic Assessment and rolling plan.
3. The Chair of the committee write a letter to Kent County Councils' Cabinet Member for Community Services to express the committee's deep concern should the Community Warden service cease and to appeal to him to find the funding to ensure its continuation.
4. That the Head of Housing and Community Service and the Chair of the Safer Maidstone Partnership formulate and submit a response to Kent County Councils consultation on the review of the Community Warden service.

33. AMENDMENT TO THE ORDER OF BUSINESS

**RESOLVED:** that item 10, Priority Sub-Group Update – Road Safety be moved to the last item on the agenda.

34. PRIORITY SUB-GROUP UPDATE - NIGHT TIME ECONOMY VIOLENT CRIME

The Chair welcomed Inspector Jody Gagan-Cook of Kent Police to the meeting.

Inspector Gagan-Cook informed the committee that Maidstone was one of the safest places in Kent. The Night Time Economy was policed and managed in partnership with other agencies, the Blue Bus volunteers and other volunteers. Time and resources had also been invested in the day time economy resulting in 24/7 policing provided when and where it was needed.

Inspector Gagan-Cook went on to inform the committee that violent crime figures had stayed the same.

The committee heard that the Urban Blue Bus was still in operation but in a different format. Over the past year the Urban Blue Bus had engaged with 65 people during the Night Time Economy and of these 40 had returned to volunteer to help on the bus. The new Urban Blue bus was launched 9 October 2014 and was equipped with beds and provided more facilities.

The committee discussed the cost of policing and clearing up after the Night Time Economy compared to the direct financial gain and agreed this needed exploring.

Inspector Gagan-Cook advised the committee that there were sufficient numbers of security staff on duty during the Night Time Economy. All were licenced and there was always a 'lead bouncer' on duty. Any 'bouncers' found on duty without a licence or were found to have issues with their licence went to be prosecuted. Security staff had meetings every two weeks with the police. Inspector Gagan-Cook emphasised the co-operation and support between the police, clubs, pubs and restaurants and explained they also held briefings before the start of each busy evening.

The committee was informed that the relationship between the police and the CCTV operation worked well, especially when the individual operators knew who they were working with in Maidstone.

The committee agreed if the Portman Group produced a report comparing what different areas did during their Night Time Economy it would be useful if the committee were provided with a copy.

**RESOLVED:** that the Head of Housing and Community Services provide the committee with an analysis of the costs of policing and clearing up after the Night Time Economy and the financial benefits it provided.

35. PRIORITY SUB-GROUP UPDATE - STREET POPULATION TASK AND FINISH GROUP

The Chair welcomed Will Myers, Street Outreach Housing Officer and Kim Flain, Team Leader at the Crime Reduction Initiative to the meeting.

Mr Myers explained he was the project lead for the multi-agency initiative, which started in May 2014, and was based on the principles of the Urban Blue Bus. The project provided a support structure, with other agencies, to the Maidstone street population. The street population was not just homeless people but anyone on the street creating anti-social behaviour and involved a constant 'churn' of people.

Mr Myers went on to inform the committee that initially the project met with resistance from the street population, but in 23 weeks of the project there had been 470 points of engagement. This had resulted in 53 people being housed.

Out of the 91 identified members of the street population 64 were rough sleepers.

Mr Myers advised the committee that housing was provided to people with a local connection (through private rented, social housing providers or long term hostels) anyone without a local connection was returned to the area where they had a local connection.

Kim Flain explained the work of her team. The team employed two outreach workers, one of which was a nurse. The work of the team helped to stop service users disengaging with the Street Population project.

Ms Flain went on to explain there was a monthly clinic at Priority House where clients engaged with mental health practitioners. The outreach nurse operated from Pembury Hospital.

Mr Myers explained that hostel support structures provided high, medium and low support, with the homeless street population in need of high support, which many of them did not want to engage with due to the structure and rules involved.

Mr Myers informed the committee of plans to develop 'spartan' accommodation, where clients who did not meet the criteria for accommodation could live. The accommodation planned would provide minimum entry criteria, minimum house rules and furniture and required only the minimum housing benefit support. This project could potentially remove a large number of street homeless into sustainable accommodation.

Mr Myers explained the project engaged with all age groups but referred them to Social Services Safeguarding team if they were below 16 years old.

**RESOLVED:** that the Cabinet Member for Environment and Housing be recommended to explore funding opportunities to ensure the important work of the street population project continues.

36. PRIORITY SUB-GROUP UPDATE - ROAD SAFETY

The Chair welcomed Steve Horton, Road Safety Team, Kent County Council and Stuart Tickle, Kent Fire and Rescue Service.to the meeting.

Mr Horton gave a presentation on the statistics for Road Safety in the borough and explained that figures for Maidstone appeared high because it was the most populated and most trafficked borough. Killed or Seriously Injured figures were at or below target.

Mr Horton explained that casualty figures for Maidstone borough showed:

- Motorcycles – up slightly;
- Car users – down;
- Cyclists – up;
- Pedestrians – down.

The main age group involved in crashes were 20-24 year olds.

The largest number of crashes occurred on A26 and B2012.

Mr Horton advised the committee that the Road Safety Team had been working on education projects in local primary and secondary schools and colleges.

Other work had involved speed awareness courses and future campaigns planned were the winter drink drive campaign and the B-Viz campaign in local primary schools.

Mr Tickle gave a presentation and notified the committee of the new Road Safety Centre being built in Rochester.

Events delivered this year to date included:

- 'Carnage' delivered to a school in Queens Road, Maidstone following an RTC (road traffic collision) outside the premises in which students assisted in delivering first aid to victims;
- 50 Mid Kent College young people engaged in Road Safety Awareness through use of an engagement car designed for young drivers;
- Four 'Rush' sessions delivered in Maidstone schools in last quarter to raise road safety awareness.



Mr Tickle went on to advise the committee of events coming up which included:

- Road Safety Week – 17-23 November 2014 – called ‘Look Out For Each Other’;
- Licence to Kill – 19 November 2014 – all councillors were invited to attend;
- A ‘YEARS’ session with young offenders was planned in the new year for Maidstone offenders;
- Fire and Road safety event planned for Invicta barracks on 2 December 2014 for 400 soldiers and their families.

Mr Horton explained to the committee that they were trying to engage with insurance companies and parish councils and wards to provide information on incidents that occurred but were not reported because no one was injured, to provide a more complete picture.

Mr Horton also informed the committee that:

- Rural crashes accounted for more than half of road fatalities in the borough and there had been a surge in accidents on the A274 in Headcorn recently;
- Motorcycle accidents were up with the majority involving younger people in urban settings;
- Single vehicle accidents accounted for more than half of accidents and were mostly in rural settings;
- 20 mile per hour zones can have a calming effect on traffic and more of them may start to appear.

**RESOLVED:** that the update from the Priority Sub-Group on Road Safety be noted.

37. DURATION OF THE MEETING

18:30 to 20:30pm

# Agenda Item 8

## **MAIDSTONE BOROUGH COUNCIL**

### **COMMUNITY, ENVIRONMENT AND HOUSING OVERVIEW AND SCRUTINY COMMITTEE (ACTING AS THE CRIME AND DISORDER OVERVIEW AND SCRUTINY COMMITTEE)**

**FEBRUARY 2015**

#### **REPORT OF THE HEAD OF HOUSING AND COMMUNITY SERVICES**

**Report prepared by Sarah Robson**

**Date Issued: February 2015**

#### **1. Maidstone Community Safety Partnership Plan 2013 - 2018**

##### 1.1 Issue for Consideration

1.1.1 To note the process by which the Safer Maidstone Partnership produces its annual Community Safety Partnership rolling plan, which is informed by an annual Strategic Assessment.

##### 1.2 Recommendation of the Head of Housing and Community Services

1.2.1 That the Committee note the process and timetable by which the Safer Maidstone Partnership produces its annual Community Safety Partnership Plan and agree a date for the draft documentation to be presented to Corporate Leadership Team, Cabinet and finally full Council by April 2015.

##### 1.3 Reasons for Recommendation

1.3.1 The Community Safety Partnership Plan 2013-2018 is refreshed annually and forms part of the Council's Policy Framework Documents.

1.3.2 The previous year's Plan was endorsed by full Council last year and again, this year, will follow the appropriate authorisation channels, including presentations to Overview and Scrutiny, Corporate Leadership Team, Cabinet and finally full Council in April 2015.

1.3.3 As the Plan focuses on the role of one unit within the council, there is an argument that consultation with partners or the public isn't strictly necessary. However, as a partnership plan, it will contribute towards the Council's statutory requirement to reduce crime under Section 17 Crime & Disorder Act and will have a high profile. The Plan is an enabling one, co-ordinating the work of a range of partners to benefit residents and businesses and as such it is essential that partners have

the opportunity to understand and comment on the approach being developed by the Council and its partners. Finally, it is essential that the public has the opportunity to consider and comment on the approach being promoted by the Council as they are the key partners and beneficiaries of the work of the team.

1.4 Impact on Corporate Objectives

1.4.1 The Community Safety Partnership Plan will contribute to the delivery of the Strategic Plan priorities; For Maidstone to be a decent place to live and Corporate and Customer Excellence. In addition, the Community Safety Partnership Plan supports the delivery of two out of three cross cutting objectives within the Borough Council’s Community Development Strategy; Tackling Disadvantage and Building Stronger Communities.

1.5 Risk Management

1.5.1 Risks associated with delivery against the strategic priorities within the Plan will be managed by the Safer Maidstone Partnership and the individual agencies that make up the partnership.

1.6 Other Implications

1.6.1

1.	Financial	X
2.	Staffing	X
3.	Legal	X
4.	Equality Impact Needs Assessment	X
5.	Environmental/Sustainable Development	
6.	Community Safety	X
7.	Human Rights Act	
8.	Procurement	
9.	Asset Management	

1.6.2 Financial – From 2013-14, all Community Safety Grant funding is allocated directly to the Police and Crime Commissioner (PCC) who uses this money to target her identified priorities and support the ongoing delivery of the Crime Plans. Having evidenced and

demonstrated its ongoing successes, Maidstone Borough Council attracted PCC funding of £38,449, calculated on a population basis, for 2014-15, which will be continue in the new financial year. However, the plans and strategies detailed within the plan cover a wide range of services provided by the Council and partner agencies with the majority of activity being either mainstream funded or funded via other grants or allocations not directly allocated to community safety.

1.6.3 Staffing – The priorities within the Plan cross cut the agencies that make up the Safer Maidstone Partnership. Delivery against the priorities will be via mainstream activity and any grant funding that the borough is able to secure, including this year’s Community Safety Grant allocation.

1.6.4 Legal – Sections 5 to 7 of the Crime and Disorder Act 1998 (the 1998 Act), headed “Crime and Disorder Strategies”, require “responsible authorities” to comply with section 6 of the 1998 Act which states that “responsible authorities” shall formulate and implement;

- a) A strategy for the reduction of crime and disorder in the area; and
- b) A strategy for combating the misuse of drugs, alcohol and other substances in the area; and
- c) A strategy for the reduction of re-offending in the area.

By virtue of section 5(1)(a) of the 1998 Act, the Council is the “responsible authority”.

By completing an annual refresh of the Community Safety Plan based on the findings of a comprehensive Strategic Assessment, Maidstone is fulfilling its statutory requirement.

There are reputational, environmental, economical and legal risks to the Council for not pro-actively pursuing an improvement in crime and disorder levels. The recommendations in this report recognise the importance of constructive dialogue with the partner organisations comprising the Community Safety Partnership and also the importance of coordinated and collaborative working.

<b>Risk</b>	<b>Description</b>	<b>Action to avoid or mitigate risk</b>
National and local publicity.	Could affect the public perception of crime and therefore impact upon performance in these key areas.	Ensure that we take all available opportunities to publicise good news stories.
Decreased Agency “buy in”.	Changes in leadership, staffing or	Ensure that agencies are aware of the impact

	resources could reduce the involvement of key agencies.	of dis- engagement upon their own service delivery/performance.  Ensure that strategic members of the Community Safety Partnership are made aware of any situation as it arises.
A wide range of CSP (Community Safety Partnership) objectives.	Means that the CSP may be spread too thin and not have the resources to deal with all aspects so there may be gaps in service.	Prioritisation based on Strategic Assessment.
Legislation	Government guidance could change focus for CSP.	CSP to maintain strong communication with LGA/Home Office in order anticipate changes.
Police and Crime Commissioner (PCC) plans.	In order to develop their plans the PCC must consult the public, in particular victims. The plan must also be scrutinised by the police and crime panel before it is issued, although there is no set timetable for this. 31 March is the deadline for PCCs to issue their police and crime plans.	Continued engagement with the PCC.

1.6.5 Equality implications – The benefits of delivery against the plan will apply across the Maidstone borough, although by adopting an evidence based approach more benefit should be felt in areas where identified problems are greatest.

1.6.6 Community Safety – The Community Safety team has been brought under the reporting line of the Community Partnerships unit, with a reduced number of staff. The focus will be strongly on preventative work while continuing to be co-located and working closely in

partnership with the police and other community safety related partners.

1.7 Conclusions

1.7.1 The refreshed Community Safety Partnership Plan 2013-2018 reflects the key priorities for Maidstone borough.

1.8 Relevant Documents

1.8.1 Appendices

Att 1 – Community Safety Partnership Plan 2013-18 (refreshed 2015)

Att 2 – Strategic Assessment (annual refresh)

1.8.2 Background Documents

**IS THIS A KEY DECISION REPORT?**

Yes  No

If yes, when did it first appear in the Forward Plan?

.....

This is a Key Decision because:

.....

Wards/Parishes affected: ...All wards and parishes.....

.....

**How to Comment**

Should you have any comments on the issue that is being considered please contact either the relevant Officer or the Member of the Executive who will be taking the decision.

Cllr John Perry

Cabinet Member for Community Services  
Telephone: 07770 734741  
E-mail: johnperry@maidstone.gov.uk

Sarah Robson

Community Partnerships Manager  
Telephone: 01622 602827  
E-mail: sarahrobson@maidstone.gov.uk



# **Safer Maidstone Partnership**

## **Community Safety Partnership Plan 2013–2018**

### **'Delivering Safer Communities'**

Refreshed February 2015

#### **1. Foreword**

- 1.1 Welcome to the annual refresh of the Safer Maidstone Partnership (SMP) Community Safety Partnership Plan for 2015-16, which outlines how we are going to collectively tackle community safety issues in the Maidstone borough. This Plan sets out our performance over the last 12 months, identifies priority areas for the next year and outlines what we are going to do to improve them.
- 1.2 In Maidstone, the overall pattern of increased volume of reported crime follows the trend identified for the six months April to September 2013 in last year's Plan. Victim-based crime over the last year (October 2013 to September 2014) has increased by 5.8%, which equates to 513 more offences being committed across the borough. This compares to a 7.8% increase in recorded victim-based crime across Kent (excluding Medway), and ranks Maidstone in 4th place out of 12 districts in crimes per 1,000 population. During 2013-14, the biggest increases were in reported incidents of assaults resulting in hospital admissions (+35.4%), violence against the person (+24.4%), domestic abuse incidents (+14.5%), number of repeat domestic abuse victims (+23.1%) and sexual offences (+20.9%).
- 1.3 Against this background of an overall increase in reported crime, certain crime categories experienced a fall in reported incidents, notably Anti-Social Behaviour which experienced a fall of 8.6%, this in addition to a fall the previous year of 9.6%. Other crime categories which experienced reductions during 2013-14 include Burglary Dwelling (-5.6%), Burglary Other (-6.4%), Drug Offences (-8.7%), Theft from a Motor Vehicle (-20.1%) and Metal Theft (-53.5%). Over the past three years 2011-12 to 2013-14 crime in Maidstone has risen from a low of 7,372 to 8,457 per year, although the caveats set out in paragraph must be noted. The Partnership has achieved this by delivering actions contained within last year's plan
- 1.4 Crime data collated for this year's Plan has been affected by changes to how crime is recorded. The Home Office Counting Rules for Recorded Crime were revised last year to address a lack of consistency in recording practices across police services. From 1 April 2013, the Home Office split 'All Crime' into 2 main groups: Victim-Based Crime and Crimes Against Society.



- 1.5 In 2013, the Police and Crime Commissioner for Kent commissioned Her Majesty's Inspectorate of Constabulary (HMIC) to conduct an inspection "to determine whether the people of Kent can have confidence in Kent Police's crime figures". As a result, recorded crime totals have been 'added back', resulting in increased crime levels in Kent since recording practices were revised. Published data is no longer compared to the same time period as the previous year, but instead compared against anticipated volumes which have been calculated using the seasonality of crimes during the past 5 year period.
- 1.6 The Kent Crime and Victimization Survey, a telephone survey of randomly selected households across Kent, has also been subject to change. The survey no longer reviews perceptions of crime and ASB, but instead asks how well Kent Police has responded and measures public confidence in the Police and Criminal Justice System.
- 1.7 Data analysis however identifies that we continue to face challenges across our district. The Plan is informed by a Strategic Assessment that looks at current data and trends to identify the priorities for the Borough in reducing and tackling crime and disorder. This year the SMP has agreed to focus on five key issues and these are:
- Antisocial Behaviour
  - Reducing Re-offending
  - Road Safety (killed or seriously injured)
  - Substance Misuse
  - Violent Crime - domestic abuse
  - Violent Crime - night-time economy
- 1.8 Additionally the strategic assessment process has identified four subsidiary priorities:
- Safeguarding, educating and engaging young people
  - Hoarding and Self Neglect
  - Legal Highs
  - Victim Support and Restorative Justice
- 1.9 Each priority is led by an agency which is responsible for championing positive outcomes based on an agreed action plan. The plans are included in this document (see Action Plan). We are working to ensure that the SMP adds value to the crime and disorder agenda, improving engagement of partners and how they contribute to the priority outcomes agreed for the partnership.

## **2. Background and Context**

- 2.1 The Crime and Disorder Act 1998, changed the way crime and antisocial behaviour was to be tackled, as it recognised that in order to be effective, agencies needed to work together to address the issues collectively. Each local area formed a Crime and Disorder Reduction Partnership (CDRP) which are now called Community Safety Partnerships.
- 2.2 The Safer Maidstone Partnership is made up of Responsible Authorities (those bodies for whom membership of the CSP is a statutory obligation) and voluntary members. Our statutory partners are: Maidstone Borough Council, Kent County Council, Kent Police, Kent Fire and Rescue Service, Probation services and the Clinical Commissioning Groups (which have the responsibility for health services locally). We also work with a large number of public and private sector partners as well as voluntary and community groups to collectively implement and deliver initiatives that will help all areas of the Maidstone borough become a safe place to live, work and visit.
- 2.3 The Maidstone Community Safety Plan 2013-18 is a rolling five year document, which highlights how the CSP plans to tackle community safety issues that matter to the local community. This plan is revised annually through reviewing information provided from a wide range of organisations in a strategic assessment, to ensure that current issues can be taken into account into the activities undertaken by the CSP. The Plan seeks to promote a more holistic approach, with a greater emphasis on prevention and harm reduction. For example, the harm done by alcohol has far reaching consequences that go beyond potential disorder and violence in the night-time economy; the implications for health and wellbeing have also to be taken into account; with their longer term implications.

## **3. Organisational changes – a local overview**

### **3.1 Safer Maidstone Partnership (SMP)**

The SMP brings together people from local government, the NHS, the police, the fire service, probation, local businesses, housing providers and voluntary and community organisations to work as a team to tackle issues such as crime, education, health, housing, unemployment and the environment in Maidstone Borough. SMP membership is made up of the public sector agencies including Kent County Council, Maidstone Borough Council, Kent Police, Office of the Kent Police and Crime Commissioner, NHS Health Trusts, Kent Fire and Rescue Service and Probation services and also incorporates members from other key partners including Maidstone Mediation, CRI, Golding Homes and Town Centre Management. The SMP is currently chaired by Alison Broom, Chief Executive of Maidstone Borough Council.

### **3.2 Community Safety Unit**

The Maidstone Community Safety Unit (CSU) continues to grow. In recent years, existing Borough Council and Kent Police staff have been joined by partners from Kent Community Wardens, Trading Standards and local housing Registered Providers, such as Golding Homes. In 2014, the Borough Council's licensing team relocated to the CSU. Increasing the

range of partners working as part of the CSU is a key priority to ensure community safety related issues are tackled holistically.

### **3.3 Kent Police**

Three policing divisions, **East**, **West** and **North** ensure local policing is at the heart of the new Policing model and there has been a significant increase in neighbourhood constables and sergeants to provide strong local leadership across the county. In line with Central Government's cycle of budget reviews, Kent Police's next Comprehensive Spending Review is due to take place in 2015 and will see budgets reduced further, supported by a focus to commit to maximising the number of officers in frontline roles and continuous improvement through innovation and technology.

### **3.4 Kent Police and Crime Commissioner (PCC)**

PCC's are responsible for the appointment of Chief Constables, holding them to account for the running of the force, setting out a Police and Crime Plan based on local priorities, setting the local precept and force budget and making grants to external organisations. The current PCC for Kent, Ann Barnes, was appointed in November 2012 and will remain in office for a period of four years.

The PCC has pledged to continue to support a number of agencies through the main policing grant and has announced her commitment to her wider duties around crime and community safety. Funding for Community Safety Partnerships has been confirmed for 2015/16 and will be used to address our local priorities. The PCC has announced that there will be no in year targets and that there will be a focus on encouraging sustainable improvements in performance.

The Kent Police & Crime Plan is a four year plan from 1 April 2013 to 31 March 2017 and is refreshed annually. The plan sets out the Commissioner's vision and priorities for policing in the county which includes placing victims first, focusing on reducing crime and anti-social behaviour and protecting the public from harm. To achieve the aims set out in the plan the following strategic priorities are set out:

- Cutting crime & catching criminals
- Ensuring visible community policing is at the heart of Kent's Policing model
- Putting victims and witnesses first
- Protecting the public from serious harm
- Meeting national commitments for policing
- Delivering value for money

The plan also references a commitment to working closely with community safety and criminal justice agencies across the county to ensure that a seamless service is provided to victims of crime and anti-social behaviour, with a particular focus on:

- Tackling the root causes of crime and anti-social behaviour
- Reducing re-offending and repeat victimisation
- Improving joined up working between agencies

### **3.5 New powers to deal with Antisocial Behaviour (ASB)**

The Antisocial Behaviour, Crime and Policing Act 2014 came into force in

September 2014. The Act brings a number of changes to the tools and powers available to organisations, agencies and practitioners who tackle Anti-Social Behaviour. The overarching aim of the Act is to provide more effective powers to tackle anti-social behaviour (ASB), protect victims and communities and treat the underlying behaviour of perpetrators. The intended practical effect of the Act is to:

- Give victims and communities more power to define and respond to ASB, and impose positive requirements on perpetrators to address the causes of their behaviour.
- The Act also focuses on giving better witness satisfaction and making agencies more accountable to witnesses and communities when they fail to act.

The Act replaces 19 existing powers dealing with anti-social behaviour with 6 broader powers, streamlining procedures to allow a quicker response to ASB. The table below summarises the changes:

<b>Tools with People</b>	
<b>Existing</b>	<b>To be replaced by</b>
ASBO	Criminal Behaviour Order
ASBO on conviction	
Drink Banning Order	
Drink Banning Order on Conviction	Injunction
ASB Injunction	
Individual Support Order	
Intervention Order	
<b>Tools for Places</b>	
<b>Existing</b>	<b>To be replaced by</b>
Litter Clearing Notice	Community Protection Notice
Street Litter Clearing Notice	
Graffiti/Defacement Removal Notice	
Designated Public Places Order	Public Spaces Protection Order
Gating Order	
Dog Control Order	
Premises Closure Order	
Crack House Closure Order	Closure of Premises
Noisy Premises Closure Order	
s161 Closure Order	
<b>Police Powers</b>	
<b>Existing</b>	<b>To be replaced by</b>
s30 Dispersal Order	Dispersal Powers
s27 Direction to Leave	

The Act has also made available two new measures to make agencies more accountable to witnesses and communities when agencies fail to act, and to give victims better outcomes:

- The 'Community Trigger' which will impose a duty on the statutory partners in a Community Safety Partnership (CSP) to take action in cases where victims or communities have complained about ASB on a number of occasions or when a number of people report the same ASB and it is perceived that local agencies have failed to respond.
- A 'Community Remedy' which uses a restorative justice approach to deal with low level crime and antisocial behaviour.

The Government has placed a significant focus on tackling the 'Troubled Families' agenda. The Department of Communities and Local Government (DCLG) defines a troubled family as one that has multiple and complex needs, including parents not working and children not in school, and causes serious problems, such as youth crime and anti-social behaviour. Any family that meets the first three criteria (crime/anti-social behaviour, education and work) will automatically be part of the programme (there is also a fourth filter, 'local discretion' – in Maidstone the additional criteria is domestic abuse and substance misuse). The programme involves:

- Getting children back into school
- Reducing youth crime and anti-social behaviour
- Putting adults on a path back to work
- Reducing the estimated £9 billion these families cost the public sector each year

The Maidstone Troubled Families programme has been named 'Maidstone Families Matter' and is being led through a Locality Programme Manager, with dedicated Family Intervention Project Managers being provided through KCA.

### **3.7 West Kent Clinical Commissioning Group**

Since 1 April 2013, Clinical Commissioning Groups (CCG's) have become 'responsible authorities' on CSP's. Schedule 5, Paragraph 84 of the Health and Social Care Act 2012 replaces primary care trusts with clinical commissioning groups as responsible authorities on CSP's from April 2013. This means that the CCG's now have a statutory responsibility to work in partnership with other responsible authorities to tackle crime and disorder. The act places a duty on CCG's to:

- Participate in a strategic assessment of crime and disorder, anti social behaviour, and drug and alcohol misuse for the CSP area or areas in which they fall.
- Contribute to the development of local strategies that effectively deal with the issues identified.

Joining their local CSP's gives CCG's more influence in shaping local action to tackle crime and the causes of crime, for example the delivery of action on drugs, alcohol, crime and disorder.

### **3.8 Health and Wellbeing Board**

The West Kent Health and Wellbeing Board brings together key organisations and representatives of the public to work together to improve the health and wellbeing of the people of West Kent. It has been set up in West Kent as part of the recent national health and social care reforms. Kent Public Health alongside the four West Kent authorities (Maidstone Borough Council, Sevenoaks District Council, Tonbridge and Malling Borough Council and Tunbridge Wells Borough Council), West Kent Clinical Commissioning Group, (who are responsible under the reforms for commissioning health services locally) and patient and public representatives are all part of this Board. The key themes for health and wellbeing are drawn from the West Kent Joint Strategic Needs Assessment.

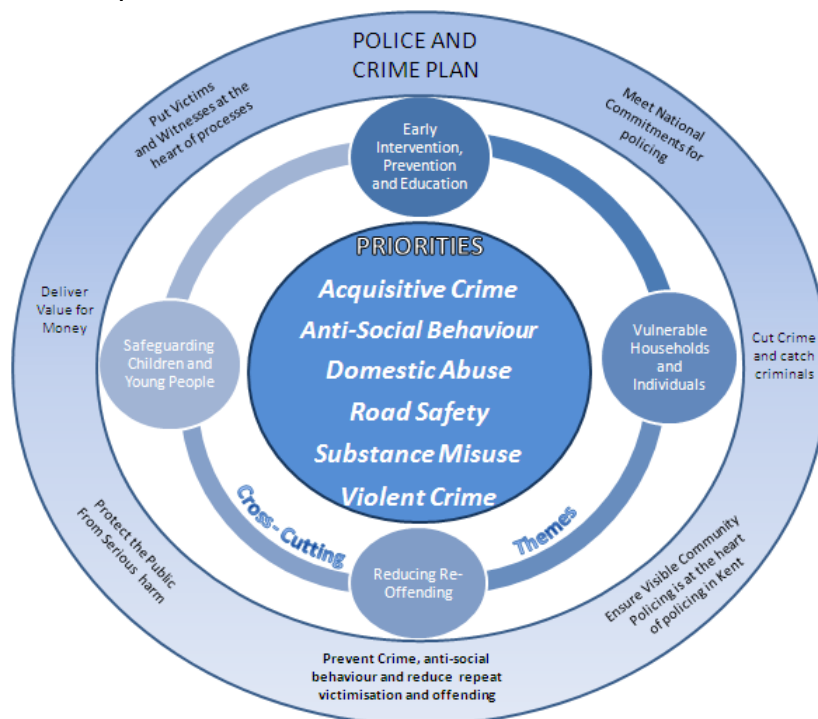
### 3.9 Probation Services

Throughout 2014, the Ministry of Justice has been working with Probation Trusts to prepare for the implementation of new structures under the Transforming Rehabilitation Programme. The programme sees the creation of a new National Probation Service (NPS) working with high risk offenders and 21 Community Rehabilitation Companies (CRCs) managing medium and low risk offenders. The preferred bidder for the Kent, Surrey and Sussex CRC has been announced as Seetec Business Technology Centre. The Transforming Rehabilitation reforms include a number of sentencing changes, which may impact on CSP re-offending data in the future. The changes that have been enacted in the Offender Rehabilitation Act 2014 include most importantly, the extension of supervision of Licence after release to all offenders who receive a custodial sentence of less than 12 months; extending probation supervision to the 50,000 offenders sentenced each year to less than 12 months. This is a cohort of offenders with whom Probation Trusts have never worked with, as this cohort of offenders has never before been subject to statutory supervision.

## 4. The Kent County Perspective

4.1 The Community Safety Agreement (CSA) for 2014-17 outlines the key community safety priorities for Kent and replaces the previous agreement which expired on 31<sup>st</sup> March 2014. Data analysis, partnership consultation and examination of the most recent local strategic assessments indicated that the priorities and most of the cross-cutting themes identified in the 2011-14 Agreement should remain, and would continue to benefit from support at a county level.

The common issues and priorities from the District-level strategic assessments have been identified and key stakeholders consulted to identify any potential gaps and cross-cutting themes for inclusion in the agreement. Thus, the diagram below not only includes the priorities and cross-cutting themes for the CSA but also shows the strategic priorities set out in the Police and Crime Plan, illustrating the importance of integrating the work of all partners:



## 5. 2015 Strategic Assessment summary

- 5.1 Each year the Safer Maidstone Partnership has to produce a Strategic Assessment of the district to identify any crime and disorder trends, which can then be used to inform the priority planning for the coming year. It basically ensures we are focusing our efforts collectively on the areas that are most in need. This is done by analysing data and intelligence reports from the previous year, which is usually 1 October 2013 to 30 September 2014 to produce recommended priority areas the data is telling us are a concern or that residents have highlighted.
- 5.2 The priorities are then compared with other areas and ranked against a number of factors, including volume, trend over time, resident's perception and how much it is felt the partnership can influence. This is then reviewed by our stakeholders and finally the top ranked priorities are analysed in depth, to help guide practitioners in formulating actions that they feel will have an impact on each priority. The following areas were identified by this process and recommended as emerging priorities for the 2015-16 Partnership Plan:

### 5.3 **Anti-Social Behaviour**

ASB has continued to decrease. Over the last three years there has been a decrease in the number of reports of ASB by just over 25%. However, Maidstone still has the 5th highest number of reported incidents in the County (after Thanet, Canterbury, Swale and Dover). Analysis of ASB including environmental nuisances across Maidstone, highlights that High Street, Fant, Park Wood, North and Shepway North wards experienced the highest volumes.

**Due to the high volumes of anti-social behaviour in parts of the borough, and the impact ASB has on residents, recommendation is made that ASB continues as a priority for the Partnership.**

*Current projects:*

- Identified repeat and vulnerable victims through the Weekly Partnership ASB Briefing.
- Sought ASB/Injunction orders where appropriate.
- 14 action days have been held with multiple agencies visiting targeted areas as part of Operation Civic.
- Provided community based outreach in conjunction with Switch.
- Engaged young people in projects, such as Zeroth Gym and Challenger Troop.
- Identified NEET's (Not in Education, Employment or Training) and referred them to Maidstone Engage programme.
- Engaged young people via the Power Project (YISP).
- Identified troubled families and referred to the Maidstone Families Matter programme.
- Worked with partners to maximise environmental protection.
- Carried out targeted substance misuse work with offenders.

### 5.4 **Substance Misuse – including alcohol and Lethal ('legal') Highs**

Overall drug offences have reduced 8.7% or 41 incidents, but are still 20% higher than the level of three years ago. There are no identified seasonal trends. For alcohol related conditions, Maidstone is ranked 10th out of the 12 districts for hospital admissions due to alcohol in the county, and has

the 9th worst rate of alcohol related deaths. Alcohol drives much crime. In Maidstone nearly 800 crimes were recorded as directly alcohol related in 2012/13, out of a total of 8,457 victim based crimes (9.5%).

New Psychoactive Substances (NPS), or legal highs, are substances designed to produce similar effects to controlled drugs, such as cannabis, cocaine or ecstasy, but are structured differently in an attempt to avoid being controlled by the Misuse of Drugs Act 1971. Legal highs are not safe. In England in 2012 some 68 deaths were linked to legal highs. NPS use in Maidstone is on the increase, driven by the number of highly visible retail legal high outlets. In fact, Kent has more 'head shops' than anywhere outside of London, and Maidstone more than anywhere else in Kent. In addition, NPS users tend to be those who are more vulnerable.

**Due to the high level of drug offences in certain wards, and the increasing prevalence of New Psychoactive Substances (NPS), recommendation is made that substance misuse including alcohol and NPS remains as a priority.**

#### *Current projects*

- Targeted multi-agency evening operations have been delivered with Trading Standards, Kent Police and Borough Council teams to tackle underage sales and licensed premises as a result a premises license has subsequently been reviewed and information gathered on a number of other premises.
- Partners launched a Legal Highs awareness campaign aligned with national campaigns.
- Over 1,800 young people attended 'SNAP' disco, where targeted messages were delivered regarding the misuse of drugs and alcohol.
- All Maidstone-based secondary schools and one PRU engaged in the Don't Abuse the Booze programme.
- Increased number of street population referred and engaged in CRI support services as a result the Maidstone Assertive Outreach programme.
- Service provision provided by CRI has been integrated into the partnership. Outreach workers have delivered additional sessions to engage with hard to reach individuals (e.g. street population) misusing substances.

### **5.5 Reducing Reoffending**

Reducing re-offending across the age range is a Government target for all CSP's. This is particularly important when those who have already been through the criminal justice system commit over half of all crime. It will enable a more strategic engagement between CSP's and other local partners, such as the third sector and Local Criminal Justice Boards, in planning and commissioning services for offenders. Maidstone data shows that in the period 1 January to 31 December 2013 the actual re-offending rate was 1.40% higher than the predicted re-offending rate, which is the 4th best among Kent districts. As at 31 May Maidstone has the 4th highest caseload (348), or some 10.2% of the total Kent caseload.

**The actual re-offending rate has fallen from the 2nd lowest to the 3rd lowest in Kent, so recommendation is made that Reducing Re-offending remains as a priority, being a cross cutting theme across all priorities.**



#### *Current projects*

- A steering group was established involving all key agencies to provide strategic direction to the Integrated Offender Management (IOM) and Deter Young Offenders (DYO) groups.
- Restorative Justice has become an embedded process within IOM. All offender managers have been briefed in relation to the process and benefits of these approaches.
- Community Payback scheme used by Maidstone Borough Council and some parish councils.
- Electronic 'Buddy' tracking is being piloted in partnership between Kent Police and Probation. At present this can only be undertaken with the agreement of the offender.
- Yes Plus and Challenger Troop commissioned to provide diversionary and personal development programmes at Kings Reach Pupil Referral Unit (PRU).

### **5.6 Road Safety (killed or seriously injured - KSI)**

Based on the current data for 2013/14, Maidstone has seen a 3.1% increase in all casualties compared with Kent-wide increase of 9%, and a 40.7% increase in KSI casualties against the same period last year, compared to a Kent-wide KSI increase of 26.3%. However, although KSI casualties for under-16 yrs have decreased, Maidstone continues to experience the most road casualties in Kent.

The focus on the year has been on three user groups, young drivers aged 17-24, powered two-wheelers (p2w) riders, and teenage pedestrians (secondary school age).

**Due to killed and seriously injured figures increasing faster against the county wide increase, recommendation is made that Road Safety remains as a priority.**

#### *Current projects:*

- Identified hotspots of concern.
- Identified repeat offenders for speeding and promoted Speedwatch.
- Held multi-agency events around speed enforcement and safety.
- Delivered Safety in Action programme to all primary school children transitioning to secondary school, providing road safety education and pedestrian awareness.
- Promoted walking buses and 20MPH zones around schools.
- Promoted bus safety driver and pedestrian awareness.
- Signposted to bicycle and marking events.

### **5.7 Violent Crime (domestic abuse)**

Incidents of domestic abuse have increased in Maidstone borough by 14.5% or 258 incidents, compared to a county-wide increase of 11.6%. Per 1,000 population, Maidstone has the 5th lowest rate of domestic abuse incidents and 5th lowest percentage of repeat victims in the county. Of the total reports, 25.1% are repeat incidents.

It is widely recognized that increased recorded incidents of domestic abuse are not necessary indicators of a worsening situation. Domestic abuse is an under-reported crime so that increased reports indicate that DA victims are coming forward to report the abuse they are suffering. Further

analysis of local postcode data, the highest volumes or hotspots can be seen primarily in the Park Wood, Shepway North, High Street, East and Fant wards.

**Due to the high levels of domestic abuse and repeat incidents, recommendation is made that Violent Crime (domestic abuse) remains as a priority for the partnership, focusing on those areas with frequent reports of domestic abuse.**

*Current projects:*

- Partners have continued to run regular seasonal awareness campaigns aligned with national campaigns.
- Work Place Health employee awareness campaign launched.
- Supported the Freedom programme and Independent Domestic Violence Advisor (IDVA) service.  
Facilitated support for Specialist Domestic Violence Court workers.
- Promoted and supported the Community Domestic Abuse Programme (CDAP).
- Referred all High Risk cases to Multi-Agency Risk Assessment Conference (MARAC).
- Provided support to male and female victims of DA through Choices
- Promoted the DA Schools Project (SAFE).
- Provided support for male offenders wishing to rehabilitate.
- Helped facilitate the Sanctuary Scheme.
- Increased referrals for domestic abuse victims who are street homeless.
- Assisted in providing a domestic abuse One Stop Shop in the borough.

## **5.8 Violent Crime (night-time economy)**

Violent crime covers a wide range of crimes, from assault by beating through to grievous bodily harm, and murder, but please note, the crime types which have been most affected by changes to recording practices are violence related offences, including Assault and Violence Against the Person (VAP). This has resulted in significant number of crimes added back during the year, which means that it is not safe to directly compare the current year with previous years.

Given the changes in crime recording, the real increase in violent crime is estimated to be between 4 to 8%, rather than the actual year on year increase of 23% the data now indicates. A county-wide comparison shows Maidstone is middle ranked (6th) for violent crime per 1,000 population, and 4th amongst our West-Kent neighbours. In terms of the absolute number of violent crimes recorded, Maidstone's total of 2,612 is surpassed only by Swale (2,657) and Thanet (3,750).

Looking at hospital admission for related to violent crimes, Maidstone Hospital recorded 65 admissions of Maidstone residents, for assault in 2013/14, compared to 48 the year before. Approximately 85% of all admissions to Maidstone Hospital were male and 15% female. Of those recorded, the majority of males reported to have been assaulted in the street, bar/pub or at school / college, where as the majority of females reported to have been assaulted in the street or at home.

Looking specifically at violence against the person offences, in the period October 2013 to September 2014, crimes in this category have seen a

county-wide increase of 30.9% (5,468 additional offences), but note the crime recording caveat above. In Maidstone, violence against the person increased from 1,889 offences in 2012/13 to 2,349 offences in 2013/14 (+24.4%). This rate of increase is below the county increase and shows a peak during the summer months. Maidstone is ranked 6th in the county, the same ranking as 2012/13.

At ward level, in the 12 month period January to December 2014, High Street ward experienced the highest number of violent crimes in the County (574), an increase of 10.6% from the previous year, and 28% of all violent crime in Maidstone. Other wards with high levels of violent crime include Park Wood, Fant and Shepway North.

Partners have continued to crack down firmly on violence especially in Maidstone town centre with successful initiatives such as the purple flag scheme. However, we are conscious that the violent crime category has shown increases, notably violence against the person from alcohol and drug related violence as part of the night time economy.

**Due to the continuing rise in violent crime in the night-time economy, recommendation is made for drug and alcohol related violence in the night time economy to remain a priority for the partnership.**

*Current projects*

- In conjunction with Pubwatch, excluded violent individuals from the Town Centre premises.
- Shared information proactively from CCTV control room and Kent Police via MaidSafe network radios provided to door staff of key premises.
- Supported the town centre Street Pastors initiative.
- Used CCTV to protect and prevent crime.
- Enforced Alcohol Control Zones.
- Supported the county-wide Hate Crime Reporting Line.
- Provided school based work (Don't Abuse the Booze project) with high risk individuals around violence and drugs.

**5.9 Cross Cutting Themes**

Data analysis also acknowledged that the priorities are often inter-related and has identified three distinct cross cutting themes that run through all of the priority focus areas. Actions contained within this plan are therefore built around the five identified priorities and three cross cutting themes, as shown in the chart below:

Cross cutting themes				
Antisocial Behaviour	Domestic Abuse	Violent Crime	Road safety (KSI)	Substance Misuse (including alcohol)
Targeting prolific offenders / repeat locations				
Safeguarding vulnerable and young people				
Prevention and early intervention				

### 5.10 **How we are going to tackle these issues**

The CSP has created an action plan detailing how each priority will be addressed, which is shown in the action plan (see section 7). These activities range from revising current processes to ensuring that services are delivered as effectively as possible, creating value for money and also commissioning new services and projects in areas of need. The CSP is committed to achieving these priorities and has set targets against what we are planning to achieve, shown in item 8.

### 5.11 **Priority leads**

Lead officers for each of the priorities have been identified as set out below and have the responsibility for developing and delivering, with partners, the action plans to deliver the Maidstone borough priorities.

The leads will also act as a champion for the designated priority and provide regular progress updates for the Safer Maidstone Partnership and the borough council's Overview and Scrutiny Committee (moving to a Committee system from 1 April 2015) as required.

<b>Priority sub-groups</b>	<b>Lead Officer/Agency</b>
<b>Antisocial behaviour</b>	Inspector Jody Gagan-Cook, Kent Police
<b>Substance misuse</b>	Mark Gilbert, Kent Commissioning Team
<b>Reducing re-offending</b>	John Littlemore, Maidstone Borough Council
<b>Road safety (killed or seriously injured)</b>	Stephen Horton, Kent Road Safety Team
<b>Violent Crime (domestic abuse)</b>	Ian Park, Maidstone Domestic Violence Forum
<b>Violent Crime (night- time economy)</b>	Inspector Jody Gagan-Cook, Kent Police

## 6. Maidstone Community Safety Partnership Action Plan and Targets

The Action Plan sets out a series of actions and performance targets through which the priorities supporting the CSP Plan will be delivered for the period 2013–2018. The Action Plan makes clear arguments for building stronger and safer communities in Maidstone, with the actions identified against each priority supporting the overarching aim to reduce crime and disorder and its impacts. The plan will be reviewed annually to allow for new projects and priorities to be added.

### Priority 1: Antisocial behavior

Aim	Action	Anticipated Outcomes		Lead Agency
<p><b>To work in partnership to reduce incidents of ASB towards repeat or vulnerable victims / locations, targeting rowdy nuisance behaviour, fly-tipping and noise.</b></p> <p><b>To reduce the perception of the local community that believe ASB is a large problem in their local area, with emphasis on noisy neighbours and increase the satisfaction of those that we deal with.</b></p>	<p>Identification of ASB hotspots and multi-agency tasking through the weekly CSP Partnership Tasking and Action Group meeting and monthly ASB meeting.</p> <p>Promote the Community Trigger, ensuring an effective customer response to incidents of ASB (contact, treatment, actions and follow up)</p>	<p>Reduction in reported ASB across the borough. Quicker targeted response to priorities for CSP.</p> <p>Reduced percentage of community who consider there is a high level of ASB. Increased awareness of work undertaken to tackle ASB. Increase in customer satisfaction</p>		<p>Maidstone Community Safety Unit (CSU)</p> <p>Maidstone CSU</p>
		<p><b>Baseline 1 Oct 2013 to 30 Sept 2014</b></p>	<p><b>Kent-wide comparison</b></p>	<p><b>Target (by 2018)</b></p>
<p>ASB incidents per 1,000 population</p>		<p>23.39</p>	<p>27.39</p>	<p>Reduce to average of best 4 Kent Districts (19/1,000 population) in the Kent-wide comparison by 2018</p>

**Priority 2: Reducing reoffending**

<b>Aim</b>	<b>Action</b>	<b>Anticipated Outcomes</b>		<b>Lead Agency</b>
<p><b>To work to embed the responsibility of reducing re-offending across all agencies for all age groups, including awareness raising of existing services and activities. Work will be targeted around known reasons for people to offend, included education, training and employment as well as addressing housing needs.</b></p>	<p>Undertake awareness raising activities to highlight statutory agencies responsibilities to tackle reducing re-offending and to raise awareness of existing work to tackle offending.</p> <p>Support the development of a transition pathway for short term prisoners.</p> <p>Support the transition pathway for prisoners on release into suitable accommodation.</p> <p>Support young people from re-offending within 6 months of their intervention and divert young people into suitable diversionary programmes.</p>	<p>Reduced re-offending across all groups.</p> <p>Increased number of project suggestions for unpaid work schemes through Probation, YOS and HMPS.</p> <p>Reduced number of offenders registered as homeless, unemployed, with mental and physical health problems or financial problems.</p> <p>Increase the proportion of offenders in suitable accommodation at termination. Reduce number of offenders</p> <p>Reduce percentage of YOT cohort that re-offend</p>		<p>SMP Reducing Re-offending sub-group</p> <p>SMP Reducing Re-offending sub-group</p> <p>CRC</p> <p>Maidstone IOM group</p>
<b>Indicator</b>		<b>Baseline 1 Oct 2013 to 30 Sept 2014</b>	<b>Kent-wide comparison</b>	<b>Target (by 2018)</b>
Offending population as a % of the total population aged 10-17 yrs		0.7%	0.98%	Maintain under KCC value
Proportion of adult and juvenile offenders who re-offend		7.8%	8.9%	Maintain under KCC value
Overall reoffending rate – % difference between the predicted and actual rates		Predicted = 7.86% Actual = 9.97% Diff= 1.4%	Predicted = 8.43% Actual = 8.94% Diff= 6.1%	Maintain % difference between actual and predicted to near zero

**Priority 3: Road safety - killed or seriously injured (KSI)**

<b>Aim</b>	<b>Action</b>	<b>Anticipated Outcomes</b>		<b>Lead Agency</b>
<p><b>To continue multi-agency work promoting road safety awareness to reduce the number of people killed or seriously injured on the roads.</b></p>	<p>Deliver road safety education programmes (e.g. RUSH, Car'n'age, Licensed to Kill) delivered in schools, colleges and community groups in the borough.</p>	<p>Reduced road fatalities and serious injury caused by young drivers and drivers of two-wheeled vehicles.</p>		<p>Kent Fire and Rescue Service</p>
	<p>Engage with Kent Public Health to promote driving under the influence (alcohol and drug awareness).</p>	<p>Reduced road fatalities and serious injury caused as a result of alcohol</p>		<p>Kent Road Safety team and Kent Public Health</p>
	<p>Develop a Pedestrian Awards Scheme (PAWS) for 4-14 year olds.</p>	<p>Demonstrable practical road safety knowledge and abilities</p>		<p>SMP Road Safety (KSI) sub-group</p>
<b>Indicator</b>		<b>Baseline 1 Oct 2013 to 30 Sept 2014</b>	<b>Kent-wide comparison</b>	<b>Target (by 2018)</b>
<p>Total casualties per 1,000 population – all ages</p>		<p>4.41</p>	<p>4.18</p>	<p>Reduce to KCC av.</p>
<p>Total casualties per 10,000 population – (under 16 yrs)</p>		<p>3.24</p>	<p>3.72</p>	<p>Reduce to KCC av.</p>
<p>Road users Killed or Seriously Injured per 10,000 pop – (all ages)</p>		<p>4.83</p>	<p>4.51</p>	<p>Reduce to KCC av.</p>
<p>Road users Killed or Seriously Injured per 10,000 pop – (under 16 yrs)</p>		<p>0.13</p>	<p>0.36</p>	<p>Maintain under KCC av.</p>
<p>Delivery of RUSH education programme to Year 11 students</p>		<p>3,000</p>	<p>Not applicable</p>	<p>RUSH delivered to 3,000 Year 11 students annually</p>

**Priority 4: Substance misuse**

<b>Aim</b>	<b>Action</b>	<b>Anticipated Outcomes</b>		<b>Lead Agency</b>
<p><b>To continue multi-agency work to reduce the impact of drug and alcohol misuse on individuals and the local community, including drunken behaviour, binge and underage drinking.</b></p>	<p>Support Kent Alcohol Strategy, developing local, targeted projects with young people.</p>	<p>Reduction in underage drinking across Maidstone. Raised young people’s awareness of the dangers of drugs and alcohol.</p>		<p>SMP Substance Misuse sub-group</p>
	<p>Assess needle finds and needle drop locations in Maidstone and develop a targeted partnership action plan to increase outreach support and services.</p>	<p>Reduce needle finds and increase use and provision of needle drop locations.</p>		<p>SMP Substance Misuse sub-group</p>
	<p>Implementation of multi-agency street outreach to support street population through CRI, GPs and other providers.</p>	<p>Increased referrals to targeted interventions against these individuals and reduce the impact on the community</p>		<p>SMP Substance Misuse sub-group</p>
	<p>Take direct action against Maidstone’s ‘head shops’</p>	<p>Fewer reports of ASB, fewer admissions to hospital</p>		<p>CSP and Trading Standards</p>
<b>Indicator</b>		<b>Baseline 1 Oct 2013 to 30 Sept 2014</b>	<b>Kent-wide comparison</b>	<b>Target (by 2018)</b>
<p>Number of drug offences per 1,000 population</p>		<p>2.74</p>	<p>2.02</p>	<p>2.38 (half the difference)</p>
<p>Alcohol related hospital admissions per 10,000 population</p>		<p>4.58</p>	<p>5.83</p>	<p>Maintain under KCC av</p>
<p>Number of discarded needles picked up</p>		<p>1,610</p>	<p>N/A</p>	<p>Reduce to 1,200pa</p>



**Priority 4: Violent Crime (domestic abuse)**

Aim	Action	Anticipated Outcomes		Lead Agency
<p><b>To work to reduce repeat victimisation of domestic abuse victims and to ensure effective services are in place to support and meet the needs of victims.</b></p>	<p>Support the delivery of the Maidstone Domestic Abuse Action Plan to support the CSP Plan.</p> <p>Support the Specialist Domestic Violence Court and the work of the Independent Domestic Violence Advisors.</p> <p>Continuation of the Multi-Agency Risk Assessment Conference (MARAC) in Maidstone.</p>	<p>Increased access to information for agencies, victims, families and friends; improvement of agency links to DV Forum; improved referral routes; improved awareness and access to services for adults, children and teenage victims.</p>	<p>Increased number of domestic abuse cases seen at Court.</p> <p>Increased referrals from wider range of agencies. Support to high risk victims of domestic abuse.</p>	<p>Maidstone Domestic Violence Forum</p> <p>HM Court Services</p> <p>Maidstone Domestic Violence Forum</p>
Indicator		Baseline 1 Oct 2013 to 30 Sept 2014	Kent-wide comparison	Target (by 2018)
Number of DA incidents per 1,000 population		16.08	18.19	Encourage reporting to match the Kent-wide comparison
% who are repeat victims		25.1%	25.2%	Maintain under the Kent-wide comparison
Number of visitors to DA One Stop Shop		97	1,835	Increase to 140
(a) Actual		6.17	12.40	Increase to 9/10,000 pop
(b) Per 10,000 population		18%	25%	Maintain current levels
% of repeat MARAC cases				

**Priority 5: Violent Crime (Night-Time Economy)**

32

<b>Aim</b>	<b>Action</b>	<b>Anticipated Outcomes</b>		<b>Lead Agency</b>
<p><b>To ensure Maidstone continues to be a safe place to socialise</b></p>	<p>Review police enforcement of the NTE</p>	<p>Targeted police resources to reduce impact on the local community and individuals as a result of alcohol misuse.</p>		<p>Kent Police</p>
	<p>Engage with the media to inform and educate visitors and business owners</p>	<p>Improved promotion of responsible drinking messages to members of the public and within licensed premises.</p>		<p>MBC/Kent Police/TCM</p>
	<p>Provide effective treatment for offenders whose offending is alcohol related</p>	<p>Increased referrals into CRI treatment services.</p>		<p>MBC Licensing/Trading Standards</p>
	<p>Directed operations and supervision to be undertaken to ensure that licensed premises are well run.</p>	<p>Reduced impact on the local community and individuals as a result of alcohol misuse. Reduced underage sales through licensed premises.</p>		<p>MBC Licensing</p>
	<p>Provide a reassuring presence in the night-time economy</p>	<p>Improved perceptions around safety in the night-time economy.</p>		<p>MBC Licensing/Trading Standards Urban Blue/Street Pastors</p>
	<p>Review the implementation of an Alcohol/Drug Test on Arrest scheme</p>	<p>Increased number of people accessing and completing treatment for substance misuse.</p>		<p>Kent Police/CRI</p>
<b>Indicator</b>		<b>Baseline 1 Oct 2013 to 30 Sept 2014</b>	<b>Kent-wide comparison</b>	<b>Target (by 2018)</b>
<p>Maidstone Hospital admissions (assault) per 10,000 population</p>		<p>4.13</p>	<p>3.59</p>	<p>3.86 (half the difference)</p>
<p>Violence against the Person per 1,000 population</p>		<p>14.93</p>	<p>15.66</p>	<p>Maintain under KCC av</p>

## 8. Prevent

8.1 The national Prevent Strategy has recently been updated to reflect the 'broader scope, tighter focus' approach that the Government wants to adopt within Prevent. In practice this means that whilst al-Qaeda remains the biggest threat to national security, and most effort will likely be directed towards the risk they pose, any groups or individuals that present a risk (of violent extremism or terrorism) should be dealt with proportionately, regardless of their motivation. The Strategy has three overriding objectives which are to:

- Respond to the ideological challenge of terrorism and the threat we face from those who promote it;
- Prevent people from being drawn into terrorism and ensure that they are given appropriate advice and support; and
- Work with sectors and institutions where there are risks of radicalisation which we need to address.

Maidstone CSP is a member of the Kent Prevent Steering Board which meets on a quarterly basis and sets the direction for Prevent activity across the county.

## 9. Consultation on Priorities and Partnership Plan

Maidstone has some clearly defined urban as well as rural areas, often with competing demands on resources and emphasis on what local priorities should be. Through the annual Strategic Assessment and future consultation events, stakeholders will be informed of progress against the Partnership Plan to ensure there are no other compelling issues that should be included in the Plan.

## 10. Further information

### **Maidstone Community Safety Unit**

Tel: 01634 602000

### **Maidstone Police Station**

Non-emergency Tel: 101

Emergency Tel: 999

### **Kent Fire and Rescue Service**

Tel: 01622 692121

### **One-Stop Shop**

Maidstone Gateway reception, Maidstone Borough Council, King Street, Maidstone, Kent ME15 6GY

Tel: 01622 761146

### **Domestic Abuse Hotline Domestic Abuse Support and Services in Kent**

Tel: 0808 2000247

[www.domesticabuseservices.org.uk](http://www.domesticabuseservices.org.uk)

### **Kent Hate Incident Reporting Line**

Tel: 0800 1381624

**Anti-Terrorist Hotline**

Tel: In confidence on 0800 789321

**Mental Health**

Kent and Medway NHS and Social Care Partnership Trust

Tel: 01622 724100

[www.kmpt.nhs.uk](http://www.kmpt.nhs.uk)

Maidstone Mind

Tel: 01622 692383

[www.maidstonemind.org](http://www.maidstonemind.org)

**Restorative Justice**

Maidstone Mediation

Tel: 01622 692843

Project Salus

Tel: 01303 817470

**Text service for the deaf or speech-impaired**

If you're deaf or speech-impaired, you can text Kent Police. Start the message with the word 'police' then leave a space and write your message including what and where the problem is. Send your text to 60066 (the Kent Police communications centre) and they will reply with a message.



Att 2: **Draft Strategic Assessment  
2015-16**

## **CONTENTS**

- 1. Executive Summary**
  - 1.1 Overview
  - 1.2 Key Facts
- 2. Introduction**
  - 2.1 The purpose of this Strategic Assessment
  - 2.2 The background to Strategic Assessments
  - 2.3 Maidstone Community Safety Partnership
  - 2.4 Partnership working in two tier areas
  - 2.5 Maidstone Community Safety Unit
  - 2.6 Maidstone Borough Council Policy Framework
  - 2.7 Safer Maidstone Partnership and Public Health
  - 2.8 Contributors to this Assessment
- 3. Maidstone Crime and Resolution Overview**
  - 3.1 Three year time series
  - 3.2 Crime resolution outcome analysis
- 4. Performance 2013-14: Progress on Current Priorities**
  - 4.1 Anti-Social Behaviour
  - 4.2 Violent crime - Domestic Abuse
  - 4.3 Violent crime – Night time economy
  - 4.4 Substance Misuse
  - 4.5 Road Safety – Killed & Seriously Injured 17-24 year olds
  - 4.6 Reducing Re-offending
- 5. Community Safety Priorities 2015-16 and Recommendations**
  - 5.1 Establishing local crime priorities
  - 5.2 National and local emerging issues
  - 5.3 Local Community Safety Priorities
    - 5.3.1 Violent crime
    - 5.3.2 Anti-Social behaviour
    - 5.3.3 Substance Misuse
    - 5.3.4 Reducing Re-offending
    - 5.3.5 Road Safety – Killed & Seriously Injured
  - 5.4 Cross-cutting Themes
  - 5.5 Recommendations to Safer Maidstone Partnership
- 6. Implementation and Monitoring**
- 7. Strategic Assessment Review Date**
- 8. How to get further information**

## **APPENDICES**

- Appendix 1 – Methodology and Information Sources
- Appendix 2 – Case studies
- Appendix 3 – Maidstone demographic and economic summary
- Appendix 4 - Terrorism
- Appendix 5 - Glossary of Terms
- Appendix 6 – Statistical Process Charts explained

# 1. Executive Summary

## 1.1 Overview

### 1.1.1 Victim-Based Crime in Kent October 2013 to September 2014

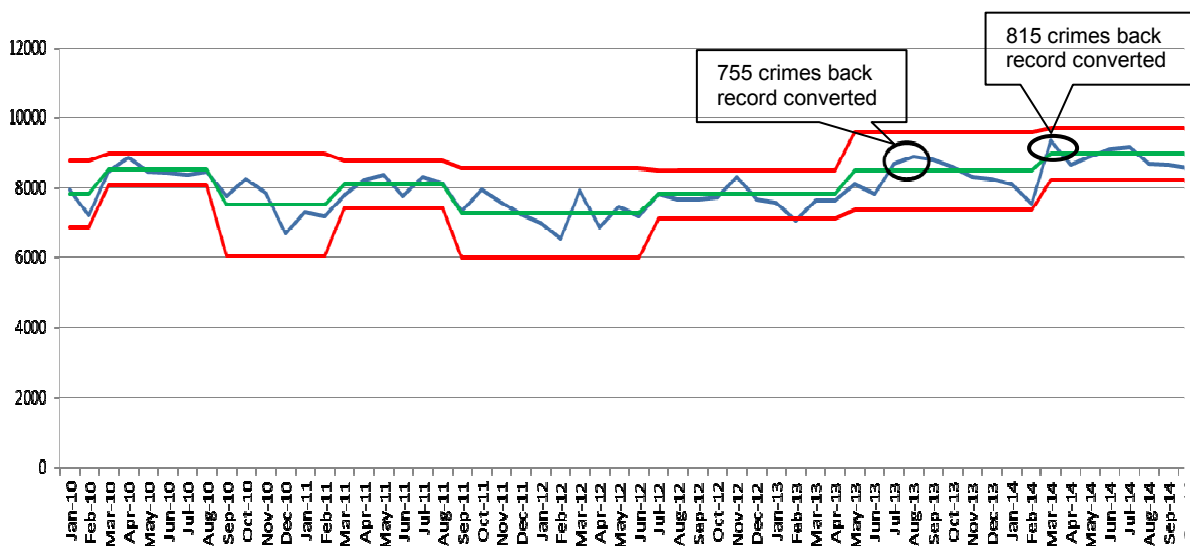
*Please note: Due to changes in crime recording practices in Kent as a result of the HMIC inspection of Kent Police crime recording practice, current data is not directly comparable to previous years and should only be used as a guide.*

The crime types which have been most affected by changes to recording practices are violence related offences, including both Violence Against the Person (VAP) and Violent Crime. These violence offences form part of Victim Based Crime. The changes to recording practices are evident in some of the Kent Police SPC charts such as VAP which shows a significant step change in the number of recorded incidents. The Statistical Process Control (SPC) chart<sup>1</sup> below reflects these changes. Due to these changes it is not possible to compare the current year with previous years.

Thanet recorded the highest number of victim based crimes between October 2013 and September 2014 as well as the highest rate per 1,000 population of 85.5 crimes. This was followed by Dartford and Swale with the next highest rates of victim based crime during that 12-month period, with Swale also have the second highest number of recorded crimes. The lowest levels of victim-based crime per 1,000 pop were recorded in Tunbridge Wells and Tonbridge and Malling, whilst Maidstone enjoys the fourth lowest

Between April to September 2014, Margate Central ward in Thanet saw the highest rate of Victim Based Crime, followed by Town ward in Dartford. In the same period, Maidstone High Street ward saw the highest volume of victim-based incidents (1,140).

### SPC Chart for Victim-Based Crime in Kent (excl. Medway) January 2010 to September 2014



Given the limitations on the comparability of data between years noted above, 9 out of 12 Kent district experienced year on year increases in victim-based crime. Overall, Kent districts (excluding Medway) experienced a 7.76% increase in victim-based crime in 2013/14 compared to the same period in 2012/13, with 6,230 more reports.

### 1.1.2 Crime in Maidstone October 2013 to September 2014

<sup>1</sup> See Appendix 5 for guidance in understanding SPC Charts

All crime in Maidstone rose by 5.8% in the period October 2013 to September 2014. This compares with a rise 8.9% in the previous year, and fall of 12.9% the year before that. There were relatively small increases in reported incidences of shoplifting (+2.0%), motor vehicle thefts (+3.2%) and road traffic collisions (+3.1%), but much larger increases in assaults resulting in hospital admissions (+35.4%), sexual offences (+20.9%), violent crime (+23.1%) and the number of persons experiencing repeat instances of domestic abuse (+23.1%). Set against these rises were reductions in reported anti-social behaviour (-8.6%), drug offences (-8.7%), robbery (-7.7%), dwelling burglary (-5.6%), and metal theft (-53.5%).

Despite the increase in recorded crime, Maidstone improved its position relative to other Kent districts from 5<sup>th</sup> place in 2012/13 (53.3 crimes per 1,000 population) to 4<sup>th</sup> place county-wide (59.8) crimes per 1,000 population). (See Section 3 for further details).

### **1.1.3 Kent Police and Crime Commissioner**

Police Reform & Social Responsibility Act 2011 introduced elected Police and Crime Commissioners (PCCs). The newly elected PCC took over from Kent Police Authority on 22 November 2012 and now determines:

- The policing strategy for Kent & Medway
- The force budget
- The police element (or precept) of the Council Tax
- The appointment (and if necessary dismissal) of the Chief Constable.

The legislation requires the PCC to issue a Police & Crime Plan. The Kent Police & Crime Plan is a four year plan from 1 April 2013 to 31 March 2017 and is refreshed annually. The plan sets out the Commissioner's vision and priorities for policing in the county which includes placing victims first, focusing on reducing crime and anti-social behaviour and protecting the public from harm. To achieve the aims set out in the plan the following strategic priorities are identified:

- Cutting crime & catching criminals
- Ensuring visible community policing is at the heart of Kent's Policing model
- Putting victims and witnesses first
- Protecting the public from serious harm
- Meeting national commitments for policing
- Delivering value for money

The plan also references a commitment to working closely with community safety and criminal justice agencies across the county to ensure that a seamless service is provided to victims of crime and anti-social behaviour, with a particular focus on:

- Tackling the root causes of crime and anti-social behaviour
- Reducing re-offending and repeat victimisation
- Improving joined up working between agencies

### **Annual Refresh of the Police and Crime Plan 2014/15**

The PCC reviewed the current plan in Autumn 2014, and asked for feedback from partners and the public in response to a consultation document entitled '*Have your say on Policing in Kent*':

Following the consultation, three new policing priorities have been included in the revised plan:

- £200,000 each year for the next three years to work with partner agencies to help reduce child sexual exploitation;
- a renewed emphasis on supporting victims and witnesses, including the establishment of a new Victims and Witness Unit in Ashford.



- The PCC has pledged to work closer with district community safety units to work together to drive and deliver crime reduction.

#### 1.1.1.4 Kent Community Safety Agreement 2014-17

The Community Safety Agreement (CSA) for 2014-17 outlines the key community safety priorities for Kent and replaces the previous agreement which expired on 31<sup>st</sup> March 2014. There have been many changes since the last agreement was developed, including a mutual duty on the PCC and CSPs to cooperate to reduce crime, disorder and re-offending. As a result, the development of the new agreement has been aligned with the annual review of the Police and Crime Plan, as well as future developments in relation to commissioning by the Police and Crime Commissioner (PCC) and all budget setting processes. These changes will help to ensure a dovetailing of priorities and a greater likelihood of crossover between partners providing opportunities for joint working and more opportunity for investment in community safety generally.

Data analysis, partnership consultation and the most recent local strategic assessments indicated that the priorities and most of the cross-cutting themes identified in the 2011-14 Agreement should remain, and would continue to benefit from support at a county level. The diagram below not only includes the priorities and cross-cutting themes for the CSA but also shows the strategic priorities set out in the Police and Crime Plan, illustrating the importance of integrating the work of all partners:



Whilst the above diagram sets out the existing priorities, this will be subject to annual review and may be amended during the three year period of the agreement if appropriate. The review will take into consideration the outcome of the local assessments as well as any emerging issues or changes to legislation that may need to be implemented.

### **Kent County Community Safety Agreement Suggested Priorities:**

Datasets from partner agencies have been sourced and analysed to look at volume and trends as well as comparing them to national datasets where possible. The outcome of this initial analysis are the following emerging county-wide priorities:

- Substance Misuse
- Domestic Abuse
- Acquisitive Crime
- Violent Crime
- Road Safety

### **Other Local Community Safety Priorities:**

Although these issues are not identified as one of the current priorities (with the exception of legal highs which is covered within Substance Misuse), they can be incorporated into the broader cross-cutting themes, for example 'supporting victims and vulnerable households/individuals' and 'safeguarding children and young people'. Some of the issues that have become a focus either to partners or the public over the last year include:

- Mental health
- Preventing violent extremism
- Child sexual exploitation
- E-safety
- Legal highs (*also known as New Psychoactive Substances or 'Lethal Highs'*)

## **1.2 Key Facts April 2013 to March 2014**

Key crime statistics are summarised in this section; they should not be read out of context and are a guide to key crime highlights in 2013-14. In addition, the 'health warning' on Page 3 must be kept in mind.

**In Maidstone 2013-14 all crime** increased by 513 from 8,897 crimes in 2012-13 to 9,410 in 2013-14. Over the five years 2009-10 to 2013-14 crime in Maidstone fell some 14%, only to rise over the last two years so that overall the crime level is the same as it was in 2009/10.

Despite the overall increase in recorded crime noted above, out of 28 crime categories analysed in detail in Section 3, Maidstone improved or maintained its position relative to the other 11 district councils in Kent in 14 categories, including all three measures of domestic abuse, assaults, theft and handling and violent crime.

**Anti-Social Behaviour:** The success in tackling ASB across the county is shown through a continuous reduction over the last few years. Compared to 2012/13 ASB incidents in Kent (excluding Medway) have fallen by 3,670 (8.3%), from 44,210 to 40,540. Most of the 12 districts saw a decrease in the incidents of Anti-Social Behaviour, with Ashford seeing the largest decrease of 1,341 incidents (-42%), followed by Shepway with a reduction of 632 incidents (-16.7%). Thanet had the highest volume and rate (per 1,000 population) of ASB whilst Ashford had the lowest volume with 1,850 incidents and a rate of 15.40 incidents per 1,000 people. ASB reduced in Maidstone for the third consecutive year by nearly 6% or over 500 fewer instances. The number of ASB incidents per 1,000 population has reduced from 27.7 to 23.4, although Maidstone's county ranking has slipped from 4<sup>th</sup> to 5<sup>th</sup>.

At ward level High Street, Fant and East wards recorded the highest volumes of ASB with 666, 246 and 222 recorded incidents respectively for the 9 month period April to December 2014. These three wards account for 38% of all ASB incidents in

Maidstone. Reducing ASB is the top priority of the Police and Crime Commissioner, and will remain a priority for the SMP.

The recorded number of incidents of **Domestic Abuse** increased in the period October 2013 to September 2014 by 258 incidents (14.5%) from 1,784 to 2,042. There was a proportionally larger increase in the number of repeat victims (from 416 to 512), leading to a slight increase in the percentage of repeat victims from 23.3% to 25.1%. Across Kent there was an 11.6% rise in the number of incidents of DA. Given the well researched evidence that domestic abuse is one of the most underreported crimes, with an estimated 35 occurrences before a victim feels able to report, increases in reports are to be welcomed and this is an area that should remain a focus for the Partnership.

**Drug offences in Maidstone** decreased from 472 in 2012-13 to 431 in 2013-14, a fall of 41 offences (8.7%). Maidstone is now ranked 11<sup>th</sup> in the County, (compared with 10<sup>th</sup> place county-wide in 2012-13). Our rate per 1,000 population of 2.74 is above the County level of 2.02.

**Road Safety:** Maidstone continues to record the highest number of RTC casualties in the county.

Casualties from road traffic accidents increased by 21 (3.1%) from 672 in 2012-13 to 693 in 2013-14, although this is still a reduction from 726 in 2008. The rate of increase is a third of the county-wide increase of 9.0%. However, the number of KSI casualties has risen 54 to 76, a 40.7% rise, but remains below the 2008 total of 89. In Kent, only Dover district saw a decrease in casualties.

The A26 remains as the road with the highest number of collisions per km (just under 12) in the Borough. At ward level, High Street had the highest count of RTC casualties (8 KSI; 56 slight) in Maidstone, followed by Boxley (1 KSI, 44 slight) and North Downs (6 KSI, 32 slight). The 17-24 age group continues to be over-represented in RTC's and thus will remain an SMP priority.

**Reducing Re-Offending:** In 2009 a National Audit Office report estimated that re-offending by young ex-prisoners costs between £8.5 to £11 billion per year. <https://www.nao.org.uk/report/the-youth-justice-system-in-england-and-wales-reducing-offending-by-young-people/>. Reducing re-offending has been a statutory duty of community safety partnerships since 1st April 2010, and is one of the cross-cutting themes of the Kent Community Safety Agreement 2014-17. Preventing further offences reduces the number of victims, and the damage done to local families and communities. Reducing re-offending cuts across other SMP priorities, especially Substance Misuse and Domestic Abuse.

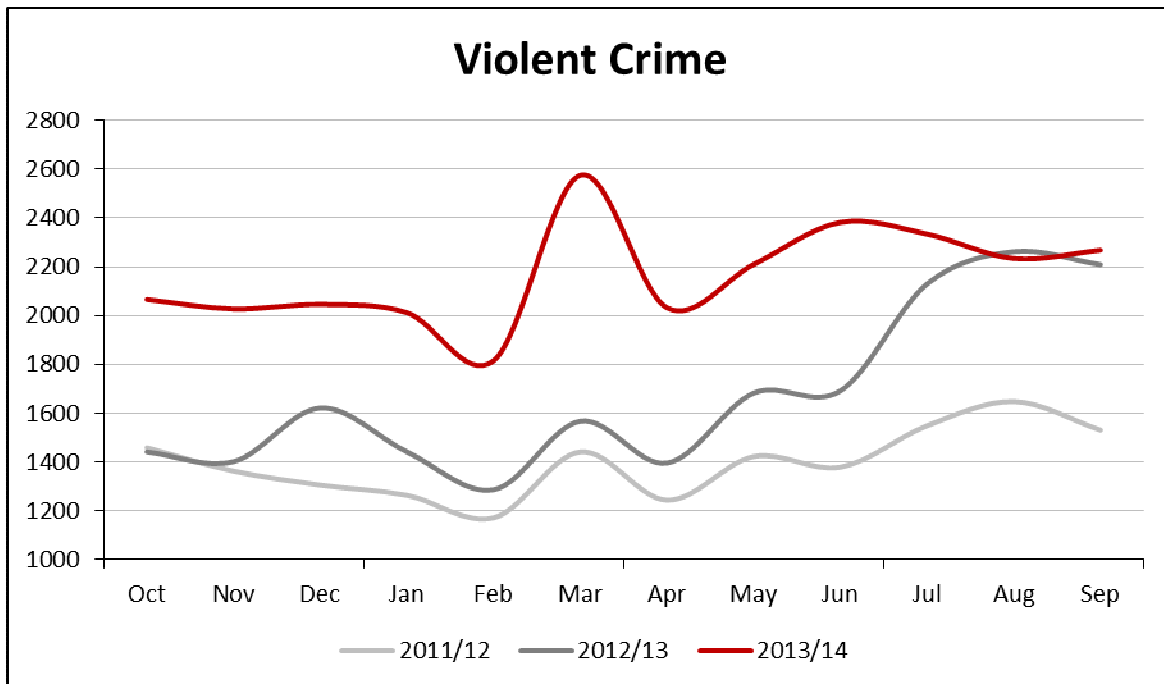
Each quarter the Ministry of Justice publish local re-offending rates. In 2010 it was identified that Kent's overall performance and Maidstone's local performance was not as good as it should be. Across the period January to December 2013 the actual re-offending rate for Maidstone was just 1.4% higher than the predicted rate, which places Maidstone 4<sup>th</sup> when compared to the other 11 districts in Kent. The Reducing Re-offending Sub-Group will continue to drive forward multi-agency work across the 7 Resettlement Pathways and to add value to each others work in terms of effectiveness and impact on offenders and victims.

**Theft and handling stolen goods increased slightly by 4.3% (113 more offences)** although, Maidstone's County-wide ranking improved two places 9<sup>th</sup> to 7<sup>th</sup>.

**Shoplifting offences** have seen a small rise from 1,086 to 1,108 offences (+2.0%), which maintains Maidstone in 10<sup>th</sup> place in the county.

**Vehicle crime:** Whilst theft of a motor vehicle increased by 160 incidents (+3.2%), theft from motor vehicles decreased by 121 to 482 incidents in 2013/14. Despite these mixed results, Maidstone improved its county-wide ranking from 7<sup>th</sup> to 4<sup>th</sup> (theft of) and maintained its ranking (4<sup>th</sup>) for theft from.

**Violent Crime:** The crime types which have been most affected by changes to recording practices are violence related offences, including both Violence Against the Person (VAP) and Violent Crime. This is evident in the Kent Police SPC chart for VAP (page 4) which shows a significant step change in the number of recorded incidents. The graph below which shows the total of violent crime across Kent (excl. Medway), reflects these changes. Due to these changes it is not possible to compare the current year with previous years.



Given the above caveat, in **Maidstone Violence against the person** increased by 24.4%, from 1,889 incidents to 2,349. Within this overall figure burglary of dwellings offences has increased by 1.6% and robbery by 1 offence to 47 offences. Despite this increase, Maidstone continues to be ranked 6<sup>th</sup> in the county for violent offences.

The number of **Deliberate and Accidental Fires** rose by 8% and 3% respectively.

## **2. Introduction**

### **2.1 The purpose of this Strategic Assessment**

This Strategic Assessment is for the period April 2015 to March 2016, and is prepared on behalf of the Safer Maidstone Partnership (SMP) to inform strategic planning and commissioning priorities for the community safety partnership. It is used to update the priorities and planned activities for the 2015-18 Community Safety Partnership Action Plan.

The purpose of this Strategic Assessment is to provide knowledge and understanding of community safety issues to the members of the Safer Maidstone Partnership, and to provide a sound evidence base upon which the Partnership can base future prioritisation. The assessment is based upon intelligence and analysis and identifies the emerging priorities by considering the patterns, trends and shifts relating to aspects of community safety. It provides a knowledge and understanding of local community safety concerns and considers what needs to be achieved to help improve community safety, including how the community can feel assured and confident that their concerns and fears are being addressed. Emerging priorities are identified through intelligence analysis of patterns, trends and shifts relating to crime and disorder in the Maidstone borough. It is produced annually and complemented by regular assessments that monitor CSP activities.

### **2.2 The background to Strategic Assessments**

The Crime and Disorder Act 1998 gave statutory responsibility to local authorities, the police, and key partners to reduce crime and disorder in their communities. In 2006, a review of the partnership provisions of the Crime and Disorder Act 1998 and the Police Reform Act 2002 led to a series of recommendations to strengthen and extend existing requirements further through the experience gained from partnership working. This resulted in a new set of national minimum standards which came into force in August 2007. The 1998 Act included the requirement to produce a detailed crime and disorder audit through consultation with key agencies and the wider community and had to use the findings to identify strategic priorities and set targets and performance measures. The new national standards placed a legal obligation on responsible authorities to comply with the specified requirements, one of which was the creation of a strategic assessment in place of the previous 3 yearly audit.

The introduction of strategic assessments hoped to move partnerships toward a more intelligence-led business planning approach. It was also hoped that by removing the need to produce a three year audit and replacing it with the requirement to produce a strategic assessment at least yearly, partnerships will improve their understanding of problems and their potential causes and thus respond more effectively to the communities they serve.

### **2.3 Maidstone Community Safety Partnership**

The Crime and Disorder Act 1998 required local councils, police and other agencies to set up Crime and Disorder Reductions Partnerships (CDRPs) and to work together to tackle local crime problems. In Maidstone the CDRP is called the 'Safer Maidstone Partnership' and is referred to as the SMP.

The SMP brings together people from local government, the NHS, the police, the fire service, probation, local businesses, housing providers and voluntary and community organisations to work as a team to tackle issues such as crime, education, health, housing, unemployment and the environment in Maidstone Borough.

SMP membership is made up of the public sector agencies (Kent County Council, Maidstone Borough Council, Kent Police, Kent Police Authority, NHS, Kent Fire and Rescue Service, Kent Probation Service and Maidstone Prison) and also incorporates

members from other key partners including Maidstone Mediation, Kenward Trust and Golding Homes. The SMP's objectives are to:

- Promote Maidstone as a safe place to live, work and visit;
- Take a preventative approach to tackle and reduce anti-social behaviour;
- Reduce violent crime and reduce serious crime in the wards where the trend is higher than the borough average;
- Reduce alcohol related crime in the town centre and identified rural locations;
- Reduce re-offending to at least our predicted rate;
- Reduce drug offences;
- Tackle domestic abuse through supporting victims and challenging perpetrators to change their behaviour;
- Reduce those killed or seriously injured on our roads.

## **2.4 Partnership working in two-tier areas**

The strategic assessment must outline the priorities to escalate to the county level. Kent County Council prepares a community safety agreement based on the individual strategic assessments of partnerships within the county. The county community safety agreement identifies:

- Ways of co-ordinating across the county to address priorities;
- How the responsible authorities might contribute to reducing crime, disorder and substance misuse through closer joint working across the county.

For two tier authorities such as Kent, a statutory Community Safety Agreement was introduced to develop a more joined-up approach to public service delivery, enable more effective and co-ordinated strategic planning across partner agencies and to ensure sustainable and lasting improvements in delivering outcomes.

## **2.5 Maidstone Borough Council Policy Framework - The Strategic Assessment in context**

The Strategic Assessment does not exist in isolation, but is linked to a number of partnership strategies and plans. The Strategic Assessment is a key document which feeds into partners' service and operational plans and informs the work of the Safer Maidstone Partnership.

**The Maidstone Community Strategy** is the topmost level of policy making for the locality. It was first published in 2009 and its purpose is to set the overall strategic direction and long-term vision for the economic, social and environmental wellbeing of Maidstone. The Sustainable Community Strategy was refreshed in July 2013

### **Maidstone Borough Council Strategic Plan**

Maidstone sits at the heart of Kent and within the sphere of influence of London - one of the world's most vibrant cities. Taking its cue from the Maidstone Community Strategy, the Strategic Plan illustrates how Maidstone Borough Council will create the conditions to ensure Maidstone Borough is an attractive place to live, work and visit.

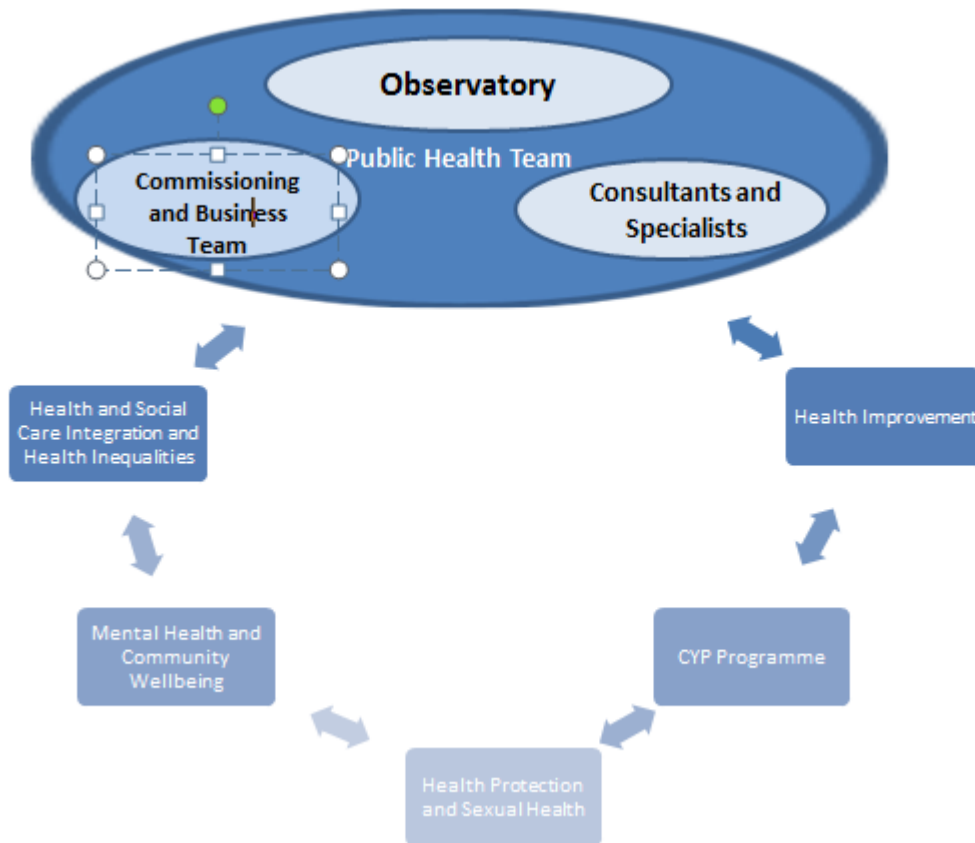
## **2.6 Safer Maidstone Partnership and Public Health**

Public health is defined as:

**"Public Health protects and improves the populations' health and wellbeing, and reduces health inequalities."** (Definition from Public Health England)

The Health and Social Care Act 2012 received Royal Assent on 27 March 2012 and was a critical step in the transition towards the establishment of a new public health system. From April 2013 upper tier and unitary local authorities provide local leadership for public health, underpinned by new statutory functions, dedicated resources and expert public health teams. This new role complements but also

extends existing local authority functions in terms of maximising the wellbeing of citizens, including for example, environmental health and tackling local crime priorities.



**Public health’s links to SMPs priorities:**

**1. Violent crime:**

- PH provide approximately £300,000 per year into the Independent Domestic Violence Advisor (IDVA) service
- PH are currently developing a domestic abuse needs assessment to help design and commission future services
- PH will work with the Kent and Medway Domestic Abuse Steering Group to examine how to improve support for children and young people affected by DA, as well as examining the programmes available for perpetrators
- In 2015, PH plans to re-start agreement where A&E departments collect and provide information about violent assaults to the Police. This can then be used to target violence hotspots

**2. Substance Misuse:**

PH published the 2014 Alcohol Strategy and is facilitating its implementation by;

- helping local areas produce action plans related to the strategy
- offering in depth analysis of local statistics
- highlighting and sharing best practice from around Kent and nationally
- Piloting awareness raising and IBA (Identification and Brief Advice) campaigns
- KDAAT have recently joined PH

**3. Reducing Re-offending:**

- PH have recently completed a Community Offenders Health Needs Assessment
- PH is undertaking a health review of young offenders.
- PH are now working with Kent Police, CRC, NPS and IOM leads to improve the health of offenders which will hopefully reduce their re-offending.
- A key focus of this is improving the data sharing between health and criminal justice organisations

#### **4. Anti-Social Behaviour:**

- Much of the ASB in Kent is alcohol related; we are hoping to reduce this through the Alcohol Strategy
- We work closely with other relevant KCC teams (Community Safety, Troubled Families) where appropriate

#### **5. Road Safety:**

- KCC Transport and Safety Policy is led by the Highways team (David Joyner leads)
- Public Health England have recently produced "Reducing unintentional injuries on the roads among children and young people under 25 years"
- [https://www.gov.uk/government/uploads/system/uploads/attachment\\_data/file/322212/Reducing\\_unintentional\\_injuries\\_on\\_the\\_roads\\_among\\_children\\_and\\_young\\_people\\_under\\_25\\_years.pdf](https://www.gov.uk/government/uploads/system/uploads/attachment_data/file/322212/Reducing_unintentional_injuries_on_the_roads_among_children_and_young_people_under_25_years.pdf)

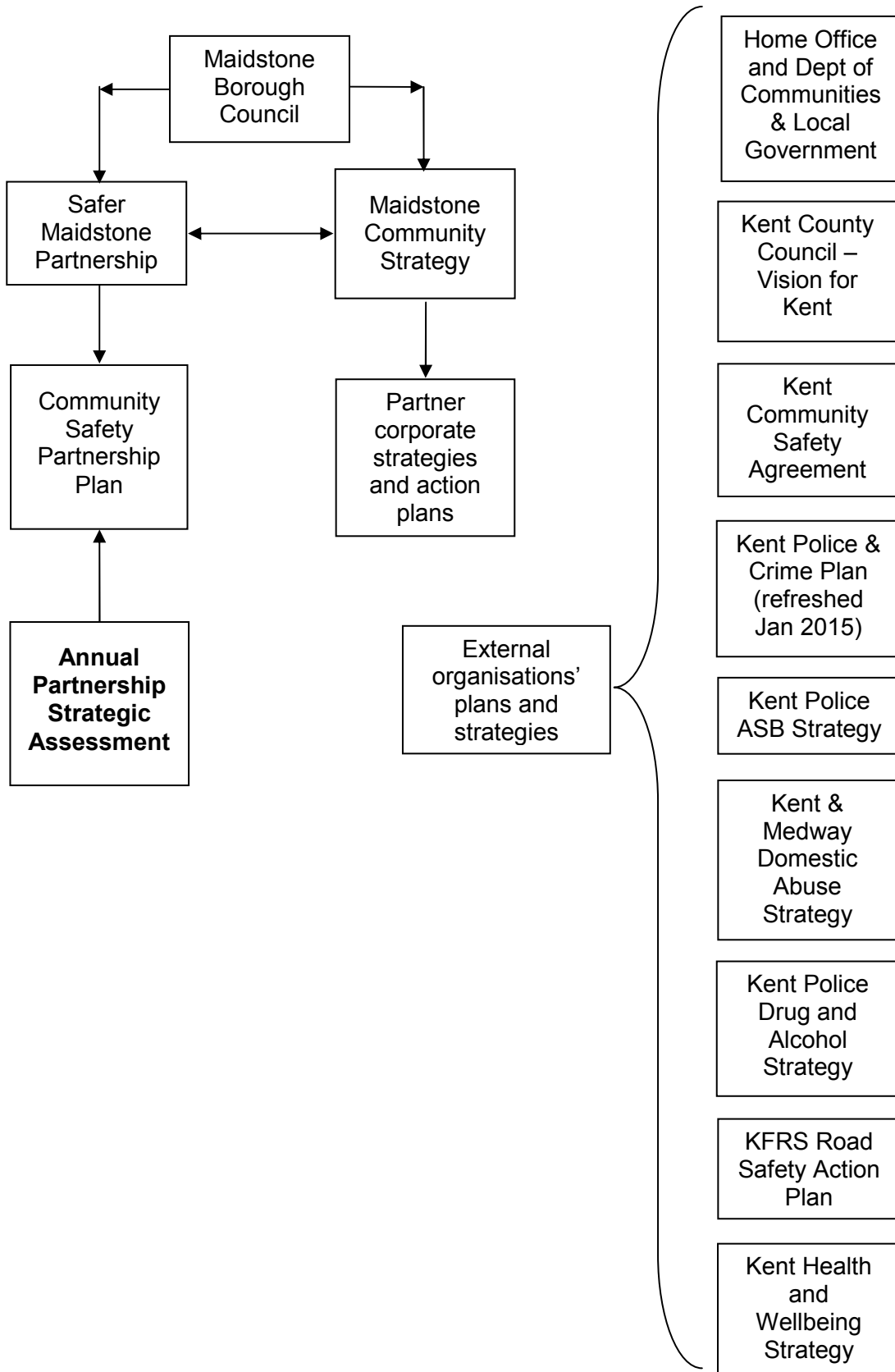
### **2.8 Contributors to this Assessment**

The Strategic Assessment has been produced on behalf of the Safer Maidstone Partnership by Duncan Bruce in consultation with partnership agencies represented in the SMP. In addition, thanks are gratefully expressed to partners represented through the Kent Connects portal, and to the other local partners with whom we continue to work.

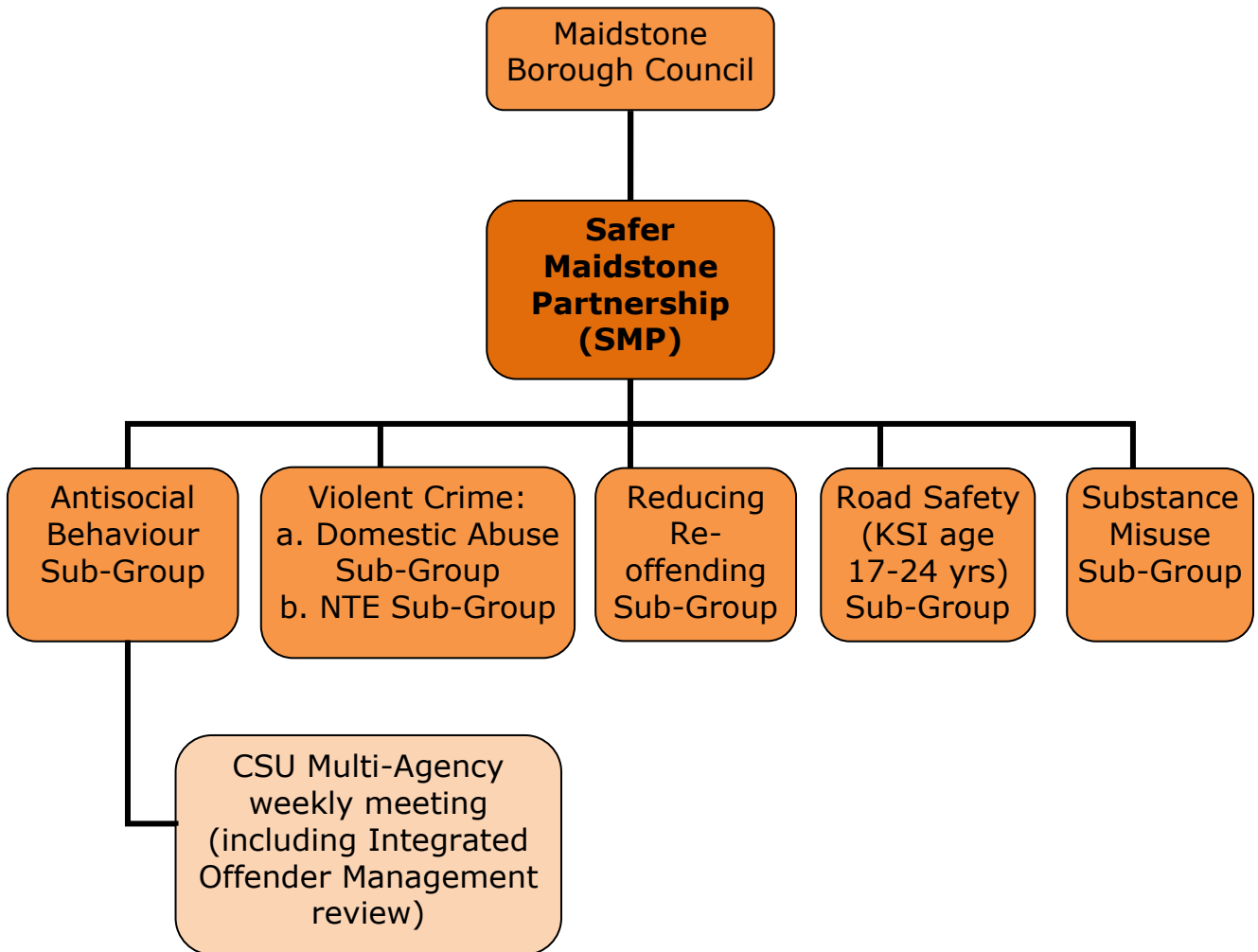
Chart 1 overleaf shows how the Strategic Assessment informs the Partnership Plan and sits alongside national and county level policy documents. The current organisation chart for the Safer Maidstone Partnership is shown as Chart 2.



**Chart 1: Strategic Assessment - Policy and Strategy linkages**



**Chart 2 – Safer Maidstone Partnership organisation**



### 3. Maidstone Crime and Resolution Overview

#### 3.1 Three year time series<sup>2</sup>

Category	2011 / 2012 <sup>3</sup>	2012 / 2013	2013 / 2014	Volume change <sup>4</sup>	% change	Per 1k pop <sup>5</sup>	District Rank <sup>6</sup>
Total victim based crimes	7,372	8,033	8,457	+424	+5.3%	53.8	4
Total crimes against society <sup>7</sup>	670	864	953	+89	+10.3%	6.1	N/A
All crime total	8,042	8,897	9,410	+513	+5.8%	59.8	N/A
Anti-Social Behaviour incidents	4,923	4,026	3,679	-347	-8.6%	23.4	5
Assaults resulting in hospital admissions (Sept-Aug 12/13 & 13/14)		48	65	+17	+35.4%	0.4	8
Burglary – Dwelling	391	496	468	-28	-5.6%	7.4	6
Burglary – Other	661	607	568	-39	-6.4%	3.6	6
Criminal Damage	1,244	1,379	1,379	NIL	NIL	8.8	5
Domestic Abuse (DA) – number of incidents (incl 16 & 17yr olds)	1,739	1,784	2,042	+258	+14.5%	16.1	5
DA - number of repeat victims	426	416	512	+96	+23.1%	4.0	5
DA - % repeat victims	24.5%	23.3%	25.1%	+1.8%	+7.7%		5
Drug Offences	359	472	431	-41	-8.7%	2.7	11
Metal Theft	158	170	79	-91	-53.5%	0.5	4
Re-offending rate: % difference between actual v predicted rate	Predicted Actual		7.86% 7.97%	+0.11%	+1.4%		4
Robbery	37	65	60	-5	-7.7%	0.4	5
Sexual Offences	102	168	203	+35	+20.9%	1.3	5
Shoplifting	955	1,086	1,108	+22	+2.0%	7.04	10
Theft & Handling Stolen Goods	2,698	2,615	2,728	+113	+4.3%	17.3	7
Theft from a Motor Vehicle	504	603	482	-121	-20.1%	3.1	4
Theft of a Motor Vehicle	181	155	160	+5	+3.2%	1.0	4
Theft of Pedal Cycle	112	104	138	+34	+32.7%	0.9	6
Other Theft Offences	1,631	1,425	1,482	+57	+4.0%	9.4	6
Violent Crime	1,652	2,122	2,612	+490	+23.1%	16.6	6
Violence Against the Person	1,513	1,889	2,349	+460	+24.4%	14.9	6

<sup>2</sup> Data sources: Kent CSU data pack, Kent Public Health, Kent Police, Kent Fire & Rescue Service, West Kent CCG, Kent Wardens.

<sup>3</sup> Time period used for data is October to Sept each year, except Assaults September to August and RTC casualties July to June.

<sup>4</sup> The number difference and % difference columns are coloured red or green as appropriate against the previous 12 month period.

<sup>5</sup> Population figure used to calculate the per 1,000 population is mid-2012 figure of 157,300, except Burglary Dwelling which uses households figure (63,400), and domestic violence uses population 16+ figure (127,000).

<sup>6</sup> District ranking is based on per 1,000 population value. Rank 1 indicates best of 12 Kent districts.

<sup>7</sup> Crimes in this category include: drug offences, possession of weapons, fraud, public order offences.

					%		
Accidental Fires	187	199	205	+6	+3.0%	N/A	12
Deliberate Fires	99	88	95	+7	+8.0%	N/A	7
Road Traffic Collisions – all casualties (July-June 11/12 to 13/14)	622	672	693	+21	+3.1%	N/A	12
KSI <sup>8</sup> casualties All ages	58	54	76	+22	+40.7%	N/A	11
KSI casualties <16 yrs	55	50	51	+1	+2.0%	N/A	9
KSI car drivers 17-24 yrs <sup>9</sup>	1	1	4	+3	+300%	N/A	12
KSI road users aged 65 and over	9	3	9	+6	+200%	N/A	12

<sup>8</sup> KSI = Killed and Seriously Injured where the number of persons killed and the number of persons seriously injured are combined.

<sup>9</sup> KSI car drivers 17-24 yrs and road users over 65 data is for January to June (6 months) each year.

## 1.2 Maidstone crime resolution outcome analysis: April – December 2014

	1) Charged/Summoned	2) Caution – youths	3) Caution – adults	4) Taken into consideration	5) Offender Died	6) Police Notice for Disorder	7) Cannabis Warning	8) Community Resolution	9) Not in public interest (CPS)	10) Not in public interest (Police)	11) Prosecution prevented – suspect under age	12) Prosecution prevented – suspect ill	13) Prosecution prevented – victim/key witness dead/ill	14) Evidential difficulties victim based – suspect not identified	15) Evidential difficulties prevent further action; victim supports police	16) Evidential difficulties prevent further action; victim does not support	17) Prosecution time limit expired	18) Investigation complete – no suspect identified	Total outcomes
<b>Apr 14</b>	110	9	19	0	1	6	0	24	0	0	0	3	0	14	68	80	4	367	<b>705</b>
<b>May 14</b>	120	3	28	0	0	9	0	19	1	0	2	7	1	6	80	101	1	339	<b>717</b>
<b>Jun 14</b>	128	5	37	2	0	7	0	16	0	0	1	7	1	8	116	82	0	326	<b>736</b>
<b>Jul 14</b>	140	3	19	1	0	11	0	22	0	0	1	5	0	5	67	93	0	439	<b>806</b>
<b>Aug 14</b>	120	3	27	0	0	7	0	25	0	1	1	8	0	12	98	80	0	368	<b>750</b>
<b>Sep 14</b>	116	4	15	0	0	5	0	21	0	0	1	9	1	7	92	78	0	428	<b>777</b>
<b>Oct 14</b>	106	3	18	1	0	2	0	8	0	0	1	12	0	8	88	96	1	376	<b>720</b>
<b>Nov 14</b>	130	10	15	0	0	1	0	25	0	0	0	5	0	4	91	84	1	358	<b>724</b>
<b>Dec 14</b>	98	9	19	0	0	3	0	12	0	0	1	5	1	7	75	116	1	364	<b>711</b>
<b>Total</b>	<b>1,068</b>	<b>49</b>	<b>197</b>	<b>4</b>	<b>1</b>	<b>51</b>	<b>0</b>	<b>172</b>	<b>1</b>	<b>1</b>	<b>8</b>	<b>61</b>	<b>4</b>	<b>71</b>	<b>775</b>	<b>810</b>	<b>8</b>	<b>3,365</b>	<b>6,646</b>
<b>%</b>	<b>16.1%</b>	<b>0.7%</b>	<b>2.9%</b>	<b>0.1%</b>	<b>0%</b>	<b>0.8%</b>	<b>0%</b>	<b>2.6%</b>	<b>0%</b>	<b>0%</b>	<b>0.2%</b>	<b>0.9%</b>	<b>0.1%</b>	<b>1.1%</b>	<b>11.7%</b>	<b>12.2%</b>	<b>0.2%</b>	<b>50.6%</b>	<b>100%</b>

## 4. Performance 2013-2014: Progress on current priorities

### 4.1 Anti-Social Behaviour

Although the evidence shows that ASB in Maidstone has fallen a further 8.6%, slightly more than the County-wide average fall 8.3%. Despite this, Maidstone's county ranking has fallen from 4<sup>th</sup> to 5<sup>th</sup> for ASB incidents per 1,000 population. At ward level High Street, Fant and East wards recorded the highest volumes of ASB with 666, 246 and 222 recorded incidents respectively for the 9 month period April to December 2014. These three wards account for 38% of all ASB incidents in Maidstone. In terms of public perception, the relatively highly concentrated nature of ASB in Maidstone means that overall the borough performs well compared with the rest of Kent. Despite the large night time economy (NTE), public perceptions of drunk or rowdy behaviour or teenagers hanging about are well below expected levels.

Despite the decrease in ASB incidents, and given that much ASB occurs away from the town centre, there remains a need to support both town centre safe socialising and more focused work in specific locations, including rural 'hotspots'. During 2013/14 the ASB Sub-Group has:

- Hosted the weekly SMP Partnership Tasking and Action Group meeting to identify repeat and vulnerable victims and promote joint working.
- Sought ASB/Injunction orders where appropriate.
- 14 Action Days have been held with multiple agencies visiting targeted areas as part of Operation Civic.
- Worked with licence premises holders through the Night-time Economy Forum and other direct liaison
- SMP continued to fund the Urban Blue Bus which acts as a place of safety in the NTE, and enables multi-agency outreach working to a variety of client groups
- Worked with local schools and hospitals to develop initiatives – such as 'Wasted' - aimed at raising young people's awareness of the dangers of drugs and alcohol through the SMP Substance Misuse Sub-Group.
- Provided community based outreach in conjunction with Switch Youth Café.
- Identified NEET's (Not in Education, Employment or Training) and referred them to Maidstone Engage programme.
- Identified troubled families and referred to the Maidstone Families Matter programme.
- Carried out targeted substance misuse work with offenders.
- Developed and promoted youth diversionary activity: such as Zeroth Gym and Challenger Troop, SNAP discos, community football & boxing, Power Project (YISP).

**Case Study:** Two vulnerable residents, one housebound, one with learning difficulties and partially sighted had been the on-going victims of hate crime and antisocial behaviour in Coxheath. Youths were known to be entering the property overnight and there was evidence of drug use and melted plastic containers in and outside the property. The two vulnerable residents believed that the property was haunted and had been sleeping in the downstairs sitting room for years.

The Kent Community Warden for the area co-ordinated the efforts of the Police, Social Services, Waste Services and the local housing provider to reassure the residents, clear the house and move them to a new property in another area. In addition, Kent Fire and Rescue visited the vulnerable people to ensure they were educated in fire safety.

**Further case studies are to be found at Appendix 6**

## 4.2 Violent Crime - Domestic Abuse

Evidence shows that in Maidstone **Domestic Abuse** has increased by 258 incidents, (from 1,784 to 2,042), an increase of 14.5%. However, given the underreported nature of domestic abuse, this is an area that should remain a focus for the Partnership, particularly given the continuing economic austerity which can place households under stress. During 2013/14 the role of DA Sub-Group continued to be delivered by the Maidstone Domestic Violence Forum, a registered charity. During 2013/14 the Forum has:

- Ensured the smooth changeover from K-DASH to Choices DA Services when the former organization resolved to cease operation;
- Supported – through direct payment - the establishment of a DA One-Stop Shop to ensure all services are available under one roof;
- Organised and promoted a one day DA workshop to develop a revised Action Plan, aligned with the MBC Community Safety Plan and County-wide DA strategy.
- Refreshed and reprinted the Domestic Violence Handbook;
- Purchased and distributed a variety of practical and promotional items, including biro pens with essential phone numbers on, to personal alarms
- Launched a Work Place Health employee awareness campaign.
- Supported the Freedom programme and Independent Domestic Violence Advisor (IDVA) service.
- Promoted and supported the Community Domestic Abuse Programme (CDAP).
- Referred all High Risk cases to Multi-Agency Risk Assessment Conference (MARAC).
- Promoted the DA Schools Project (SAFE).
- Helped facilitate the Sanctuary and Flight Fund Schemes.
- Increased referrals for domestic abuse victims who are street homeless.
- Worked with the main social housing providers to increase awareness of DA issues;
- Supported the Specialist Domestic Violence Court and the work of the Independent Domestic Violence Advisors;
- Provided support for male offenders wishing to rehabilitate.

## 4.3 Violent Crime – Night Time Economy (NTE)

The crime types which have been most affected by changes to recording practices are violence related offences including Assault and Violence Against the Person (VAP) (see page 3. Given the changes in crime recording, the real increase in violent crime is estimated to be between 4 to 8%, rather than the actual year on year increase of 23% the data now indicates. However, we are conscious that the violent crime category has shown increases, notably violence against the person from alcohol and drug related violence as part of the night time economy

Given the caveat above, a county-wide comparison shows Maidstone is middle ranked (6th) for violent crime per 1,000 population, and 4th amongst our West-Kent neighbours. At ward level, in the 12 month period January to December 2014, High Street ward experienced the highest number of violent crimes in the County (574), an increase of 10.6% from the previous year, and 28% of all violent crime in Maidstone. Other wards with high levels of violent crime include Park Wood, Fant and Shepway North. During 2013/14, the Safer Maidstone Partnership:

- In conjunction with Pubwatch, excluded violent individuals from the Town Centre premises.
- Shared information proactively from CCTV control room and Kent Police via MaidSafe network radios provided to door staff of key premises.
- Supported the town centre Street Pastors initiative.
- Supported successful initiatives such as the Town Centre purple flag scheme

- Used CCTV to protect and prevent crime.
- Enforced Alcohol Control Zones.
- Supported the county-wide Hate Crime Reporting Line.

#### **4.4 Substance Misuse**

Although drug offences have reduced by 8.7% (41 fewer offences), offences per 1,000 population are well above the County average, and Maidstone is ranked in 11<sup>th</sup> place overall County-wide. To tackle this, during 2013/14 the Substance Misuse Sub-Group has facilitated:

- Targeted multi-agency evening operations have been delivered with Trading Standards, Kent Police and Borough Council teams to tackle underage sales and licensed premises; as a result a premises license has subsequently been reviewed and information gathered on a number of other premises.
- Supported a Legal Highs awareness campaign aligned with national campaigns.
- Supported 'SNAP' discos which were attended by over 1,800 young people in 2013/14, where targeted messages were delivered regarding the misuse of drugs and alcohol.
- Service provision provided by CRI has been integrated into the partnership. Outreach workers have delivered the Maidstone Assertive Outreach programme which engages with hard to reach individuals (e.g. street population) misusing substances.
- Worked with licence holders through the Night-time Economy Forum and other direct liaison;
- Promoted Maidstone as a safe place to visit for leisure and entertainment;
- Worked with local schools and hospitals to develop initiatives – such as Theatre ADAD's 'Wasted' - aimed at raising young people's awareness of the dangers of drugs and alcohol through the SMP Substance Misuse Sub-Group;
- Overseen the delivery of the Don't Abuse The Booze project to all Maidstone secondary school including one PRU. DATB is a two year project with a 'whole borough' integrated approach to firmly tackle problem drinking head-on by:
  - Developing a comprehensive programme of alcohol education in our schools, Pupil Referral Units (PRUs) and colleges;
  - Proactively reducing 'pre-fuelling' and binge-drinking;
  - Challenging alcohol fuelled anti-social behaviour in identified 'hot-spots' in town centre and rural locations;
  - Reduce excess emergency ambulance call-outs and A&E admissions.

The integrated approach will have a direct impact on reducing the four key harms arising from alcohol abuse: harms to health, harms to public order, harms to productivity and harms to families and society.

#### **4.5 Road Safety – Killed and Injured 17-24 Year Olds**

Evidence shows that road safety has improved on Maidstone's road over the last 10 years. However, young drivers in the 17-24 age group experience a disproportionate number of crash's, and the collisions they have are more serious. The Road Safety Sub-Group has:

- Proactively targeted young drivers and drivers of two-wheeled vehicles.
- Identified hotspots of concern.
- Identified repeat offenders for speeding and promoted Speedwatch.
- Held multi-agency events around speed enforcement and safety.
- Delivered Safety in Action programme to all primary school children transitioning to secondary school, providing road safety education and pedestrian awareness.
- Promoted walking buses and 20MPH zones around schools.
- Promoted bus safety driver and pedestrian awareness.



- Signposted to bicycle and marking events.
- Promoted focused campaigns on discouraging drink driving and using mobile phones.
- Supported KFRS to promote their demonstration/learning events:
  - Car'n'Age
  - Carmageddon
  - Rush
  - Jack & Jill
  - Licence to Kill

#### **4.6 Reducing Re-offending**

Reducing re-offending across the age range is a Government target for all CSP's. This is particularly important when those who have already been through the criminal justice system commit over half of all crime. Reducing re-offending was adopted as the SMP's 5<sup>th</sup> priority in 2012/13 following an analysis of Maidstone's actual re-offending rate against what its expected rate should be. A re-offending sub-group was established involving all key agencies to gain an overview of which agencies are doing what in terms of the 7<sup>10</sup> resettlement pathways and provide strategic direction to the Integrated Offender Management (IOM) and Deter Young Offenders (DYO) groups.

- All offender managers have been briefed in relation to the process and benefits of these approaches.
- Restorative Justice has become an embedded process within Integrated Offender Management (IOM).
- Community Payback scheme is used by Maidstone Borough Council and some parish councils.
- Electronic 'Buddy' tracking is being piloted in partnership between Kent Police and Probation. At present this can only be undertaken with the agreement of the offender.
- Yes Plus and Challenger Troop commissioned to provide diversionary and personal development programmes at Kings Reach Pupil Referral Unit (PRU).

---

<sup>10</sup> 1. [Attitudes, Thinking and Behaviour](#)  
 2. [Accommodation](#)  
 3. [Drugs and Alcohol](#)  
 4. [Children and Families](#)  
 5. [Health](#)  
 6. [Education, Training and Employment](#)  
 7. [Finance, Benefit and Debt](#)

## 5. Community Safety Priorities 2015-16 and Recommendations

### 5.1 Establishing SMP Priorities – Local Crime Priorities Assessment Score Sheet

Crime category	Maidstone Performance & Comparisons				Sub-total	Community & Victim Impact				
	Volume change yr on yr <sup>11</sup>	3 year Trend <sup>12</sup>	Comparison #1 West Kent <sup>13</sup>	Comparison #2 County <sup>14</sup>		Community concern <sup>15</sup>	Level of harm <sup>16</sup>	Can SMP add value? <sup>17</sup>	Total score	Priority Rank
Anti-Social Behaviour	0	0	5	3	8					
Domestic abuse: number	5	5	5	3	18					
Domestic abuse: % repeat	5	5	3	3	16					
Drug offences	0	5	3	5	13					
Re-offending rate	5	N/A	3	3	11					
Burglary – Dwelling	0	5	3	0	8					
Burglary - Other	0	0	3	0	3					
Criminal damage	3	3	5	3	14					
Theft from motor vehicle	5	5	3	3	16					
Theft of motor vehicle	0	5	3	3	11					
Violent crime	5	5	3	3	16					
Sexual offences	5	5	5	3	18					
Violence Against the Person	5	5	5	3	18					
Theft & Handling stolen goods	5	3	5	3	16					
Robbery	0	5	5	3	13					
Shoplifting	5	5	5	5	20					
Accidental fires	5	5	5	5	20					
Deliberate fires	5	3	5	3	16					
Metal Theft	0	0	5	3	8					
KSI casualties all ages	5	5	5	5	20					
All casualties under16 yrs	5	5	5	3	18					

<sup>11</sup> If volume increased 2013/14 on 2012/13 = 5, if decreased = 0, if stayed same = 3;

<sup>12</sup> If 3 year trend increasing = 5, if decreasing = 0, if broadly same/level over 3 yrs = 3

<sup>13</sup> Based on per 1,000 population figure compared to other 3 West Kent districts: Score 5 if worst, 0 if best, 3 if either 2<sup>nd</sup> or 3<sup>rd</sup>

<sup>14</sup> Based on per 1,000 population figure compared to other 11 Kent districts: 5 if in bottom 3, 0 if in top 3, 3 if between 9<sup>th</sup> to 4<sup>th</sup>

<sup>15</sup> Scored 0 – 5 using information gathered from a variety of community, parish and interest group meetings

<sup>16</sup> Scored 0-5 according to assessment of impact of crime on community

<sup>17</sup> Scored 0-5 according to assessment of partnership working adding value above and above agencies working individually

## 5.2 National and Local Emerging Issues 2015-2016

### 5.2.1 Introduction

The UK economy is no longer contracting at the rate seen in 2008/09, and most economic indicators show that growth has returned. This is reflected in the local economy which has recovered well. Maidstone's unemployment rate (as at September 2014) of 1.3% (1.8% in 2013 and 2.5% in 2012) is lower than the county average (1.8%) and much lower than the national rate (2.2%). In September 2014 there were 1,257 unemployed people in Maidstone which is 5.6% lower (75 fewer people) than August 2014 and 37.3% Lower (748 fewer unemployed people) than September 2013.

Unemployment rates vary across the district. The lowest unemployment is in Detling and Thurnham ward where 0.4% of the working age population are unemployed. The highest rate is in High Street ward where 3.0% of the working age population are unemployed.

The majority of those unemployed are aged 18-24 years old. In Maidstone, 18-24 year olds account for 24.3% of all of those unemployed and in Kent the proportion is 26.5%. More information is provided in Chart 3.

**Table 3: Unemployment rates**

District	Total unemployed as at September 2014	Resident based rate %	Change since previous month		Change since last year	
			Number	%	Number	%
Maidstone	1,257	1.3%	-75	-5.6%	-748	-37.3%
Kent	16,162	1.8%	-622	-3.7%	-7,165	-30.7%
Great Britain	870,863	2.2%	-37,028	-4.1%	-391,876	-31.0%

Source: NOMIS - Claimant Count

### 5.2.2 Anti-social Behaviour, Crime and Policing Act 2014

The Anti-social Behaviour, Crime and Policing Act 2014 gained Royal Assent on 13 March 2014. The Act brings a number of changes to the tools and powers available to organisations, agencies and practitioners who tackle Anti-social Behaviour.

The overarching aim of the Act is to provide more effective powers to tackle anti-social behaviour, protect victims and communities and treat the underlying behaviour of perpetrators. The Act streamlines and simplifies 19 existing powers, replacing them with six new ones which will enable the police, local authorities and others to respond quickly and effectively to anti-social behaviour.

Two further changes are the Community Trigger and Community Remedy which it is hoped will empower victims and communities by giving them a greater say in the outcome of their reports and how agencies respond to complaints of anti-social behaviour.

#### The Community Trigger

What form the Community Trigger takes depends on partnership consultation, but it is based around lack of action by agencies. When agencies fail to work together, the Community Trigger can be invoked by individuals, agencies and community groups. Kent CSU is consulting with District CSU partnerships to ensure the most effective Community Trigger process is developed for adoption by Districts.

## **The Community Remedy**

This is a list of actions providing suitable remedies/sanctions, other than prosecution. The list is decided upon jointly by the Kent Police and Crime Commissioner and Chief Constable after consultation with district CSUs, and the community remedy adopted must have victim agreement.

### **5.3 Local Community Safety Priorities**

This Strategic Assessment's first objective is to identify any crime and disorder trends, which can then be used to inform the priority planning for year 2015/16. This is done by analysing data and intelligence reports from the previous year, which is usually 1 October 2013 to 30 September 2014, to produce recommended priority areas the data are telling us are a concern. The priorities are then compared with other areas and ranked against a number of factors, including volume, trend over time, resident's concerns and how much it is felt the partnership can influence – see chart section 5.1. This is then reviewed by our stakeholders, to help guide practitioners in formulating actions that they feel will have an impact on each priority.

Intertwined through each of the emerging themes are the three common threads of: Targeting prolific offenders/repeat locations; Safeguarding vulnerable and young people; Prevention and early intervention. The following areas were identified by this process and are recommended as emerging priorities for the Safer Maidstone Partnership.

#### **5.3.1 Violent Crime**

The Home Office defines violent crime as robbery, sexual offences, and a group of Violence Against the Person (VAP) offences ranging from assault without injury, through wounding, to homicide. Violent crime costs society around £13 billion annually in England and Wales, of which £4 billion is incurred by the NHS and within the Criminal Justice System. In addition, more than 45% of violent offenders are thought to be under the influence of alcohol and young men are at almost four times greater risk of being a victim of violence than the rest of the adult population.

Looking specifically at violence against the person offences, in the period October 2013 to September 2014, crimes in this category saw a county-wide increase of over 30% (5,468 additional offences), although the caveat on page 3 applies. In Maidstone, violence against the person increased from 1,889 offences in 2012/13 to 2,349 offences in 2013/14 (+24.4%), which placed Maidstone is 6<sup>th</sup> in the county. For the year April to December 2014, at ward level, High Street Park Wood and Fant wards recorded the highest volumes of violence against the person with 574 and 163 and 152 recorded crimes respectively. These 3 wards account for 43% of all violent crime in the borough.

##### **(i) Domestic Abuse**

The cross-government definition of domestic abuse is:

*'any incident or pattern of incidents of controlling, coercive, threatening behaviour, violence or abuse between those aged 16 or over who are, or have been, intimate partners or family members regardless of gender or sexuality. The abuse can encompass, but is not limited to: psychological, physical, sexual, financial, emotional.'*

It is known that domestic abuse is one of the most under reported crimes: the Crown Prosecution Service reports that women on average experience an average of 35 incidents of domestic abuse before reporting an incident to the police. Nationally, domestic abuse represents approximately 25% of all violent crime. National figures for England and Wales from 2010/11 estimate that 7% of women aged 16-59 were victims of domestic abuse in the past year, as were 5% of men. Extrapolating this to Maidstone's female population aged 16-59 yrs would suggest that over 3,000 women

are victims of domestic abuse each year. Using this locally derived figure compared to actual recorded domestic abuse incidents in Maidstone (2,042) suggests that only around two thirds of domestic violence incidents were reported in 2013/14.

In Maidstone, there are on average 39 domestic abuse incidents reported to the police each week. Per 1,000 population, Maidstone has the 5<sup>th</sup> lowest rate of domestic abuse incidents and 5<sup>th</sup> lowest percentage of repeat victims in the county. Of the total reports, a quarter (25.1%) are repeat incidents.

It is widely recognized that increased recorded incidents of domestic abuse are not necessary indicators of a worsening situation. Since domestic abuse is such an under-reported crime increased reports indicate that DA victims feel more confident to come forward to report the abuse they are suffering. Further analysis of local postcode data, the highest volumes or hotspots can be seen primarily in the Park Wood, Shepway North, High Street, East and Fant wards

**Due to the high levels of domestic abuse and repeat incidents, recommendation is made that Violent Crime (domestic abuse) remains as a priority for the partnership, focusing on those areas with frequent reports of domestic abuse.**

#### **(ii) Maidstone's Night-Time Economy (NTE)**

Maidstone has the largest night time economy in Kent and prides itself on ensuring that visitors to the town's entertainment venues are as safe as possible. Given the changes in crime recording (see page 3), the real increase in total violent crime is estimated to be between 4 to 8%, rather than the actual year on year increase of 23% the data now indicates. A county-wide comparison shows Maidstone is middle ranked (6th) for violent crime per 1,000 population, and 4th amongst our West-Kent neighbours. In terms of the absolute number of violent crimes recorded, Maidstone's total of 2,612 is surpassed only by Swale (2,657) and Thanet (3,750).

Looking at hospital admissions related to violent crimes, Maidstone Hospital recorded 65 admissions of Maidstone residents for assault in 2013/14, compared to 48 the year before. Approximately 85% of all admissions to Maidstone Hospital were male and 15% female. Of those recorded, the majority of males reported to have been assaulted in the street, bar/pub or at school/college, whereas the majority of females reported to have been assaulted in the street or at home.

Despite a well managed evening economy, there is therefore a continuing need to tackle alcohol related incidents, including those arriving in the town centre already drunk - known as 'pre-fuelling'. During recent years there has been significant focus on tackling Night Time Economy crime, including violent crime and there are many examples of successful partnership projects which are in effect, including the Urban Blue Bus, Maidsafe radio, taxi marshals, purple flag scheme and Street Pastors. However, SMP are conscious that the violent crime category has shown increases, notably violence against the person from alcohol and drug related violence as part of the night time economy.

**Due to the continuing rise in violent crime in the night-time economy, recommendation is made for drug and alcohol related violence in the night time economy to remain a priority for the partnership.**

#### **5.3.2 Anti-Social Behaviour**

Anti social behavior is defined as: *'acting in a manner that caused or was likely to cause harassment, alarm or distress to one or more persons not of the same household as the perpetrator'*.

Over the last three years there has been a decrease in the number of reports of ASB by just over 25%. However, Maidstone still has the 5th highest number of reported incidents in the County (after Thanet, Canterbury, Swale and Dover). Analysis of ASB across Maidstone highlights that 3 wards (High Street, Fant, and Park Wood) account for nearly 40% of ASB incidents in the borough. In surveys, Maidstone residents regularly feature ASB as one of the most frequently identified issues and this, together with geographic hot spots in the wards identified above, continue to be relevant as areas of concern.

**Due to the high volumes of anti-social behaviour in parts of the borough, and the impact ASB has on residents, recommendation is made that ASB continues as a priority for the Partnership.**

### 5.3.3 Substance Misuse

The UK has amongst the highest rates of young people's cannabis use and binge drinking in Europe. In the UK there are some 13,000 hospital admissions linked to young people's drinking each year. Early drug and alcohol use is related to a host of educational, health and social problems. Offenders who use heroin, cocaine or crack cocaine are estimated to commit between a third and a half of all acquisitive crime.

In Maidstone total drug offences have reduced 8.7% or 41 incidents, but are still 20% higher than the level of three years ago and High Street ward has the highest volume of drug offences in Kent, 204 incidents or 20.9 per 1,000 population. There have been no identified seasonal trends. For alcohol related conditions, Maidstone is ranked 10th out of the 12 districts for hospital admissions due to alcohol in the county, and has the 9th worst rate of alcohol related deaths.

Alcohol drives much crime. In Maidstone nearly 800 crimes were recorded as directly alcohol related in 2012/13, out of a total of 8,457 victim based crimes (9.5%). In contrast.

New Psychoactive Substances (NPS), or so called 'legal highs' are substances designed to produce similar effects to controlled drugs, such as cannabis, cocaine or ecstasy, but are structured differently in an attempt to avoid being controlled by the Misuse of Drugs Act 1971. Legal highs are not safe and should be termed 'lethal highs'. In England in 2012 some 68 deaths were linked to legal highs. NPS use in Maidstone is on the increase, driven by the number of highly visible retail legal high outlets. In fact, Kent has more 'head shops' than anywhere outside London, and Maidstone more than anywhere else in Kent. In addition, NPS users tend to be those who are more vulnerable.

**Due to the high level of drug offences in certain wards, and the increasing prevalence of New Psychoactive Substances (NPS), recommendation is made that substance misuse including alcohol and NPS remains as a priority.**

### 5.3.4 Reducing Reoffending

Maidstone data shows that in the period 1 January to 31 December 2013 the actual re-offending rate was 1.40% higher than the predicted re-offending rate, which is the 4th best among Kent districts. As at 31 May Maidstone has the 4th highest caseload (348), or some 10.2% of the total Kent caseload.

Significant demands are placed on CSP resources by individuals who are repeat ASB offenders - particularly those who perpetrate low-level offences as a result of alcohol consumption. Reducing re-offending across the age range is a Government target for all CSP's. This is particularly important when those who have already been through

the criminal justice system commit over half of all crime. It will enable a more strategic engagement between CSP's and other local partners, such as the third sector and Local Criminal Justice Boards, in planning and commissioning services for offenders. Therefore, SMP should continue to support the work of IOM to continue to have a positive impact on the number of offences caused by repeat offenders.

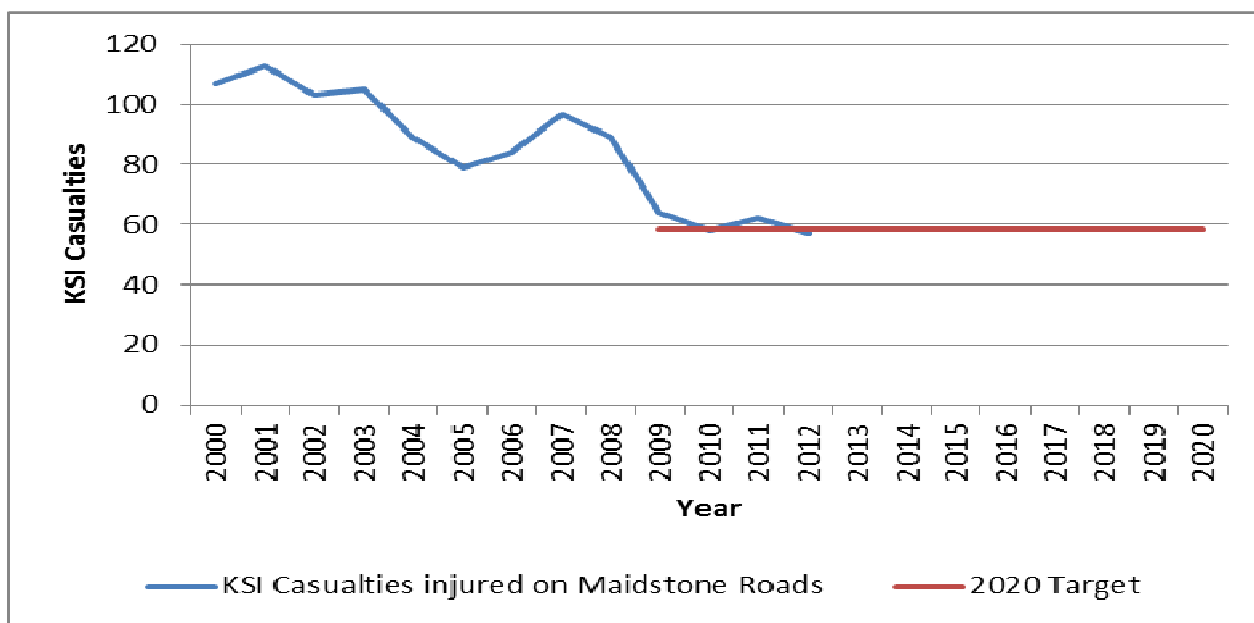
**Although the actual re-offending rate has fallen from the 2nd lowest to the 3rd lowest in Kent, recommendation is made that Reducing Re-offending remains as a priority, being a cross cutting theme across all priorities.**

### 5.3.5 Road Safety - Killed or seriously injured (KSI)

In 1994 across Kent (excluding Medway) some 73 people were killed and a further 1,170 seriously injured on Kent roads: by 2011 this had reduced to 43 persons killed, with 476 seriously injured. In 2013, there were a total of 4,252 road traffic collisions (RTCs) on Kent roads (including trunk and motorways). In these collisions there were injuries to 5,830 people of whom:

- 48 people died
- 546 road users were seriously injured
- 5,236 road users received slight injuries.

#### KSI casualties on Maidstone Roads and 2020 Target



On average, the number of people of all ages Killed or Seriously Injured (KSI) in **Maidstone** in the period 1994-98 was 115 per year. By 2009 this had reduced to 64, and by 2012 had reduced further to 57, a halving from the 1994-98 average.

However, in 2013 the number KSI in Maidstone rose slightly to 63 an increase of 10.5%. For the six month period January to June 2014 the number KSI totals 41 which forecast a year-end total KSI between 75-80.

Whilst acknowledging that Maidstone has the highest number of RTCs and casualties, when KSI casualties per 1,000 population are compared with our near neighbours, road safety is a priority across West Kent – see table below.

**Table 1. Road Safety in West Kent – KSI per 1,000 population**

Period	All ages KSI	Maidstone BC	Sevenoaks DC	Tonbridge & Malling BC	Tunbridge Wells BC
January to June 2014	Total KSI	41	37	25	27
	KSI Per 1,000 pop	0.263	<b>0.321</b>	0.206	0.234
January to June 2013	Total KSI	28	29	19	27
	KSI Per 1,000 pop	0.179	<b>0.251</b>	0.157	<b>0.234</b>

Sevenoaks DC has a higher rate of KSI casualties per 1,000 population than Maidstone in the first 6 months of 2014 and 2013, with both Sevenoaks and Tunbridge Wells boroughs having a higher rate per 1,000 population in the first half of 2013.

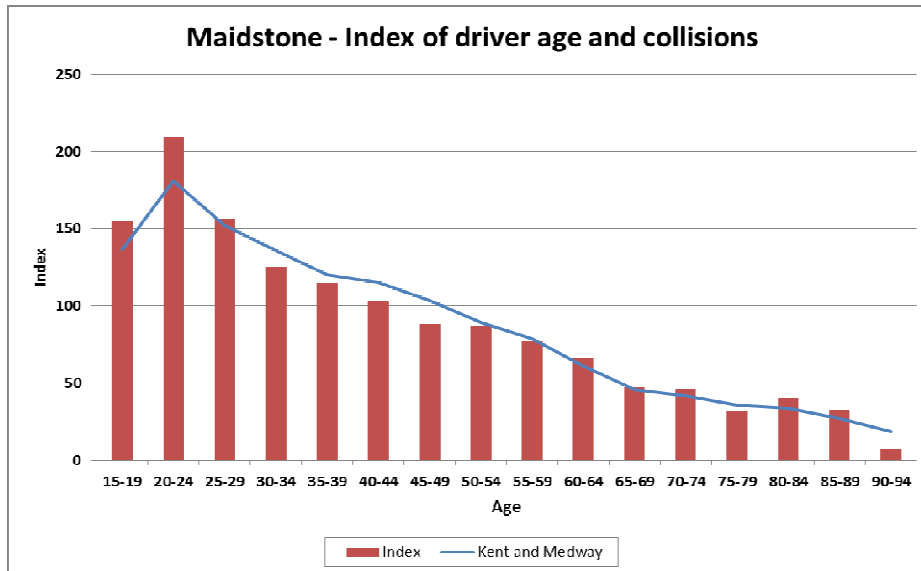
**Table 2 - Road safety in Maidstone: 2010 – 2014**

Category	2011	2012	2013	Jan-June 2014
Total casualties, All ages	651	675	643	345
KSI casualties, All ages	62	57	63	41
Slight casualties, All ages	589	618	580	304
KSI casualties <16 yrs old	7	3	3	2
KSI car drivers 17-24 yrs	6	4	5	4
KSI road users aged 65+	7	15	8	9

In 2013, total all ages casualties reduced from 2012 levels, although they are forecast to increase from 643 in 2013 to around 690 in 2014.

Road traffic is still the biggest cause of unnatural death, injury and harm to the people of Kent, especially young people aged between five and 25. Kent County Council is the Highway Authority for Kent and has a Statutory Duty under the Road Traffic Act for road safety with the aim to reduce casualties through a combination of safer road engineering and education, in conjunction with Police enforcement activity. However, road safety is not just the remit of one organisation and certain aspects such as education benefit from a partnership approach. Maidstone car user casualties over the last 5 years have consistently been above the Kent and Medway districts' average, within this the car drivers involved in the highest number of collisions were 18 year olds (124 in total). Over the period 2008 - 2012-20% of car drivers involved in crashes were aged 17-24: in 2013 young car users and their passengers accounted for 25.6% of all recorded KSI injuries. Young drivers in the 17-24 age group experience a disproportionate number of RTC's, and the collisions they have are more serious – see table below.





**Summary:**

Based on the current data for 2013/14, Maidstone has seen a 3.1% increase in all casualties compared with Kent-wide increase of 9%, and a 40.7% increase in KSI casualties against the same period last year, compared to a Kent-wide KSI increase of 26.3. However, young drivers in the 17-24 age group experience a disproportionate number of RTC's, and the collisions they have are more serious. The focus for 2015-16 will be on three user groups: young drivers aged 17-24, powered two-wheelers (p2w) riders, and teenage pedestrians (secondary school age), since these groups are over represented in the data.

**Due to killed and seriously injured figures increasing faster against the county wide increase, recommendation is made that Road Safety remains as a priority.**

**5.4 Cross Cutting Themes**

Data analysis also acknowledged that the priorities are often inter-related and has identified three distinct cross cutting themes that run through all of the priority focus areas. Actions contained within this plan are therefore built around the five identified priorities and three cross cutting themes, as shown in the chart below:

Cross cutting themes				
Anti-social Behaviour	Reduce Re-offending	Violent crime (Domestic abuse & NTE)	Road safety (KSI)	Substance Misuse (including alcohol)
Targeting prolific offenders / repeat locations				
Safeguarding vulnerable and young people				
Prevention and early intervention				

**5.5 Recommendation to Safer Maidstone Partnership**

Our priorities for this year have been distilled from a wide variety of information shared with our partners and represent the most important issues to focus on this

(2014/15) year. Based on the information in this Strategic Assessment, it is recommended that the Safer Maidstone Partnership confirm the following 2014/15 priorities based on the areas where maximum impact could be achieved given a continuing reduction in resources and capacity:

- 1. Violent Crime (specifically Domestic Abuse and Night Time Economy)**
- 2. Anti-social Behaviour**
- 3. Substance Misuse**
- 4. Reduce Re-offending**
- 5. Road Safety – Killed & Seriously Injured 17-24 year olds & pedestrians**

All the priorities will require a robust multi-agency response, but because they are important for residents and communities, achieving them will have a positive impact on people's quality of life.

## 6. Implementation and Monitoring

To ensure that the identified priorities are delivered, the Partnership will review and monitor progress as follows:

- At SMP level through quarterly Sub-Group Chair reports
- At Sub-Group level through Action Plan monitoring by Sub-Group Chairs

## 7. Strategic Assessment review date

The purpose of this document is to inform the annual SMP Partnership Plan and to assist the SMP and its partner agencies to draw up specific actions. Therefore this document is reviewed annually and agreed by the Safer Maidstone Partnership in March each year. It is also independently assessed by Kent CSU.

## 8. How to get further information

If you would like further information about the Safer Maidstone Partnership, please contact: Community Partnerships Team, 6<sup>th</sup> Floor, Maidstone House, King Street, Maidstone, Kent ME15 6JQ. Tel: 01622 602000. [www.maidstone.org.uk](http://www.maidstone.org.uk)

<p>We can provide this Assessment in large print, on tape and in Braille. For people whose first language is not English, we can arrange to have the Assessment translated into your preferred language. Please telephone (01622) 602000 for further assistance.</p>
--

### **Text service for the deaf or speech-impaired**

If you're deaf or speech-impaired, you can text Kent Police. Start the message with the word 'police' then leave a space and write your message including what and where the problem is. Send your text to 60066 (the Kent Police communications centre) and they will reply with a message.

## **Appendix 1**

### **Methodology and Information Sources**

Unless otherwise stated, data collected for this Strategic Assessment relates to the time period April 2013 to March 2014, with data for the period April to September 2014 utilised where necessary. The main body of this assessment is broken down into three sections. The first, the crime and perceptions of crime overview, gives a three year time series analysis of crime activity, anti-social behaviour, fire and road safety data, together with our position relative to the other 11 Kent district councils.

The second section looks at the current partnership priorities with emphasis on the assessment of performance against these. This is done through time series analysis since the previous assessment was undertaken and reasons for any changes in a particular issue.

The third section of this assessment, 'Emerging Issues 2014-2015 and Recommendations', further analyse the emerging potential issues identified from the performance section, with greater detail on the scope of the problem, including the scale of the problem, any reasons for changes in levels and the suggested cause of the problem including the relevance of location, time, the offender or the victim. Following this further analysis, after going through a priority selection process with key partners, a final list of recommended partnership priorities for the upcoming year is produced.

A community prioritisation process allowed for the views of the local community of what issues should be deemed an emerging priority for the local area and was gathered through the Maidstone Resident Satisfaction Survey. In addition, PCSO's and Community Safety Unit Police staff engaged with local communities at public events such as the Maidstone Mela, 36 Engineers Day, Switch on the Music and Uprockin' young people's festival. Also public opinion and those categories that are of most concern are highlighted through the quarterly Kent Crime and Victimisation Survey.

#### **Information sources**

The list below includes the details of those data sources used to inform this strategic assessment, including the agency supplying the data, the time period the data refers to and any issues surrounding the validity and reliability of the data. All information was correct at time of document production.

#### **Kent Community Safety Unit crime data – Safer Communities Web Portal**

All data provided by the County CSU is using recorded crime data provided by the Business Information Unit at Kent Police. This data places the incidents at the time at which they were recorded by the Police.

#### **Kent Police Intelligence Analysis data**

Data provided by Kent Police is 'committed' data. The 'date' used is the mid point between the earliest and latest dates that the offence could have been committed.

#### **Ambulance data**

All ambulance pickup submissions have been compiled by the County Community Safety Unit utilising data supplied by the South-East Coast Ambulance service. This data has been cleansed and sanitised for use on CrimeView and, due to NHS data protection requirements, some data loss does occur within the cleansing process. (E.g. ward-level occurrences of 4 or less are suppressed and shown as zero.)

## Other data sources

Data and information used in producing this Assessment has been provided, directly or otherwise, from the following organisations:

Association of Chief Police Officers  
Association of Police Authorities  
Association of Public Health Observatories (PHO's)  
Children, Family and Education, KCC  
Choices DA Services (formerly North Kent Women's Aid)  
Clean Kent Partnership  
Community Health Profiles  
East Coast Kent PCT  
Every Child Matters  
Health & Social Care Information Centre  
Home Office  
Institute of Alcohol Studies  
Kent & Medway Safety Camera Partnership  
Kent Adult Social Services  
Kent Community Support Unit  
Kent Community Wardens  
Kent County Council  
Kent Drug and Alcohol Action Team  
Kent Fire & Rescue Service  
Kent Highways  
Kent Police  
Kent Probation  
Kent Public Health Information Library  
Kent Youth Offending Service  
Kenward Trust  
Local Alcohol Profiles for England  
London Health Observatory  
NHS West Kent  
Nomis  
North West Public Health Observatory  
Office for National Statistics  
ONS Labour Market Statistics  
Project Fusion  
South East Coast Ambulance Service (SECAmb)  
South East England Public Health Observatory  
Supporting People  
The NHS Information Centre  
Trading Standards  
Youth Offending Services

## Appendix 2

### **Case Study 1 – Vulnerable Mother and Son – Kent Police**

The Community Safety Unit received a call from an elderly mother and her son. When the property was visited, their living conditions were appalling with no hot water, no heating, no cooking facilities.

The couple had their curtains closed all day and night as they feared people looking into their windows as they had experienced ASB problems previously. Their clothes were dirty and they both looked unkempt. The furniture was old, dirty and broken.

#### **Action taken:**

The CSU Police worked closely with Golding Homes to support a move and worked with the housing provider, removal company, social services and a local church. The church provided furniture, cutlery, crockery, cooking utensils, duvets, sheets, covers, curtains, carpet tiles and food. Once the family had moved, CSU staff put together beds, made the beds up, hung curtains and arranged KCC Social Care to support the family with their finances and correspondence by supporting the son to sort out his finances, pay all arrears. Welfare visits have been made by police and the mother and son are doing well.

### **Case Study 2 – Cold Calling – Kent Community Warden Service**

A Warden was delivering leaflets to the elderly in Lenham for an up coming event when he noticed a white van on a driveway of a bungalow. There was a young lady sitting in the driving seat. As Martin approached the van the driver got into the drivers seat, started the engine and asked Martin if he was issuing parking tickets. As the van drove off the Warden made a note of the registration number and noticed that he had left some equipment on the drive. This included a compressor, a plastic dustbin, a jet wash type lance some hose and a bucket of dry mortar mix. Some of the drive had already been cleaned.

#### **Action taken:**

The Warden was concerned and decided to speak to the resident who was retired, disabled and lived on his own. When asked if he knew the men who were cleaning his drive, he said he had been cold called and asked if he wanted his drive cleaned for £75. Written notice was not given by the trader. The householder also said that when he told the trader he would have to write a cheque the trader said he only wanted cash. The Warden decided to call the local PCSO who was working in the village. The PCSO and Warden gathered further evidence as the incident unfolded, and notified KCC trading Standards who confirmed that the tradesmen involved were all known. In an excellent example of partnership working the resident was saved from paying for work he did not want, and from future losses.

### **Case Study 3 – Tackling deliberate arson in Marden - KFRS case studies**

After a number of call outs to small deliberate fires, thought to be started by youths in the area, the fire station contacted the Youth Engagement Team (YET) who worked with crews to address the problems.

#### **Action taken:**

- Areas where youths congregated were identified and this information was combined with other intelligence.
- This information was compared to the location of fires and discussed with the local community warden and PCSOs.
- An initial intervention was conducted by two officers from the YET team who went to these areas with the local crews and spoke with around 20 young people about

the dangers of what they had been doing, and the consequences of their actions. This group included the youths thought to be responsible for the fires.

- A follow up intervention was conducted a few weeks later, also involving members of the Community Engagement Team and of two PCSOs. A fire engine was taken along and this time officers engaged with around 40 youths. The conversation was kept light-hearted and involved breaking down any barriers with them, sitting in the engine, trying on fire gear and allowing 'hands on' activity with the hose. All the time this was happening, safety messages were being shared with the young people.

"Prior to the intervention we were attending small rubbish fires in the village on a regular basis, at least weekly. Since their intervention as yet we haven't had any incidents of this type" - *Jonathan Nightingale, Crew Manager, Marden*

#### **Case Study 4 – Financial Scam – KCC Warden Service**

A call was received by the Warden service from Barclays Bank who had concerns about a customer wanting to withdraw £9,000. Barclays were asked if they could keep the customer there and a Warden attended the bank. The Warden spoke to the customer and it was soon obvious that he had been drawn into many scams and had already lost a considerable amount of money. Barclays were able to put a stop on £4,000 that he had tried to transfer earlier. The Warden asked if she could visit him and made an appointment for the next day.

During the visit the Warden discovered that the customer had many issues: he was suffering from a brain tumour and his 93 year old mother was in hospital but dependent on him when she was at home. It became evident that he had been spending on average between £800-£1,000 a month on various scams for 5 years and in total had lost between £40,000-£60,000 pounds.

#### **Action taken:**

The Warden worked with Barclays got his bank account changed stopping all direct debit charges, and worked with B.T. got his telephone number changed to stop the scam callers. She also contacted relatives to make them aware of what had been happening and contacted Social Services to arrange for care for his mother on her return to the home to take pressure of him. The Warden then contacted the Fraud Squad who investigated and so far he has had £13,000 pounds back. This is a good example of joined up partnership working not only with public services but the private sector too.

## Appendix 2

### Maidstone demographic and economic summary

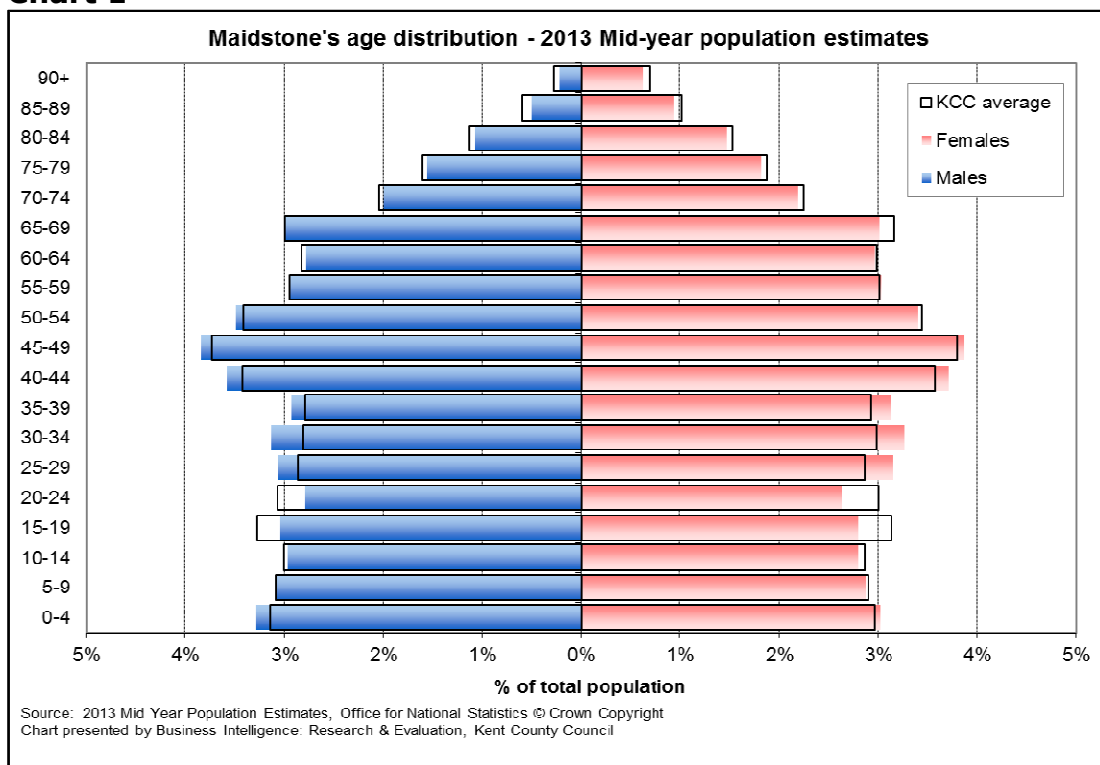
#### 1. Population profile

The latest population figures from the 2013 Mid-year population estimates show that there are 159,300 people living in Maidstone Borough<sup>18</sup>. This population size makes Maidstone Borough the largest Kent local authority district area.

75% of the borough's population live in the Maidstone urban area with the remaining 25% living in the surrounding rural area and settlements<sup>19</sup>.

The age profile of Maidstone's population is shown in Chart 1. Overall Maidstone has a very similar age profile to the county average. Maidstone has a slightly higher proportion of people in the 25-54 age groups, and a smaller proportion of teenagers and retired people compared to the KCC average.

**Chart 1**



Over the last 10-years Maidstone's population has grown by 12.8% (an additional 18,100 people)<sup>20</sup>. This is the third highest rate of growth of any Kent district. The population of the borough is forecast to grow at slower rate over the coming years with current forecasts suggesting a 15% growth over the next 15-years<sup>21</sup>. This rate of growth is higher than the county average (13%).

This forecast is based on KCC's assessment of the district authority's future housing targets as at September 2014. Such targets will be subject to changes as district authorities develop their Local development framework.

*Further population information:*

<sup>18</sup> 2013 Mid-year population estimates, Office for National Statistics

<sup>19</sup> 2012 Ward level population estimates (experimental), Office for National Statistics

<sup>2</sup> Time series of Mid-year population estimates 1995 - 2013, Office for National Statistics

<sup>21</sup> KCC Strategy forecasts (Oct'2014). Research & Evaluation, Kent County Council



## 2. Ethnic profile

94.1% of Maidstone's population is of white ethnic origin with the remaining 5.9% being classified as of Black Minority Ethnic (BME) origin<sup>22</sup>. The proportion of Maidstone's population classified as BME is lower than the county average of 6.3%.

The largest ethnic group in Maidstone is White British, with 89.1% of residents from this ethnic origin. Within the BME population, the largest ethnic group is Other Asian (accounting for 1.6% of all residents) with the second largest group being residents of Indian accounting for 0.8% of all residents).

*Further ethnicity information:*

<http://www.kent.gov.uk/about-the-council/information-and-data/Facts-and-figures-about-Kent/equality-and-diversity-data>

## 3. Deprivation

The Indices of Deprivation 2010 provide a measure of deprivation at both district and sub-district (Lower Super Output Area) level, relative to other areas in England<sup>23</sup>. Table 1 overleaf presents the national and county rank of Maidstone based on the 2010 Index and also shows how the rankings have changed since the 2007 Index<sup>24</sup>.

In 2010 Maidstone Borough was ranked as the 9<sup>th</sup> most deprived district in Kent (out of 12 districts, with the most deprived being ranked 1). Nationally, Maidstone ranks 198<sup>th</sup> out of 326 local authority districts in England. This rank places it within England's least deprived half of authorities.

The county rank of Maidstone has remained at number 9 between 2007 and 2010. On the national ranking, Maidstone has moved up 8 positions from 225<sup>th</sup> in 2007 to 217<sup>th</sup> in 2010. This indicates that Maidstone's level of deprivation has increased, relative to other areas in England.

**Table 1 - National and county rank of Kent districts based on the 2007 and 2010 Indices of Deprivation (table displayed based on 2010 rank)**

LA CODE	District	2007 Index		2010 Index		Change in rank*	
		National rank (out of 326)	KCC rank (out of 12)	National rank (out of 326)	KCC rank (out of 12)	National position	KCC position
29UN	Thanet	60	1	49	1	11	0
29UL	Shepway	114	3	97	2	17	1
29UM	Swale	108	2	99	3	9	-1
29UE	Dover	142	5	127	4	15	1
29UG	Gravesham	132	4	142	5	-10	-1
29UC	Canterbury	180	7	166	6	14	1
29UD	Dartford	170	6	175	7	-5	-1
29UB	Ashford	206	8	198	8	8	0
29UH	Maidstone	225	9	217	9	8	0
29UQ	Tunbridge Wells	250	10	249	10	1	0
29UP	Tonbridge & Malling	256	11	268	11	-12	0
29UK	Sevenoaks	270	12	276	12	-6	0

\* A minus change in rank illustrates that a district has moved down the rankings and is therefore now less deprived relative to other LAs in England

Source: Indices of Deprivation, Communities and Local Government

<sup>22</sup> 2011 Census, Office for National Statistics

<sup>23</sup> Indices of Deprivation 2010, Department for Communities and Local Government

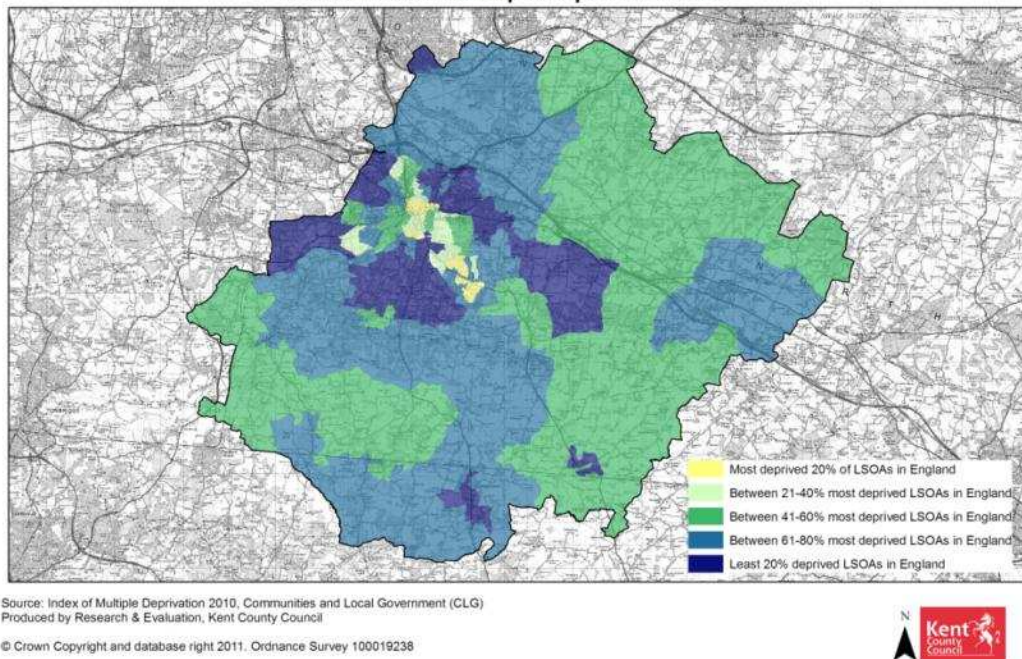
<sup>24</sup> Based on the indicator 'national rank of average score'

The levels of deprivation vary across the borough. Parts of Maidstone are within England's top 20% deprived of areas and yet other parts are within England's least 20% deprived of areas. More detail is shown on Map 1.

The greatest levels of deprivation are found within the areas of Park Wood and High Street. Neighbouring some of the most deprived areas of Maidstone are areas with relatively low levels of deprivation. The least deprived areas of Maidstone are found in the areas of Bearsted.

### Map 1

Deprivation Rank of areas within Maidstone based on the overall Index of Multiple Deprivation 2010



Further deprivation information: <http://www.kent.gov.uk/about-the-council/information-and-data/Facts-and-figures-about-Kent/deprivation-and-poverty>

### 4. Economy, Employment and Skills

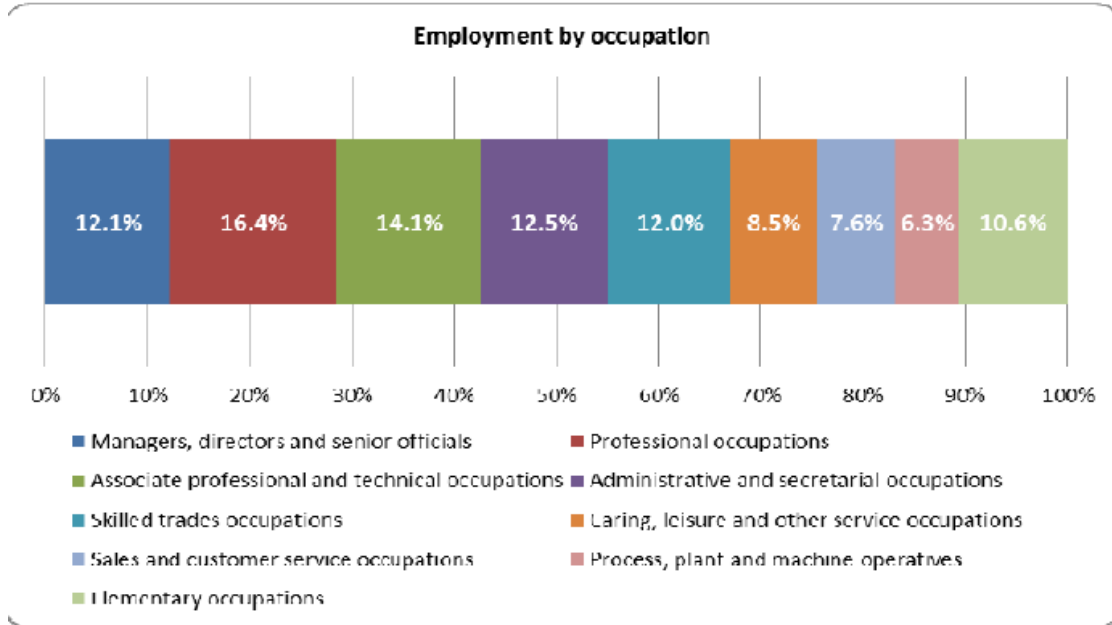
Out of a total population of 157,300, some 99,400 (62.4%) people are aged 16-74 and considered of working age. 82.6% of people are economically active, of which 78.9% of people are in employment. Whilst the wage gap between work based and resident based earning is currently £59.60, there has been a reduction in the difference between workplace and resident earnings over the last year – with the gap shrinking by £5.80 compared to the previous year. Male resident based earnings per week are £122 higher than female resident based earnings.

The main industries in Maidstone are: Construction, followed by Professional, Scientific and Technical Industries and Retail. The Borough also has a growing medical sector. Maidstone town centre is home to both Kent County Council and Maidstone Borough Council offices with 19,700 residents employed by the public sector. The graph shows employment by occupation for all people aged 16-74 in Maidstone. The largest single group in the borough is professional occupations.

Six of the Lower Super Output Areas in Maidstone, are areas that are amongst the top 20% of most deprived areas in England. 15.1% of children under 16 in Maidstone are living in poverty; this is lower than the figure for Kent which is 20.6%. In the Borough, 2% of households do not have central heating and 16% of households do not have a car or a van, these are lower than the averages for England overall. In

addition 10.9% of the borough children receive free school meals compared to 13.8% in Kent overall.

For the academic year 2011/12, 69% of Maidstone pupils achieved five or more GCSEs grades A\* to C including Maths and English, this is the third highest figure in out of the Kent districts. Maidstone has fairly a higher proportion of people educated to NVQ level 4 or higher, even though this declined between 2011 and 2013 by 4.6%.



**Mosaic profile of residents**

Mosaic Public Sector is a classification system designed by Experian to profile the characteristics of the UK population. Each household in the UK is classified as belonging to one of 15 groups and 66 types. The 15 groups have been named A to O.

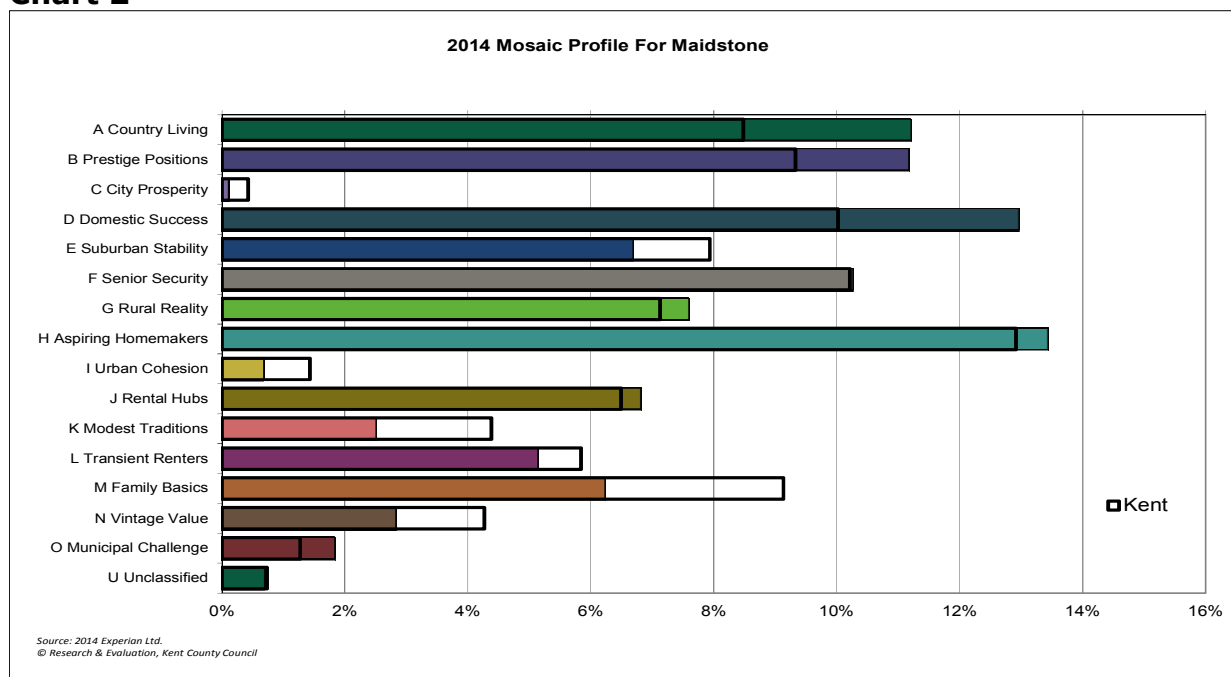
These groups identify clusters of individuals and households that are as similar as possible to each other, and as different as possible to any other group. They describe the residents of a postcode in terms of their typical demographics, their behaviours, their lifestyle characteristics and their attitudes. The characteristics of the Mosaic groups are presented in Table 2 overleaf.

**Table 2**

	Definition
<b>A</b>	- Country Living - Well off owners in rural locations enjoying the benefits of Country life
<b>B</b>	- Prestige Positions - Established families in large detached homes Living upmarket lifestyles
<b>C</b>	- City Prosperity - High status city dwellers living in central locations and persuing careers with high rewards
<b>D</b>	- Domestic Success - Thriving families who are busy bringing up children and following careers
<b>E</b>	- Suburban Stability - Mature suburban owners living in settled lives in mid-range housing
<b>F</b>	- Senior Security - Elderly people with assets who are enjoying a comfortable retirement
<b>G</b>	- Rural Reality - Householders living in expensive homes in village communities
<b>H</b>	- Aspiring Homemakers - Younger households settling down in housing priced within their means
<b>I</b>	- Urban Cohesion - Residents of settled urban communities with a strong sense of identity
<b>J</b>	- Rental Hubs - Educated young people privately renting in urban neighbourhoods
<b>K</b>	- Modest Traditions - Mature homeowners of value homes enjoying stable lifestyles
<b>L</b>	- Transient Renters - Single people privately renting low cost homes for the short term
<b>M</b>	- Family Basics - Families with limited resources who have to budget to make ends meet
<b>N</b>	- Vintage Value – Elderly people reliant on support to meet financial or practical needs
<b>O</b>	- Municipal Challenge – Urban renters of social housing facing an array of challenges

The Mosaic profile of residents in Maidstone district is shown in Chart 2 alongside the county profile.

**Chart 2**



## Unemployment

Maidstone's unemployment rate is currently 1.3%. This is slightly lower than the county average of 1.8% and considerably lower than the national average of 2.2%<sup>25</sup>.

In September 2014 there were 1,257 unemployed people in Maidstone which is 5.6% lower (75 fewer people) than August 2014 and 37.3% Lower (748 fewer unemployed people) than September 2013.

**Table 3: Unemployment rates**

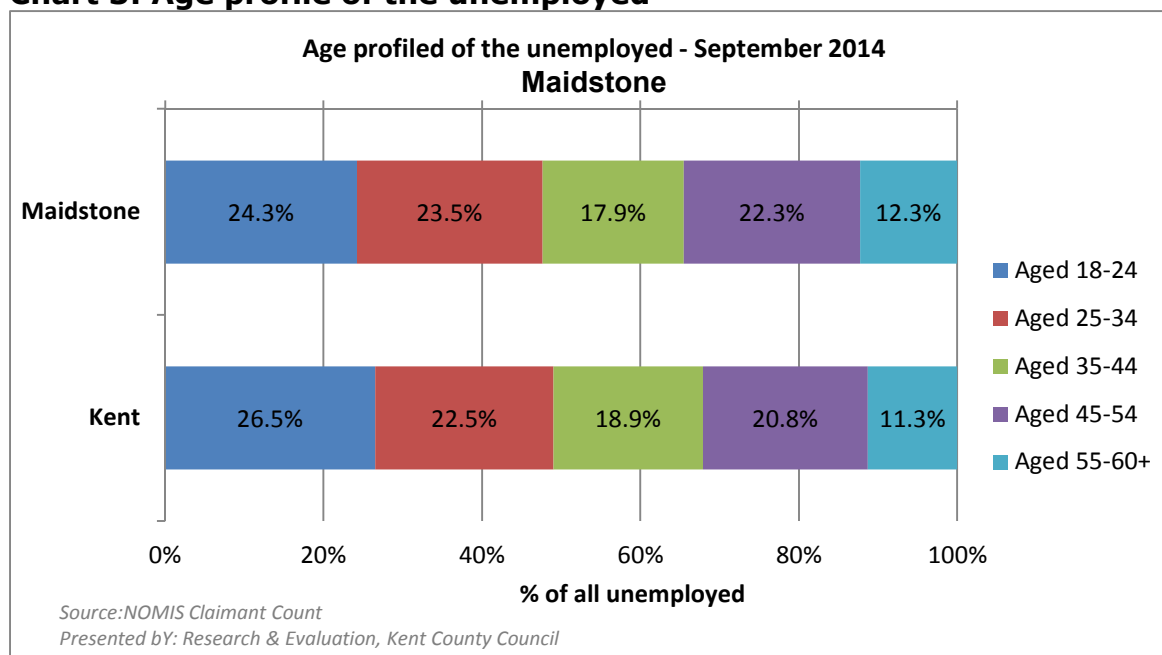
District	Total unemployed as at September 2014	Resident based rate %	Change since previous month		Change since last year	
			Number	%	Number	%
Maidstone	1,257	1.3%	-75	-5.6%	-748	-37.3%
Kent	16,162	1.8%	-622	-3.7%	-7,165	-30.7%
Great Britain	870,863	2.2%	-37,028	-4.1%	-391,876	-31.0%

Source: NOMIS - Claimant Count

Unemployment rates vary across the district. The lowest unemployment is in Detling and Thurnham ward where 0.4% of the working age population are unemployed. The highest rate is in High Street ward where 3.0% of the working age population are unemployed.

The majority of those unemployed are aged 18-24 years old. In Maidstone, 18-24 year olds account for 24.3% of all of those unemployed and in Kent the proportion is 26.5%. More information is provided in Chart 3.

**Chart 3: Age profile of the unemployed**



*Further unemployment information:*

<http://www.kent.gov.uk/about-the-council/information-and-data/Facts-and-figures-about-Kent/economy-and-employment>

<sup>25</sup> Unemployment rates as at September 2014, Office for National Statistics

**Out of Work Benefits**

Out of work benefits claimants includes those people aged 16-64 who are claiming a key Department of Work and Pension (DWP) benefit because they are not working. This definition is used as an indicator of worklessness.

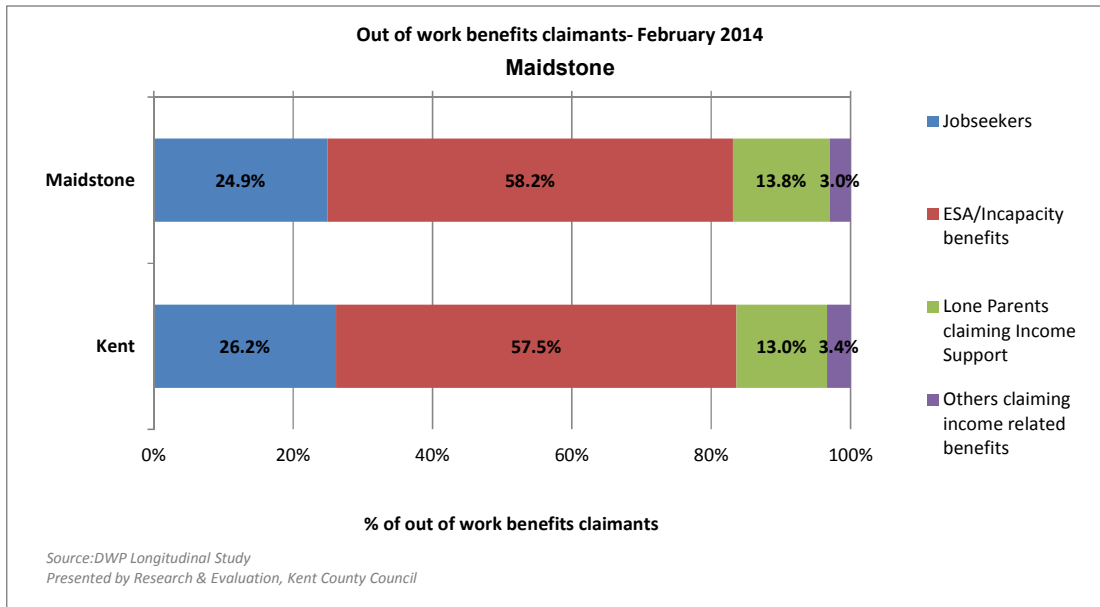
As at February 2014, there were 7,300 people in Maidstone who were claiming out of work benefits. This is 7.4% of all 16 to 64 year olds and is lower than the county average of 9.2%.

The largest proportion of those who are out of work are claiming Employment Support Allowance or Incapacity Benefit i.e. they have a health condition which is restricting the sort of work that they usually do.

A lower proportion is classified as jobseekers (claimants of Jobseekers Allowance) than the average for the KCC area. 13.8% of those who are workless in Maidstone are lone parents who are claiming Income Support. This is slightly higher than the KCC rate of 13.0%<sup>26</sup>.

Chart 4 shows out of work benefits claimants by main reason for which they are claiming.

**Chart 4: Out of work benefit claimants**



As with Unemployment rates, out of work benefit claimant rates also vary across the borough. The lowest proportion of out of work benefit claimants is in Detling and Thurnham ward where 3.0% of the working age population are claiming. The highest rate is in Park Wood ward where 18.6% of the working age population are out of work.

*Further benefits information:*

<http://www.kent.gov.uk/about-the-council/information-and-data/Facts-and-figures-about-Kent/economy-and-employment>

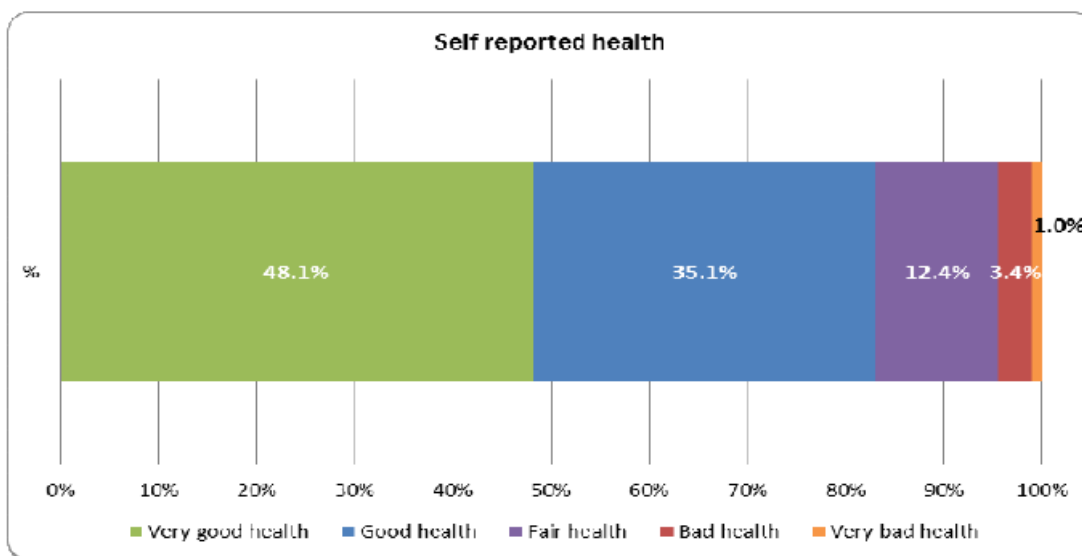
<sup>26</sup> DWP Longitudinal Study: February 2014

## Health

Life expectancy at birth in Maidstone for both men and women match the overall figures for Kent at 79.9 years for men and 83.4 years for women. However at the age of 65, life expectancy for a Maidstone resident is slightly lower for both genders when compared to the overall figures for Kent.

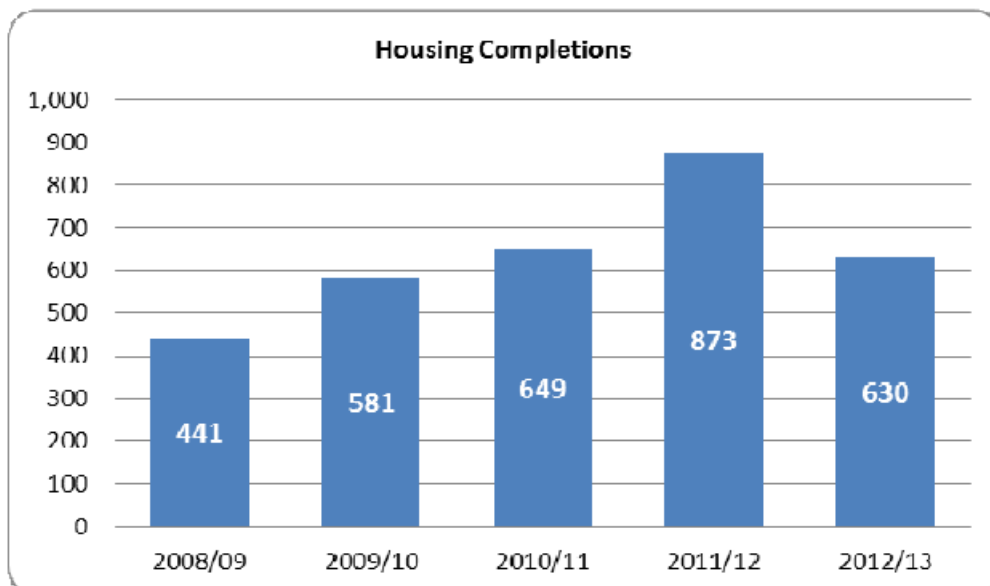
The graph below shows the self-reported health from the 2011 census, which shows that 4.4% of people feel they are in bad or very bad health, the figure for England overall is 5.5%. 15.8% (24,505) of people in Maidstone consider themselves to have a limiting life long illness and 9,700 (6.1%) people in Maidstone claim a disability benefit.

Of those aged over 65, 4,930 claim either disability living allowance or attendance allowance compared to 1,610 of those age 24 and under. 10% (15,561) of Maidstone residents provide some form of unpaid care each week and 1.3% (1,370) of those aged 16 and over currently claims a carer's allowance.



## Housing

With 66,982 homes Maidstone has the greatest number of dwellings in the County and in the four years from 2009 to 2013 Maidstone district increased its dwelling stock by 4.65%. Maidstone has the greatest number of both detached and semi-detached properties out of the districts in Kent: taken together they amount to 46% of the districts' housing stock, which is significantly higher than the proportion for England overall of 40%. Maidstone has a lower proportion of flats/maisonettes compared to all England with this type of property accounting for 16% in the borough compared to 22% nationally.



Maidstone has a higher proportion of people that either own their home outright or with a mortgage at 70% compared to England where the proportion is 63%. In turn, the proportion of people living in social rented accommodation is lower than for England at 13% compared to 18%. In October 2013 there were 414 long term vacant dwelling in Maidstone accounting for 8% of all long term vacant dwellings in Kent. Long term vacant dwellings account for 0.62% of the boroughs housing stock, lower than the proportion for England overall which is 0.93%. The majority of properties (54%) in the borough are in Council Tax bands C and D. Maidstone has a significantly lower proportion of properties in bands A and B when compared to both Kent and England, with just 19% of dwelling in the borough in these bands compared with 29% in Kent and 44% in England. This is likely due to the proximity of the borough to London coupled with higher than average house prices in the South East when compared to other regions; Sevenoaks which is closer to London has just 9% of its dwelling stock within these bands.

Average house prices in the borough are lower than that for the South East region for all property types but higher than the average for Kent, as the table shows, for semidetached properties. In terms of Council tax Maidstone has the third highest average rate per dwelling for council tax (band D) in Kent for 2014/15 (£1536 including parish precepts).

2013	Maidstone	Kent	South East
Detached	£375,477	£393,786	£456,839
Semi Detached	£232,300	£227,986	£267,092
Terraced	£180,686	£188,016	£220,579
Flat/ Maisonette	£134,435	£150,544	£172,293
<b>All</b>	<b>£236,525</b>	<b>£246,121</b>	<b>£286,032</b>

### Local context - Maidstone the place

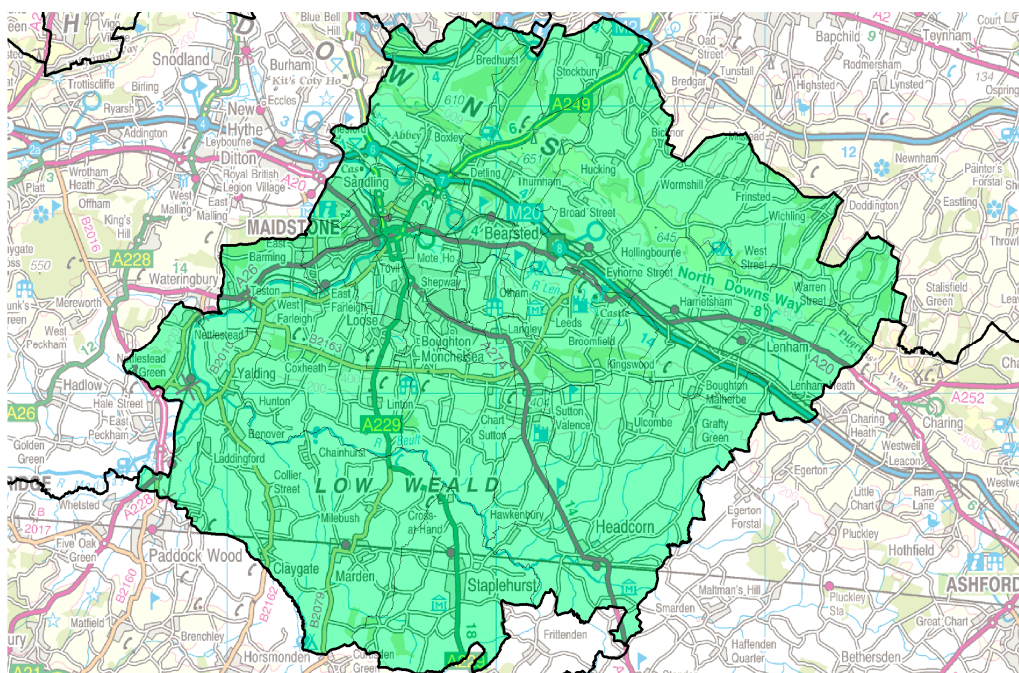
Maidstone Borough, which covers 40,000 hectares, sits at the heart of Kent, positioned between London and the Channel ports and is home to 159,300 people. Maidstone, as the County Town of Kent, is the administrative and retail capital. The Borough combines the services provided by a large urban area, with excellent schools, shopping and a general hospital, with a very attractive rural hinterland, which includes



the Kent Downs Area of Outstanding Natural Beauty (ANOB) and thriving villages. Housing in Maidstone Town has traditionally been considered relatively affordable compared to the south east average, but this is not the case in rural Maidstone and for those on average or low incomes.

Maidstone has the largest town centre shopping offer within Kent with approximately 700 shops, 75 cafes and restaurants, employing some 4,400 people. The Borough also boasts the largest night time economy in Kent, creating £75 million a year and employing around 1,500 people. The Safer Maidstone Partnership has fostered close working with the Police, Street Pastors, Urban Blue Bus, and Town Centre Management to ensure that Maidstone has a safe night time economy. The SMP's approach to ensuring Maidstone is a safe place to socialise has resulted in much positive press and TV coverage.

## Map 2: The Maidstone borough area



Maidstone is an exceptionally green Borough with a number of parks, the largest of which is Mote Park, which is Grade II on the English Heritage Register of Historic Parks, and has been voted the nations second most favourite park. Maidstone Borough is considered a good place to live and work with high rates of employment, relatively low levels of adults claiming incapacity benefits and a higher proportion of residents who have a degree than the South East average.

Larger numbers of people commute into than out of the Borough. The Borough has a very mixed business sector with large numbers of small and medium size businesses with particular strengths in professional services (law and accountancy) and construction. There is a growing media industry led by Maidstone Studios and the Kent Messenger Group. Maidstone has an extensive further education campus (Mid Kent College) and a higher education offer with Mid Kent College seeking to increase their range of courses and facilities.

Residents living in the Borough have relatively high wages (although many higher earners commute out of the Borough to achieve these). Maidstone came out as the top destination for business in the 2010 study of locations for business in Kent.

Transport links are generally good although rail travel could still be improved. 2011 saw the introduction of High Speed services from the Maidstone West to St. Pancras. Rail journey times to London from some of the smaller rural towns (Staplehurst and Marden) are as low as 40 minutes. The Borough is well served by the motorway network with the M20 and M2 both providing links to the M25 and the Channel Ports. The international high speed railway stations at Ebbsfleet (15 mins) and Ashford (25 mins) are also extremely accessible.

### **What matters to Maidstone residents**

The Council carried out extensive consultation when developing the Sustainable Community Strategy for Maidstone 2009-2020. Residents were asked to identify what was good and bad about living in the Borough as well as their dream for Maidstone. The top three positive comments related to Maidstone included shopping, parks and the river. Other positive comments related to cleanliness, the countryside and nightlife. The top three negative comments related to traffic congestion, public transport and the quality of roads. The top three dreams for Maidstone residents related to resolving transport issues, improving the river and an improved theatre/concert facility.

A residents' survey was undertaken in 2011. This was the first survey the Council had undertaken since the Place Survey in 2008 and showed improved satisfaction in a number of areas including providing value for money, keeping residents informed and the way the Council runs its services. It also showed some areas that need improvement, such as people from different backgrounds getting on well together and satisfaction with the local area. The next residents' survey is programmed to take place in September 2015, when the opportunity to ask Maidstone's residents about their perceptions of crime and fear of crime and ASSB will be taken.

## Appendix 4

### Terrorism

Prevent is a part of the UK's counter terrorism strategy, CONTEST. Its aim is to stop people becoming terrorists or supporting terrorism. Prevent seeks to address all forms of terrorism but will continue to prioritise according to the threat they pose to our national security. Whilst Kent has not been identified as a national priority site, it is recognised that there is a need to address this issue here.

The current threat level to the UK from international terrorism is severe. The most significant international terrorism threat to the UK remains violent extremism associated with and influenced by Al Qa'ida, and more lately by ISIS/ISIL. 'Prevent' is about stopping people becoming terrorists or supporting violent extremists. There are five elements:

1. Challenging violent extremist ideology and supporting mainstream voices;
2. Disrupting those who promote violent extremism and supporting the institutions where they are active;
3. Supporting individuals who are being targeted and recruited to the cause of violent extremism;
4. Increasing the resilience of communities to violent extremism;
5. Addressing the grievances that ideologues are exploiting.

The current international terrorist threat is quite different from previous threats, with contemporary terrorist groups claiming a religious justification for their actions. They seek mass casualties and are both sophisticated and unconventional in their techniques: they do not provide warnings and seek out soft targets, in particular crowded places.

The threat is very real and will be around for a number of years, but despite the threat, the Police must be proportionate and measured in their response. The responsibility for preventing violent extremism and supporting those individuals and communities who may be vulnerable rests with us all, including partners and communities. Delivering an effective Prevent programme requires action by a range of agencies, front line workers and, in particular, neighbourhood policing teams who come into contact with communities and vulnerable individuals.

### The Prevent Strategy 2011 review

In 2011, the government launched a review of the Prevent strategy. This review was independently overseen by Lord Carlile of Berriew. The review found that the previous Prevent programme tended to confuse the delivery of government policy to promote integration with government policy to prevent terrorism. Thus, in trying to reach those at risk of radicalisation, funding sometimes reached those extremist organisations that Prevent should have been confronting. The [Prevent strategy](#) has been re-focused, and now contains three objectives:

1. respond to the ideological challenge of terrorism and the threat from those who promote it;
2. prevent people from being drawn into terrorism and ensure that they are given appropriate advice and support;
3. work with sectors and institutions where there are risks of radicalisation that need to be addressed.

## Appendix 5

### Glossary of terms

Although some terms may not be specifically discussed in this Assessment, the following table of abbreviations are in common usage in policing and community safety.

A&E	Accident & Emergency	MARAC	Multi-Agency Risk Assessment Conference
ASB	Anti-Social Behaviour	MSG	Most Similar Group (of local authorities)
BCU	Basic Command Unit	NDTMS	National Drug Treatment Monitoring System
BDw	Burglary Dwelling	NHS	National Health Service
BOTD	Burglary Other Than Dwelling	NHW	Neighbourhood Watch
CCCZ	Cold Calling Control Zone	NEET	(Children) Not in Education, Employment or Training
CCTV	Closed Circuit Television	NTE	Night Time Economy
CDam	Criminal Damage	PACT	Partners and Communities Together
CDAP	Community Domestic Abuse Programme	PCC	Police and Crime Commissioner
CJS	Criminal Justice System	PCSO	Police Community Safety Officer
CP	Community Payback	PDU	Problematic Drug User
CRI	Crime Reduction Initiative	PPO	Prolific Priority Offender
CSP	Community Safety Partnership	RJ	Restorative Justice
CSU	Community Safety Unit	RSL	Registered Social Landlord
DA	Domestic Abuse	RTC	Road Traffic Collision
DAVSS	Domestic Abuse Volunteer Support Services	SDVC	Specialist Domestic Violence Court
ETE	Education, Training and Employment	SMP	Safer Maidstone Partnership
FTE	First Time Entrant (to criminal justice system)	SVC	Serious Violent Crime
HIRL	Hate Crime Incident Reporting Line	TFMV	Theft from Motor Vehicle
IDVA	Independent Domestic Violence Adviser	THSG	Theft and Handling Stolen Goods
ISVA	Independent Sexual Abuse Advisor	TOMV	Theft of Motor Vehicle
JFMO	Joint Family Management Officer	TOPC	Theft of Pedal Cycle
KCC	Kent County Council	VAP	Violence against the Person
KCVS	Kent Crime and Victimisation Survey	YISP	Youth Inclusion and Support Panel
KDAAT	Kent Drug & Alcohol Action Team	YJB	Youth Justice Board
KFRS	Kent Fire and Rescue Service	YJS	Youth Justice System
KCA	Kent Council for Addiction	YOS	Youth Offending Service
KSI	Killed or Seriously Injured	YRO	Youth Rehabilitation Order

## Appendix 6

### SPC Charts Explained

Statistical Process Control (SPC) Charts are a tool used by Kent Police to help identify whether there has been any significant improvements or deteriorations in a particular crime type.

When a category is stable and in control, the data will appear within a set of predicted limits based on past knowledge and experience. Although there will be some natural variation around the average (*also known as common cause variation*) as long as the figures remain within the control limits there has been no significant changes to what was anticipated.

If the category was unstable and displayed uncontrolled variation (*also known as special cause variation*), the data would not follow a predicted pattern and would indicate that something had changed and action *might* be required.

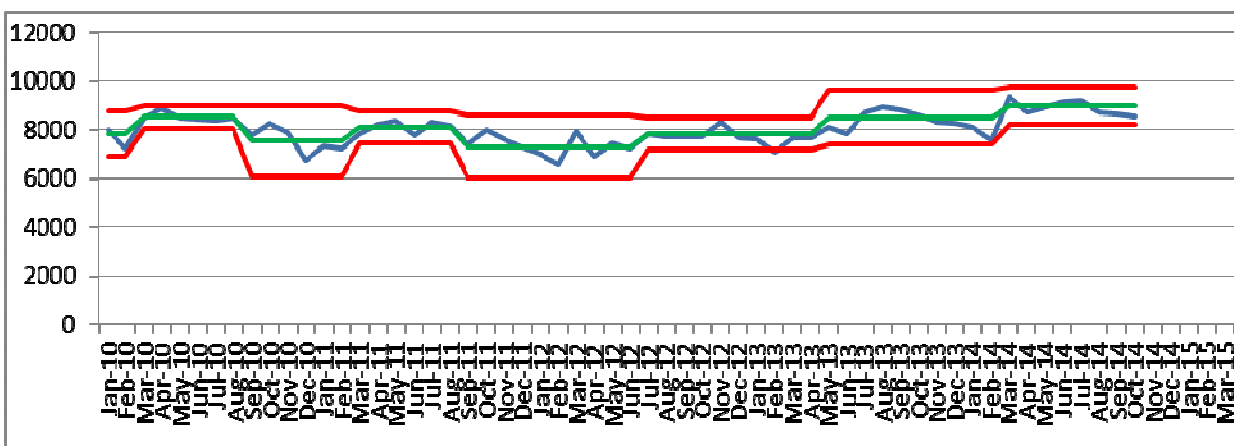
**Natural variation** indicates that any change from month-to-month is expected, e.g. the time you come to work every day varies by a few minutes around an average, however if there was an accident on the road then the time taken to come to work would be significantly longer, this would be **unnatural variation** indicating that something has gone awry.

SPC charts are generated based on historical data to produce the following:

- The **Centre Line (CL)** which is the average no. of recorded crimes / incidents
- The **Upper (UCL)** and **Lower Control Limits (LCL)** which are the limits of natural variation

Any result above the **UCL** suggests that there may be a problem. In addition, other indications that a category is out of statistical control includes when several results in a row are above the **CL** or when several results in a row showing an increase trend. If the figures are consistently below the **CL** this indicates an improvement and will result in the centre line and the control limits being lowered, often referred to as a 'step change'. Similarly if the figures for a specific category rise due possibly to an increase in activity; a revision to the data (i.e. back-record conversion); or possibly a change in what is recorded within each category then the CL and control limits may need to be raised. *NB. if the control limits are closer together this indicates a low level of variation around the average and shows that the category is in control, a wider gap between the limits indicates greater variation and less control.*

Example of a Kent Police SPC Chart:



# Agenda Item 9

## **MAIDSTONE PROTOCOLS FOR CRIME AND DISORDER REDUCTION PARTNERSHIP OVERVIEW AND SCRUTINY**

- 1.** These protocols assume:
  - The continued operation of the Police and Justice Act 2006;
  - The continued existence of a Crime and Disorder Committee within the Overview and Scrutiny Function at Maidstone Borough Council (currently the Community, Leisure Services and Environment Overview and Scrutiny Committee);
  - The existence of a Crime and Disorder Reduction Partnership for the Borough of Maidstone (currently the Safer Maidstone Partnership);
  - A partnership approach, working with responsible authorities within the Borough (and, where appropriate, beyond) as a “critical friend”.
  
- 2.** The purpose of this protocol is to ensure effective interaction between the Safer Maidstone Partnership and the Crime and Disorder Committee to:
  - Enhance the public accountability of the Safer Maidstone Partnership;
  - Establish acceptable and appropriate ways of working between the two bodies; and
  - Develop and maintain a positive working relationship for the benefit of the residents of the Borough of Maidstone.
  
- 3.** The protocols are based on the following principles:
  - Overview and Scrutiny of the Safer Maidstone Partnership should focus on supporting the reduction of crime and anti-social behaviour and reducing fear of crime and anti-social behaviour in the Borough of Maidstone.
  - Safer Maidstone Partnership Overview and Scrutiny should seek to minimise any unnecessary additional administrative burdens on responsible authorities.
  - Crime and Disorder Committee agendas need to be developed in conjunction with the Safer Maidstone Partnership.
  - It is the intention of the Crime and Disorder Committee to require the Safer Maidstone Partnership to demonstrate added value in the work it does.
  
- 4.** The Crime and Disorder Committee has the statutory power to:
  - Consider Councillor Calls for Action made in relation to community safety matters;
  - Review or scrutinise decisions made, or other action taken, in connection with the discharge by the responsible authorities of their crime and disorder functions; and
  - Make reports or recommendations to the local authority with respect to the discharge of those functions.
  - “The responsible authorities” means the bodies and persons who are responsible authorities within the meaning given by section 5 of

the Crime and Disorder Act 1998 (c.37) (authorities responsible for crime and disorder strategies) in relation to the local authority's area.

5. Maidstone Borough Council has a responsibility to work with Kent County Council and other district councils on the scrutiny of community safety issues where this is possible, for example through joint development of work programmes. The Overview and Scrutiny Team will seek to identify opportunities for joint working through the Kent and Medway Overview and Scrutiny Officer Network and present proposals to the Crime and Disorder Committee and the Safer Maidstone Partnership as these develop.

## **6. Communication**

- 6.1 The Crime and Disorder Committee and the Safer Maidstone Partnership will each nominate a named officer to be the main point of contact. That officer will direct all correspondence to the appropriate person.
- 6.2 The Overview and Scrutiny function will inform the Safer Maidstone Partnership of all Overview and Scrutiny Committee work programmes on a six monthly basis to give Partners the opportunity to comment on any items that they feel appropriate to their own work. The Safer Maidstone Partnership will also be invited to propose future work items for the Crime and Disorder Committee where it wishes to do so, though the Committee is under no obligation to take these on.
- 6.3 The Safer Maidstone Partnership will inform the Crime and Disorder Committee of its forthcoming work on a six monthly basis and consult the Committee on its work where appropriate. In particular, the Safer Maidstone Partnership should consult the Crime and Disorder Committee on its Partnership Plan.
- 6.4 Both parties will inform the other of structure changes and significant changes to priorities or future plans to ensure accuracy of information.

## **7. Information Sharing**

- 7.1 The Safer Maidstone Partnership will distribute public minutes of full Partnership, Policy group and Strategy group meetings to members of the Crime and Disorder Committee as soon as these are agreed.
- 7.2 The Crime and Disorder Committee may also request informal notes of delivery group meetings where this is relevant to work being carried out by the Committee.
- 7.3 The Safer Maidstone Partnership is required to respond to requests for information by the Crime and Disorder Committee "as soon as reasonably possible". These requests from councillors should be well focussed and thought through.

7.4 Information provided to the Crime and Disorder Committee by responsible authorities should be depersonalised and should not include any information that would be reasonably likely to prejudice legal proceedings or current or future operations of the responsible authority. These requirements cannot be bypassed by Schedule 12A of the Local Government Act 1972 i.e. by putting an item onto Part II of a committee agenda.

## **8. Meeting Protocols**

8.1 The Committee has a duty to meet at least once a year and is recommended to meet at 6 monthly intervals to ensure the ongoing building and maintenance of knowledge. Review task and finish groups may meet outside of these formal meetings with the requirement to report findings in full at a Crime and Disorder designated meeting.

8.2 Officers or employees of responsible authorities or of co-operating persons or bodies are required to attend meetings of the Crime and Disorder Committee to answer questions or provide information. The Committee will endeavour to give at least one month's notice to persons requested to attend. The person required must attend on the specified date unless they have a reasonable excuse not too.

8.3 Prior to meetings between the Crime and Disorder Committee and the Safer Maidstone Partnership, the Overview and Scrutiny function will:

- Agree meeting dates as far in advance as possible;
- Provide meeting paperwork at least 5 working days prior to the meeting;
- Provide the Safer Maidstone Partnership with a list of proposed questions or key areas of inquiry.

8.4 When representatives of the Safer Maidstone Partnership are invited to attend meetings of the Crime and Disorder Committee, the following protocols will apply:

- Committee Members should endeavour not to request detailed information from representatives of the Safer Maidstone partnership at meetings of the Committee, unless they have given prior notice through the appropriate officer. If, in the course of question and answer at a meeting of the Committee, it becomes apparent that further information would be useful, the representative being questioned may be required to submit it in writing to members of the Committee through the appropriate officer.
- In the course of questioning at meetings, representatives of the Safer Maidstone Partnership may decline to give information or respond to questions on the ground that it is more appropriate that the question be directed to a more senior representative.
- Representatives of the Safer Maidstone Partnership may decline to answer questions in an open session of the Committee on the grounds that the answer might disclose information which would be exempt or confidential as defined in the Access to Information Act



1985. In that event, the Committee may resolve to exclude the media and public in order that the question may be answered in private sessions.

- Committee members may not criticise or adversely comment on any individual representative of the Safer Maidstone Partnership by name.
- The Overview and Scrutiny Procedure Rules, as published in the Maidstone Borough Council Constitution, will apply to all meetings.

8.5 A record will be made of the main statements of witnesses appearing before the Committee and agreed with the witness prior to publication or use by the Committee. Committee meetings may be electronically recorded and web-cast.

## **9. Reporting and Recommendations**

9.1 Section 19(2) of the Police and Justice Act 2006 states that where the Crime and Disorder Committee makes a report or recommendations, a copy shall be provided to each of the responsible authorities.

9.2 In accordance with Section 19(8) of the Police and Justice Act, the authority, person or body to which a copy of the report or recommendations is passed shall:

- a) Consider the report or recommendations;
- b) Respond to the Crime and Disorder Committee indicating what (if any) action it proposes to take; and
- c) Have regard to the report or recommendations in exercising its functions.

9.3 The relevant partner (or partners, including the full Safer Maidstone Partnership) will have 28 days to formally respond to any recommendations made by the Committee, or if this is not possible as soon as reasonably possible thereafter. The relevant partner(s) will inform the Crime and Disorder Committee Chairman if delays are expected.

9.4 The Overview and Scrutiny function will ensure that drafts of Committee reports are made available for comment by the Safer Maidstone Partnership Strategy Group and any adverse comments or concerns reported to the Committee before the final report is published.

9.5 The Chairmen of the Safer Maidstone Partnership will be given advance notice of the date of publication of the report and consulted on the text of any accompanying press release.

## **10. Co-option**

10.1 The Crime and Disorder Committee may co-opt additional members as it sees appropriate. These co-optees:

- Have the same entitlement to vote as any other member;

- May not be co-opted where the committee is considering a decision or action for which that person was wholly or partly responsible, or otherwise directly involved;
- May not out-number the permanent committee members;
- Must be an employee or officer of a responsible authority or co-operating person or body; and
- Cannot be a member of the Executive.

The relevant responsible authority will be consulted as to the most suitable person prior to co-option, and the membership of the co-optee can be withdrawn at any time.

- 10.2 In addition to Co-option, the Crime and Disorder Committee will invite the Chief Inspector from Kent Police (Maidstone) to attend committee meetings when items on community safety are being considered.
- 11.** These protocols will be reviewed on an annual basis, at the first meeting of the Crime and Disorder Committee each Municipal Year by the Committee and the Safer Maidstone Partnership Chairman to ensure that they remain fit for purpose.