

# AGENDA



## COMMUNITIES, HOUSING AND ENVIRONMENT COMMITTEE ACTING AS THE CRIME AND DISORDER COMMITTEE MEETING

Date: Tuesday 14 February 2017

Time: 6.30 pm

Venue: Town Hall, High Street,  
Maidstone

Membership:

Councillors Barned, M Burton, Joy, D Mortimer  
(Vice-Chairman), Perry, Mrs Ring  
(Chairman), Mrs Robertson, Webb and  
Webster

- 
1. Apologies for Absence
  2. Notification of Substitute Members

**Continued Over/:**

---

**Issued on Monday 6 February 2017**

The reports included in Part I of this agenda can be made available in **alternative formats**. For further information about this service, or to arrange for special facilities to be provided at the meeting, **please contact Caroline Matthews on 01622 602743**. To find out more about the work of the Committee, please visit [www.maidstone.gov.uk](http://www.maidstone.gov.uk)

**Alison Broom, Chief Executive, Maidstone Borough Council,  
Maidstone House, King Street, Maidstone Kent ME15 6JQ**

3. Urgent Items
4. Notification of Visiting Members
5. Disclosures by Members and Officers
6. Disclosures of Lobbying
7. To consider whether any items should be taken in private because of the possible disclosure of exempt information.
8. Minutes of the Meeting Held on 15 March 2016 1 - 3
9. Presentation of Petitions (if any)
10. Questions and answer session for members of the public (if any)
11. Report of the Head of Housing and Community Services - 2017-18 Strategic Assessment 4 - 38

### **PUBLIC SPEAKING**

In order to book a slot to speak at this meeting of the Communities, Housing and Environment Committee, please contact Caroline Matthews on 01622 602743 or by email on [carolinematthews@maidstone.gov.uk](mailto:carolinematthews@maidstone.gov.uk) by 5 pm one clear working day before the meeting. If asking a question, you will need to provide the full text in writing. If making a statement, you will need to tell us which agenda item you wish to speak on. Please note that slots will be allocated on a first come, first served basis.

## **MAIDSTONE BOROUGH COUNCIL**

### **COMMUNITIES, HOUSING AND ENVIRONMENT COMMITTEE** **MEETING ACTING AS THE CRIME AND DISORDER COMMITTEE**

#### **MINUTES OF THE MEETING HELD ON TUESDAY 15 MARCH 2016**

**Present:** Councillor Mrs Ring (Chairman), and  
Councillors Mrs Blackmore, English, Mrs Joy, Newton,  
Perry, Webb and Webster

**Also Present:** Councillor Mrs Wilson

#### 126. APOLOGIES FOR ABSENCE

It was noted that apologies for absence had been received from Councillors D Mortimer, Mrs Parvin, Mrs Robertson and J A Wilson.

#### 127. NOTIFICATION OF SUBSTITUTE MEMBERS

It was noted that Councillor Mrs Blackmore was substituting for Councillor J A Wilson, Councillor Mrs Joy was substituting for Councillor D Mortimer, Councillor English was substituting for Councillor Mrs Robertson.

#### 128. URGENT ITEMS

There were no urgent items.

#### 129. NOTIFICATION OF VISITING MEMBERS

It was noted that Councillor Mrs Wilson was present as a Visiting Member for Agenda Item 11 – 2016-17 Strategic Assessment and 2013-18 Community Safety Partnership Plan Refresh.

#### 130. DISCLOSURES BY MEMBERS AND OFFICERS

During the discussion of the report of the Head of Housing and Community Services – 2016-17 Strategic Assessment and 2013-18 Community Safety Partnership Plan Refresh the Chief Executive declared an interest in an issue relating to the High Street Ward as she was a resident in that Ward.

#### 131. DISCLOSURES OF LOBBYING

There were no disclosures of lobbying.

#### 132. EXEMPT ITEMS

**RESOLVED:** That the items on the agenda be taken as proposed.

133. MINUTES OF THE MEETING HELD ON 17 NOVEMBER 2015

**RESOLVED:** That the minutes of the meeting held on 17 November 2015 be approved as a correct record and signed.

134. PRESENTATION OF PETITIONS (IF ANY)

There were no petitions.

135. QUESTIONS AND ANSWER SESSION FOR MEMBERS OF THE PUBLIC (IF ANY)

There were no questions from members of the public.

136. REPORT OF THE HEAD OF HOUSING AND COMMUNITY SERVICES - 2016-17 STRATEGIC ASSESSMENT & 2013-18 COMMUNITY SAFETY PARTNERSHIP PLAN REFRESH

The Chief Executive introduced the Strategic Assessment and Community Safety Partnership Plan Refresh report by explaining that the Strategic Assessment was carried out on an annual basis to look at the prevalent statistics for Crime and Disorder and to examine new and emerging issues.

In view of that Assessment the Committee noted that there was a need to slightly change the priorities from last year due to a number of emerging issues. One of which related to community resilience, which covered new duties that every Authority had been given as a result of the Prevent Agenda. These related to serious crime, including radicalisation and child sexual exploitation, legal highs, self neglect and hoarding and victim support and restoration justice.

In response to Members questions, it was noted that:-

- Slavery and trafficking would be added to the list of emerging themes
- That the High Street Ward be separated out in regards to the data to indicate Town Centre and the more general residential area
- Work on Anti-Social Behaviour continued to be a priority and is dealt with by the CSU and as a result of the processes put in place there had been a reduction in reported incidences over the past year
- Domestic Violence also remained a priority. Work carried out including having a collaborative approach and providing a one stop shop had helped to give heightened support to those in need
- In terms of the Prevent Agenda there has been a joined up and structured approach in Kent. MBC staff have been fully briefed by the Kent County Council Officer who is leading on this.

Terrorism is dealt with by Special Branch and Members were assured

that they deal with it in a sensitive manner.

- In terms of implementing 20 mph speed limits, Kent Police are supportive of this but felt that Highways England need to invest in the road infrastructure.

The Chief Inspector Mick Gardner gave an update to Members:

- The Police financial position had stabilised
- The PCSOs will remain and numbers are not expected to decrease
- Work on child abuse and sexual exploitation will continue to be high on the agenda. There had been successes on enforcement around houses of ill repute which can be linked to these issues
- Burglaries are down by 20% and theft of motor vehicles are also down
- There had been successes in bringing organised gangs to justice

It was proposed by Councillor Mrs Ring and seconded by Councillor English that in view of the issues raised by Members during discussions that recommendation 2 should be changed to "That the Communities, Housing and Environment Committee recommend to Council that the 2013-18 Community Safety Partnership document refresh is adopted and implemented by the Safer Maidstone Partnership subject to the addition of trafficking, slavery and narrative for High Street Ward".

VOTING: For: 7 Against: 0 Abstentions: 0

Motion Carried.

**RESOLVED:**

- (1) That the Communities, Housing and Environment Committee recommend to Council that the 2016-17 Strategic Assessment is adopted and implemented by the Safer Maidstone Partnership; and
- (2) That the Communities, Housing and Environment Committee recommend to Council that the 2013-18 Community Safety Partnership document refresh is adopted and implemented by the Safer Maidstone Partnership subject to the addition of trafficking, slavery and narrative for High Street Ward.

VOTING: For: 7 Against: 0 Abstentions: 0

137. **DURATION OF MEETING**

6.30 p.m. to 7.10 p.m.

# Agenda Item 11

## Communities, Housing & Environment

**February 14<sup>th</sup>  
2017**

Is the final decision on the recommendations in this report to be made at this meeting?

**No**

## 2017-18 Strategic Assessment

<b>Final Decision-Maker</b>	Council
<b>Lead Director or Head of Service</b>	John Littlemore, Head of Housing and Community Services
<b>Lead Officer and Report Author</b>	Nicolas Rathbone, Community Safety Partnerships Officer
<b>Classification</b>	Non-exempt
<b>Wards affected</b>	All wards

### **This report makes the following recommendations to the final decision-maker:**

1. That the Communities, Housing and Environment Committee recommend to Council that the 2017-18 Strategic Assessment is adopted and implemented by the Safer Maidstone Partnership.

### **This report relates to the following corporate priorities:**

- The Strategic Assessment will continue to create safer communities and deter and reduce crime & anti-social behaviour.
- It will contribute to the delivery of the Strategic Plan priorities; for Maidstone to be a decent place to live and Corporate and Customer Excellence.

### **Timetable**

<b>Meeting</b>	<b>Date</b>
Safer Maidstone Partnership	January 11 <sup>th</sup> 2017
Safer Maidstone Partnership Away Day	February 16 <sup>th</sup> 2017
Communities, Housing and Environment Committee	February 14 <sup>th</sup> 2017
Council	April 12 <sup>th</sup> 2017

# 2017-18 Strategic Assessment

## 1. PURPOSE OF REPORT AND EXECUTIVE SUMMARY

- 1.1 The purpose of the report is to update the Committee on the crime data over the past year, update on the Community Safety Partnership priorities and ask for the aforementioned document to be accepted for implementation.
- 

## 2. INTRODUCTION AND BACKGROUND

2.1 The Maidstone Community Safety Strategic Assessment is a report published by the council each year as required under the Crime and Disorder act 1998. The act requires Local Authorities in conjunction with key partners to produce a detailed crime and disorder audit. This identifies community safety issues, emerging trends and future priorities for the Community Safety Partnership (CSP).

2.2 The Maidstone Community Safety Plan 2013-18 is a five year rolling document, which highlights how the SMP plans to tackle local community safety issues that matter to the local community. The plan is revised annually through reviewing information set out in the Strategic Assessment which ensures that current issues can be taken into account and used to direct the SMP's strategy. An away day to discuss and complete the action plans for the priorities is taking place later in February 2017.

2.3 Last year's Strategic Assessment raised the following priorities:

- Violent Crime (specifically Domestic Abuse & Night Time Economy)
- Reducing Re-offending
- Road Safety (Killed or seriously injured)
- Substance Misuse
- Community Resilience (emerging issues around Child Sexual Exploitation, Prevent, Human Trafficking, Modern Slavery, Serious Organised Crime and Safeguarding)

Emerging themes that occurred through the year were:

- Serious Organised Crime (SOC) covering all vulnerabilities with a safeguarding risk, have seen an increase.
- Mental Health issues becoming more prevalent in all priorities.

2.4 Our priorities for this year have been extracted from a wide variety of information shared with our partners and represent the most important issues to focus on this (2016-17) year. Based on the information in the Strategic Assessment, it is recommended that the Committee confirm the following 2017-18 priorities:

- Gangs and Organised Crime Groups (including modern slavery)

- Child Sexual Exploitation (CSE)
  - Substance Misuse
  - Domestic Abuse and Other Violent Crime
  - Mental Health
- 

### **3. AVAILABLE OPTIONS**

- 3.1 Do nothing (not recommended). This is not a recommended option as the data sourced from the Kent Safer Communities portal shows that some community safety trends have changed. Other emerging issues need to be tackled within the partnership and if not picked up by the SMP, this will potentially result in more victims of crime, especially amongst the most vulnerable of society.
- 3.2 Support the identified priorities for 2017-18 so they can be implemented and developed by the SMP (recommended). These priorities have been clearly evidenced and some also raised by other Community Safety Partnerships around the county. This assists with cross borough interventions and valuable information sharing around similar issues.
- 

### **4. PREFERRED OPTION AND REASONS FOR RECOMMENDATIONS**

- 4.1 Move forward with the acceptance and implementation of the listed priorities. These will be delivered under the umbrella of the Safer Maidstone Partnership. The annual Strategic Assessment and subsequent refresh of the Partnership Plan demonstrate that issues do change and even emerge between assessments. Often this is as a result of partnership working targeting specific issues or crime types. It also shows that keeping up to date with current issues allows partners to be at the forefront of innovation and try to keep within one step of the perpetrators of crime.
- 

### **5. CONSULTATION RESULTS AND PREVIOUS COMMITTEE FEEDBACK**

- 5.1 The Strategic Assessment has been sent out to members of the SMP for consultation. These comments have been carefully considered and the reports updated accordingly in line with the desired direction of the majority of the partnership. The comments mainly related to specific wording within the documents and changes made to avoid confusion or misrepresentation of data. No further feedback was received in the two weeks following the SMP meeting.
- 

### **6. NEXT STEPS: COMMUNICATION AND IMPLEMENTATION OF THE DECISION**

- 6.1 Following final approval from Council and implementation of the decision, the Strategic Assessment will be disseminated to all partners for their information.

The Partnership Plan which will be completed following an SMP away day later in February and its actions will be fed through the priority subgroups. This year's Police & Crime Commissioner's community grant has to date not been announced. However, as and when this is done; it will then be advertised externally. Part of the criteria for bids is their alignment with the SMP and PCC's priorities and applications will normally need to be submitted, sifted and a report sent to the PCC's office for invoicing around May.

## 7. CROSS-CUTTING ISSUES AND IMPLICATIONS

Issue	Implications	Sign-off
<b>Impact on Corporate Priorities</b>	The Community Safety Partnership Plan will contribute to the delivery of the Strategic Plan priorities; for Maidstone to be a decent place to live and Corporate and Customer Excellence. In addition, the Community Safety Partnership Plan supports the delivery of Tackling Disadvantage and Building Stronger Communities.	Head of Housing and Community Services
<b>Risk Management</b>	None.	Head of Housing and Community Services
<b>Financial</b>	All Community Safety Grant funding is allocated directly to the Police and Crime Commissioner (PCC) who uses this money to target his identified priorities and support the ongoing delivery of the Crime Plans. Details for the 2017-18 funding have to date not been released. For the last two years the amount has been £37,104.  However, the plans and strategies detailed within the plan will cover a wide range of services provided by the Council and partner agencies with the majority of activity being either mainstream funded or funded via other grants or allocations not directly allocated to community safety.	Head of Finance and Resources
<b>Staffing</b>	The priorities within the Plan cross cut the agencies that make up the Safer Maidstone Partnership. Delivery against the priorities will be via mainstream activity and any grant funding that the borough is able to secure, including this year's Community Safety Grant allocation.	Head of HR Shared Service
<b>Legal</b>	Sections 5 to 7 of the Crime and Disorder Act 1998 (the 1998 Act), headed "Crime	Head of Legal Partnership

	<p>and Disorder Strategies”, require “responsible authorities” to comply with section 6 of the 1998 Act which states that “responsible authorities” shall formulate and implement;</p> <p>a) A strategy for the reduction of crime and disorder in the area; and</p> <p>b) A strategy for combating the misuse of drugs, alcohol and other substances in the area; and</p> <p>c) A strategy for the reduction of re-offending in the area.</p> <p>By virtue of section 5(1)(a) of the 1998 Act, the Council is the “responsible authority”. By completing an annual refresh of the Community Safety Plan based on the findings of a comprehensive Strategic Assessment, Maidstone is fulfilling its statutory requirement. There are reputational, environmental, economical and legal risks to the Council for not pro-actively pursuing an improvement in crime and disorder levels. The recommendations in this report recognise the importance of constructive dialogue with the partner organisations comprising the Community Safety Partnership and also the importance of coordinated and collaborative working.</p>	
<b>Equality Impact Needs Assessment</b>	The benefits of delivery against the plan will apply across the Maidstone borough, although by adopting an evidence based approach more benefit should be felt in areas where identified problems are greatest.	Policy & Information Manager
<b>Environmental/Sustainable Development</b>	None.	Head of Housing and Community Services
<b>Community Safety</b>	The Community Safety team is under the reporting line of the Community Partnerships and Resilience Manager. The focus is strongly on preventative work while continuing to be co-located and working closely in partnership with the police and other community safety related partners.	Head of Housing and Community Services
<b>Human Rights Act</b>	None.	Head of Housing and Community Services

<b>Procurement</b>	None.	Head of Finance and Resources
<b>Asset Management</b>	None.	Head of Housing and Community Services

## 8. REPORT APPENDICES

The following documents are to be published with this report and form part of the report:

- Appendix I: Strategic Assessment 2017-18
-



Strategic Assessment  
2017-18

## CONTENTS

	Page
<b>1. Executive Summary</b>	<b>4</b>
1.1 What is a Strategic Assessment?	4
1.2 Headline information aligned to key priorities 2016-2017	4
1.3 Safer Maidstone Partnership (SMP)	4
1.4 Priorities recommended to the SMP for 2017-2018	5
1.5 Methodology	5
1.6 Demographic and Economic Information	6
<b>2. Total Recorded Crime</b>	<b>7</b>
2.1 Total recorded Crime in Maidstone November 2015 - October 2016	7
2.2 Total recorded crime per 1,000 population in Kent – year ending March 2016	7
2.3 Volume of crimes by type within Maidstone for November 2015 – October 2016 and the same time period in 2014 - 2015	9
2.4 Police Statistical Process Control (SPC) Charts	10
<b>3. Violent Crime</b>	<b>11</b>
3.1 Total Violent Crime	11
3.2 Levels of Violence in the Borough Wards April 2016 – October 2016	13
3.3 Violent crime – Night-Time economy	13
3.4 Domestic Abuse	14
3.5 Adolescent to Parent Violence (APV)	16
<b>4. Anti-Social Behaviour</b>	<b>16</b>
4.1 Anti-Social Behaviour in Maidstone	16
<b>5. Substance Misuse</b>	<b>17</b>
5.1 Substance Misuse in Maidstone	17
5.2 NPS related hospital admissions	18
5.3 Alcohol related hospital admissions	18
5.4 Clients in treatment	19
5.5 Substance Misuse recommendations	19
<b>6. Reducing Re-Offending</b>	<b>19</b>
6.1 Availability of 'Proven adult reoffending' Data	19
6.2 Integrated Offender Management (IOM)	20
6.3 Reducing Re-Offending recommendations	21
<b>7. Road Safety</b>	<b>21</b>
7.1 Road Safety in Maidstone	21
7.2 Road Safety recommendations	21

<b>8. Community Resilience</b>	<b>22</b>
8.1 Community Resilience topics	22
8.2 Local Profiles	22
8.3 Community Resilience recommendations	22
<b>9. Subsidiary priority relating to Safeguarding (self-neglect &amp; hoarding)</b>	<b>23</b>
<b>10. Mental Health</b>	<b>23</b>
10.1 Mental Health recommendations	23
<b>11. Unlawful Encampments (UE's)</b>	<b>23</b>
<b>12. Recommendations to Safer Maidstone Partnership</b>	<b>24</b>
<b>13. How to get further information</b>	<b>24</b>
<b>APPENDICES</b>	
<b>Appendix 1 – Information Services</b>	<b>25</b>
<b>Appendix 2 – Case studies</b>	<b>26</b>
<b>Appendix 3 – Methodology notes</b>	<b>28</b>

## 1. Executive Summary

### 1.1 What is a Strategic Assessment?

Locally, our Community Safety Partnership (CSP) is known as the 'Safer Maidstone Partnership' (SMP). This assessment will look at the SMP's progress against the priorities set last year, and evaluate the effectiveness of the work undertaken. This document is reviewed annually and agreed by the SMP in March each year. It is also independently assessed by the Kent Community Safety Unit.

### 1.2 Headline information aligned to key priorities from 2016-2017:

- **ASB** – an **increase of 3%** in Maidstone in the past 12 months. Since 2010, recorded ASB incidents in the borough have fallen by 33%.
- **Substance Misuse** – offences **increase of 22.3%** in Maidstone.
- **Violent Crime (Domestic Abuse)** – an **increase of 34.8%**. One Stop Shop use is up 42%.
- **Violent Crime overall** – an **increase of 26.2%**.
- **Road Safety** (killed or serious injured) – a **decrease of 20.6%** (over three years 2013-2015) 2015 – 50, 2014 – 74, 2013 – 63.
- **Reduce Reoffending rate** – Due to the division of the Probation services into the National Probation Service (NPS) and the Kent, Surrey & Sussex Crime Rehabilitation Company (KSS CRC) data around re-offending will not be released by the Ministry of Justice (MOJ) until 2017. However Integrated Offender Management (IOM) data shows an overall **reduction of 45% in offending** for the West division cohort of prolific offenders.
- **Community Resilience** – multi-agency subgroup created to discuss all themes for this new priority. Serious Organised Crime (SOC) presentations from the police delivered to partners, desktop exercise to develop case working and information sharing. Local Profiles published to highlight areas of risk for victims under the police Control strategy topics in the borough.

It should be noted that part of the reason for increases in certain offences is partly because of changes in the recording of incidents. For example a victim of domestic abuse may report 6 further offences towards them but these will be individually crimed instead of being collated together.

Certain crimes have also been re classified into other thematic areas, also where a particular offence has been targeted for enforcement and individuals have been caught and charged; there will inevitably be a percentage increase in offences recorded.

The results of reclassifications and targeted enforcement will be known in future quarterly crime briefings and strategic assessments. The latest (2016) HMIC PEEL (police effectiveness, efficiency and legitimacy) assessment of Kent Police reported: The extent to which the force is efficient at keeping people safe and reducing crime is: **good**. The extent to which the force is legitimate at keeping people safe and reducing crime is: **outstanding**.

### 1.3 Safer Maidstone Partnership (SMP)

The SMP brings together people from local government, the NHS, the police, the fire service, probation, local businesses, housing providers and the voluntary and community sector to work as a team to tackle crime.

Priorities identified from the last strategic assessment (2016-17) were:

- **Violent Crime (specifically Domestic Abuse and Night Time Economy)**
- **Substance Misuse**
- **Reduce Reoffending**
- **Road Safety – Killed & Seriously Injured**

- **Community Resilience (emerging issues around CSE, Prevent, Human Trafficking, Modern Slavery, SOC and Safeguarding)**

Emerging themes that occurred through the year:

- **Serious Organised Crime (SOC) covering all vulnerabilities with a safeguarding risk, have seen an increase.**
- **Mental Health issues becoming more prevalent in all priorities.**

These priorities were closely aligned with the Kent Police and Crime Commissioner's crime plan and that of the Kent County Council community safety agreement to ensure a continuity of strategy locally. Consideration has also been given to the Kent Police Control strategy which has seen the emergence of the following themes: Their current 6 key priorities are:

- **Child abuse and exploitation**
- **Gangs**
- **Human trafficking and modern slavery**
- **Organised acquisitive crime**
- **Counter terrorism and domestic extremism**
- **Domestic abuse, serious violence and sexual offences**

#### **1.4 Priorities recommended to the Safer Maidstone Partnership for 2017 – 2018.**

Our priorities for this year have been extracted from a wide variety of information shared with our partners and represent the most important issues to focus on this (2017/18) year. Based on the information in this Strategic Assessment, it is recommended that the Safer Maidstone Partnership confirm the following **2017/18** priorities:

- 1. Gangs and Organised Crime Groups (including modern slavery);**
- 2. CSE;**
- 3. Substance Misuse;**
- 4. Domestic Abuse and other violent crime;**
- 5. Mental Health (including identification of vulnerabilities).**

These priorities have also been borne out by the scoring matrix used in 'MoRiLE' which ranked these priorities based on threat risk and harm to the public and organisations.

Prevent and Reducing Reoffending will now be cross cutting themes rather than named priorities along with ASB. All the priorities will require a robust multi-agency response, but because they are important for residents and communities, achieving them will have a positive impact on people's quality of life.

#### **1.5 Methodology**

Data for this year's Strategic Assessment has been sourced by the Kent Community Safety Unit from a variety of statutory partners including Police, Kent Fire and Rescue Service (KFRS), Health, Probation and KCC Services. They are available in the Partnership data sets section on the Kent Safer Communities portal. A number of different data display tools have been included in this year's assessment for the purpose of putting the context of crime data into more perspective, over a longer period of time.

The Kent Community Safety Unit has explored the use of the **MoRiLE** (Management of Risk in Law Enforcement) scoring matrix to look at ranking offences based on threat, risk and harm. Maidstone

Borough Council and others in Kent have incorporated this methodology within this year's Strategic Assessment. (Appendix 3).

Another variation to this year's methodology is a greater use of **Statistical Process Control** Charts (SPCs). These give a clearer visual perspective of crime figures over a specified timescale and allow for natural variations within the control limits. (Appendix 3)

Serious Organised Crime **Local Profiles** have now been published by Kent Police for each Local Authority area. They highlight the risk for each topic in the Police 'CONTROL' strategy and offer advice to partners around what to look out for. (Appendix 3).

It is important to note that most of the data relating to crime and disorder collated for this strategic assessment covers the period November 2015 – October 2016 unless otherwise stated. It should also be noted that changes to crime definitions in 2013 and changes to data collection practices has meant that comparisons before 2014 were not always possible. The data in this assessment will be used to identify trends in criminal activity in Maidstone and will be cross referenced with other districts in Kent and previous Maidstone data sets to highlight specific issues unique to Maidstone.

## 1.6 Demographic and Economic Information

### Population profile

The latest population figures from the 2015 Mid-year population estimates show that there are 164,500 people living in the Maidstone Borough. This population size makes Maidstone Borough the largest Kent local authority district area.

75% of the borough's population live in the Maidstone urban area with the remaining 25% living in the surrounding rural area and settlements.

In 2015 Maidstone Borough was ranked as the 9<sup>th</sup> most deprived district in Kent (out of 12 districts, with the most deprived being ranked 1). Nationally, Maidstone ranks 198<sup>th</sup> out of 326 local authority districts in England. This rank places it within England's least deprived half of authorities.

### Unemployment rates

Maidstone's claimant rate is currently 1.2%. This is lower than the county average of 1.6% and considerably less than the national average of 1.8%. The majority of those unemployed are aged 18-24, this age group accounts for 23.7% of all those unemployed Maidstone.

District	Total unemployed as at September 2016	Resident based rate %	Change since previous month		Change since last year	
			Number	%	Number	%
Maidstone	1,225	1.2%	-15	-1.2%	45	3.8%
Kent	14,775	1.6%	-65	-0.4%	1,825	14.1%
Great Britain	718,910	1.8%	-9,390	-1.3%	-7,900	-1.1%

Source: NOMIS - Claimant Count

## 2. Total Recorded Crime

### 2.1 Total recorded Crime in Maidstone November 2015 - October 2016

This section looks at total crime data and is followed by a more detailed analysis of the crime categories that have formed Maidstone's strategic assessment.

Countywide there were 300,528 emergency '999' calls received to the Kent Force Control Room from November 15 – October 16. This was an **increase of 10.3%** on the previous 12 months. '101' non-emergency calls stood at 583,549, an **increase of 3.1%** on the previous 12 months. The average percentage of 999 calls answered was down 0.5% at 98.9%. Answered 101 calls were down from 88.8% to 82.4% in the same period.

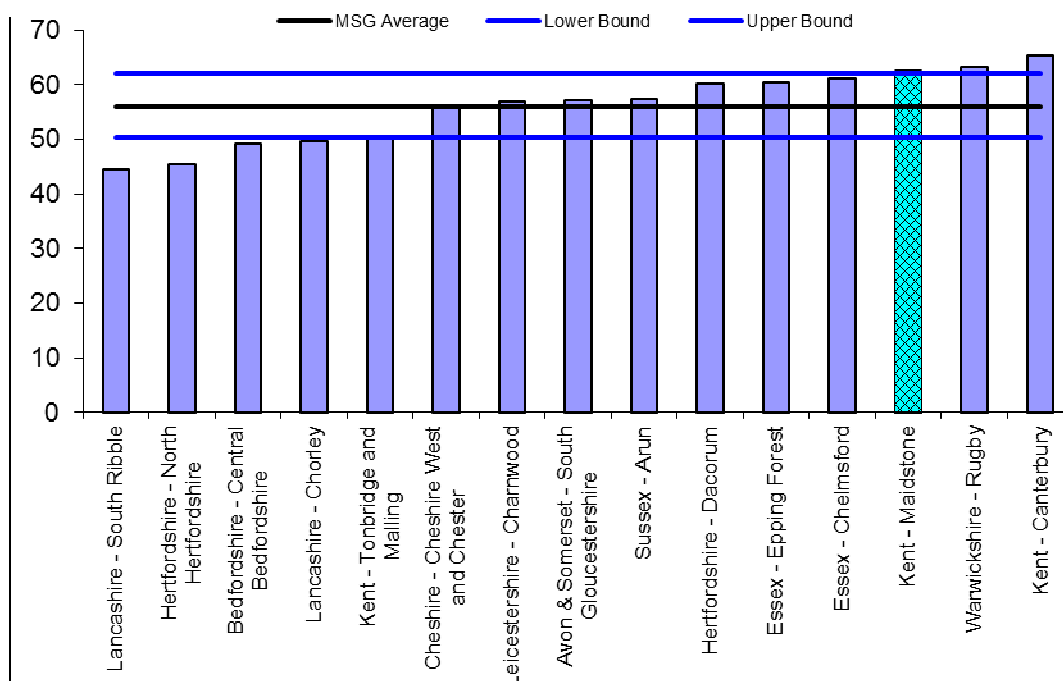
All crime in the borough **rose by 11.8%** in the period November 2015 to October 2016 compared with the same period the previous year, from a total of 9,189 crimes to 10,271 crimes. Using financial year data (April 15 to March 16), recorded crimes equated to 58 offences per 1,000 population in Maidstone. When compared to the county, Maidstone has a below average number of offences per 1,000 of the population and is ranked equal 5th out of all of the districts in Kent.

### 2.2 Total recorded crime per 1,000 population in Kent – year ending March 2016

Area	Number of offences	2016 rate per 1,000 pop.	2015 rate per 1,000 pop.	2014 rate per 1,000 pop.	County Ranking
Tunbridge Wells	5140	44	43.4	43.2	1
Tonbridge & Malling	5961	48	45.3	45.7	2
Sevenoaks	5894	50	47.5	48.2	3
Ashford	6551	53	51.6	57.5	4
Maidstone	9332	58	56.7	59	5=
Dover	6581	58	57.8	59.1	5=
Canterbury	9557	61	57.1	58.7	7=
Shepway	6671	61	56.6	59.6	7=
Swale	10059	71	67.7	73.9	9
Dartford & Gravesham	15650	75	68.8	74.2	10
Thanet	11980	87	82	91	11
KCC Total	89643	59	59.4	62.7	
Medway	20285	74	70.3	67	
Kent	113651	64	61	63.4	

The Most Similar Group (MSG) chart below shows crimes per 1,000 residents for Maidstone compared to 14 other 'similar groups'. MSG's are grouped using over 20 different demographic parameters. You will notice that Tonbridge & Malling and Canterbury CSP's are both in this group. When comparing other CSP's crime data within Kent, these two CSP's are therefore the best to compare with Maidstone.

**iQuanta Bar Chart MSG (12 months) - Crimes per 1000 Residents**  
**Kent - Maidstone**  
**Crimes**  
**01 Nov 2015 - 31 Oct 2016**



**OFFICIAL SENSITIVE - Provisional data before it is finalised and published by the Office for National Statistics**

CSP	Crimes / 1000 Pop
Lancashire - South Ribble	44.459
Hertfordshire - North Hertfordshire	45.559
Bedfordshire - Central Bedfordshire	49.226
Lancashire - Chorley	49.775
Kent - Tonbridge and Malling	50.281
Cheshire - Cheshire West and Chester	55.679
Leicestershire - Charnwood	57.034
Avon & Somerset - South Gloucestershire	57.136
Sussex - Arun	57.291
Hertfordshire - Dacorum	60.106
Essex - Epping Forest	60.512
Essex - Chelmsford	61.163
<b>Kent - Maidstone</b>	<b>62.450</b>
Warwickshire - Rugby	63.252
Kent - Canterbury	65.339
<b>MSG Average</b>	<b>55.951</b>

### 2.3 Volume of crimes by type within Maidstone for November 2015 – October 2016 and the same time period in 2014-2015

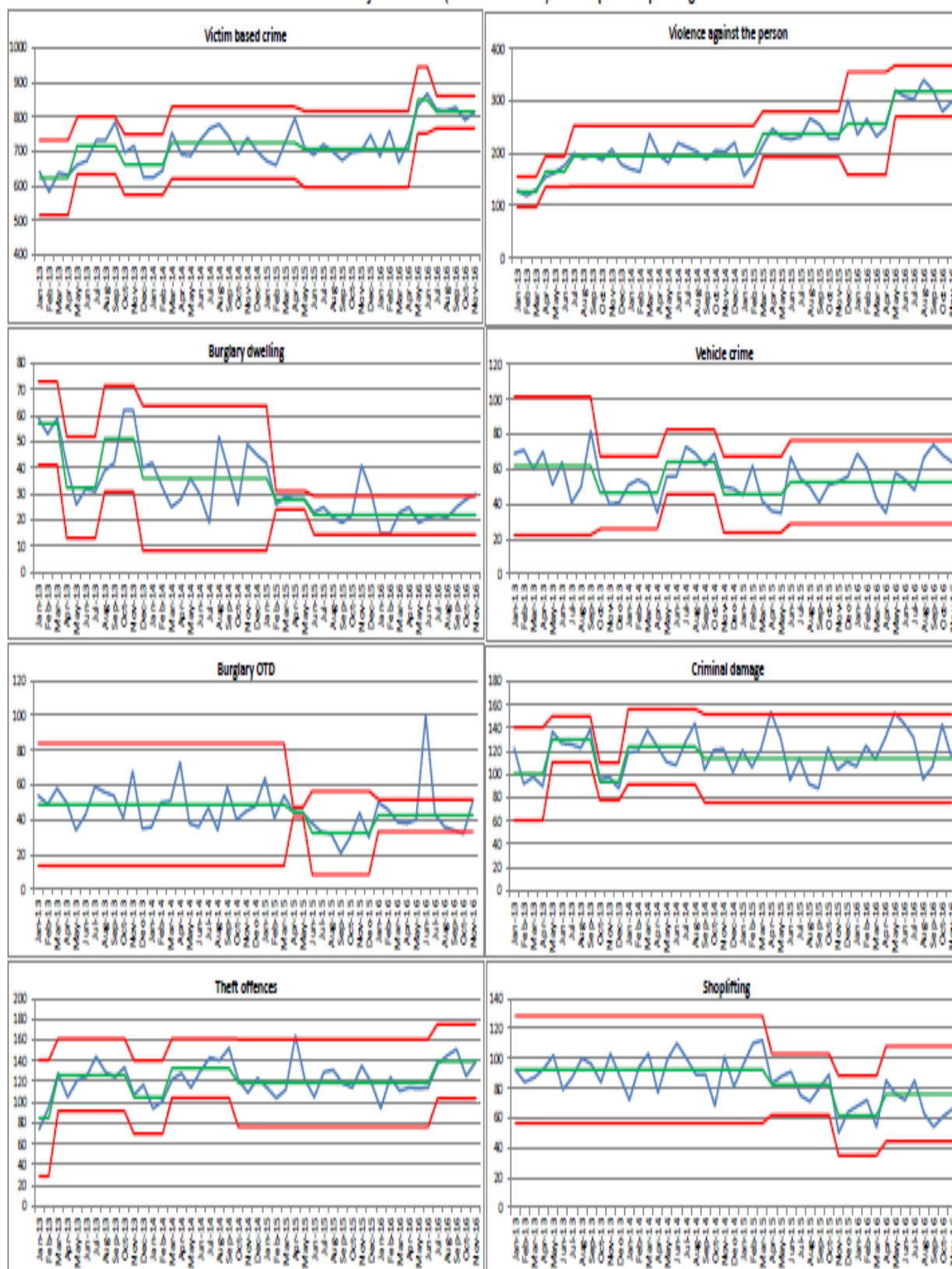
The table below identifies the different categories of crime reported in Maidstone and highlights the main areas where crime has increased/decreased.

	Month	Rolling year			% change
	October 2016	RY ending October 2016	RY ending October 2015	Number change	
<b>Victim based crime</b>	<b>791</b>	<b>9245</b>	<b>8488</b>	<b>+ 757</b>	<b>+8.9%</b>
Violent Crime	312	3743	2964	+ 779	+26.3%
- Violence Against The Person	280	3390	2665	+ 725	+27.2%
- Sexual Offences	26	284	222	+ 62	+27.9%
- Robbery	6	69	79	-10	-12.6%
Burglary Dwelling	28	286	357	-71	-19.9%
Burglary Other than Dwelling	32	532	495	+ 37	+7.5%
Vehicle Crime	68	686	583	+ 103	+17.6%
- Theft Of Motor Vehicle	20	182	132	+ 50	+37.9%
- Theft From Motor Vehicle	48	504	451	+ 53	+11.7%
Vehicle Interference	9	110	82	+ 28	+34.1%
Theft and Handling	199	2422	2633	-211	-8.0%
- Shoplifting	61	804	1077	-273	-25.3%
- Theft of Pedal cycle	13	136	111	+ 25	+22.5%
- Other Theft	125	1482	1445	+ 37	+2.6%
Criminal Damage	143	1466	1372	+ 94	+6.8%
<b>Crimes against society</b>	<b>69</b>	<b>1026</b>	<b>701</b>	<b>+ 325</b>	<b>+46.4%</b>
Drug Offences	24	345	282	+ 63	+22.3%
Possession of weapons	4	50	45	+ 5	+11.1%
Public order offences	23	402	227	+ 175	+77.1%
Other crimes	18	229	147	+ 82	+55.8%
<b>All crime</b>	<b>860</b>	<b>10271</b>	<b>9189</b>	<b>+ 1082</b>	<b>+11.8%</b>

The data clearly illustrates an increase in crimes against society, violent crime and vehicle crime; (violent crime +26.3%, public order +77.1%, drug offences +22.3% & TOMV +37.9%); there has however been a decrease in robbery -12.6%, shoplifting -25.3% and burglary dwelling -19.9%. Violent crime increases could partly be due to new police recording measures. Some crimes against society figures have increased because of different classification of crimes and will be reflected better in subsequent quarterly crime figure briefings.

## 2.4 Police Statistical Process Control (SPC) Charts

Maidstone - Monthly SPC charts (Jan-13 to Nov-16) - 5 data point step change:



The above Police Statistical Process Control (SPC) Charts for Kent cover the period June 13 – November 16.

They show the trends in crime figures of 8 offences:

- Victim Based Crime
- Violence Against The Person (VATP)
- Burglary Dwelling
- Burglary Other Than Dwelling (BOTD)
- Vehicle Crime
- Criminal Damage
- Theft
- Shoplifting

The methodology for the charts is attached but put simply; SPC charts are generated based on historical data to produce the following:

- The Centre Line (CL) which is the average no. of recorded crimes / incidents
- The Upper (UCL) and Lower Control Limits (LCL) which are the limits of natural variation

Any result above the UCL suggests that there may be a problem. In addition, other indications that a category is out of statistical control includes when several results in a row are above the CL or when several results in a row show an increasing trend.

If the figures are consistently below the CL this indicates an improvement and will result in the centre line and the control limits being lowered, often referred to as a 'step change'.

This shows over a three and a half year period, a better visual picture of how crime figures for different offences have fluctuated. Rather than relying just on a table showing a percentage change from the previous year, it allows for naturally occurring rise and falls in offences year on year.

It can be seen that victim based crime and VATP have seen a steady increase in the period, and burglary dwelling, BOTD and Shoplifting have shown decreases. The remaining 3 crime types have held steady over the period.

### 3. Violent Crime

#### 3.1 Total Violent Crime

'Violent Crime' covers a wide range of offences including murder, manslaughter, GBH, ABH and other assaults without injury, threats to kill, harassment, sexual offences and robbery. Maidstone has seen an **increase of 26.3%** in violent crime compared with the period of November 2014 – October 2015. It's important to mention that this may be attributed to a change in police recording. This increase is below the division and county percentage and the 4<sup>th</sup> lowest increase out of 13 areas.

Violent Crime	Month	Rolling year			% change
		RY ending October 2016	RY ending October 2015	Number change	
Dartford	267	2956	2220	+ 736	+33.2%
Gravesham	308	3116	2284	+ 832	+36.4%
Medway	703	8252	6397	+ 1855	+29.0%
Swale	275	3701	2827	+ 874	+30.9%
<b>North Division</b>	<b>1553</b>	<b>18025</b>	<b>13728</b>	<b>+ 4297</b>	<b>+31.3%</b>

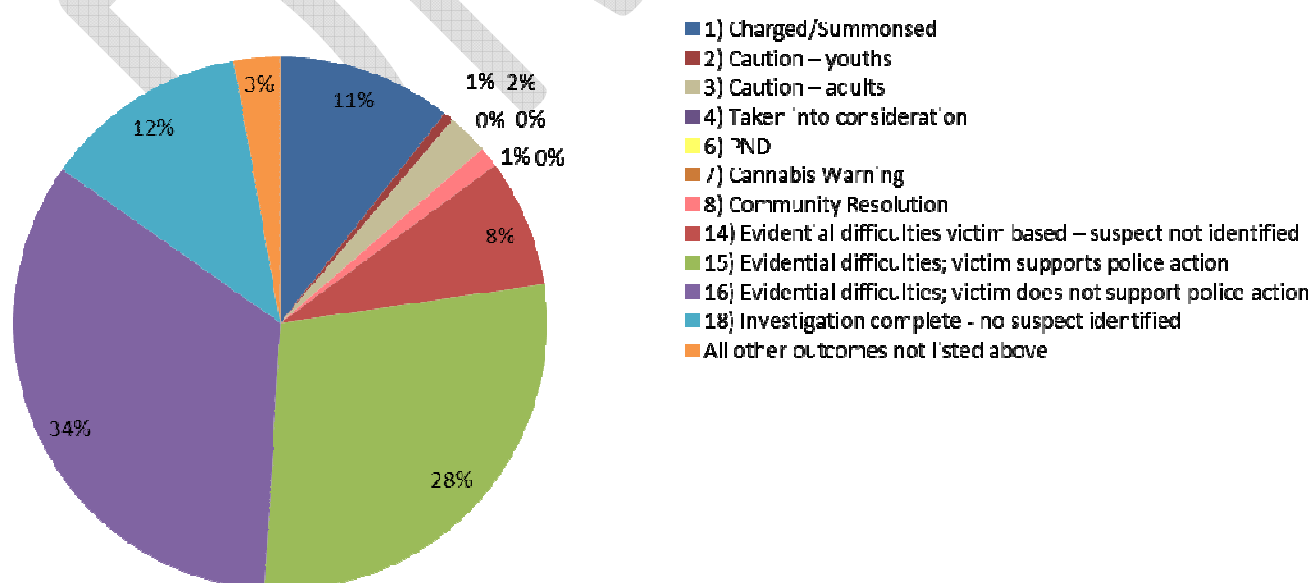
Maidstone	312	3743	2964	+ 779	+26.3%
Sevenoaks	158	1702	1301	+ 401	+30.8%
Tonbridge and Malling	180	2117	1623	+ 494	+30.4%
Tunbridge Wells	184	1962	1625	+ 337	+20.7%
<b>West Division</b>	<b>834</b>	<b>9524</b>	<b>7513</b>	<b>+ 2011</b>	<b>+26.8%</b>
Ashford	214	2378	1902	+ 476	+25.0%
Canterbury	361	3874	2938	+ 936	+31.9%
Dover	296	2799	2338	+ 461	+19.7%
Shepway	286	2960	2283	+ 677	+29.6%
Thanet	431	5262	4008	+ 1254	+31.3%
<b>East Division</b>	<b>1588</b>	<b>17273</b>	<b>13469</b>	<b>+ 3804</b>	<b>+28.2%</b>
<b>Force</b>	<b>3976</b>	<b>44823</b>	<b>34712</b>	<b>+ 10111</b>	<b>+29.1%</b>

### Violent Crime November 2015 - October 2016

The majority of violent crime offences occurring in Maidstone within the 12 months ending 31st October came under the 'Violence against the person' (VATP) category. This category covers offences ranging in severity from assault without injury to murder, however does not include robberies or sexual offences.

There were 3390 VATP offences in Maidstone spanning the same period of time. This is up from 2665 in 2014-15, an **increase of 27%**. It should be noted that many VATP offences will be minor assaults and on further investigation some of these will be found to be accidental contact with no malicious intent, rather than situations where force has been used intentionally.

This is demonstrated by the low number of charges in October 2016 where only 11% of perpetrators were charged or summonsed as a result of a VATP offence. 35% of VATP offences resulted where the victim did not support police action. 13% had no identified suspect.

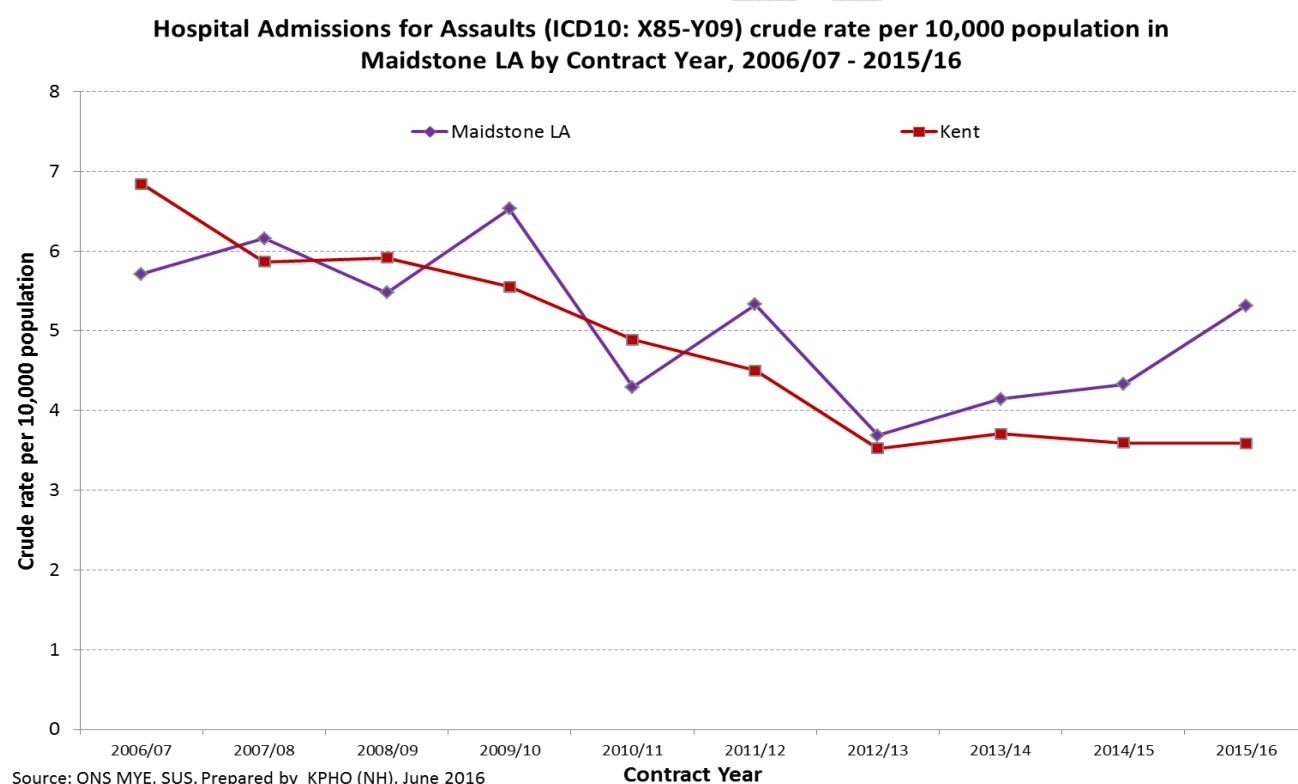


### 3.2 Levels of Violence in the Borough Wards April 2016 – October 2016

High street ward had the highest number of recorded violent crimes in the borough with 607 incidents reported (up from 452 on same period in 2015) alongside Fant with 178 (up from 108), Shepway North 171 (up from 95) and Parkwood 164 (up from 100). The Wards with the lowest levels of violent crime were Downswood & Otham with 10 incidents, Boughton Monchelsea & Chart Sutton 14, Barming 16 and Leeds 17.

It should be noted that for this assessment there is no differential for offences in the High Street ward, to say if they were related to residential addresses or as is most probable for the majority, to businesses, shopping areas and the night time economy in general. At this time it is not possible for future assessments to separate this data so as not to portray such a skewed view of the ward.

The table below illustrates hospital admissions for assaults covering 9 years. Kent has seen a steady decline overall which Maidstone has generally followed. Recently however, county figures have plateaued and Maidstone has seen a slight increase.



### 3.3 Violent Crime - Night Time Economy

Maidstone has a highly active night time economy (NTE) which generates around £60 million each year; this is considered to be a key contributing factor to the heightened levels of violence in the High street ward. Bearing in mind the size of the County town's NTE though, it is still considered by agencies and the public as a relatively safe place to visit compared to similar large towns/cities. This was enforced by an overall sense of feeling safe in the town via a public consultation into the town centre and NTE.

**Violent crime has however seen a year on year increase in Maidstone and it is clear that greater focus needs to be provided to ensure violence is reduced. Current work undertaken to reduce the levels of violent crime in Maidstone is reported in the CSP rolling plan and Violent Crime will remain as a priority.**

### 3.4 Domestic Abuse

The cross-government definition of domestic violence and abuse is:

any incident or pattern of incidents of controlling, coercive, threatening behaviour, violence or abuse between those aged 16 or over who are, or have been, intimate partners or family members regardless of gender or sexuality. The abuse can encompass, but is not limited to:

- *psychological*
- *physical*
- *sexual*
- *financial*
- *emotional*

Domestic Abuse (DA) has and continues to account for a considerable proportion of violent crime; in Maidstone DA attributes to 39% of all violent crime, as well as being a fundamental feature of other offences such as criminal damage. Its prioritisation is not just in response to the serious nature of the behaviour involved but is also necessitated by the volume of incidents that are being recorded – made all the more significant as this is one crime category that has historically suffered from considerable under-reporting.

Domestic abuse sits as both a local, county and national priority which is supported through local mechanisms such as the Multi-Agency Risk Assessment Conference (MARAC) which provides support and protection to families and individuals in high risk domestic abuse situations. There is also the commissioning of the Independent Domestic Violence Advisor service (IDVA) which provides support and guidance to victims of DA. Each district also delivers a 'one-stop shop' where all victims of domestic abuse can receive advice and support.

#### Recorded Incidents of Domestic Abuse and Repeat Victims

Between the periods September 2015 - August 2016, Maidstone had recorded 2683 incidents of Domestic abuse (26.4% average repeat victims) compared to 2258 incidents (26.2% repeat victims) in the same period in the previous year. This translates to a **34% increase** in cases, though percentages of repeat victim figures are virtually unchanged.

Whilst our incidences are lower than the average in the county our rate for repeat victims is the second highest in Kent with a **26% rate of repeat victimisation**. Domestic abuse is a complex crime which puts great pressure on victims to return to their relationships on the basis of fear, low self-esteem, family ties and a hope for change.

It is widely recognised that increased recorded incidents of domestic abuse are not necessary indicators of a worsening situation. Since domestic abuse has been an under-reported crime, increased reports indicate that DA victims feel more confident to come forward to report the abuse they are suffering. Many of our partners on the domestic abuse forum champion domestic abuse in their respective services encouraging clients and service users to be open about their circumstances and feel confident in the services that can support them to move out of domestically abusive relationships.

#### One-Stop Shops

Domestic Abuse One Stop Shops offer free advice, information and support from a range of agencies under one roof to help victims of domestic abuse. Maidstone's one stop shop is currently hosted at the Salvation Army and provides advice on housing, legal matters, policing and specialist DA advice. Information regarding the take-up of One-Stop Shop services has been provided by the Kent and Medway Domestic Abuse Strategy Group for the 12 month period July 2015 - June 2016, and the previous 12 month periods.

## Number of Visitors

Between July 2015 and June 2016 **3,173** people were assisted at the domestic abuse one stop shops, an increase of **31.7%** compared to the previous year.

Table 1:

Location	No of visitors 2010/11	No of visitors 2011/12	No of visitors 2012/13	No of visitors 2013/14	No of visitors 2014/15	No of visitors 2015/16	% increase/decrease in visitors (compared to previous year)	Visitors per 10,000 LA population (based on KCC 2016 projection data)
Ashford	75	169	239	316	317	<b>362</b>	<b>14.2</b>	<b>28.2</b>
Canterbury	169	262	214	232	253	<b>328</b>	<b>29.6</b>	<b>31.1<sup>6</sup></b>
Dartford	60	46	52	74	116	<b>138</b>	<b>19.0</b>	<b>13.0</b>
Dover	102	54	83	81	86	<b>188</b>	<b>118.6</b>	<b>16.4</b>
Gravesend	52	31	52	64	134	<b>135</b>	<b>0.7</b>	<b>12.7</b>
Herne Bay <sup>1</sup>	n/a	n/a	43	125	147	<b>163</b>	<b>10.9</b>	<b>31.1<sup>6</sup></b>
Maidstone	n/a	20	65	97	156	<b>222</b>	<b>42.3</b>	<b>13.4</b>
Medway	128	146	147	287	508	<b>638</b>	<b>25.6</b>	<b>22.9</b>
Shepway	143	120	91	165	183	<b>260</b>	<b>42.1</b>	<b>23.5</b>
Sheerness <sup>2</sup>	n/a	n/a	n/a	n/a	14	<b>167</b>	<b>n/a</b>	<b>26.2<sup>7</sup></b>
Sittingbourne	107	123	140	146	200	<b>208</b>	<b>4.0</b>	<b>26.2<sup>7</sup></b>
Sevenoaks <sup>3</sup>	6	12	16	25	16	<b>13</b>	<b>-18.8</b>	<b>1.1</b>
Thanet	49	71	117	215	223	<b>281</b>	<b>26.0</b>	<b>20.0</b>
Tonbridge <sup>4</sup>	n/a	n/a	n/a	8	55	<b>70</b>	<b>27.3</b>	<b>5.5</b>
Tunbridge Wells <sup>5</sup>	n/a	n/a	n/a	n/a	2	n/a	<b>n/a</b>	<b>n/a</b>
<b>Total</b>	<b>891</b>	<b>1054</b>	<b>1259</b>	<b>1835</b>	<b>2410</b>	<b>3173</b>	<b>31.7</b>	<b>17.5</b>

<sup>1</sup> Opened in November 2012.

<sup>2</sup> Converted from a drop in service in May 2015.

<sup>3</sup> Swanley opened twice a month until January 2013; weekly service thereafter. Moved to Sevenoaks in November 2014. Closed in April 2016.

<sup>4</sup> Opened in April 2014.

<sup>5</sup> Opened in November 2014, closed in April 2015.

<sup>6</sup> Canterbury and Herne Bay total visitors are combined as within the same LA area.

<sup>7</sup> Sheerness and Sittingbourne total visitors are combined as within the same LA area.

Maidstone has seen a **42.3% increase in attendance** at the one stop shop since last year which is the 2nd highest increase in the county. 93% of all visitors were from Maidstone with the remaining 7% coming from other districts, 11.7% of all visitors made a repeat visit compared with the previous year where 22% of attendees made a repeat visit.

80% of visitors described themselves as white British, 7.2% identified as white European and were the largest other single group.

According to the analysis undertaken by the Kent & Medway Domestic Abuse strategy group, 74% of all visitors were made aware of the service through local agencies, with 14% hearing about the service through family and friends.

When visitors were asked who it is they would have liked to talk to that were not present at that time, the agencies that were mentioned the most for Maidstone were Solicitors, Housing & Mental health.

With a 42.3% increase in visitor numbers over the year it is clear that more people are continuing to seek domestic abuse advice and access to services via the one stop shop; therefore it is crucial to ensure that we can meet demand and provide the services they need to keep themselves and their families safe.

## Multi-Agency Risk Assessment Conference (MARACs)

MARACs are meetings where information about high-risk domestic abuse victims (those at risk of murder or serious harm) is shared between local agencies. By bringing all agencies together at a MARAC, a risk-focused, co-ordinated safety plan can be drawn together to support the victim. MARACs now cover all persons aged 16 years and over.

Maidstone has had 179 MARAC cases between the periods of November 2015 - October 2016. This compares to 147 cases the previous 12 months, an increase locally of 22% and countywide 6.5%. 35 of those cases were repeat cases, this equates to 20% of all cases which is virtually unchanged from last year. This is the lowest repeat cases figure in the county whose average is 31.5%. Last year the county repeat case figure was 26.4%.

### 3.5 Adolescent to Parent Violence (APV)

APV is a form of domestic abuse inflicted by a child onto their parent. APV is usually perpetrated by a male child who victimises the mother.

APV is widely recognised by practitioners who work with families across a range of support services. However, it is only very recently that policy has begun to be developed to specifically address the problem. As a result, it is not usually officially documented and therefore does not currently appear in any public records or figures. Evidence of the extent of the problem is therefore piecemeal and developing incrementally.

Reports through the local early help teams, social services and troubled families have all identified APV to be an issue in Maidstone.

Whilst there is no current evidence to suggest perpetrators of APV grow into adult offenders it is highly likely that the learnt behaviour is carried on into adult relationships. It is recommended that APV is integrated into the SMP's DA priorities as a way of reducing future and current unreported offending.

### Violent Crime - domestic abuse

The Safer Maidstone Partnership has put considerable effort into raising the awareness of domestic abuse in the borough and has provided expert knowledge to local agencies. The SMP has also put in practical measures at the home of victims to keep them safe from their abuser. A number of initiatives have been supported this year and are outlined in the CSP plan. Due to the high levels of domestic abuse and repeat incidents, recommendation is made that Violent Crime (domestic abuse) remains as a priority for the partnership.

## 4. Anti-Social behaviour

### 4.1 Anti-Social Behaviour in Maidstone

Section 17 of the Crime and Disorder Act 1998, requires responsible authorities to consider crime and disorder (including antisocial behaviour and other behaviour adversely affecting the local environment). ASB was removed as a priority in name last year as it was seen as 'business as usual' with strong partnership working and information sharing continuing to resolve issues.

Figures have shown this year that there has been a slight **increase of ASB of 3%** in Maidstone from November 2015 – October 2016 with 3697 cases compared to 3588 in the previous year. District wide saw an increase of 0.5% in cases over the same period. Since 2010, recorded ASB incidents in the borough have fallen though by **33.1%**.

	November 15 – October 16	November 14 – October 15	Number difference	% difference	County ranking
Canterbury	3852	4231	-379	-8.9%	1
Dover	3380	3701	-321	-8.7%	2
Tonbridge& Malling	2326	2469	-143	-5.8%	3
Medway	8747	8983	-236	-2.6%	4
Swale	3904	3991	-87	-2.2%	5
Gravesham	3274	3337	-63	-1.9%	6
Thanet	5368	5337	+31	+0.6%	7
Shepway	2948	2890	+58	+2.0%	8
Sevenoaks	2012	1970	+42	+2.1%	9
Maidstone	3697	3588	+109	+3.0%	10
Tunbridge Wells	2287	2200	+87	+3.9%	11
Dartford	2990	2620	+370	+14.1%	12
Ashford	1856	1582	+274	+17.3%	13
Kent district	46641	46897	-256	-0.5%	

Reports of ASB direct to the MBC CSU for the 12 months from December 15 - November 16 amounted to 113 cases. The majority of these were neither investigated fully or the direct responsibility of MBC CSU staff. They were however appropriately signposted to other departments and organisations, sharing necessary information and keeping an audit trail of data.

Despite the slight rise, this supports our decision to remove ASB as a priority in name last year which allowed us to explore more emerging issues. The weekly CSU partnership meeting has recently evolved into a vulnerabilities group focusing on repeat locations as well as individuals. It was found that many of those on the case list had a degree of mental health issue which would benefit from wider partnership involvement.

The wards most affected by ASB in order of number of offences recorded are High street ward (although no differential between residential reports and public), Fant, East, Parkwood and Shepway South.

In 2016 there were no applications for the Community Trigger in the Maidstone borough.

## 5. Substance Misuse

### 5.1 Substance Misuse in Maidstone

Substance misuse relates to the use of drugs, alcohol and includes New Psychoactive Substances (NPS) previously known as 'legal highs'. Neither alcohol nor NPS were included in the recorded drug offences as they were both legal. Since the Psychoactive Substances Act 2016 became law in May 2016, NPS supply would be included in drug offence figures but not possession. It is however important to mention alcohol and NPS as there is a clear connection between criminal activity and the excessive use of these substances.

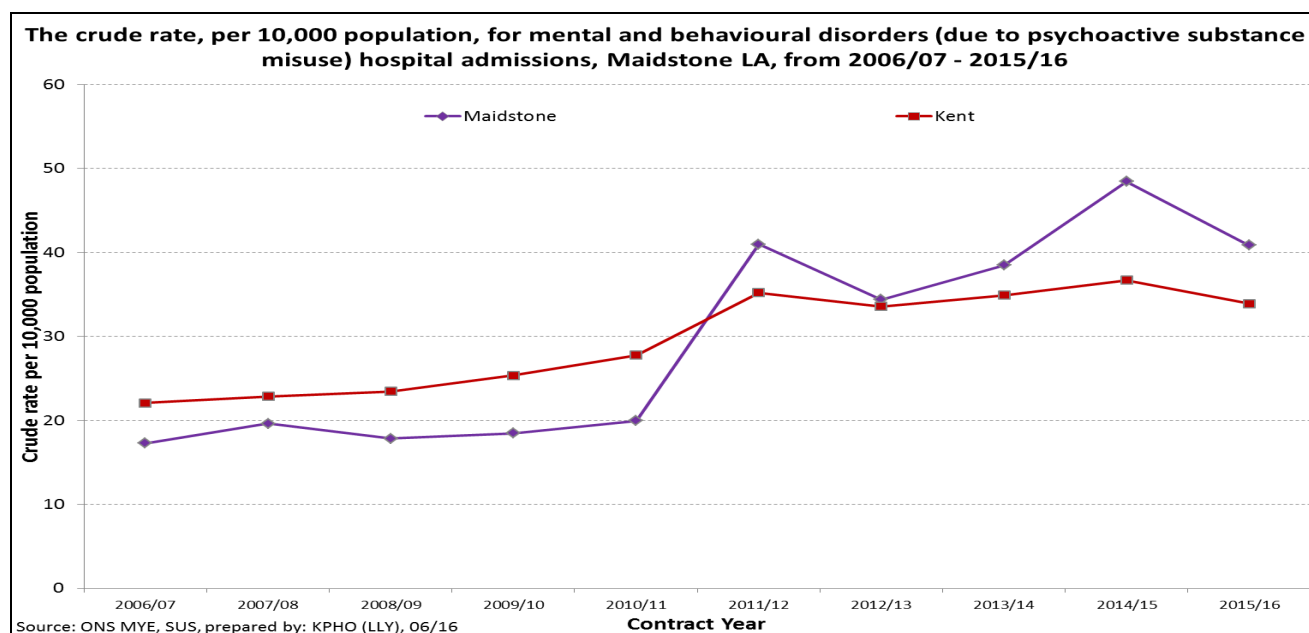
Kent police recorded drug offences includes both offences of drug supply and possession. Under this category of crime Maidstone has seen a **22.3% increase** in drug offences from Nov 15 – Oct 16 when compared to last year's data. This is an increase from 282 offences to 345 offences; this equates 63 more crimes this year.

Data from the Kent and Medway Public Health Observatory suggests a lower number of admissions to hospital for mental and behavioural disorders relating to psychoactive substances than in the past. 637 admissions from Jul 15 – Jun 16, compared to 734 from Sep 14 – Aug 15. This is a reduction of

13%. Next year's comparable data will provide a clearer picture of what impact the Psychoactive Substances Act has had in related hospital admissions.

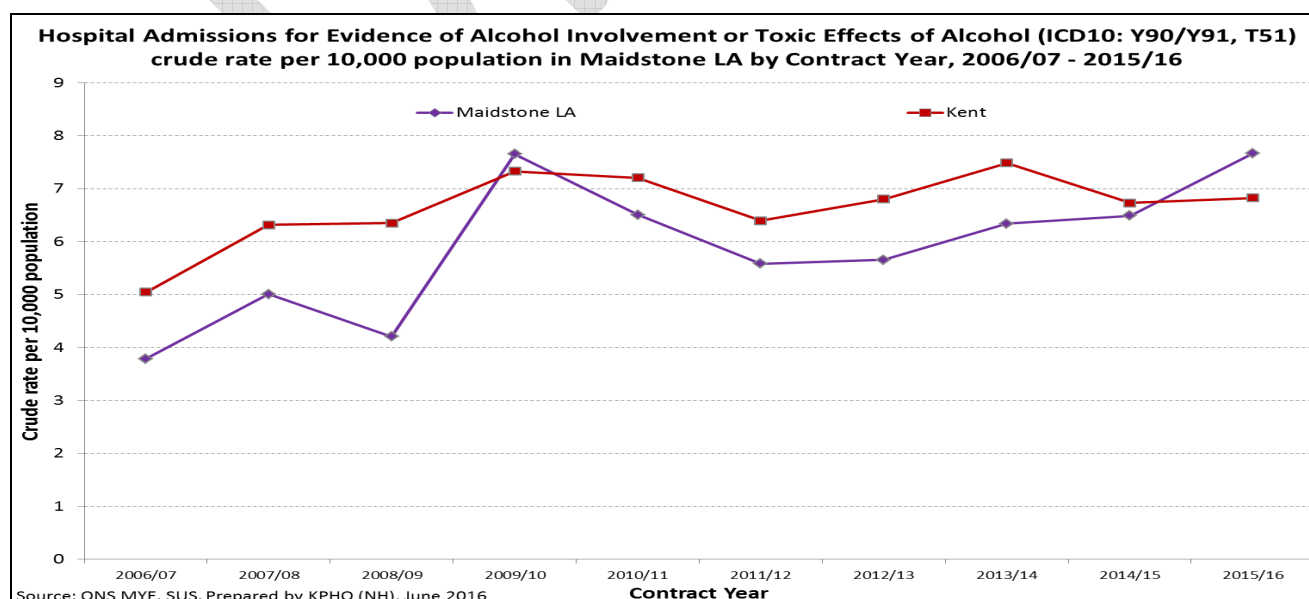
## 5.2 NPS related hospital admissions.

The table below illustrates hospital admissions over 9 years for mental and behavioural disorders (due to psychoactive substance misuse) for Maidstone. It shows a steep rise in Maidstone's figures from 2010/11. This was when NPS use and 'head shops' became more prevalent and publicised in the media. In the last 12 - 24 months, targeted enforcement by the Police and Trading Standards has removed various products from general sale. This, along with the impending PS Act in May 16 and targeted education and support by substance misuse charities has seen admissions start to drop. Again, this will hopefully be more prevalent in another 12 months.



## 5.3 Alcohol related hospital admissions.

This table explores hospital admissions in Maidstone for evidence of alcohol involvement or toxic effects of alcohol covering 9 years to 2015/16. Maidstone generally mirrors Kent's figures and both have seen an upward trend over the period.



## 5.4 Clients in treatment.

The substance misuse charity Change, Grow, Live (CGL) has seen a drop in the use of the 3 needle exchange schemes in Maidstone over the past 12 months:

	January 2016 – December 2016	January 2015 – December 2015	Number difference	% difference
Clients on exchange programme	422	538	116	-21.5%
Clients in treatment	313	316	3	-0.95%

This represents a **21.5% reduction** in needle exchanges despite no relative change in those in treatment. CGL explained that this is due to their recovery programme being very successful with a number of clients completing treatment successfully and/or their injecting status changing.

From April 2016 – December 2016, CGL had 93 positive discharges in Maidstone (31 drug & 62 alcohol). Positive discharge for Opiates is drug free and completion of opiate substitute medication. Alcohol is either abstinence via a detox or reduction regime or controlled drinking – within government guidelines, if that was their goal. Other drugs such as cocaine, cannabis etc can be occasional users but will have made significant reduction/changes to substance misuse.

As at 31<sup>st</sup> December 2016, CGL had 208 clients in structured treatment – 152 Opiate, 41 Alcohol and 15 other drugs.

## 5.5 Substance misuse recommendations.

**Substance Misuse actions and examples of partnership working are covered in the CSP plan. Due to the high level of drug offences in certain wards, and the link between drug offences and other crimes; it is recommended that Substance Misuse remains as a priority.**

## 6. Reducing Reoffending

### 6.1 Availability of 'Proven adult reoffending' data

The 'Proven adult reoffending' data in this Strategic assessment is historic data that does not relate specifically to service users subject to probation involvement. As of June 2014, the former Kent Probation divided into two organisations; National Probation Service (NPS) and Kent, Surrey & Sussex Community Rehabilitation Company (KSS CRC) that manage two separate cohorts of service users. Reoffending data related to the KSS CRC is currently unavailable, with the first publication due for release by the MOJ in October 2017.

As a result of this no information can be used in this strategic assessment that is up to date and is reflective of the current re-offending rate in Kent or Maidstone.

Youth Justice first time entrant's figures for Maidstone have reduced year on year from 1903 new offenders in 2012/13 to 1205 in 2015/16. This represents a **36.6% decrease** over 3 years. This is particularly encouraging as this will help reduce the prevalence of future 'prolific offenders' and the stigmatisation of young people with a criminal record.

## 6.2 Integrated Offender Management (IOM)

Integrated Offender Management (IOM) brings a cross-agency response to the crime and reoffending threats faced by local communities. The most persistent and problematic offenders are identified and managed jointly by partner agencies working together.

IOM helps to improve the quality of life in communities by:

- reducing the negative impact of crime and reoffending
- reducing the number of people who become victims of crime
- helping to improve the public's confidence in the criminal justice system

Division	Cost of Crime		Difference	Number @ Nil Cost 6 Months After
	Months before joining IOM	6 Months After joining IOM		
East Division	£350,435	£146,735	£203,700	22
North Division	£304,899	£159,630	£145,269	10
West Division	£451,812	£503,263	£51,451	20
Total	£1,107,146	£809,628	£297,518	52

In August 2016 there were 178 adult offenders on the IOM cohort in Kent, 96 of which were in prison, this equates to 54% of the overall cohort. From the period of January 15 to December 2015 the members of this cohort were arrested for 238 offences throughout the year compared with 474 offences before they joined the cohort, this is a reduction of 236 cases which equates to 49%. The main reductions were in burglary of a dwelling which saw a reduction of 91 offences.

The individuals in the IOM cohort are prolific offenders and although 31 (38%) of them committed offences, it is a positive outcome that 51 (62%) either committed no offences or had a reduction in offending whilst they have been on IOM compared to the same time period before they joined IOM.

IOM is predominantly populated by male offenders with only 4 women subjected to the process this year.

### West division

West division has the highest IOM cohort with 75 offenders open to the process, this equates to 42% of the overall cohort in Kent and Medway. This is a rise from 63 offenders in August 2015 and has also seen the cost of crime for the West division rise by over £50,000. This rise in the cost of crime for those on IOM this year was because of a change in the period and calculation over which the cohort were monitored before and during their time on IOM. Also if an offender started to reoffend, the values of the crime or associated costs incurred were higher on some occasions and the cohort was larger. Indeed, in Maidstone we experienced a 71% overall reduction in offences committed by the IOM cohort than before they were on IOM. This is slightly under the county average of 81%. For those IOM in the community, 45% in the West division had a reduction in offending.

It was stated that the predominate causes of offender behaviour across Kent related to thinking and behavioural needs which accounts 89% of the attributable needs amongst the cohort, the lowest criminogenic needs mentioned were accommodation (40%), and emotional wellbeing and alcohol abuse which both accounted for 44% of offenders each.

It is clear from the information provided that IOM is a successful way of supporting the most prolific ex-offenders to change their lives.

### 6.3 Reducing Re-offending recommendations.

**Actions to assist in reducing reoffending are in the CSP plan, reducing reoffending rates are key to the reduction of crime and thus fewer victims. In the borough it is considered a theme that spans across all of the other priorities. Therefore the recommendation is made that it is now moved to become a cross cutting theme rather than a specifically named priority.**

## 7. Road Safety

### 7.1 Road Safety in Maidstone

Road traffic is still the biggest cause of unnatural death, injury and harm to the people of Kent, especially young people aged between 5 and 25. Kent County Council is the Highway Authority for Kent and has a Statutory Duty under the Road Traffic Act for road safety with the aim to reduce casualties. The Safer Maidstone Partnership has maintained road safety as priority for the partnership in the past as it recognised the importance of making Maidstone's roads safe.

KSI figures (killed or serious injured) for Maidstone have seen a **decrease of 20.6%** over the three years 2013-2015, 2015 – 50, 2014 – 74, 2013 – 63. This has been achieved despite limited actions or interventions from MBC. However, the number of 17-24 year-olds killed or seriously injured (KSI) as car occupants in Kent rose by 16 per cent from 51 in 2014 to 59 in 2015.

KFRS have opened a 'Road Safety Experience' at Rochester and is the first purpose built, interactive centre of its kind in the UK. It uses powerful stories, exciting interactive experiences and information from experienced road safety experts. The aim is to encourage young people to look at the potential consequences of a road accident from all perspectives – for themselves, their passengers, other drivers and their families.

The Road Safety Experience aims to help young people learn from the experience of others, improve their safety and give them the skills they need to make better informed decisions in all driver and passenger situations.

The Road Safety Experience is set to provide essential road safety skills for young people across the county. The centre is built on the same site as the new Rochester Fire Station on the former Park and Ride site on Marconi Way, Rochester ME1 2XQ.

- It provides supervised education visits for up to 90 young people a day. It is free to all schools, colleges and groups in Kent and Medway.
- The centre is predominantly aimed at 14 to 25 year olds.
- The experience has been designed for schools to spend a total of four hours on their visit.
- There is additional educational content that can be used before or after the students come for their experience.
- The centre will also be available to youth groups.

KCC Road Safety Team and Kent Police have responsibilities and powers in relation to road safety that Maidstone Borough Council and others do not. There are 2 major motorways that run through the borough which contribute to a high number of casualties. Maidstone Borough Council has little or no influence or resources to affect casualty figures on these major routes through the borough.

### 7.2 Road Safety recommendations

**MBC continue to support major organisations with campaigns and initiatives around road safety but have no specific resources to implement anything further themselves. Road safety is therefore recommended for removal as a priority for the SMP due to many organisations having no direct resources, powers or influence in reducing the RTC or KSI figures in the borough compared to the statutory agencies.**

## 8. Community Resilience

### 8.1 Community Resilience topics.

Over the year emerging trends in child sexual exploitation (CSE) extremism and radicalisation, human trafficking, modern slavery and serious organised crime (SOC) have presented as significant issues across the country. To tackle these issues the police have implemented these areas into their Control Strategy

Given the prominence of Kent in regards to its links with Europe through Dover, the Safer Maidstone Partnership supports the control strategy through making a priority orientated around CSE, Prevent, human trafficking, modern slavery and SOC. By including these areas in the strategy it is hoped that the partnership can make our communities more resilient and pre-emptive to those issues.

An SMP Community Resilience subgroup was set up to explore these emerging issues further and discuss how partner agencies could assist with information sharing. This can help build evidence to support police investigations into organised crime groups.

Various presentations from the police Serious Crime Directorate to the subgroup have given a valuable insight into the police control strategy. They have shown partners what types of details to look out for and what to ask when conducting a site visit and showed that some agencies have more powers of entry to businesses than the police. This means that entry to a location can be gained earlier in an investigation.

### 8.2 Local Profiles.

The police Local Profiles have been published for each CSP and for Maidstone highlight the following redacted points for Community Resilience topics:

- **CSE** - No CSE crimes or incidents have been recorded but 21 children at risk of CSE have been identified.
- **Gangs** – A number of London street gangs are associated with the area and drug networks, vulnerable people being exploited.
- **Organise Crime Groups** - There are 8 OCGs with a recorded impact in the Maidstone area. The crime types associated with these groups is commonly drugs related which mirrors the local and national trend.
- **Human Trafficking & Modern Slavery** - There are two car washes in the District linked to human trafficking via intelligence. There are links between a brothel in Maidstone and an OCG. The women being prostituted from these premises are believed to have been trafficked from abroad.
- **Counter Terrorism & Domestic Extremism** – Threat posed by individuals travelling through Kent ports raising funds for terrorism. Combating the threat from unlawful protest from extreme left and right wing groups.

### 8.3 Community Resilience recommendations.

Due to the relatively new nature of partnership working around these topics, it is recommended that Community Resilience topics are retained but because of their complexity, are separated into two priorities – i) Gangs and Organised Crime Groups (including Modern Slavery) and ii) CSE. This will continue to help build on these newly formed relationships and working practices.

## 9. Subsidiary priority relating to Safeguarding (self-neglect & hoarding)

As part of this priority, an emergence of ASB cases relating to hoarding and self-neglect became apparent in Maidstone. ASB was caused by the lack of care residents took over their properties which increased the levels of vermin in the areas they lived in. The SMP had coordinated many multi-agency case conferences to address the issues highlighted by self-neglect and hoarding. Partners involved in this process include adult social services, voluntary and community sector (VCS) organisations with specialism relating to mental health, housing and health, environmental health/enforcement and the CSU.

The coordination of self-neglect cases has proved effective by enabling multiple agencies to support people in the community. This has reduced the environmental health issues and ensured that an ongoing plan is in place to support local residents. It has also led to this process being embedded into agencies case management and is now business as usual.

Following a review of the Maidstone self-neglect & hoarding protocol, the CSU have now stepped back from the tasking & co-ordinating of these cases. There isn't sufficient capacity for an officer to co-ordinate and carry a caseload of complex cases this large. They will however remain as a source of advice & guidance when needed. A case study can be found in Appendix 2.

## 10. Mental Health

Approximately 75% of all cases discussed in the weekly community safety & vulnerabilities group meeting have a degree of mental health associated with them. This is also true of previous self-neglect & hoarding cases. Figures for Section 136 use in the borough (where an individual is sectioned for their own or others safety) have increased year on year for Maidstone and last year it was used 66 times. This is an **increase of 46%** over the previous 3 years.

There is a concerted effort taking place to avoid where possible those with mental health issues from being kept in police custody as a 'safe place' when their behaviour is causing concern. Pilots have commenced elsewhere in Kent for designated places for this use and more access to mental health professionals. A future evaluation will determine what provision suits best and can be rolled out across the rest of the county.

Referrals for young adults and older people had seen a slight increase in most boroughs over the past 3 years (with 1358 and 701 referrals last year respectively). However figures for 2016/17 show Maidstone could be on target for a slight decrease but this won't be known fully until after April 2017.

### 10.1 Mental Health recommendations.

**Because of Mental Health issues being prevalent in so many topics, it is recommended that it be introduced as an SMP priority in its own right. One aim for example could be for all agencies to identify vulnerabilities early, and signpost clients to appropriate support.**

## 11. Unlawful Encampments (UE's)

The last 12 months have seen a total of 9 unlawful encampments set up on Council owned land. Approximately 5 others have been reported that were on private land. The associated officers time, legal & environmental costs are estimated to be put at thousands of pounds. An area wide working group was set up to review the Unlawful Encampment protocol. The aim of which was to explore more expedient ways of managing UE's, thus reducing time, costs and the escalation of potential environmental damage. A revised protocol and documents will be published by the end of the financial year 2016/17 and will see a wider range of enforcement options at our disposal, dependent on the threat and risk the UE's present to predominantly publically accessible land.

## 12. Recommendations to Safer Maidstone Partnership

Our priorities for this year have been extracted from a wide variety of information shared with our partners and represent the most important issues to focus on this (2017/18) year. Based on the information in this Strategic Assessment, it is recommended that the Safer Maidstone Partnership confirm the following 2017/18 priorities:

- 6. Gangs and Organised Crime Groups (including modern slavery);**
- 7. CSE;**
- 8. Substance Misuse;**
- 9. Domestic Abuse and other violent crime;**
- 10. Mental Health (including identification of vulnerabilities).**

These priorities have also been borne out by the scoring matrix used in 'MoRiLE' which ranked these priorities based on threat risk and harm to the public and organisations.

Prevent and Reducing Reoffending are now cross cutting themes rather than named priorities along with ASB. All the priorities will require a robust multi-agency response, but because they are important for residents and communities, achieving them will have a positive impact on people's quality of life.

## 13. How to get further information

If you would like further information about the Safer Maidstone Partnership, please contact: Community Partnerships & Resilience Team, 6<sup>th</sup> Floor, Maidstone House, King Street, Maidstone, Kent ME15 6JQ. Tel: 01622 602000. [www.maidstone.org.uk](http://www.maidstone.org.uk)

## Appendix 1

### Information sources

The list below includes the details of those data sources used to inform this strategic assessment, including the agency supplying the data. All information was correct at time of document production.

#### Kent Community Safety Unit crime data – Safer Communities Web Portal

All data provided by the County CSU is using recorded crime data provided by the Business Information Unit at Kent Police. This data places the incidents at the time at which they were recorded by the Police.

#### Kent Police Intelligence Analysis data

Data provided by Kent Police is 'committed' data. The 'date' used is the midpoint between the earliest and latest dates that the offence could have been committed.

#### Other data sources

Data and information used in producing this Assessment has been provided, directly or otherwise, from the following organisations:

Association of Chief Police Officers  
 Association of Police Authorities  
 Association of Public Health Observatories (PHO's)  
 Choices DA Services (formerly North Kent Women's Aid)  
 Her Majesty's Inspector of Constabulary  
 Home Office  
 iQuanta  
 Kent Community Wardens  
 Kent County Council  
 Kent Fire & Rescue Service  
 Kent Highways  
 Kent Police  
 Nomis  
 ONS Labour Market Statistics  
 National crime agency

## Appendix 2

### Community Wardens:

#### Case 1:

KCC Warden was first made aware of LC when they took over 'Area' on a temporary basis from a previous Community Warden approximately 2 years ago. LC was living on approximately £72 a month. She was not receiving benefits. She often went to the local supermarket and bakers to get food to tide her by, free of charge. They referred her to AgeUK to obtain a benefit check and help with probate/debts accrued. LC's husband had passed away a couple of years ago and the mortgage and other debts were not being paid. She was at risk of having her property repossessed. Details were provided of Step Change Debt Charity and also obtained food parcels from the Salvation Army.

Accompanied LC to the Bank, raised a concern that she held an account that charged her a monthly fee even though she was not using it. She was struggling to get by. The bank agreed to refund approximately £1600 in monthly fees and interest and charges on another account.

Her dog was being fed by the RSPCA. However LC contacted the Warden stating that the RSPCA had scheduled to remove the dog from the property due to the conditions. The dog was never walked & they offered to rehome her at a local farm. This was LC's preferred option.

LC's property was in a filthy condition with dog faeces and urine throughout. She was hoarding large amounts of items. They arranged for a home visit from MBC Environmental Enforcement to visit the property – an order was made to ensure that the property was deep cleaned and decluttered. KCC helped her to declutter a large amount of items. There was a water leak in the property and so MBC Private Sector Housing were contacted, who agreed to repair the leak.

Spoke to the GP and raised concerns about LC's mental health. They organised a mental health assessment where she was deemed to have capacity. LC mentioned that her Sister-in-Law had been taking LC's medication and so they notified the GP in order to limit the amount of prescribed medication.

Encouraged LC to go to the AgeUK Day Centre each Friday as she wanted her to mix with other people. Concerns had been raised that her sister-in-law was constantly harassing her all the time. The aim was for LC to have something to do, without her sister-in-law. LC obtains 2 more dogs and 2 cats. The RSPCA were notified and they agreed to do six monthly checks.

Another Warden took over 'Area' approximately 14 months ago, they continued to do joint visits. Working with AgeUK to continue to sort out her finances and mortgage and probate. LC stated that she no longer wanted her cats and so we rehomed them at Cat Protection. During Multi-Agency meetings we discussed the possibility of moving LC to Housing Association property as she was due to be evicted in the near future. KCC Warden and Community Safety (MBC) agreed to bid for properties on LC's behalf with her consent.

Wardens both accompanied LC to view a property and take her to Golding Homes to sign the tenancy agreement for a property elsewhere in the borough. Organised a local church group to assist in moving large items of furniture etc. to LC's new property. Social Services helped us to clean the furniture as it was brought in. AgeUK arranged for some offcuts of carpet to be fitted and installed LC's washing machine and a lady at the local library service donated a bed. Obtained a free electric oven and managed to get a fully qualified electrician to install it free of charge.

Social Services have put Kent Enablement in place before care was organised in order to encourage her to keep the property clean and tidy, look after her personal care and take care of her two dogs. She exceeded her overdraft when the first payment for rent was due. Wardens accompanied her to speak to the Bank Manager in order to prevent a daily charge until her finances had been sorted out and they were concerned that LC would go in to rent arrears with a few weeks.

Warden has taken LC in to 'Area' on a few occasions in order to ensure that she has had sufficient food until she has got confidence to use the local buses. LC is reluctant to travel because she is afraid of getting lost. They printed out the local bus timetables to get LC used to the bus routes. Whilst at the new property it was discovered that LC had a defective timer control for her gas central heating. The electrical wiring was exposed. Arranged for Golding Homes to repair it as a matter of urgency and this was done. KCC Wardens continue to do weekly visits where possible.

**Priority Target Achieved:** Safety and wellbeing.

### **Case 2:**

Following calls from a neighbour and a relative I visited an elderly resident in 'Area'. She had a severe stroke several years ago which has limited her mobility and her ability to communicate clearly. She lives alone in a cottage which, although in the centre of 'Area', is isolated. Quite often it is easier for her to sleep in her armchair which is located next to a ground floor window.

For some months she has occasionally seen torchlight in her garden during the night, usually around 0300 hours. She states that her door handle has been tested too. At first she was not concerned because she assumed a neighbour was checking on her welfare. She has now spoken to the neighbour who states that it was not them.

Due to her communication difficulties she is unable to effectively communicate on the telephone so the incidents have not been reported to the police.

The resident, her granddaughter and I discussed additional security measures including lighting, door locks and window locks. I subsequently provided details of various products listed on the internet and a list of security companies from CheckaTrade.

The resident has a lifeline installed. While there I spoke to the call centre and explained the situation. The operator has updated the residents file accordingly. If there is another incident they will contact the police on the resident's behalf.

I will continue to call in on the resident from time to time. I have also asked the granddaughter and the neighbour to report any future incidents to the police as soon as possible and to also keep me updated.

### **Case 3:**

Overview: Lady with Dementia

Spoke with residents who were concerned of an older lady walking looking lost and asking about the fences in 'Area'. Couldn't find her but a resident managed to find out where she lived as she saw her the next day. Luckily before I went to visit the lady's cousin phoned me to say that he was very stressed with the amount of care she needed to keep her safe and they had sought help with her dementia through the doctors surgery where she was confirmed as having dementia. I met with the family and referred her to the social care Coordinator and asked them to give the family more support and options.

I then went to meet this lady, she was a lovely lady who was charming, we got speaking and I mentioned that 'Area' has a café that is very friendly and that I like going. She was very pleased to hear there was a cafe and said she had never been there before, which the cousin confirmed. One of the worries of the family was that she was not eating. Since that visit I have confirmed with the café that she goes regularly and it's in her daily routine now. She stills needs regular visits and assessment from social care team giving the next of kin more options but it's made me think about getting the staff officially trained as dementia friends at 'Area' Café.

## Appendix 3

### Methodology Notes:

#### SPC Charts Explained

Statistical Process Control (SPC) Charts are a tool used by Kent Police to help identify whether there has been any significant improvements or deteriorations in a particular crime type.

When a category is stable and in control, the data will appear within a set of predicted limits based on past knowledge and experience. Although there will be some natural variation around the average (*also known as common cause variation*) as long as the figures remain within the control limits there has been no significant changes to what was anticipated.

If the category was unstable and displayed uncontrolled variation (*also known as special cause variation*), the data would not follow a predicted pattern and would indicate that something had changed and action might be required.

*Natural variation indicates that any change from month-to-month is expected, e.g. the time you come to work every day varies by a few minutes around an average, however if there was an accident on the road then the time taken to come to work would be significantly longer, this would be unnatural variation indicating that something has gone awry.*

SPC charts are generated based on historical data to produce the following:

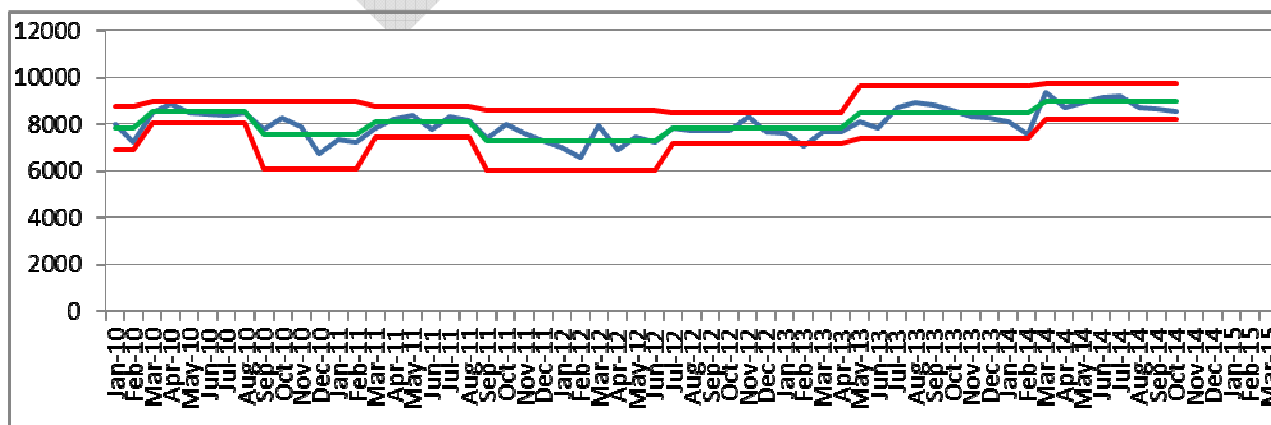
- The Centre Line (CL) which is the average no. of recorded crimes / incidents
- The Upper (UCL) and Lower Control Limits (LCL) which are the limits of natural variation

Any result above the UCL suggests that there may be a problem. In addition, other indications that a category is out of statistical control includes when several results in a row are above the CL or when several results in a row show an increasing trend.

If the figures are consistently below the CL this indicates an improvement and will result in the centre line and the control limits being lowered, often referred to as a 'step change'. Similarly if the figures for a specific category rise due possibly to an increase in activity; a revision to the data (i.e. back-record conversion); or possibly a change in what is recorded within each category then the CL and control limits may need to be raised.

NB. If the control limits are closer together this indicates a low level of variation around the average and shows that the category is in control, a wider gap between the limits indicates greater variation and less control.

Example of a Kent Police SPC Chart:



## Appendix 3

### **MoRiLE:**

The Kent Community Safety Unit has explored the use of the MoRiLE (Management of Risk in Law Enforcement) scoring matrix to look at ranking offences based on threat, risk and harm. Maidstone Borough Council and others in Kent have incorporated this methodology within this year's Strategic Assessment.

The ideology behind MoRiLE is that it targets resources at offences that would have the biggest impact on individuals and organisations/areas. This is in contrast to concentrating solely on crime figure tables which can sometimes provide a skewed view on threats and risk based only on the frequency/volume of crimes.

Each thematic crime area is scored individually against various criteria. There is then a formula that calculates a final score. These are then ranked high to low, listing priorities based on threat, risk & harm which can then contribute to the SMP's final recommendation of priorities.

### **Serious Organised Crime Local Profiles:**

#### Aims:

- To develop a common understanding among local partners of the threats, vulnerabilities and risks relating to serious and organised crime.
- To provide information on which to base local programmes and action plans.
- To support the mainstreaming of serious and organised crime activity into day-to-day policing, local government and partnership work.
- To allow a targeted and proportionate use of resources.

#### Purpose:

- Local Profiles should inform local multi-agency partnerships, in particular police and crime commissioners, policing teams, local authorities and other relevant partners (such as education, health and social care and Immigration Enforcement); of the threat from serious and organised crime and the impact it is having on local communities.

#### What do we do with the Local Profile?

- The profile outlines key serious and organised crime issues within your district and provides information on what the offences are, what to look for and recognised serious and organised crime within your community and what to do if you see or suspect anything. This allows us all to PREVENT young people and vulnerable adults from becoming involved in crime and helping to protect and safeguard those that may already be involved through identifying and working together.