



# **Safer Maidstone Partnership**

## **Community Safety Partnership Plan 2013–2018**

### **'Delivering Safer Communities'**

**Refreshed February 2016**

#### **1. Introduction**

Welcome to the annual refresh of the Safer Maidstone Partnership (SMP) Community Safety Partnership Plan for 2016-17. This document outlines how we are going to collectively tackle community safety issues in the Maidstone borough, how we have achieved against the targets set in the previous year and what we will prioritise this year.

#### **2. Background**

The Maidstone Community Safety Plan 2013-18 is a five year rolling document, which highlights how the SMP plans to tackle local community safety issues that matter to the local community. The plan is revised annually through reviewing information set out in the Strategic Assessment which ensures that current issues can be taken into account and used to direct the SMP's strategy.

#### **3. Priorities**

Data analysis identifies that we continue to face challenges across our district and as such this year the SMP has agreed to focus on five key issues:

- Reducing Re-offending
- Road Safety (killed or seriously injured)
- Substance Misuse
- Violent Crime (domestic abuse/night time economy)
- Community Resilience (Prevent, CSE, SOC, Modern slavery and Human trafficking)

Anti-Social Behaviour (ASB) has been a priority since the formation of the Safer Maidstone Partnership. It has however been removed as a priority this year as it is felt that ASB should be a service the council automatically delivers as part of its strategy. Effective protocols are embedded into the Community Safety Unit (CSU) through the weekly CSU/ASB meetings. Golding Homes, the local housing provider which has a stock of around 6000 properties in Maidstone, currently co locate within the CSU to aid information sharing and create joint solutions for ASB.

ASB is a cross cutting theme that is linked to substance misuse, road safety, domestic abuse and reducing reoffending and as such is well accommodated under the priorities selected. It is recommended that the ASB sub group will remain intact and will convene as and when issues outside of the current protocols arise. These issues will include the Community Trigger, alterations to ASB legislation and changes to the current arrangements

already embedded into the CSU. In 2015 there were no Community Trigger applications for the Maidstone borough.

#### **4. Background and Context**

The Crime and Disorder Act 1998 changed the way crime and ASB was to be tackled. It recognised that in order to be effective, agencies needed to work together to address the issues collectively. Each local area formed a Crime and Disorder Reduction Partnership (CDRP) which are now called Community Safety Partnerships.

The Safer Maidstone Partnership is made up of Responsible Authorities (those bodies for whom membership of the CSP is a statutory obligation) and voluntary members. Our statutory partners are: Maidstone Borough Council, Kent County Council, Kent Police, Kent Fire and Rescue Service, National Probation Service, Kent Surrey and Sussex Community Rehabilitation Company and the Clinical Commissioning Groups (which have the responsibility for health services locally).

We also work with a large number of public and private sector partners as well as voluntary and community groups to collectively implement and deliver initiatives that will help all areas of the Maidstone borough become a safe place to live, work and visit.

#### **5. Organisational changes – a local overview**

##### **Safer Maidstone Partnership (SMP)**

The SMP brings together people from local government, the NHS, Police, Fire service, Probation, local businesses, housing providers and voluntary and community organisations. They work as a team to tackle issues such as crime, education, health, housing, unemployment and the environment in the Maidstone Borough.

SMP membership is made up of the public sector agencies including Kent County Council, Maidstone Borough Council, Kent Police, Office of the Kent Police and Crime Commissioner, NHS Health Trusts, Kent Fire and Rescue Service, National Probation Service, Kent Surrey & Sussex Community Rehabilitation Company and also incorporates members from other key partners including Maidstone Mediation, CRI, Golding Homes and Town Centre Management. The SMP is currently chaired by Alison Broom, Chief Executive of Maidstone Borough Council.

##### **Community Safety Unit**

The Maidstone Community Safety Unit (CSU) continues to grow. In recent years, existing Borough Council and Kent Police staff have been joined by partners from Kent Community Wardens and local housing Registered Providers, such as Golding Homes. In 2014, the Borough Council's licensing team relocated to the CSU. Increasing the range of partners working as part of the CSU is a key priority to ensure community safety related issues are tackled holistically.

##### **Kent Police**

Three policing divisions, North, East & West ensure local policing is at the heart of the new Policing model and there has been a significant increase in neighbourhood constables and sergeants to provide strong local leadership across the county.

##### **Kent Police and Crime Commissioner (PCC)**

PCC's are responsible for the appointment of Chief Constables, holding them to account for the running of the force, setting out a Police and Crime Plan based on local priorities, setting

the local precept and force budget and making grants to external organisations. The current PCC for Kent, Ann Barnes, was appointed in November 2012 and will remain in office for a period of four years.

The PCC has pledged to continue to support a number of agencies through the main policing grant and has announced her commitment to her wider duties around crime and community safety. Funding for Community Safety Partnerships has been confirmed for 2016/17 and will be used to address our local priorities. The PCC has announced that there will be no in year targets and that there will be a focus on encouraging sustainable improvements in performance.

The Kent Police & Crime Plan is a four year plan from 1 April 2013 to 31 March 2017 and is refreshed annually. The plan sets out the Commissioner's vision and priorities for policing in the county which includes placing victims first, focusing on reducing crime and anti-social behaviour and protecting the public from harm. To achieve the aims set out in the plan the following strategic priorities are set out:

Cutting crime & catching criminals

Ensuring visible community policing is at the heart of Kent's Policing model

Putting victims and witnesses first

Protecting the public from serious harm

Meeting national commitments for policing

Delivering value for money

The plan also references a commitment to working closely with community safety and criminal justice agencies across the county to ensure that a seamless service is provided to victims of crime and anti-social behaviour, with a particular focus on:

Tackling the root causes of crime and anti-social behaviour

Reducing re-offending and repeat victimisation

Improving joined up working between agencies

### **Maidstone Families Matter**

The Government has placed a significant focus on tackling the 'Troubled Families' agenda. The Department of Communities and Local Government (DCLG) defines a troubled family as a family with multiple and complex issues and has estimated that these families cost the tax payer £9 billion a year.

The project is now in its second phase after a very successful first three years and is set to target a further 400,000 families nationwide. To ensure this is achievable, KCC have restructured their preventative services to support families holistically. Each family referred to Early Help (the new preventative service that has been created) will be screened for the widened troubled families' criteria which are as follows:

Financial exclusion (rent arrears, claiming out of work benefits and debt)

Crime and anti-social behaviour

Educational difficulties (poor school attendance, exclusion and head teachers concern)

Health issues (Not signed up to a GP, poor mental health, Substance misuse and obesity etc)

Domestic Abuse

Children in need (open to social services or referred to early help)

Families meeting two of the above criteria will be provided with holistic support which is aimed at reducing ASB, improving school attendance, reducing rent arrears and safeguarding children.

The Troubled families' project in Maidstone which is locally known as 'Maidstone Families Matter' is delivered by the borough and county council through a district partnership manager who oversees the allocation of family intervention project workers who alongside Early Help, seek to turn families around.

### **West Kent Clinical Commissioning Group**

Since 1 April 2013, Clinical Commissioning Groups (CCG's) have become 'responsible authorities' on CSP's. Schedule 5, Paragraph 84 of the Health and Social Care Act 2012 replaces primary care trusts with CCG's as responsible authorities on CSP's from April 2013. This means that the CCG's now have a statutory responsibility to work in partnership with other responsible authorities to tackle crime and disorder. The act places a duty on CCG's to:

- Participate in a strategic assessment of crime and disorder, anti-social behaviour, and drug and alcohol misuse for the CSP area or areas in which they fall.
- Contribute to the development of local strategies that effectively deal with the issues where are identified.

Joining their local CSP's gives CCG's more influence in shaping local action to tackle crime and the causes of crime, for example the delivery of action on drugs, alcohol, crime and disorder.

### **Health and Wellbeing Board**

The West Kent Health and Wellbeing Board brings together key organisations and representatives of the public to work together to improve the health and wellbeing of the people of West Kent.

It has been set up in West Kent as part of the recent national health and social care reforms. Kent Public Health, the four West Kent authorities (Maidstone, Sevenoaks, Tunbridge Wells and Tonbridge & Malling Borough Councils), West Kent Clinical Commissioning Group, (who are responsible under the reforms for commissioning health services locally) and patient and public representatives are all part of this Board.

The key themes for health and wellbeing are drawn from the West Kent Joint Strategic Needs Assessment.

### **Probation Services**

The Probation services have officially separated into the National Probation Service (NPS) and the Community Rehabilitation Company (CRC). The NPS is a statutory criminal justice service whose supervision and support includes not only Service users who have never been in custody and have only solely been in the community, but also high risk offenders who are released into the community; this service is provided nationally by the government. The CRC supports the rehabilitation of low to medium risk offenders and is commissioned out to private companies. Kent is covered by the Kent, Surrey and Sussex Community

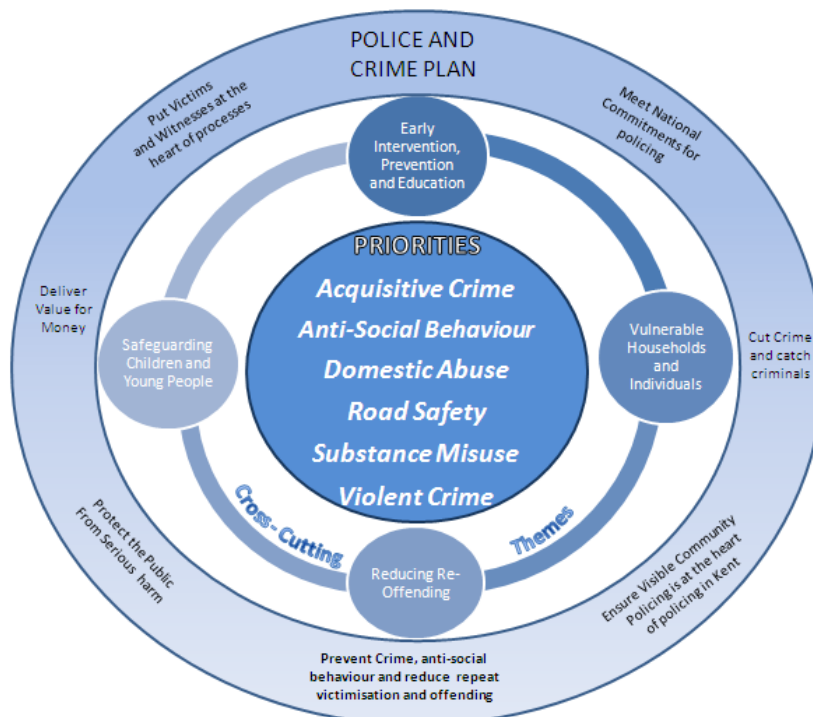
Rehabilitation Company (KSS CRC) who alongside the NPS, play an active part in the SMP's partnership.

### The Kent County Perspective

The Community Safety Agreement (CSA) for 2014-17 outlines the key community safety priorities for Kent and replaces the previous agreement which expired on 31<sup>st</sup> March 2014. Data analysis, partnership consultation and examination of the most recent local strategic assessments indicated that the priorities and most of the cross-cutting themes identified in the 2011-14 Agreement should remain, and would continue to benefit from support at a county level.

The common issues and priorities from the District-level strategic assessments have been identified and key stakeholders consulted to identify any potential gaps and cross-cutting themes for inclusion in the agreement. The diagram below not only includes the priorities and cross-cutting themes for the CSA, but also shows the strategic priorities set out in the Police and Crime Plan, illustrating the importance of integrating the work of all partners.

The CSA will be refreshed shortly due to emerging trends from the police and other community safety partners:



## 2016 Strategic Assessment summary

Each year the Safer Maidstone Partnership has to produce a Strategic Assessment of the district to identify any crime and disorder trends, which can then be used to inform the priority planning for the coming year. This ensures we are focusing our efforts collectively on the areas that are most in need. This is done by analysing data and intelligence reports from the previous year, which is usually 1 October 2014 to 30 September 2015 to produce recommended priority areas the data is telling us are a concern or that residents have highlighted.

The priorities are then compared with other areas and ranked against a number of factors, including volume, trend over time, resident's perception and how much it is felt the partnership can influence. This is then reviewed by our stakeholders and finally the top ranked priorities are analysed in depth, to help guide practitioners in formulating actions that they feel will have an impact on each priority. The following areas were identified by this process and recommended as emerging priorities for the 2016-17 Partnership Plan:

### **Substance Misuse – including alcohol and NPS**

Substance misuse relates to the use of drugs, alcohol and New Psychoactive Substances (NPS) also known as 'legal highs'. Neither alcohol nor NPS are included in the recorded drug offences as they are both legal. It is however important to mention alcohol and NPS as there is a clear connection between criminal activity and the excessive use of these substances.

Kent police recorded drug offences include both offences of drug supply and possession. Under this category of crime, Maidstone has seen a 35.3% reduction in drug offences when compared to last year's data. This is a reduction from 431 offences last year to 279 offences; this equates to 152 fewer crimes this year.

Despite this noticeable reduction in recorded drug offences data from the Kent and Medway Public Health Observatory suggests a higher number of admissions to hospital for mental and behavioural disorders relating to psychoactive substances.

**Due to the Increasing levels of hospital admissions related to substance misuse, recommendation is made that substance misuse including alcohol and NPS remains as a priority.**

### **Current projects**

- Targeted multi-agency evening operations have been delivered with Trading Standards, Kent Police and Borough Council teams to tackle underage sales and licensed premises.
- Partners launched an NPS awareness campaign aligned with national campaigns.
- Addaction have delivered 2 well attended professionals training days around NPS to Teachers, Police, NHS and Early Help frontline staff.
- Bespoke NPS programme delivery by Addaction to targeted cohorts of young people through schools and temporary accommodation providers, funded through the PCC fund.
- Through CRI, recommenced a needle exchange scheme in a Week Street pharmacy. In Quarter 3 of 2015/6, there were 527 exchanges in this new location.
- Implementing the SMP's actions from the West Kent Alcohol Action Plan, the Kent Alcohol Strategy and continue to work closely with the West Kent Health & Wellbeing Board.
- Maidstone Substance Misuse Action Plan brings together priorities from the Community Safety Plan and Maidstone Health Inequalities Action Plan.

- The Council is part of the evaluation panel for exploring single use retractable 'Smart Syringes' – no needle stick injuries/sharing issues.
- Working with Licensing and Kent Police around a voluntary 'Reduce the Strength' scheme for the town centre.
- KCC Trading Standards successfully used forfeiture orders to tackle NPS across Kent, including 'head shops' in Maidstone, who did not oppose the application and have been closed down.
- Increased number of street population referred and engaged in CRI support services as a result the Maidstone Assertive Outreach programme.
- Service provision provided by CRI has been integrated into the partnership. Outreach workers have delivered additional sessions to engage with hard to reach individuals (e.g. street population) misusing substances.
- Part funded 'Theatre ADAD' to deliver the 'WASTED – drug & alcohol education' to 29 primary schools in the borough, this highlights to year 6 pupils the dangers of substance misuse.
- Needle bin pilot launched in Brenchley Gardens, reducing needle finds by 50%.

## 5.5 Reducing Reoffending

Reducing re-offending across the age range is a Government target for all CSP's. This is particularly important when those who have already been through the criminal justice system commit over half of all crime.

Reoffending data related to the NPS and the Kent Surrey & Sussex Community Rehabilitation Company (KSS CRC) is currently unavailable, with the first publication due from the MOJ in October 2017. This has unfortunately meant that reoffending data is unavailable.

However, the Integrated Offender Management (IOM) programme which is tasked with reducing reoffending rates of the most prolific offenders has reported a reduction of 32% in offending from the West Kent cohort compared with last year.

**The recommendation is made that Reducing Re-offending remains as a priority, being a cross cutting theme across all priorities**

### Current projects:

- A steering group was established involving all key agencies to provide strategic direction to the Integrated Offender Management (IOM) and Deter Young Offenders (DYO) groups.
- Restorative Justice has become an embedded process within IOM. All offender managers have been briefed in relation to the process and benefits of these approaches.
- Awarded £10,000 funding from Kent PCC towards Restorative Justice Programme.
- Employability and physical activity have been provided as part of the IOM process by making gym memberships and training opportunities available to IOM offenders.
- Community Payback scheme used by Maidstone Borough Council and some parish councils.
- Electronic 'Buddy' tracking is being piloted in partnership between Kent Police and Probation. At present this can only be undertaken with the agreement of the offender.
- Yes Plus and Challenger Troop commissioned to provide diversionary and personal development programmes at Kings Reach Pupil Referral Unit (PRU).
- Exploring further interventions through public health to assist ex-offenders where substance misuse and/or mental health issues are prevalent.
- Referring often homeless ex-offenders to housing providers and ensuring they have access to physical, mental and sexual health services.

## **5.6 Road Safety (killed or seriously injured - KSI)**

Maidstone has had the highest rate of road traffic collisions in Kent for the 5th year with 709 collisions recorded from July 2014 - June 2015. This is an increase of 2.3% from last year. We have the second highest increase in the County and are well above the Kent averages where an overall 3.2% reduction was achieved.

**Due to the high numbers of Road traffic collisions in Maidstone, recommendation is made that Road Safety remains as a priority.**

### **Current projects:**

- Identified hotspots of concern.
- Identified repeat offenders for speeding and promoted Speedwatch.
- Held multi-agency events around speed enforcement and safety.
- Delivered Safety in Action programme to all primary school children transitioning to secondary school, providing road safety education and pedestrian awareness.
- Promoted walking buses and 20 MPH zones around schools.
- Promoted bus safety driver and pedestrian awareness
- Signposted to bicycle and marking events
- Created a road safety awareness DVD for Schools
- Piloting a road safety project in partnership with Kent Fire and rescue, community wardens, parking enforcement, local schools and Kent police.

## **5.7 Violent Crime (domestic abuse)**

It is widely recognised that increased recorded incidents of domestic abuse are not necessary indicators of a worsening situation. Domestic abuse is an under-reported crime so that increased reports indicate that DA victims are coming forward to report the abuse they are suffering.

Between the periods October 2014-September 2015 Maidstone has recorded 2278 incidences of Domestic abuse. This is below the Kent average when compared to number of incidents per 1,000 population. Whilst our incidences are lower than the average in the county our rate for repeat victims is the second highest in Kent with a 26% rate of repeat victimisation.

**Due to the high levels of domestic abuse and repeat incidents, recommendation is made that Violent Crime (domestic abuse) remains as a priority for the partnership, focusing on those areas with frequent reports of domestic abuse.**

### **Current projects:**

- Partners have continued to run regular seasonal awareness campaigns aligned with national campaigns.
- Work Place Health employee awareness campaign launched.
- Supported the Freedom programme and Independent Domestic Violence Advisor (IDVA) service.
- Facilitated support for Specialist Domestic Violence Court workers.
- Promoted and supported the Community Domestic Abuse Programme (CDAP).
- Referred all High Risk cases to Multi-Agency Risk Assessment Conference (MARAC).
- Provided support to male and female victims of DA through Choices



- Promoted the DA Schools Project (SAFE).
- Provided support for male offenders wishing to rehabilitate.
- Helped facilitate the Sanctuary Scheme and assisted 49 victims to stay in their properties by making home security improvements
- Increased referrals for domestic abuse victims who are street homeless.
- Assisted in providing a domestic abuse One Stop Shop in the borough.
- Domestic Homicide review training undertaken by Community Safety Unit.
- Delivered targeted training to internal and external teams and supported the process of creating champion roles.

### **Violent Crime (night-time economy)**

Violent crime covers a wide range of crimes, from assault by beating through to grievous bodily harm, and murder. Please note however, the crime types which have been most affected by changes to recording practices are violence related offences, including Assault and Violence Against the Person (VAP).

This has resulted in a significant number of crimes added back during the year. With this change in recording, it is not safe to directly compare the current year with previous years. This year has therefore seen a 12.5% increase in violent crime. Whilst Maidstone has seen the 4th highest yearly rise in Violent crime per 1,000 of the population in Kent, Maidstone is still ranked 6th in the county for violent crime and is lower than the county average.

### **Current projects**

- In conjunction with Pubwatch, excluded violent individuals from the Town Centre premises.
- Promoting the work of the Taxi Marshal Scheme and town centre Street Pastors initiative.
- Shared information proactively from CCTV control room and Kent Police via MaidSafe network radios provided to door staff of key premises.
- Used CCTV to protect and prevent crime.
- Promoted the 'Urban Blue Bus' initiative.
- Enforced Alcohol Control Zones.
- Supported the county-wide Hate Crime Reporting Line.
- Provided school based work (Don't Abuse the Booze project) with high risk individuals around violence and drugs.

Whilst the partnership delivers these proactive activities, further work needs to be done to ensure a reduction in violent crime. The emergence of NPS and rise in practices such as pre loading are all contributing factors that add towards the increase in violent crime.

**Due to the continuing rise in violent crime in the night-time economy, recommendation is made for drug and alcohol related violence in the night time economy to remain a priority for the partnership.**

**(This also links in with the cross cutting themes of substance misuse, domestic abuse and reducing reoffending).**

## Community Resilience

Over the year emerging trends in Child Sexual Exploitation (CSE), extremism and radicalisation (Prevent), human trafficking, modern slavery and Serious Organised Crime (SOC) have presented as significant issues across the country. To tackle these issues the police have implemented these areas into their Kent Police Control strategy.

Given the prominence of Kent in regards to its links with Europe through Dover, it is recommended that the Safer Maidstone Partnership supports the Control strategy through making a priority orientated around CSE, Prevent, human trafficking, modern slavery and SOC.

By including these areas in the strategy it is hoped that the partnership can make our communities more resilient and pre-emptive to these issues. To ensure the SMP can respond effectively to these issues it is recommended that the sub group incorporates all of these into its action plans as the actions and responses will be similar. These actions will look at preparing, preventing and protecting against the issues highlighted in the Control strategy.

The SMP has already raised awareness of the Prevent strategy through providing internal and external training opportunities, integrating CSE into the councils new safeguarding policy and adapting internet safety training sessions around the agenda of grooming for the purpose of CSE and Prevent.

## Cross Cutting Themes

Data analysis also acknowledged that the priorities are often inter-related and has identified three distinct cross cutting themes that run through all of the priority focus areas. Actions contained within this plan are therefore built around the five identified priorities and three cross cutting themes, as shown in the chart below:

| Cross cutting themes                            |                    |                      |                   |                                      |
|-------------------------------------------------|--------------------|----------------------|-------------------|--------------------------------------|
| Reducing Reoffending                            | Domestic Abuse/NTE | Community Resilience | Road Safety (KSI) | Substance Misuse (including alcohol) |
| Targeting prolific offenders / repeat locations |                    |                      |                   |                                      |
| Safeguarding vulnerable and young people        |                    |                      |                   |                                      |
| Prevention and early intervention               |                    |                      |                   |                                      |

## How we are going to tackle these issues

The SMP has created an action plan detailing how each priority will be addressed, which is shown in section 7. These activities range from revising current processes to ensuring that services are delivered as effectively as possible, creating value for money and also commissioning new services and projects in areas of need. The SMP is committed to achieving these priorities and has set targets against what we are planning to achieve, shown in item 8.

## Priority leads

Lead officers for each of the priorities have been identified as set out below and have the responsibility for developing and delivering, with partners, the action plans to deliver the Maidstone borough priorities.

The leads will also act as a champion for the designated priority and provide regular progress updates for the Safer Maidstone Partnership and the borough council's Community, Housing and Environment Committee as required.

| <b>Priority sub-groups</b>                       | <b>Lead Officer/Agency</b>                 |
|--------------------------------------------------|--------------------------------------------|
| <b>Anti-Social Behaviour</b>                     | Inspector Jody Gagan-Cook, Kent Police     |
| <b>Substance Misuse</b>                          | Nic Rathbone, Maidstone Borough Council    |
| <b>Reducing Re-Offending</b>                     | John Littlemore, Maidstone Borough Council |
| <b>Road Safety (killed or seriously injured)</b> | Sam Scales, Maidstone Borough Council      |
| <b>Violent Crime (domestic abuse &amp; NTE)</b>  | Inspector Jody Gagan-Cook, Kent Police     |
| <b>Community Resilience</b>                      | TBC                                        |

## 6. Maidstone Community Safety Partnership Action Plan and Targets

The Action Plan sets out a series of actions and performance targets through which the priorities supporting the CSP Plan will be delivered for the period 2013–2018. The Action Plan makes clear arguments for building stronger and safer communities in Maidstone, with the actions identified against each priority supporting the overarching aim to reduce crime and disorder and its impacts. The plan will be reviewed annually to allow for new projects and priorities to be added.

### Priority 1: Antisocial behavior

| Aim                                                                                                                                                                                                                                                                                                                                                                                              | Action                                                                                                                                                                                                                                                                                                    | Anticipated Outcomes                                                                                                                                                                                                                                                                        |                             | Lead Agency                                                                                          |
|--------------------------------------------------------------------------------------------------------------------------------------------------------------------------------------------------------------------------------------------------------------------------------------------------------------------------------------------------------------------------------------------------|-----------------------------------------------------------------------------------------------------------------------------------------------------------------------------------------------------------------------------------------------------------------------------------------------------------|---------------------------------------------------------------------------------------------------------------------------------------------------------------------------------------------------------------------------------------------------------------------------------------------|-----------------------------|------------------------------------------------------------------------------------------------------|
| <p><b>To work in partnership to reduce incidents of ASB towards repeat or vulnerable victims / locations, targeting rowdy nuisance behaviour, fly-tipping and noise.</b></p> <p><b>To reduce the perception of the local community that believes ASB is a large problem in their local area, with emphasis on noisy neighbours and increase the satisfaction of those that we deal with.</b></p> | <p>Identification of ASB hotspots and multi-agency tasking through the weekly CSP Partnership Tasking and Action Group meeting and monthly ASB meeting.</p> <p>Promote the Community Trigger, ensuring an effective customer response to incidents of ASB (contact, treatment, actions and follow up)</p> | <p>Reduction in reported ASB across the borough.<br/>Quicker targeted response to priorities for CSP.</p> <p>Reduced percentage of community who consider there is a high level of ASB.<br/>Increased awareness of work undertaken to tackle ASB.<br/>Increase in customer satisfaction</p> |                             | <p>Maidstone Community Safety Unit (CSU)</p> <p>Maidstone CSU</p>                                    |
|                                                                                                                                                                                                                                                                                                                                                                                                  |                                                                                                                                                                                                                                                                                                           | <b>2014/2015</b>                                                                                                                                                                                                                                                                            | <b>Kent-wide comparison</b> | <b>Target (by 2018)</b>                                                                              |
| ASB incidents per 1,000 population                                                                                                                                                                                                                                                                                                                                                               |                                                                                                                                                                                                                                                                                                           | 22.3<br>Maidstone is currently ranked 5 <sup>th</sup> in Kent.                                                                                                                                                                                                                              | 26.5                        | Reduce to average of best 4 Kent Districts (19/1,000 population) in the Kent-wide comparison by 2018 |

**Priority 2: Reducing reoffending**

| <b>Aim</b>                                                                                                                                                                                                                                                                                                                            | <b>Action</b>                                                                                                                                                                                                                                                                                                                                                                                                                                                                                                   | <b>Anticipated Outcomes</b>                                                               |                                                                                                                           | <b>Lead Agency</b>                                                                                              |
|---------------------------------------------------------------------------------------------------------------------------------------------------------------------------------------------------------------------------------------------------------------------------------------------------------------------------------------|-----------------------------------------------------------------------------------------------------------------------------------------------------------------------------------------------------------------------------------------------------------------------------------------------------------------------------------------------------------------------------------------------------------------------------------------------------------------------------------------------------------------|-------------------------------------------------------------------------------------------|---------------------------------------------------------------------------------------------------------------------------|-----------------------------------------------------------------------------------------------------------------|
| <p><b>To work to embed the responsibility of reducing re-offending across all agencies for all age groups, including awareness raising of existing services and activities. Work will be targeted around known reasons for people to offend, included education, training and employment as well as addressing housing needs.</b></p> | <p>To concentrate initiatives and services on young people in the pre conviction stage of criminality.</p> <p>Increase the use of community payback in the borough.</p> <p>Encourage private companies into providing equal opportunities for ex-offenders. This would include work experiences, training and paid employment.</p> <p>Work with IOM and Early help teams to support the creation of tailored support plans for prolific offenders.</p> <p>Explore the greater use of the 'Buddy Tag' system</p> | <p>Reduce repeat offending and intervene at an early stage to reduce future offending</p> | <p>Provide employment and training opportunities that divert prolific offenders from crime.</p> <p>Reduce reoffending</p> | <p>SMP Reducing Re-offending sub-group</p> <p>SMP Reducing Re-offending sub-group</p> <p>IOM and Early Help</p> |
| <b>Indicator</b>                                                                                                                                                                                                                                                                                                                      |                                                                                                                                                                                                                                                                                                                                                                                                                                                                                                                 | <b>Kent-wide average</b>                                                                  | <b>West Kent division</b>                                                                                                 |                                                                                                                 |
| <p>Reoffending data related to the KSS CRC is currently unavailable, with the first publication from the MOJ due in October 2017.</p>                                                                                                                                                                                                 |                                                                                                                                                                                                                                                                                                                                                                                                                                                                                                                 | <p>36% reduction in offending from adult IOM cohort in 2015</p>                           | <p>32% reduction in offending from adult IOM cohort in 2015</p>                                                           |                                                                                                                 |

**Priority 3: Road safety - killed or seriously injured (KSI)**

| <b>Aim</b>                                                                                                                                           | <b>Action</b>                                                                                                                                                                                                                                                                                                                                          | <b>Anticipated Outcomes</b>                                                                                                                                                                                                             |                                           | <b>Lead Agency</b>                                                                                                                        |
|------------------------------------------------------------------------------------------------------------------------------------------------------|--------------------------------------------------------------------------------------------------------------------------------------------------------------------------------------------------------------------------------------------------------------------------------------------------------------------------------------------------------|-----------------------------------------------------------------------------------------------------------------------------------------------------------------------------------------------------------------------------------------|-------------------------------------------|-------------------------------------------------------------------------------------------------------------------------------------------|
| <p><b>To continue multi-agency work promoting road safety awareness to reduce the number of people killed or seriously injured on the roads.</b></p> | <p>Deliver a multi-agency response to dangerous parking at drop off and collection points at schools across Maidstone.</p> <p>Promote the annual road safety signs and support awareness campaigns delivered by KFRS</p> <p>Support the delivery of speed watch, a volunteer led programme to highlight the issues of speeding on Maidstone’s road</p> | <p>Improve safety for students around the school area.</p> <p>Reduced road fatalities and serious injury caused by road traffic accidents.</p> <p>Fewer Complaints of inappropriate speed in villages, Fewer road traffic accidents</p> |                                           | <p>Maidstone Borough Council</p> <p>Kent Road Safety team and Kent Public Health</p> <p>Kent Police and SMP Road safety KSI sub group</p> |
| <b>Indicator</b>                                                                                                                                     |                                                                                                                                                                                                                                                                                                                                                        | <b>Maidstone July 2014 – June 2015</b>                                                                                                                                                                                                  | <b>Kent average July 2014 - June 2015</b> | <b>Target (by 2018)</b>                                                                                                                   |
| <p>Reported Killed and Seriously Injured (KSI) casualties all ages</p>                                                                               |                                                                                                                                                                                                                                                                                                                                                        | <p>57</p>                                                                                                                                                                                                                               | <p>49</p>                                 | <p>To aim for below Kent average</p>                                                                                                      |
| <p>Reported Killed and Seriously Injured (KSI) casualties (under 16)</p>                                                                             |                                                                                                                                                                                                                                                                                                                                                        | <p>3</p>                                                                                                                                                                                                                                | <p>5</p>                                  | <p>Maintain below Kent average</p>                                                                                                        |
| <p>Delivery of RUSH education programme to Year 11 students</p>                                                                                      |                                                                                                                                                                                                                                                                                                                                                        | <p>3,000</p>                                                                                                                                                                                                                            | <p>Not applicable</p>                     | <p>RUSH delivered to 3,000 Year 11 students annually</p>                                                                                  |

**Priority 4: Substance misuse**

| <b>Aim</b>                                                                                                                                                                                    | <b>Action</b>                                                                                                                                                                                                                                                                                                                                                                                                                                                                                                  | <b>Anticipated Outcomes</b>                                                                                                         |                                                                                                                                                                                                                                                                                                     | <b>Lead Agency</b>                                                                                                                                      |
|-----------------------------------------------------------------------------------------------------------------------------------------------------------------------------------------------|----------------------------------------------------------------------------------------------------------------------------------------------------------------------------------------------------------------------------------------------------------------------------------------------------------------------------------------------------------------------------------------------------------------------------------------------------------------------------------------------------------------|-------------------------------------------------------------------------------------------------------------------------------------|-----------------------------------------------------------------------------------------------------------------------------------------------------------------------------------------------------------------------------------------------------------------------------------------------------|---------------------------------------------------------------------------------------------------------------------------------------------------------|
| <p><b>To continue multi-agency work to reduce the impact of drug and alcohol misuse on individuals and the local community, including drunken behaviour, binge and underage drinking.</b></p> | <p>Support Kent Alcohol Strategy and the West Kent Alcohol Action Plan, developing local, targeted projects with young people.</p> <p>Assess needle finds and needle drop locations in Maidstone and develop a targeted partnership action plan to increase outreach support and services.</p> <p>Implementation of multi-agency street outreach to support street population through CRI, GPs and other providers.</p> <p>Trial a Reduce the Strength initiative targeting town centre based off-licenses</p> | <p>Reduction in underage drinking across Maidstone.</p> <p>Raised young people’s awareness of the dangers of drugs and alcohol.</p> | <p>Reduce needle finds and increase use and provision of needle drop locations.</p> <p>Increased referrals to targeted interventions against these individuals and reduce the impact on the community</p> <p>Fewer reports of drink related ASB and violent crime, fewer admissions to hospital</p> | <p>SMP Substance Misuse sub-group</p> <p>SMP Substance Misuse sub-group</p> <p>SMP Substance Misuse sub-group</p> <p>SMP substance misuse sub-group</p> |
| <b>Indicator</b>                                                                                                                                                                              |                                                                                                                                                                                                                                                                                                                                                                                                                                                                                                                | <b>Maidstone 2015</b>                                                                                                               | <b>Kent-wide comparison</b>                                                                                                                                                                                                                                                                         | <b>Target (by 2018)</b>                                                                                                                                 |
| Number of drug offences per 1,000 population                                                                                                                                                  |                                                                                                                                                                                                                                                                                                                                                                                                                                                                                                                | 1.74                                                                                                                                | 1.79                                                                                                                                                                                                                                                                                                | Maintain under Kent average                                                                                                                             |
| Alcohol related hospital admissions per 10,000 population                                                                                                                                     |                                                                                                                                                                                                                                                                                                                                                                                                                                                                                                                | 4.58                                                                                                                                | 5.83                                                                                                                                                                                                                                                                                                | Maintain under Kent average                                                                                                                             |
| Number of discarded needles picked up                                                                                                                                                         |                                                                                                                                                                                                                                                                                                                                                                                                                                                                                                                | 1,610                                                                                                                               | N/A                                                                                                                                                                                                                                                                                                 | Reduce to 1,200pa                                                                                                                                       |

**Priority 4: Violent Crime (domestic abuse)**

| <b>Aim</b>                                                                                                                                                             | <b>Action</b>                                                                                                                                                                                                                                                                                                                                                                                                                                                                                | <b>Anticipated Outcomes</b>                                                                                                                                                                       |                                                                                             | <b>Lead Agency</b>                                                                                |
|------------------------------------------------------------------------------------------------------------------------------------------------------------------------|----------------------------------------------------------------------------------------------------------------------------------------------------------------------------------------------------------------------------------------------------------------------------------------------------------------------------------------------------------------------------------------------------------------------------------------------------------------------------------------------|---------------------------------------------------------------------------------------------------------------------------------------------------------------------------------------------------|---------------------------------------------------------------------------------------------|---------------------------------------------------------------------------------------------------|
| <p><b>To work to reduce repeat victimisation of domestic abuse victims and to ensure effective services are in place to support and meet the needs of victims.</b></p> | <p>Support the delivery of the Maidstone Domestic Abuse Action Plan to support the CSP Plan.</p> <p>Support the Specialist Domestic Violence Court and the work of the Independent Domestic Violence Advisors.</p> <p>Continuation of the Multi-Agency Risk Assessment Conference (MARAC) in Maidstone.</p> <p>Implement a robust recording process for uncovering the emergence of adolescent to parent violence (APV) by working closely with the Early help and social services team.</p> | <p>Increased access to information for agencies, victims, families and friends; improved referral routes; improved awareness and access to services for adults, children and teenage victims.</p> | <p>Increased number of domestic abuse cases seen at Court. Reduction in repeat victims.</p> | <p>Maidstone Domestic Violence Forum</p>                                                          |
|                                                                                                                                                                        |                                                                                                                                                                                                                                                                                                                                                                                                                                                                                              | <p>Increased referrals from wider range of agencies.<br/>Support to high risk victims of domestic abuse.</p>                                                                                      | <p>A greater understanding of APV in Maidstone.</p>                                         | <p>HM Court Services</p> <p>Maidstone Domestic Violence Forum</p> <p>Maidstone Family Matters</p> |
| <b>Indicator</b>                                                                                                                                                       |                                                                                                                                                                                                                                                                                                                                                                                                                                                                                              | <b>Baseline Oct 2014-15</b>                                                                                                                                                                       | <b>Kent-wide comparison</b>                                                                 | <b>Target (by 2018)</b>                                                                           |
| Number of DA incidents per 1,000 population                                                                                                                            |                                                                                                                                                                                                                                                                                                                                                                                                                                                                                              | 16.08                                                                                                                                                                                             | 18.19                                                                                       | Encourage reporting to match the Kent-wide comparison                                             |
| % who are repeat victims                                                                                                                                               |                                                                                                                                                                                                                                                                                                                                                                                                                                                                                              | 25.1%                                                                                                                                                                                             | 25.2%                                                                                       | Maintain under the Kent-wide comparison                                                           |
| Number of visitors to DA One Stop Shop                                                                                                                                 |                                                                                                                                                                                                                                                                                                                                                                                                                                                                                              |                                                                                                                                                                                                   |                                                                                             |                                                                                                   |
| (a) Actual                                                                                                                                                             |                                                                                                                                                                                                                                                                                                                                                                                                                                                                                              | 156                                                                                                                                                                                               | 2410                                                                                        | Increase to 180                                                                                   |
| (b) Per 10,000 population                                                                                                                                              |                                                                                                                                                                                                                                                                                                                                                                                                                                                                                              | 9.75                                                                                                                                                                                              | 15.06                                                                                       | Increase to 12/10,000 pop                                                                         |
| % of repeat MARAC cases                                                                                                                                                |                                                                                                                                                                                                                                                                                                                                                                                                                                                                                              | 18%                                                                                                                                                                                               | 25%                                                                                         | Maintain current levels                                                                           |





**Priority 5: Community Resilience (Prevent, Child Sexual Exploitation (CSE), Serious Organised Crime (SOC), Human Trafficking, Modern Slavery and Safeguarding)**

| Aim                                                                                                                                                       | Action                                                                                                                                                                                                                                                                                                                                                                               | Anticipated Outcomes                                                                                                                 |  | Lead Agency                           |
|-----------------------------------------------------------------------------------------------------------------------------------------------------------|--------------------------------------------------------------------------------------------------------------------------------------------------------------------------------------------------------------------------------------------------------------------------------------------------------------------------------------------------------------------------------------|--------------------------------------------------------------------------------------------------------------------------------------|--|---------------------------------------|
| <p><b>To prevent, prepare and protect the community from radicalisation, extremism, CSE, SOC, human trafficking, modern slavery and safeguarding.</b></p> | <p>To identify local vulnerabilities in Maidstone for each area of the Kent control strategy.</p> <p>To establish a multi-agency sub group to focus on the emerging issues in Maidstone. Perhaps look at a Serious Organised Crime Partnership.</p> <p>Provide training and awareness raising sessions to appropriate partners and residents on the community resilience themes.</p> | <p>An established understanding of the issues locally</p>                                                                            |  | <p>Community resilience sub group</p> |
|                                                                                                                                                           |                                                                                                                                                                                                                                                                                                                                                                                      | <p>The group will formulate an action plan based on the needs identified through multi-agency data around these evolving topics.</p> |  | <p>Community resilience sub group</p> |
|                                                                                                                                                           |                                                                                                                                                                                                                                                                                                                                                                                      | <p>To maximise opportunities for safeguarding young people, preventing SOC, CSE, modern slavery and human trafficking.</p>           |  | <p>Community resilience sub group</p> |
| <b>Indicator</b>                                                                                                                                          |                                                                                                                                                                                                                                                                                                                                                                                      |                                                                                                                                      |  |                                       |
| <p>To train up to 200 people per year in the resilience topics.</p>                                                                                       |                                                                                                                                                                                                                                                                                                                                                                                      |                                                                                                                                      |  |                                       |

## **9. Consultation on Priorities and Partnership Plan**

Maidstone has some clearly defined urban as well as rural areas, often with competing demands on resources and emphasis on what local priorities should be. Through the annual Strategic Assessment and future consultation events, stakeholders will be informed of progress against the Partnership Plan to ensure there are no other compelling issues that should be included in the Plan.

## **10. Further information**

### **Maidstone Community Safety Unit**

Tel: 01634 602000

### **Maidstone Police Station**

Non-emergency Tel: 101

Emergency Tel: 999

### **Kent Fire and Rescue Service**

Tel: 01622 692121

### **One-Stop Shop**

Maidstone Gateway reception, Maidstone Borough Council, King Street, Maidstone, Kent ME15 6GY

Tel: 01622 761146

### **Domestic Abuse Hotline Domestic Abuse Support and Services in Kent**

Tel: 0808 2000247

[www.domesticabuseservices.org.uk](http://www.domesticabuseservices.org.uk)

### **Kent Hate Incident Reporting Line**

Tel: 0800 1381624

### **Anti-Terrorist Hotline**

Tel: In confidence on 0800 789321

### **Mental Health**

Kent and Medway NHS and Social Care Partnership Trust

Tel: 01622 724100

[www.kmpt.nhs.uk](http://www.kmpt.nhs.uk)

### **Restorative Justice**

Maidstone Mediation

Tel: 01622 692843

Project Salus

Tel: 01303 817470

### **Text service for the deaf or speech-impaired**

If you're deaf or speech-impaired, you can text Kent Police. Start the message with the word 'police' then leave a space and write your message including what and where the problem is. Send your text to 60066 (the Kent Police communications centre) and they will reply with a message.