

# Planning Committee

## Adjourned Meeting 02.07.20



**20/501029/FULL & 20/501030/LBC**

Len House

Mill Street / Palace Avenue

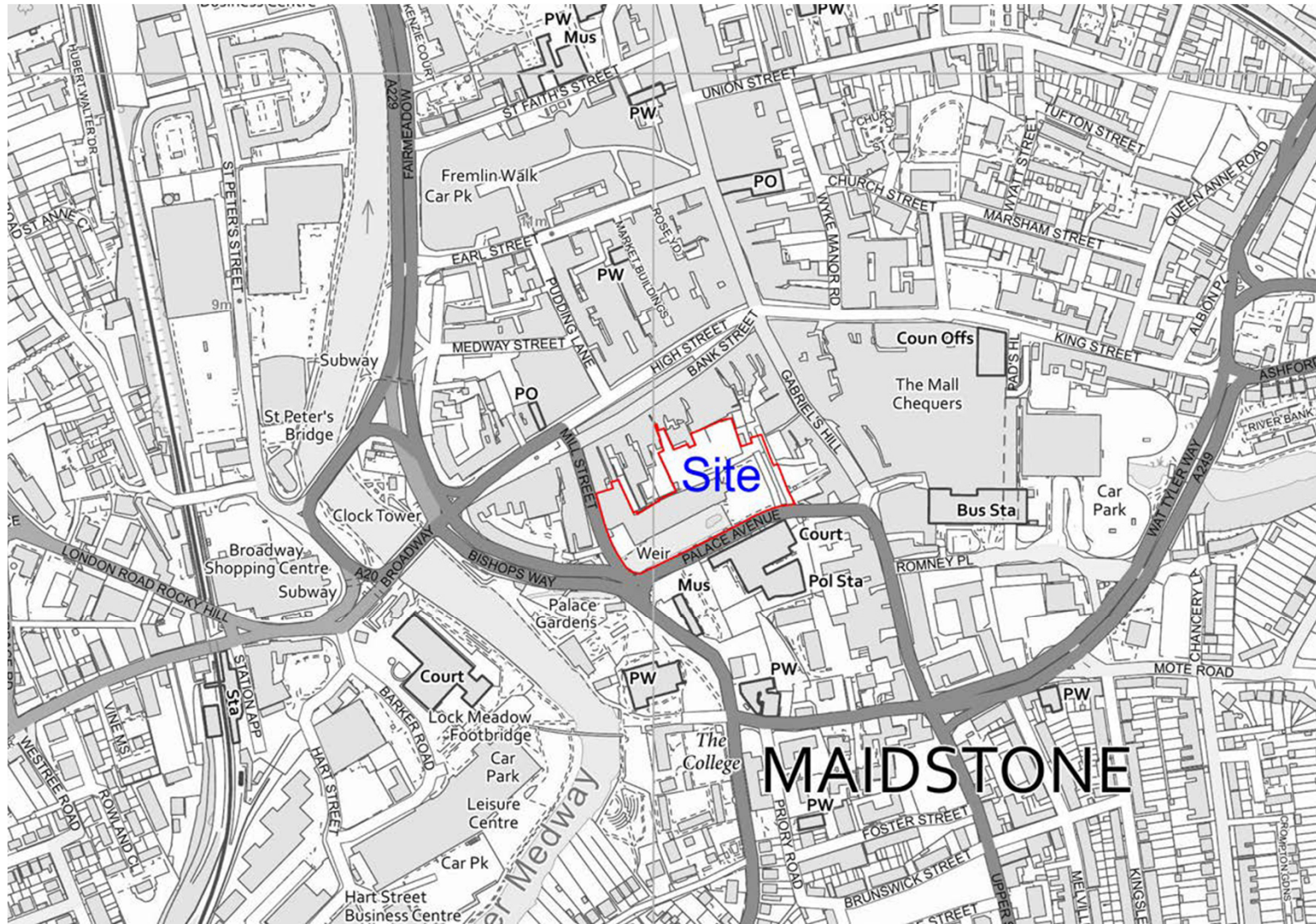
Maidstone



# Len House 20/501029/FULL & 20/501030/LBC



# Len House 20/501029/FULL & 20/501030/LBC



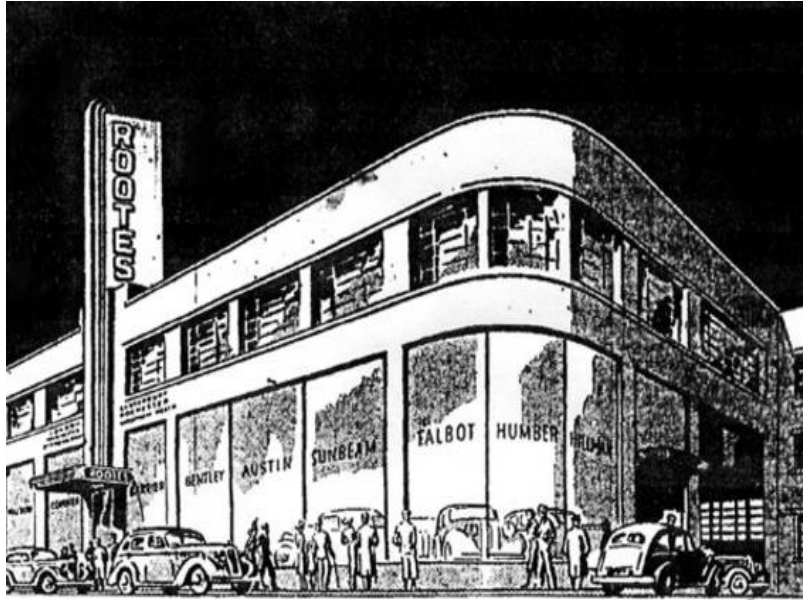
## Site Location

Len House 20/501029/FULL & 20/501030/LBC



Historical Tannery & Engineering Works

# Len House 20/501029/FULL & 20/501030/LBC



1930's Vision



# Len House 20/501029/FULL & 20/501030/LBC



Original Workshops..... & Now

Len House 20/501029/FULL & 20/501030/LBC



The Iconic Vehicle Ramp Remains Today



# Len House 20/501029/FULL & 20/501030/LBC



Heritage Significance

# The Proposals



Restoration of Len House

# The Proposals



## Restoration of Len House

# The Proposals



Restoration of Len House

# The Proposals



Restoration of Len House

# The Proposals



New Build Elements

# The Proposals



New Build Element / Front

# The Proposals



New Build Element / Rear

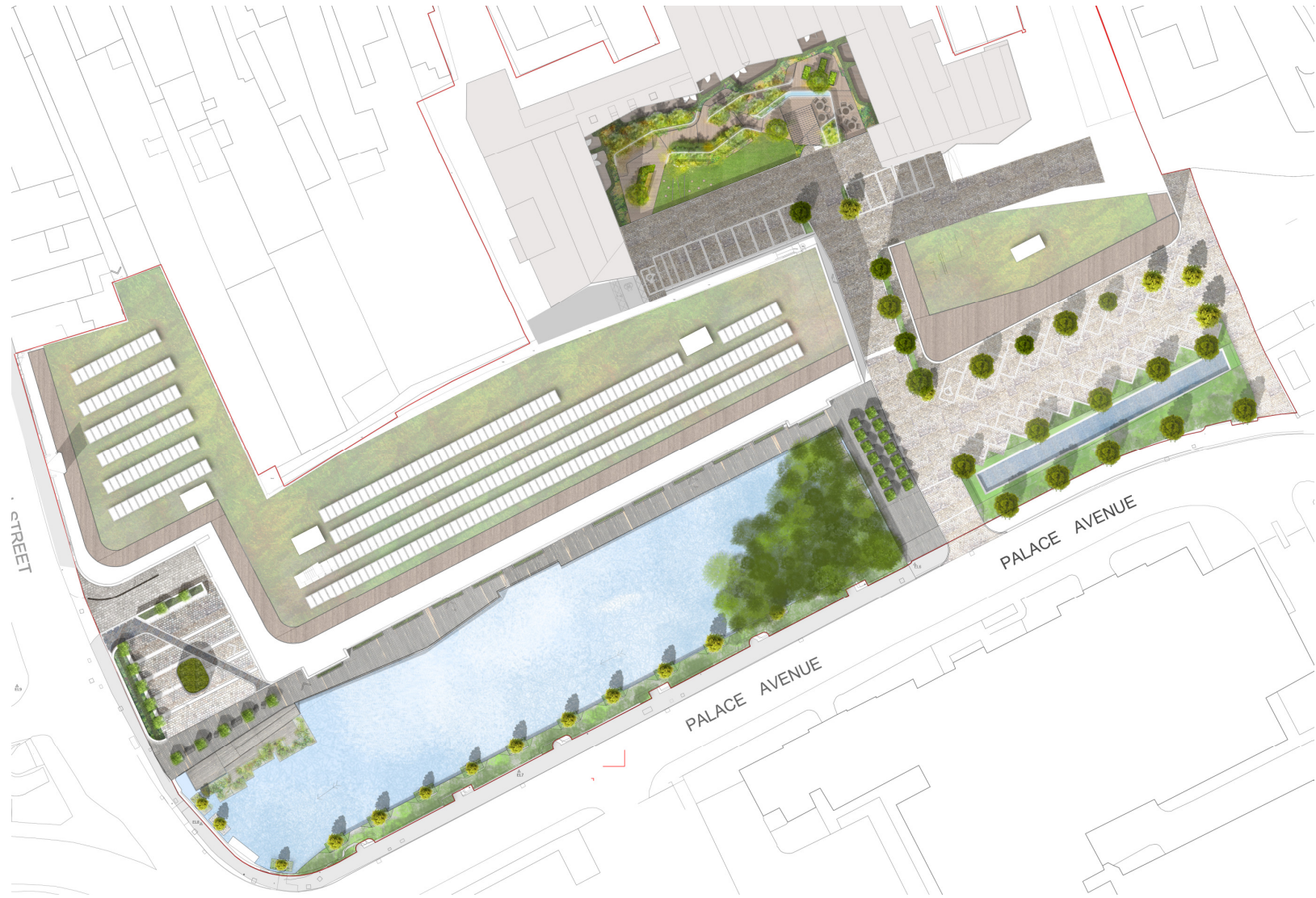


# The Proposals



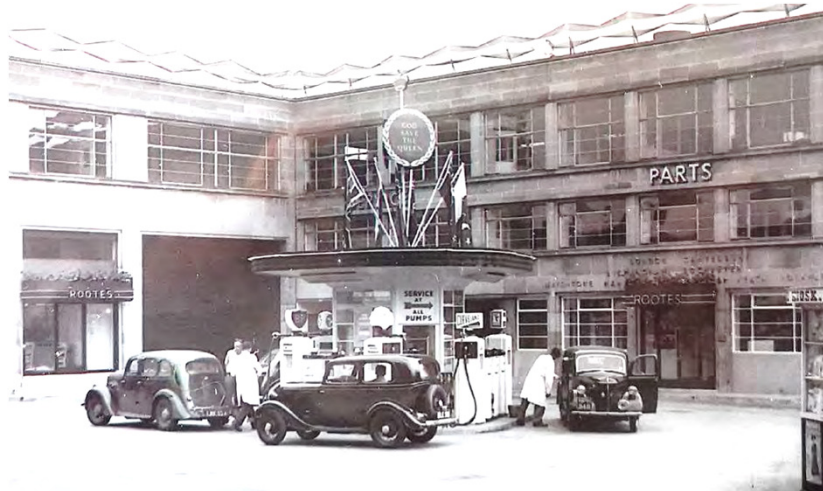
New Build Element – Relationship with the Rear

# Len House 20/501029/FULL & 20/501030/LBC



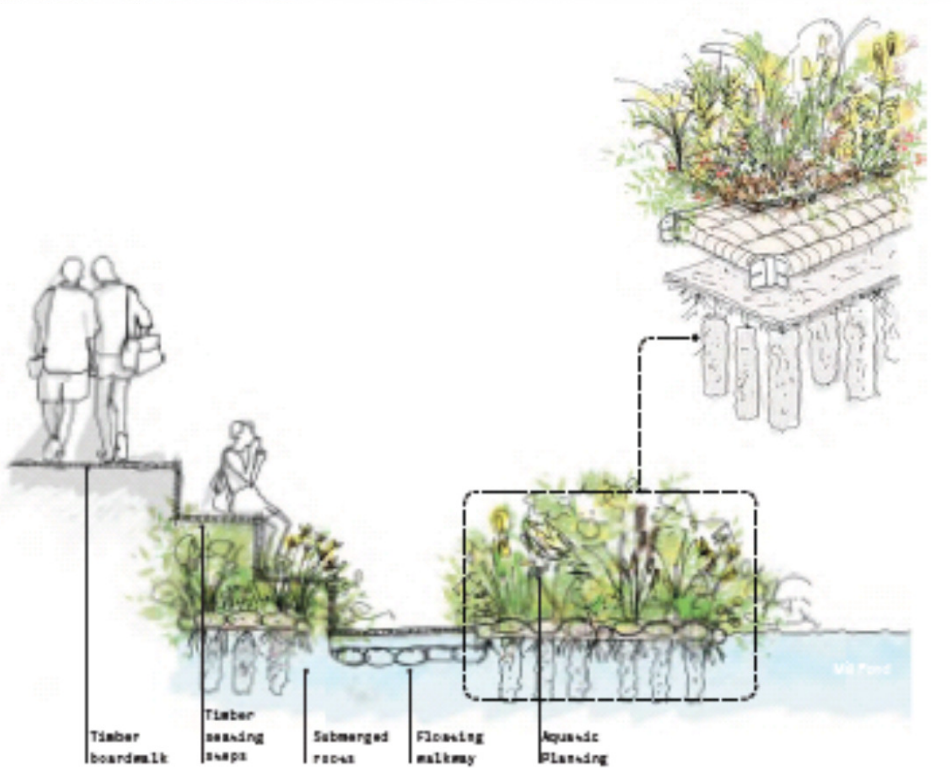
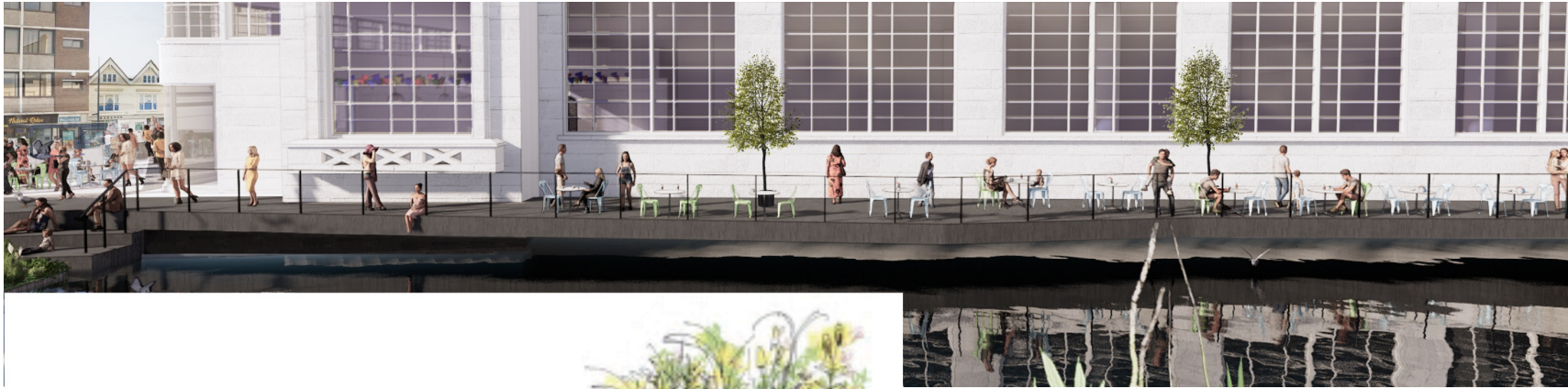
## Landscape Masterplan

# The Proposals



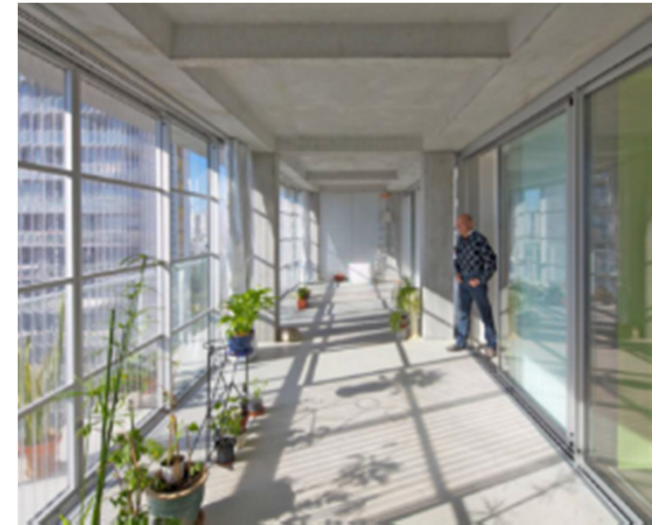
# Public Realm

# Len House 20/501029/FULL & 20/501030/LBC



Public Realm

# Len House 20/501029/FULL & 20/501030/LBC



Residential Amenity Spaces

# Conclusions

- Principle of Development
- Heritage Considerations
- Design Quality & Townscape Impact
- Ecology & Biodiversity
- Living Conditions
- Town Centre Impacts