

BASEMENT FLOOR

**KEY**

- ⊗ SMOKE DETECTOR
- ⊙ WATER EXTINGUISHER
- ⊕ CO2 EXTINGUISHER
- ⊡ ILLUMINATED "EXIT" SIGN WITH DIRECTIONAL ARROW

— Alcohol sales & Consumption  
 "Area to be used for sale and for consumption of alcohol, provision of regulated entertainment and supply of late night refreshment"

REV	DATE	DETAILS



# ROMANS

## Surveyors

4 KING STREET LANE, WIMBORNE, BERKSHIRE, RG41 3AR.  
 TELEPHONE 0118 936 6599

28 THE AVENUE, SOUTHAMPTON, HAMPSHIRE, SO17 1XN.  
 TELEPHONE 0330 880 110

84 HEATH ROAD, TWICKENHAM, MIDDLESEX, TW1 4BW.  
 TELEPHONE 0208 588 0330

E-MAIL ROMANS@ROMANS.CO.UK  
 WWW. ROMANS.CO.UK

ON BEHALF OF

## Pizza Express

PROJECT TITLE

**32 Earl Street, Maidstone  
 ME14 1PF**

DRAWING TITLE		SCALE	
Basement Floor Plan		1:100 @ A3	
DRAWN		DATE	
TH		29.07.2005	
CHECKED		DWG NO.	
		PE124	
REV			

ROMANS SURVEYORS ARE PART OF THE ROMANS GROUP INCORPORATING:

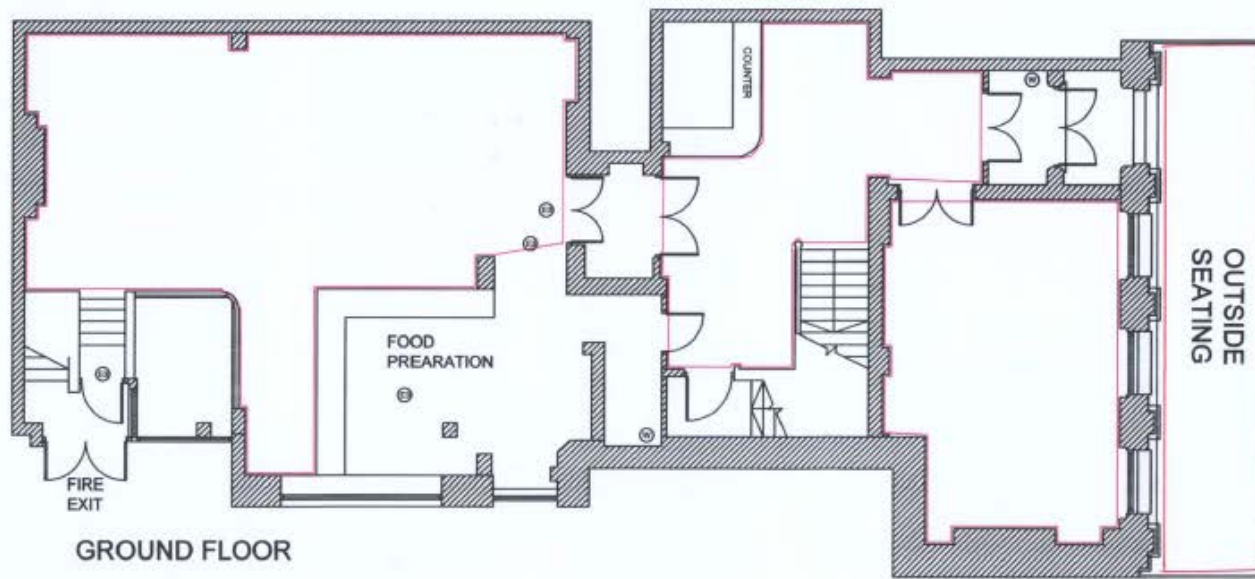
COMMERCIAL LAND & NEW HOMES LETTINGS	SURVEYORS RESIDENTIAL	ARCHITECTURAL FLOWER IFA REGULATIONS
--	--------------------------	--

The **ROMANS** Group

OUTLET NO.  
124

BSI TRADING  
ISO 9001



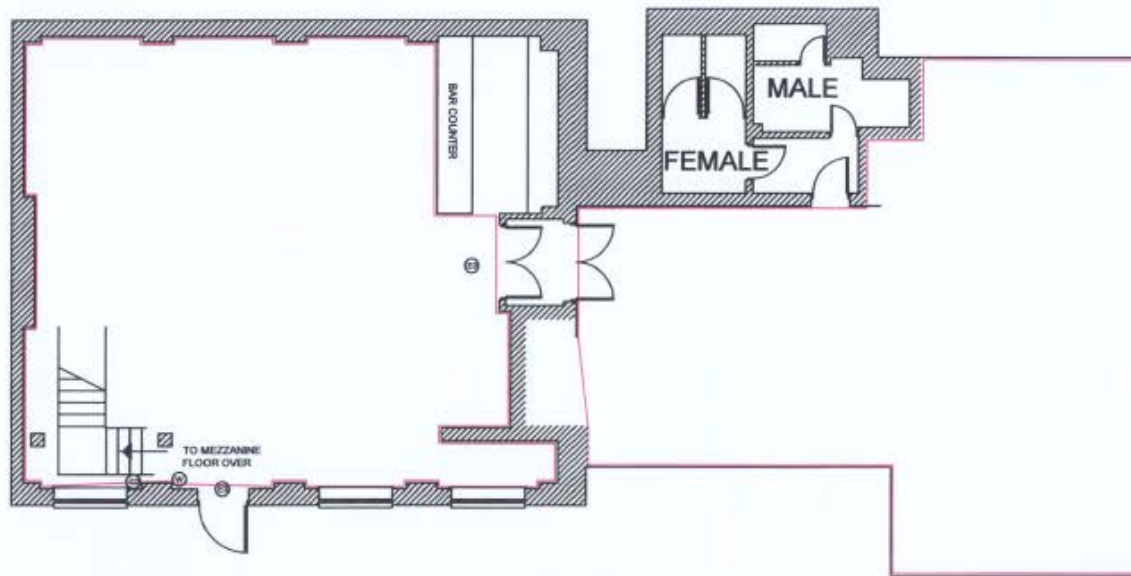
**KEY**

- ⊕ SMOKE DETECTOR
- ⊖ WATER EXTINGUISHER
- ⊙ CO2 EXTINGUISHER
- ➔ ILLUMINATED 'EXIT' SIGN WITH DIRECTIONAL ARROW

— Alcohol sales & Consumption

"Area to be used for sale and for consumption of alcohol, provision of regulated entertainment and supply of late night refreshment"

REV	DATE	DETAILS
 <b>ROMANS</b> Surveyors		
4 KING STREET LANE, WINNERSH, BERKSHIRE, RG41 5AB. TELEPHONE: 0118 936 6699		
28 THE AVENUE, SOUTHAMPTON, HAMPSHIRE, SO17 1XN. TELEPHONE: 02380 820110		
24 HEATH ROAD, TWICKENHAM, MIDDLESEX, TW1 4BW. TELEPHONE: 0208 288 0330		
E-MAIL: ROMANS@ROMANS.CO.UK WWW. ROMANS.CO.UK		
ON BEHALF OF		
<h1>Pizza Express</h1>		
PROJECT TITLE		
<b>32 Earl Street, Maidstone</b> <b>ME14 1PF</b>		
DRAWING TITLE		SCALE
Ground Floor Plan		1:100 @ A3
		DATE
		10.05.2005
DRAWN	CHECKED	DWG NO.
ESL		PE124
<small>ROMANS SURVEYORS ARE PART OF THE ROMANS GROUP INCORPORATING:</small> COMMERCIAL SURVEYORS ARCHITECTURAL LAND & NEW HOMES FLOWER IFA LETTINGS RESIDENTIAL RELOCATIONS		<b>The ROMANS</b> Group
<b>OUTLET NO.</b> 124		 



FIRST FLOOR

**KEY**

- ☉ SMOKE DETECTOR
- ☉ WATER EXTINGUISHER
- ☉ CO2 EXTINGUISHER
- ☉ ILLUMINATED "EXIT" SIGN WITH DIRECTIONAL ARROW

— Alcohol sales & Consumption

"Area to be used for sale and for consumption of alcohol, provision of regulated entertainment and supply of late night refreshment"

REV	DATE	DETAILS



# ROMANS

## Surveyors

4 KING STREET LANE, WIMBORSH, BERKSHIRE, RG41 5AB.  
TELEPHONE: 0118 936 6699

35 THE AVENUE, SOUTHAMPTON, HAMPSHIRE, SO17 1XN.  
TELEPHONE: 02380 930110

84 HEATH ROAD, TOTTENHAM, NORTHERN, TW1 4BW.  
TELEPHONE: 0208 288 0330

E-MAIL: ROMANS@ROMANS.CO.UK  
WWW.ROMANS.CO.UK

ON BEHALF OF

## Pizza Express

PROJECT TITLE

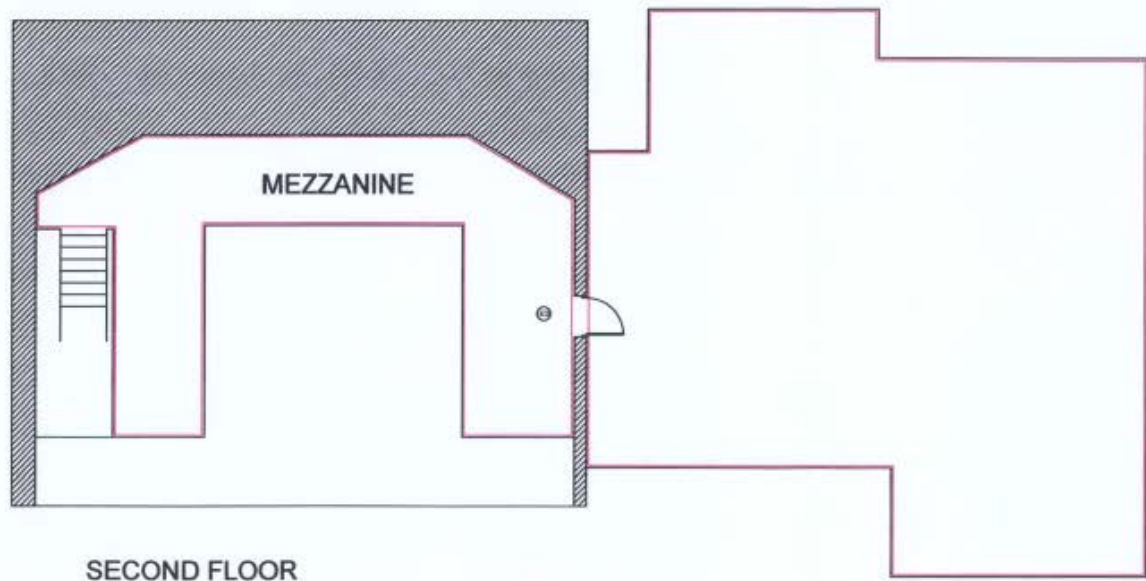
### 32 Earl Street, Maidstone ME14 1PF

DRAWING TITLE		SCALE	
First Floor Plan		1:100 @ A3	
DATE		DATE	
29.07.2005		29.07.2005	
DRAWN	CHECKED	DWG NO.	REV
TH		PE124	

ROMANS SURVEYORS ARE PART OF THE ROMANS GROUP INCORPORATING:		The <b>ROMANS</b> Group
COMMERCIAL SURVEYORS LAND & NEW HOMES LETTERS	ARCHITECTURAL FLOWER IFA RELOCATORS	

OUTLET NO. 124	 
-------------------	---





**KEY**

- ⓐ SMOKE DETECTOR
- ⓑ WATER EXTINGUISHER
- ⓒ CO2 EXTINGUISHER
- ⓓ ILLUMINATED "EXIT" SIGN WITH DIRECTIONAL ARROW

— Alcohol sales & Consumption

"Area to be used for sale and for consumption of alcohol, provision of regulated entertainment and supply of late night refreshment"

REV	DATE	DETAILS



**ROMANS**  
Surveyors

4 KING STREET LANE, WINNERSH, BERKSHIRE, RG41 9AB.  
TELEPHONE: 0118 926 8899  
28 THE AVENUE, SOUTHAMPTON, HAMPSHIRE, SO17 1XN.  
TELEPHONE: 02380 830110  
84 HEATH ROAD, TAMESWORTH, MIDLESEX, TW1 4BW.  
TELEPHONE: 0208 888 0280  
E-MAIL: ROMANS@ROMANS.CO.UK  
WWW. ROMANS.CO.UK

ON BEHALF OF

*Pizza Express*

PROJECT TITLE

32 Earl Street, Maidstone  
ME14 1PF

DRAWING TITLE

Second Floor Plan

SCALE

1:100 @ A3

DATE

29.07.2005

DRAWN

TH

CHECKED

DWG NO.

PE124

REV

ROMANS SURVEYORS ARE PART OF THE ROMANS GROUP INCORPORATING:

COMMERCIAL SURVEYORS ARCHITECTURAL  
LAND & NEW FISHER FLOWER IFA  
LETTINGS RESIDENTIAL RELOCATION

The  
**ROMANS**  
Group

OUTLET NO.  
124

