

Licensing Service Plan 2022/23

Licensing
Partnership



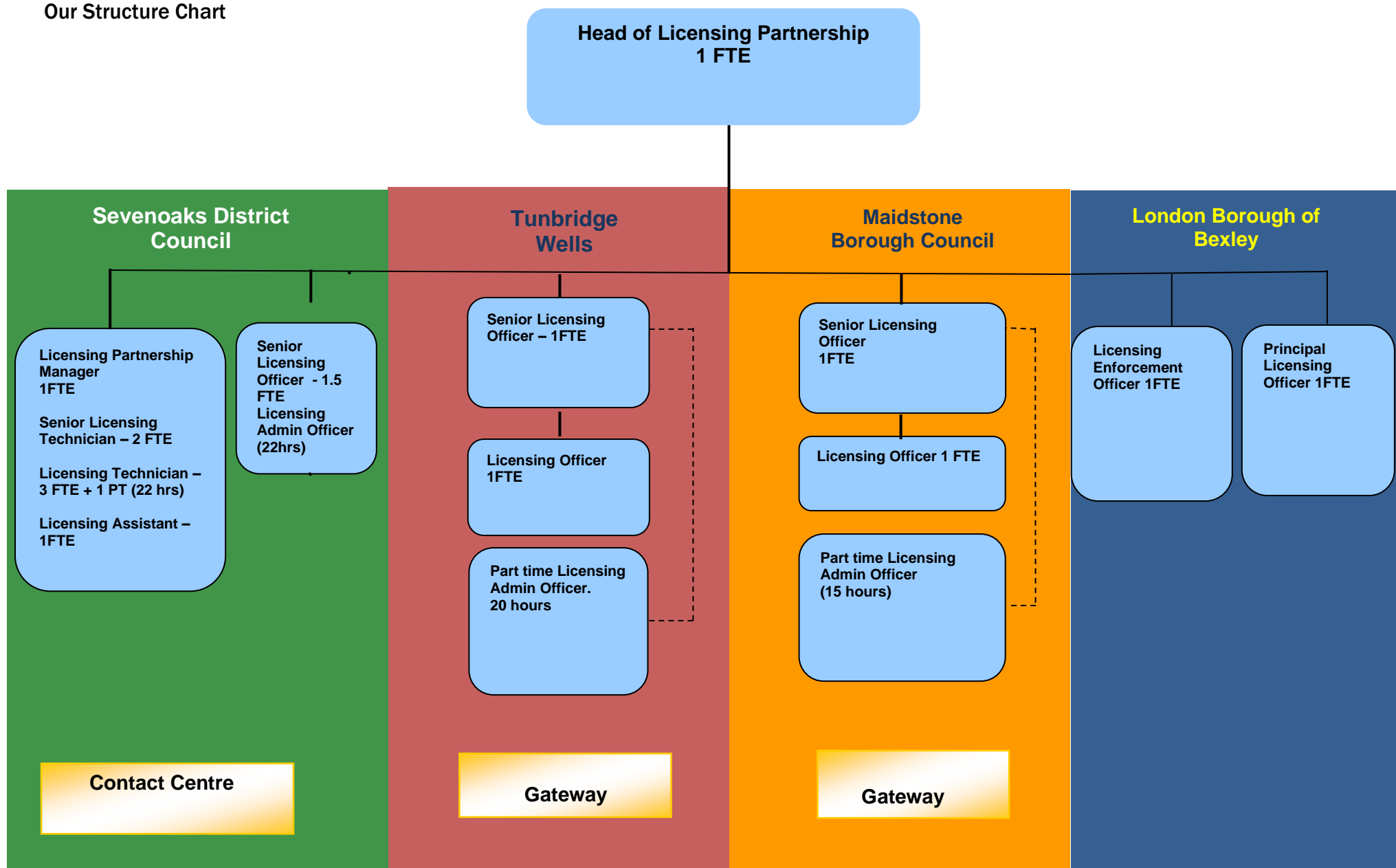
Contents

Section		Page Number
1	Who we are	3
2	What we do	5
3	2022/23 Service Objectives	6 - 16
4	Performance indicators and targets	17 - 18

1. Who we are

Team	Licensing Partnership comprising London Borough of Bexley, Maidstone Borough Council, Sevenoaks District Council and Tunbridge Wells Borough Council
Head of Service	Sharon Bamborough
Chief Officers	Gary Stevenson (Tunbridge Wells), John Littlemore (Maidstone), Richard Morris (Sevenoaks) and Jane Richardson (LB of Bexley)

Our Structure Chart



2. What we do

Key Tasks	<ul style="list-style-type: none">■ Manage and oversee the Licensing Partnership.■ Seek to promote the licensing objectives of the relevant legislation.■ Our aim is to protect the public but also allow legitimate businesses within the area to prosper.■ To ensure that the legitimate taxis and private hire trade are able to provide a safe mode of transport to the residents and users within the Partnership's area.■ Compliance – ensure compliance of licensed premises, activities and events following grant of respective licences, permits and / or notices.■ To ensure that unlicensed premises, taxis/private hire and activities are investigated and appropriate action is taken.■ To enhance customer service while ensuring compliance with legislation.■ Fulfilling statutory duty whilst optimising cost savings and maintaining individual client's Council sovereignty.■ Take advantage of economies of scale to buy services and optimise the collaborative working between partners
------------------	---

3. 2020/21 Service Objectives

Objective 1	To oversee and lead the Licensing Partnership to deliver efficiency savings and achieve performance targets	Responsible Officer	Sharon Bamborough
Performance Measure	Description	2022/23 Target or Outcome (to be achieved by 31.03.2023)	
LPI LIC 001	Send out renewal invitations for all licences/permits etc. 2 months (or 4 months for animal licensing) before the expiry date of the licence and if a valid renewal application is not received before the expiry of a licence send a failure to renew letter out within 1 week of the licence expiring and advise the appropriate Authorities accordingly. (Hub Team)	95%	
LPI LIC 002	The percentage of valid personal licences processed within 14 working days (Hub Team)	95%	
LPI LIC 003	Percentage of <i>unopposed</i> applications for new and variation of premises licences processed within 2 calendar months (from date of validation to issue date) [All]	95%	
LPI LIC 004	The percentage of valid temporary event notices served on Responsible Authorities within one working day of receipt (Hub Team)	95%	
LPI LIC 005	The percentage of driver and operator licences issued within 12 working days of validation (Hub team)	90%	
MPI LIC 05a	Percentage of Hackney Carriage driver licences issued within 12 working days of validation (Hub team)	90%	
MPI LIC 05b	Percentage of Private Hire driver licences issued within 12 working days of validation	90%	

MPI LIC 05c	Percentage of Private Hire Operator licences issued within 12 working days of validation	90%
MPI LIC 017	<p>Taxi Compliance (licensing officers at Sevenoaks, Tunbridge Wells and Maidstone):-</p> <ul style="list-style-type: none"> • start action/investigation on receipt of complaints/intelligence within 5 working days (includes visits/letters/interviews etc) • reactive/proactive enforcement investigations ongoing/completed • warnings / penalty points issued • vehicle compliance checks 	<p>Non London partners only: 15 actions per month per authority</p> <p>Except MBC who have re-set to 80 per year (equates to 7 per month)</p>
MPI LIC 018	<p>Premises compliance (all licensing officers throughout partnership) :-</p> <ul style="list-style-type: none"> • notice checks to be carried out within one week of initial display • start action/investigation on receipt of complaints/intelligence within 5 working days (includes visits/letters/interviews etc) • carry out proactive visits in accordance with risk rating system • attend enforcement meetings/briefings/collaborate with partners on multi-agency approach 	<p>Non London partners – 15 actions per month per authority</p> <p>Except MBC who have re-set to 80 per year (equates to 7 per month)</p> <p>Bexley – 30 actions per month</p>
MPI LIC 019	<p>(for partners where Hub team arrange annual fee collection -does not apply to Bexley)</p> <p>(i) Send out invoices for continuation fees for licences/permits issued under the Licensing Act 2003 and Gambling Act 2005 at least 1 month in advance of the fee being due</p> <p>(ii) Where those fees are not received by the due date, take action to suspend/revoke licence/permit within 1 month of the fee being due.</p> <p>(Hub Team)</p>	95%

MPI LIC 020	Action after suspension - Licensing officers to visit /establish status and resolve within one month and start/take any necessary action (all licensing officers throughout partnership except Bexley) (all licensing officers throughout partnership)	95%
BPI LIC 021	Percentage of <i>unopposed</i> applications for new and variation of Special treatments licences processed within 2 calendar months (from date of validation to issue date) [LBB & Hub]	95%
Link to Sevenoaks Corporate Plan	Providing value for money	Link to Sevenoaks Community Plan Safe Communities
Link to Maidstone Statagic Plan	Keeping Maidstone an attractive place for all - Ensuring there are good leisure and cultural attractions	
Link to Tunbridge Wells Key Objectives in the Vision	Providing Value	Link to Strategic Compass To ensure we operate in a business-like way
Link to Bexley Corporate Plan (Shaping our Future Together)	Innovation and self sufficiency	

Objective 2	Be open and proactive about undertaking of licensing functions for other local authorities.	Responsible Officer	Sharon Bamborough
Performance Measure	Description	2022/23 Target or Outcome	
Action	Promote the partnership and be open to enquiries with potential partners to undertake licensing functions for a 5 th partner.	Further functions carried out for other partners.	
Action	Implement the required processes/changes to ensure an additional partner is integrated within the Licensing Partnership	A smooth integration of any additional partners	
Link to Sevenoaks Corporate Plan	Providing value for money	Link to Sevenoaks Community Plan	Safe Communities
Link to Maidstone Corporate Priorities	Securing a successful economy for Maidstone Borough		
Link to Bexley corporate plan	Innovation and self sufficiency – a commercial approach		
Link to Tunbridge Wells Corporate Priorities	To support a prosperous borough	Link to Strategic Compass	Providing value

Objective 3	Seek further efficiency savings in processes and use of online facilities	Responsible Officer	Sharon Bamborough
Performance Measure	Description	2022/23 Target or Outcome	
Action	Continuous review of processes and procedures of Hub team officers and streamline / change as and when requested by partner officers	More efficient working or meeting new legal requirements On-going	
Link to Sevenoaks Corporate Plan	Supporting and developing the local economy	Link to Sevenoaks Community Plan	Safe Communities
Link to Bexley corporate plan	Innovation and self sufficiency – a commercial approach	Link to Maidstone Corporate Priorities	Securing a successful economy for Maidstone Borough
Link to Tunbridge Wells Corporate Priorities	To support a prosperous borough	Link to Strategic Compass	Providing value

Objective 4	Ensure all online forms are implemented and in use by customers and explore other software solutions	Responsible Officer	Sharon Bamborough
Performance Measure	Description	2022/23 Target or Outcome	
Action	The library of on line forms should implemented across the four partners – to include new forms for and any updates needed for existing ones	Complete the introduction/update of all online forms. On-going	
Action	Further development of electronic record management system, Enterprise (from Idox)	Increased efficiency and monitoring tools, with enhanced reporting options On-going	
Link to Sevenoaks Corporate Plan	Supporting and developing the local economy	Link to Sevenoaks Community Plan	Safe Communities
Link to Bexley corporate plan	Innovation and self sufficiency – a commercial approach	Link to Maidstone Corporate Priorities	Securing a successful economy for Maidstone Borough
Link to Tunbridge Wells Corporate Priorities	To support a prosperous borough	Link to Strategic Compass	Providing value

Objective 5	Undertake a programme of training for Members and officers. Ensure all new Members on each Licensing Committee receive appropriate training.	Responsible Officer	Sharon Bamborough
Performance Measure	Description	2022/23 Target or Outcome	
Action	Deliver a programme of training to the Members and officers.	Train any new members to Licensing committee and ad hoc training to any other new members appointed for all partners To be achieved by 31/03/2023	
Action	Deliver/facilitate training on required topics for officers as needed	To be achieved by 31/03/2023	
Link to Sevenoaks Corporate Plan	Keeping the district safe	Link to Sevenoaks Community Plan	Safe Communities
Link to Bexley corporate plan	Growth that benefits all – the right skills for jobs of today and tomorrow	Link to Maidstone Corporate Priorities	Securing a successful economy for Maidstone Borough – range of Employment Skills and opportunities across the Borough
Link to Tunbridge Wells Corporate Priorities	Our People	Link to Strategic Compass	To have relevant skills

Objective 6	Revision of Policies & Procedures		Responsible Officer	Sharon Bamborough/Lorraine Neale/Sharon Degiorgio/Samantha Laing/Michael Moss
Performance Measure	Description		2022/23 Target or Outcome	
Action	In July 2022, SB to liaise with relevant staff at LBB to start the planning (data analysis) for review of Cumulative Impact Policy due in June 2023, and keep under review to ensure the data will be ready for the following year		Achieve statutory obligations. To be achieved by 31/03/2023	
Action	Continue the review of the Hub Team Admin procedures and update where necessary		To improve efficiency, reduce errors and speed up processing On-going	
Action	To review taxi policies in Maidstone, Tunbridge Wells and Sevenoaks as and when needed.		To respond to changing needs of public and trade and to keep in line with corporate objectives On-going	
Action	To continue to take part in the Kent and Medway Energy and Low Emissions Implementation Plan lead by KCC (for SDC/MBC/TWBC only)		To contribute to net zero aspirations (new)	
Link to Sevenoaks Corporate Plan	Supporting and developing the local economy	Link to Sevenoaks Community Plan	Safe Communities	
Link to Bexley corporate plan	Innovation and self sufficiency – a commercial approach	Link to Maidstone Corporate Priorities	Securing a successful economy for Maidstone Borough	

Link to Tunbridge Wells Corporate Priorities	To support a prosperous borough	Link to Strategic Compass	Providing value
---	---------------------------------	----------------------------------	-----------------

Objective 7	Health, Safety and Well Being of Staff		Responsible Officer	Sharon Bamborough
Performance Measure	Description		2022/23 Target or Outcome	
Action	Ensure risk assessments are carried out and reviewed as appropriate and at least once a year.		Risk assessments are in place and are reviewed. To be achieved by 31/03/2023	
Action	Ensure 1:1 meetings are carried out on a regular basis.		All Senior Licensing Officers and Licensing Partnership Manager to ensure meetings take place.	
Action	Ensure staff have complied with any employer requirements in terms of completing workstation assessments both in office and at home if working from home occurs		All Senior Licensing Officers and Licensing Partnership Manager to ensure their staff have completed assessments, HoLP to ensure seniors /LPM have done so	
Link to Sevenoaks Corporate Plan	Supporting and developing the local economy	Link to Sevenoaks Community Plan	Safe Communities	
Link to Bexley corporate plan	Innovation and self sufficiency – a commercial approach	Link to Maidstone Corporate Priorities	Securing a successful economy for Maidstone Borough	
Link to Tunbridge Wells Corporate Priorities	To support a prosperous borough	Link to Strategic Compass	Providing value	

4. Measuring our Performance

Performance Indicators and Target Setting

Code	Description	Collection period	2022/23 target
LPI LIC 001	Send out renewal invitations for all licences/permits etc. 2 months (or 4 months for animal licensing) before the expiry date of the licence and if a valid renewal application is not received before the expiry of a licence send a failure to renew letter out within agreed timescales of the licence expiring and advise the appropriate Authorities accordingly. (Hub Team)	Monthly	95%
LPI LIC 002	The percentage of valid personal licences processed within 14 working days (Hub Team)	Monthly	95%
LPI LIC 003	Percentage of <i>unopposed</i> applications for new and variation of premises licences processed within 2 calendar months (from date of validation to issue date) [All]	Monthly	95%
LPI LIC 004	The percentage of valid temporary event notices served on Responsible Authorities within one working day of receipt (Hub Team)	Monthly	95%
LPI LIC 005	The percentage of driver and operator licences issued within 12 working days of validation (Hub team)	Monthly	90%
MPI LIC 05a	Percentage of Hackney Carriage driver licences issued within 12 working days of validation (Hub team)	Monthly	90%
MPI LIC 05b	Percentage of Private Hire driver licences issued within 12 working days of validation (Hub team)	Monthly	90%

Code	Description	Collection period	2022/23 target
MPI LIC 05c	Percentage of Private Hire Operator licences issued within 12 working days of validation (Hub team)	Monthly	90%
MPI LIC 012	Length of time from validation to issue of HC vehicle licence (MPI) - target 12 working days (Hub team)	Monthly	90%
MPI LIC 013	Length of time from validation to issue of PH vehicle licence (MPI) - target 12 working days (Hub team)	Monthly	90%
MPI LIC 017	<p>Taxi Compliance (licensing officers at Sevenoaks, Tunbridge Wells and Maidstone):-</p> <ul style="list-style-type: none"> start action/investigation on receipt of complaints/intelligence within 5 working days (includes visits/letters/interviews etc) reactive/proactive enforcement investigations ongoing/completed warnings / penalty points issued vehicle compliance checks 	Monthly	<p>Non London partners only: 180 each (equates to 15 actions per month per authority)</p> <p>Except MBC who have re-set to 80 per year (equates to 7 per month)</p>
MPI LIC 018	<p>Premises compliance (all licensing officers throughout partnership)</p> <ul style="list-style-type: none"> notice checks to be carried out within one week of initial display start action/investigation on receipt of complaints/intelligence within 5 working days (includes visits/letters/interviews etc) carry out proactive visits in accordance with risk rating system 	Monthly	<p>Non London partners – 180 each (equates to 15 actions per month per authority)</p> <p>Except MBC who have re-set to 80 per year (equates to 7 per month)</p> <p>Bexley – 360 (equates to 30 actions per month)</p>

	<ul style="list-style-type: none"> attend enforcement meetings/briefings/collaborate with partners on multi-agency approach 		
Code	Description	Collection period	2022/23 target
MPI LIC 019	<p>(for partners where Hub team arrange annual fee collection)</p> <p>Send out invoices for continuation fees for licences/permits issued under the Licensing Act 2003 and Gambling Act 2005 at least 1 month in advance of the fee being due and where those fees are not received by the due date to take action to suspend/revoke licence/permit within 1 month of the fee being due. (Hub Team)</p>	Monthly	95%
MPI LIC 020	<p>Action after suspension - Licensing officers to visit /establish trading status within one month and start/take any necessary action (all licensing officers throughout partnership except Bexley)</p>	Annual	95%
BPI LIC 021	<p>Percentage of <i>unopposed</i> applications for new and variation of Special treatments licences processed within 2 calendar months (from date of validation to issue date) [LBB & Hub]</p>	Monthly	95%