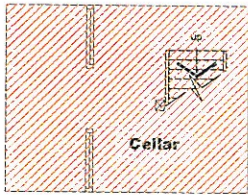
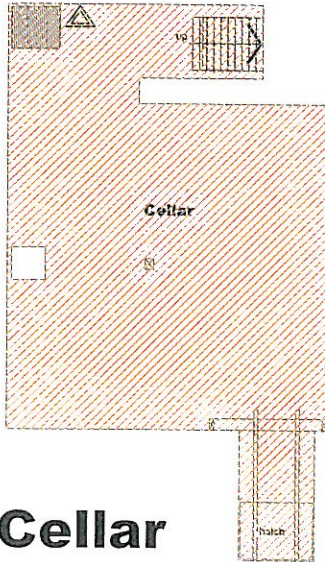


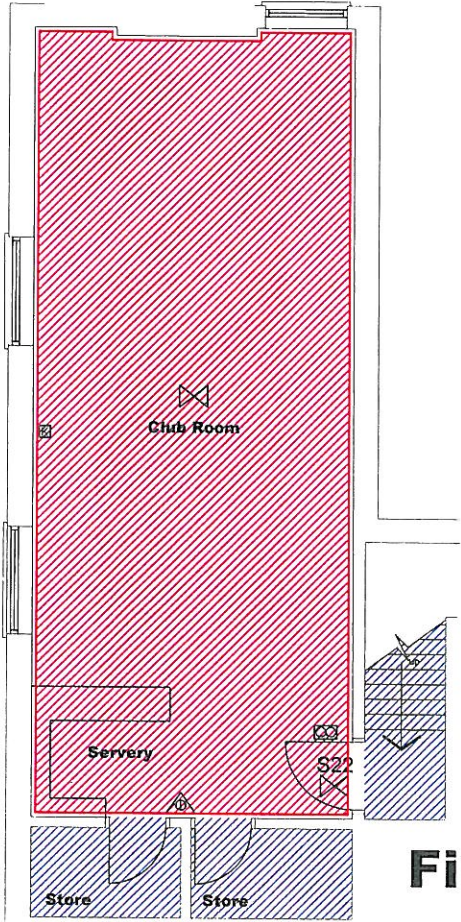
THIS DRAWING IS THE PROPERTY OF SHEPHERD NEAME LIMITED AND SHOULD NOT BE COPIED OR REPRODUCED WITHOUT THE WRITTEN CONSENT OF SHEPHERD NEAME LIMITED. ALL CRITICAL DIMENSIONS TO BE CHECKED PRIOR TO FABRICATION/CONSTRUCTION, AND ANY DISCREPANCY REPORTED TO THE PROJECT MANAGER. DO NOT SCALE FROM THIS DRAWING.



Cellar



Cellar



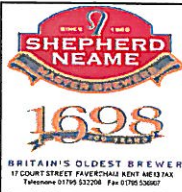
First Floor



Ground Floor

LICENSING COLOUR KEY	
Red Outline	Ambit of the licensed premise
Pink	Area where intoxicating liquor may be consumed
Brown	Areas for the storage of liquor and the bar counter
Yellow	Kitchen & staff areas
Blue	Toilets and circulation space

FIRE FIGHTING LEGEND	
PB	Door provided with 'Push Bar' mechanism
PP	Door provided with 'Push Pad' mechanism
S	Door fitted with intumescent smoke seals
FD60	Door assembly to resist the passage of fire for 60 minutes
FD30	Door assembly to resist the passage of fire for 30 minutes
SC	Door fitted with self-closing mechanism
KLS	'Keep locked shut' sign
S22	Running man sign
S20	'Fire door keep clear' sign
E	Fire exit sign
⊗	Non-maintained emergency escape light
⊗	Maintained emergency escape light
⊗	Area covered by automatic heat detection
⊗	Area covered by automatic smoke detection
⊗	Maintained directional illuminated exit light
⊗	Non-maintained directional illuminated exit light
⊗	Foam fire extinguisher
⊗	Water fire extinguisher
⊗	Fire blanket
⊗	Carbon dioxide extinguisher
⊗	Fire alarm call point
⊗	Fire alarm control panel
⊗	Alarm sounder/bell



PROJECT		Bull Inn, Linton Hill, Linton, Nr Maidstone, Kent, ME17 4AW	
DRAWING DESCRIPTION		licensing plans As Existing	
SIZE	ISSUE/PROJECT STATUS	DWG NO	REV
A3	Licensing Drawing	1470 - 01	
SCALE	DRAWN BY	DATE	
1:100 @ A3	J. WOODWARD	11 APRIL 2024	