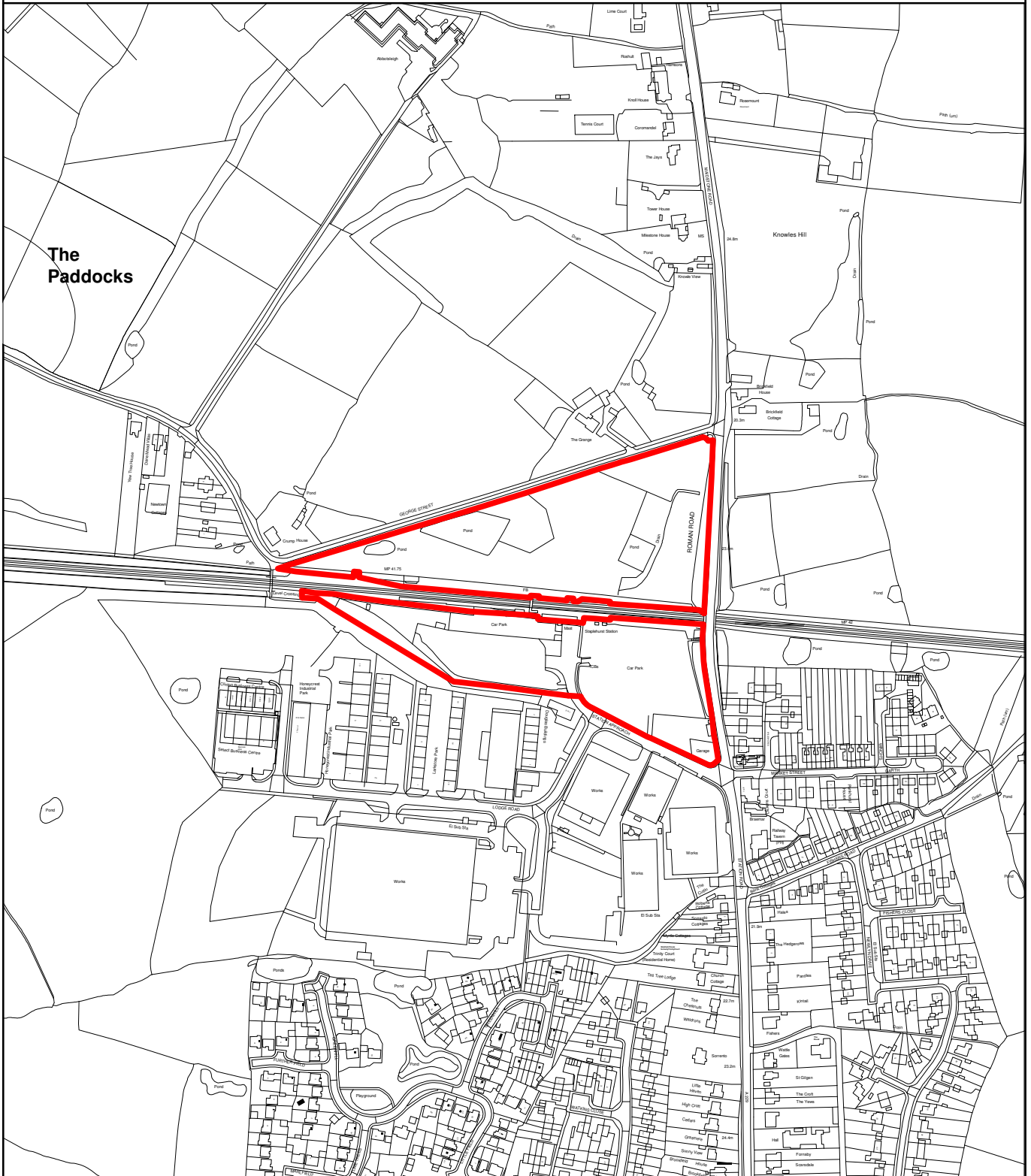


THE MAIDSTONE BOROUGH COUNCIL

PLANNING APPLICATION NUMBER: MA/13/1726

GRID REF: TQ7844

LAND AT STATION APPROACH AND,
GEORGE STREET, STAPLEHURST.



This copy has been produced specifically for Planning and Building Control Purposes only. No further copies may be made. Reproduced from the Ordnance Survey mapping with the permission of the Controller of Her Majesty's Stationary Office ©Crown Copyright. Unauthorised reproduction infringes Crown Copyright and may lead to prosecution or civil proceedings. The Maidstone Borough Council No. 100019636, 2014. Scale 1:5000



Rob Jarman
Head of Planning and Development